

V&V Reference Report

L2 ASCDS Version : 8.4.3

Observation 59018 - L2 Version 2
Chandra X-Ray Center

L2 Processing Date : Mar 30 2012

Contents

1	Front	2
2	OBI	3
2.1	OBI	3
2.1.1	Images	3
2.1.2	Bias	3
2.1.3	Parameters	4
2.1.4	Events	4
2.2	Compared Parameters	5
2.3	Star Slots	6
2.4	FID Slots	6
A	Summary	7
A.1	Status	7
A.2	Comments	7

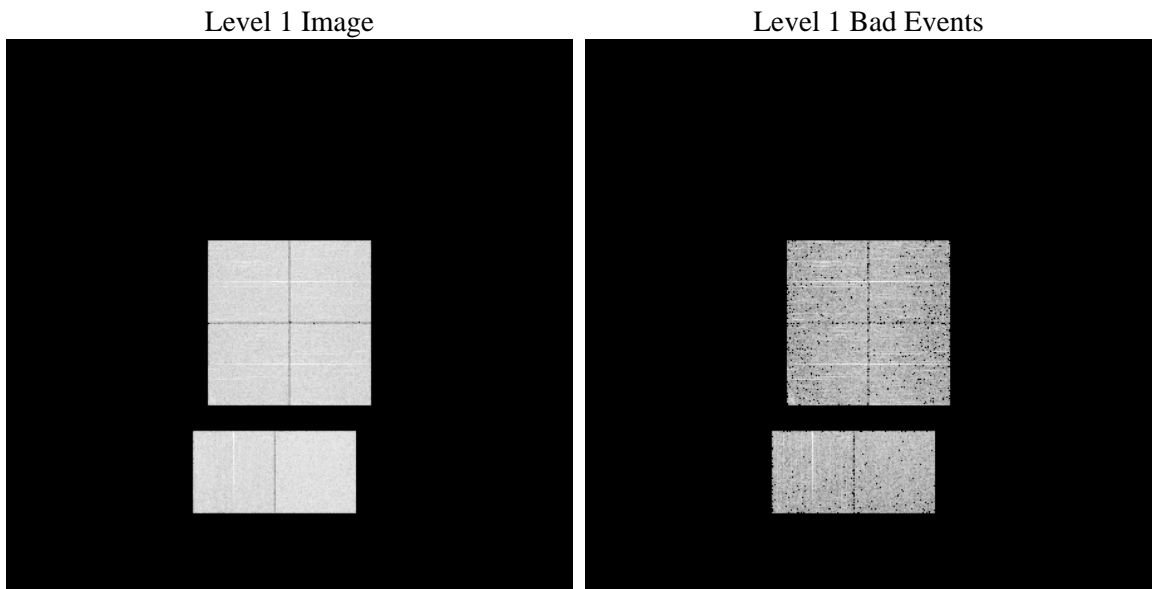
1 Front

seq_num	 	Sequence number
obs_id	59018	Observation id
title	ACIS-012367 diagnostics	Proposal title
observer	CHANDRA engineering request/realtime commanding	Principal investig
object	 	Source name
dtcycle	0	
cycle	P	events from which exps? Prim/Second/Both
ra_targ	0.0	Observer's specified target RA [deg]
dec_targ	0.0	Observer's specified target Dec [deg]
ra_nom	197.03339692318	Nominal RA [deg]
dec_nom	-37.994357323471	Nominal Dec [deg]
roll_nom	344.58636514777	Nominal Roll [deg]
revision	2	Processing version of data
ontime	3107.1999884248	Sum of GTIs [s]
livetime	3067.8547512401	Livetime [s]
ontime0	2585.4024187922	Sum of GTIs [s]
ontime1	2672.9085587859	Sum of GTIs [s]
ontime2	2520.5823949277	Sum of GTIs [s]
ontime3	2588.6431705058	Sum of GTIs [s]
ontime6	2666.4266480505	Sum of GTIs [s]
ontime7	3107.1999884248	Sum of GTIs [s]
l2events	410768	Number of level 2 events

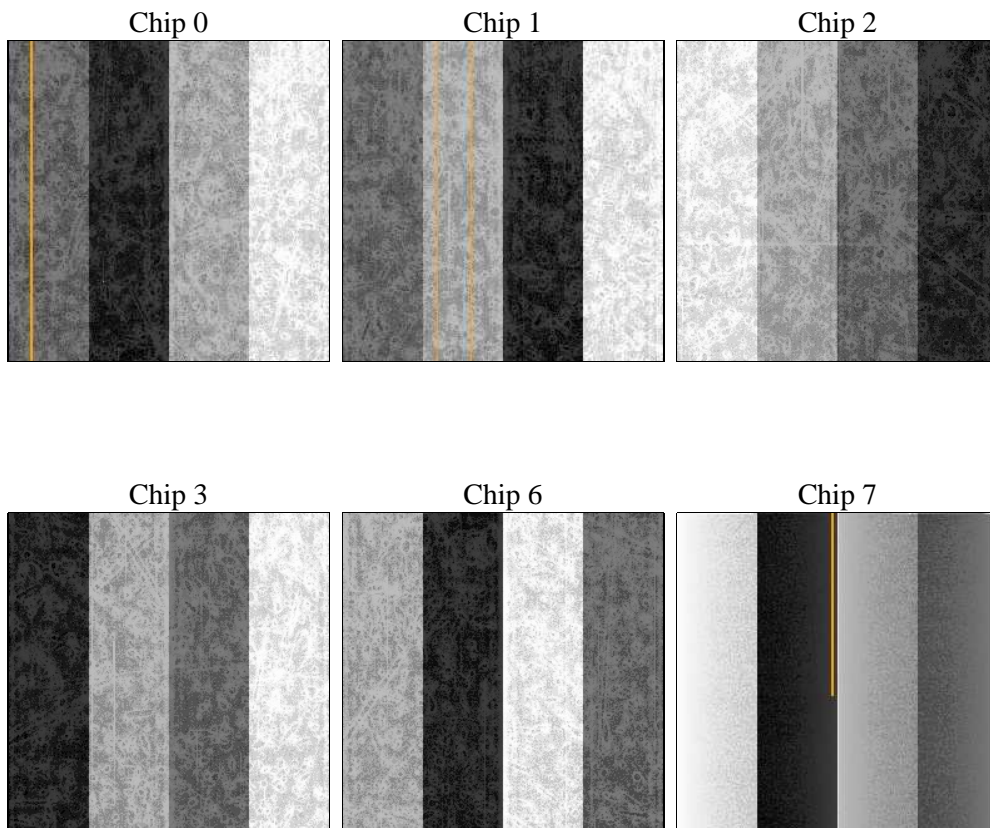
2 OBI

2.1 OBI

2.1.1 Images



2.1.2 Bias



2.1.3 Parameters

obi_num	0	Obi number	sched_exp_time	0.0	[s] Scheduled observation exposure time
ascdsver	8.4.3	Processing system revision	ontime	3107.1999884248	Sum of GTIs [s]
caldbver	4.4.8	 	ontime0	2585.4024187922	Sum of GTIs [s]
date	2012-03-30T07:00:52	Date and time of file creation	ontime1	2672.9085587859	Sum of GTIs [s]
revision	2	Processing version of data	ontime2	2520.5823949277	Sum of GTIs [s]
			ontime3	2588.6431705058	Sum of GTIs [s]
			ontime6	2666.4266480505	Sum of GTIs [s]
			ontime7	3107.1999884248	Sum of GTIs [s]
			l1events	576602	Number of level 1 events

2.1.4 Events

	ccd 0	ccd 1	ccd 2	ccd 3	ccd 6	ccd 7		ccd 0	ccd 1	ccd 2	ccd 3	ccd 6	ccd 7
level 1 events	90876	93035	87485	91655	98054	115497	grade 0 events	35247	35989	35120	36567	36744	21931
rejected events	24408	23435	23702	23881	26083	23324		38%	38%	40%	39%	37%	18%
rejected %	26%	25%	27%	26%	26%	20%	grade 1 events	257	246	280	320	275	86
								0%	0%	0%	0%	0%	0%
							grade 2 events	11411	12922	10378	11548	12563	20031
								12%	13%	11%	12%	12%	17%
							grade 3 events	4277	4276	4007	4422	4354	8488
								4%	4%	4%	4%	4%	7%
							grade 4 events	4149	4347	4114	4354	4443	8352
								4%	4%	4%	4%	4%	7%
							grade 5 events	1347	1455	1231	1423	1504	3931
								1%	1%	1%	1%	1%	3%
							grade 6 events	11384	12066	10164	10883	13867	33371
								12%	12%	11%	11%	14%	28%
							grade 7 events	22804	21734	22191	22138	24304	19307
								25%	23%	25%	24%	24%	16%

2.2 Compared Parameters

Parameter	Planned	Actual	Parameter	Planned	Actual
Instrument	ACIS	ACIS	Obspar format version number	7	7
Detector	ACIS-012367	ACIS-012367	Obspar file type	PREDICTED	ACTUAL
Grating	NONE	NONE	Obspar update status	NONE	UPDATED
Data mode	FAINT	FAINT	On-chip summing requested	N	N
Observation mode	SECONDARY	SECONDARY	Subarray requested	NONE	NONE
[deg] Pointing RA	0	197.0333969231766	Alternating exposures requested	N	N
[deg] Pointing Dec	0	-37.99435732347128	[s] Primary exposure time	3.2	3.2
[deg] Pointing Roll	0.0	344.5863651477746			
[mm] SIM focus pos	-0.782348	-0.6828225247311905			
[mm] SIM defocus	0	0.8505141146731063			
[mm] SIM translation stage pos	-233.592463	250.466033080201			
[mm] SIM translation stage offset	0	-0.01005468664627074			
[s] Observation start time (MET)	261583455.952289	261583454.92728			
Observation start date	2006-04-16T14:04:16	2006-04-16T14:04:14			
[s] Observation end time (MET)	261598759.203002	261598758.178			
Observation end date	2006-04-16T18:19:19	2006-04-16T18:19:18			
Read mode	TIMED	TIMED			

2.3 Star Slots

2.4 FID Slots

A Summary

A.1 Status

V&V Scientist	Beth Sundheim
V&V Date (YYYY-MM-DD)	2012.04.02
V&V Edition	1
V&V Disposition and Status	OK
V&V Charge Time	3.1071999884248

A.2 Comments