

V&V Reference Report

L2 ASCDS Version : 8.4.3

Observation 59000 - L2 Version 2
Chandra X-Ray Center

L2 Processing Date : Mar 30 2012

Contents

1	Front	2
2	OBI	3
2.1	OBI	3
2.1.1	Images	3
2.1.2	Bias	3
2.1.3	Parameters	4
2.1.4	Events	4
2.2	Compared Parameters	5
2.3	Star Slots	6
2.4	FID Slots	6
A	Summary	7
A.1	Status	7
A.2	Comments	7

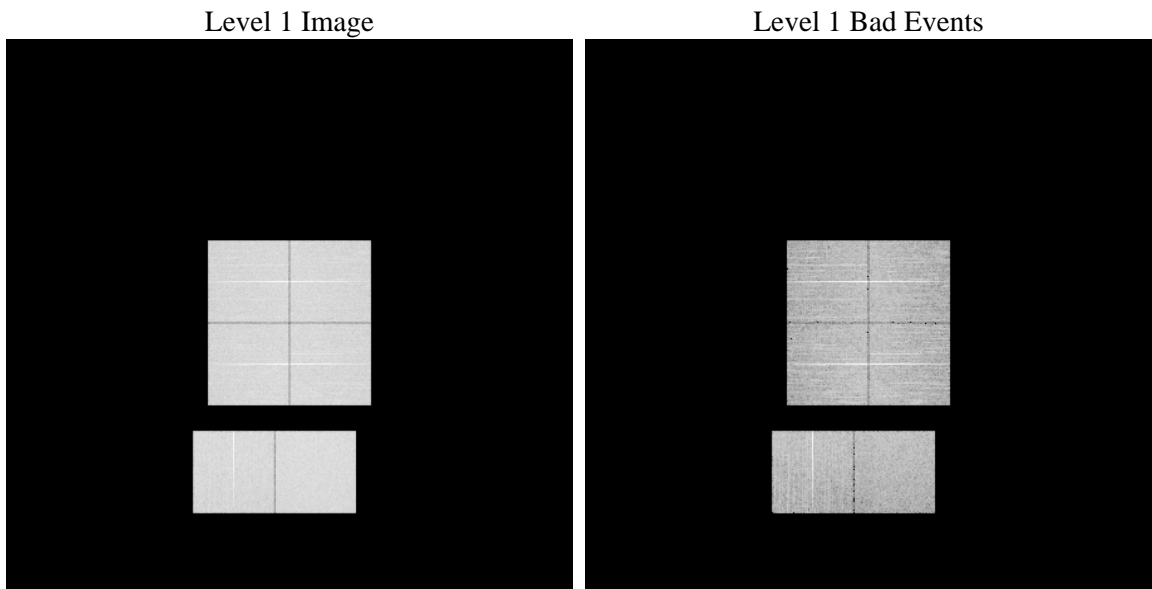
1 Front

seq_num	 	Sequence number
obs_id	59000	Observation id
title	ACIS-012367 diagnostics	Proposal title
observer	CHANDRA engineering request/realtime commanding	Principal investig
object	 	Source name
dtcycle	0	
cycle	P	events from which exps? Prim/Second/Both
ra_targ	0.0	Observer's specified target RA [deg]
dec_targ	0.0	Observer's specified target Dec [deg]
ra_nom	218.02615263926	Nominal RA [deg]
dec_nom	-41.979552100894	Nominal Dec [deg]
roll_nom	11.544850848146	Nominal Roll [deg]
revision	2	Processing version of data
ontime	8255.999969244	Sum of GTIs [s]
livetime	8151.4575264671	Livetime [s]
ontime0	8255.999969244	Sum of GTIs [s]
ontime1	8255.999969244	Sum of GTIs [s]
ontime2	8255.9665488005	Sum of GTIs [s]
ontime3	8255.999969244	Sum of GTIs [s]
ontime6	8255.925508827	Sum of GTIs [s]
ontime7	8255.999969244	Sum of GTIs [s]
l2events	938562	Number of level 2 events

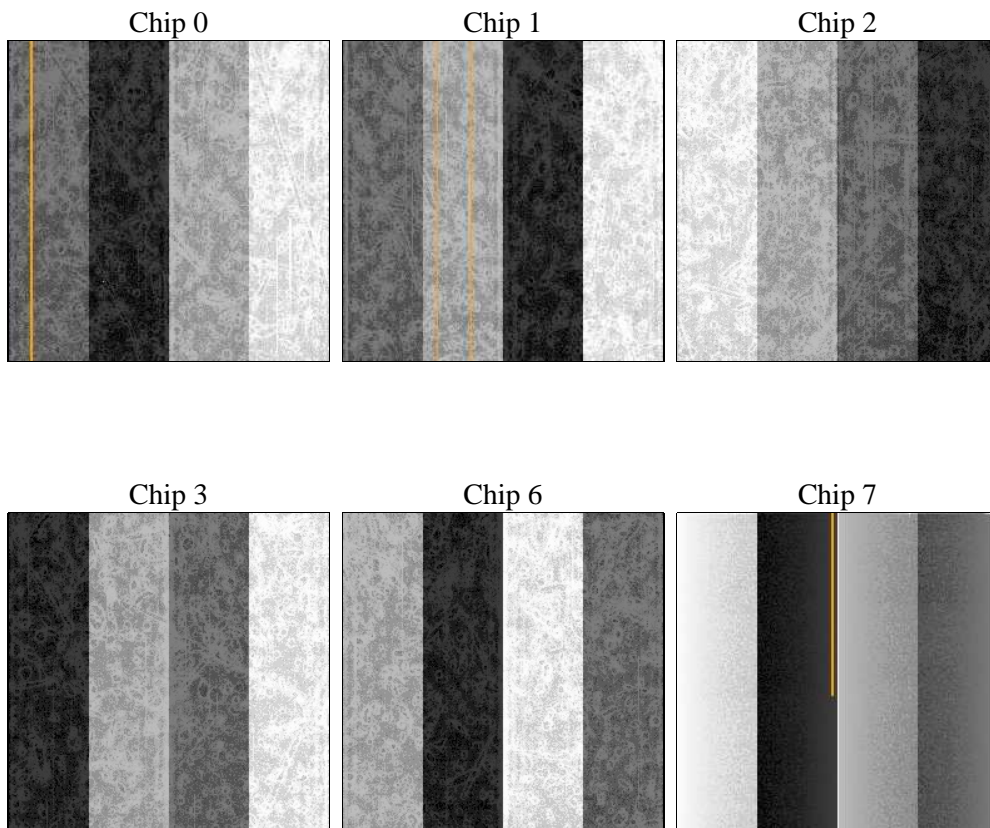
2 OBI

2.1 OBI

2.1.1 Images



2.1.2 Bias



2.1.3 Parameters

obi_num	0	Obi number	sched_exp_time	0.0	[s] Scheduled observation exposure time
ascdsver	8.4.3.1	Processing system revision	ontime	8255.999969244	Sum of GTIs [s]
caldsver	4.4.8	 	ontime0	8255.999969244	Sum of GTIs [s]
date	2012-03-30T20:02:56	Date and time of file creation	ontime1	8255.999969244	Sum of GTIs [s]
revision	2	Processing version of data	ontime2	8255.9665488005	Sum of GTIs [s]
			ontime3	8255.999969244	Sum of GTIs [s]
			ontime6	8255.925508827	Sum of GTIs [s]
			ontime7	8255.999969244	Sum of GTIs [s]
			l1events	1397462	Number of level 1 events

2.1.4 Events

	ccd 0	ccd 1	ccd 2	ccd 3	ccd 6	ccd 7		ccd 0	ccd 1	ccd 2	ccd 3	ccd 6	ccd 7
level 1 events	225315	224107	231054	231121	235576	250289	grade 0 events	86307	85368	88762	88836	89007	42766
rejected events	67639	66544	71604	71863	70782	60556		38%	38%	38%	38%	37%	17%
rejected %	30%	29%	30%	31%	30%	24%	grade 1 events	558	486	656	632	542	185
								0%	0%	0%	0%	0%	0%
							grade 2 events	27659	28302	26936	27033	28682	41558
								12%	12%	11%	11%	12%	16%
							grade 3 events	10436	10287	10622	10753	10395	18722
								4%	4%	4%	4%	4%	7%
							grade 4 events	10240	10260	10496	10706	10417	18551
								4%	4%	4%	4%	4%	7%
							grade 5 events	3791	3987	3652	4155	4157	10178
								1%	1%	1%	1%	1%	4%
							grade 6 events	23490	23764	23067	22380	26760	68663
								10%	10%	9%	9%	11%	27%
							grade 7 events	62834	61653	66863	66626	65616	49666
								27%	27%	28%	28%	27%	19%

2.2 Compared Parameters

Parameter	Planned	Actual
Instrument	ACIS	ACIS
Detector	ACIS-012367	ACIS-012367
Grating	NONE	NONE
Data mode	FAINT	FAINT
Observation mode	SECONDARY	SECONDARY
[deg] Pointing RA	0	218.0261526392627
[deg] Pointing Dec	0	-41.97955210089353
[deg] Pointing Roll	0.0	11.54485084814649
[mm] SIM focus pos	-0.782348	-0.6828225247311905
[mm] SIM defocus	0	0.8505141146731063
[mm] SIM translation stage pos	-233.592463	250.466033080201
[mm] SIM translation stage offset	0	-0.01005468664627074
[s] Observation start time (MET)	262306203.98598	262306202.96099
Observation start date	2006-04-24T22:50:04	2006-04-24T22:50:02
[s] Observation end time (MET)	262328602.287024	262328601.26203
Observation end date	2006-04-25T05:03:22	2006-04-25T05:03:21
Read mode	TIMED	TIMED

Parameter	Planned	Actual
Obspar format version number	7	7
Obspar file type	PREDICTED	ACTUAL
Obspar update status	NONE	UPDATED
On-chip summing requested	N	N
Subarray requested	NONE	NONE
Alternating exposures requested	N	N
[s] Primary exposure time	3.2	3.2

2.3 Star Slots

2.4 FID Slots

A Summary

A.1 Status

V&V Scientist	Jen Lauer
V&V Date (YYYY-MM-DD)	2012.04.02
V&V Edition	1
V&V Disposition and Status	OK
V&V Charge Time	8.255999969244

A.2 Comments