

V&V Reference Report

L2 ASCDS Version : 8.4.3

Observation 58993 - L2 Version 2
Chandra X-Ray Center

L2 Processing Date : Mar 30 2012

Contents

1	Front	2
2	OBI	3
2.1	OBI	3
2.1.1	Images	3
2.1.2	Bias	3
2.1.3	Parameters	4
2.1.4	Events	4
2.2	Compared Parameters	5
2.3	Star Slots	6
2.4	FID Slots	6
A	Summary	7
A.1	Status	7
A.2	Comments	7

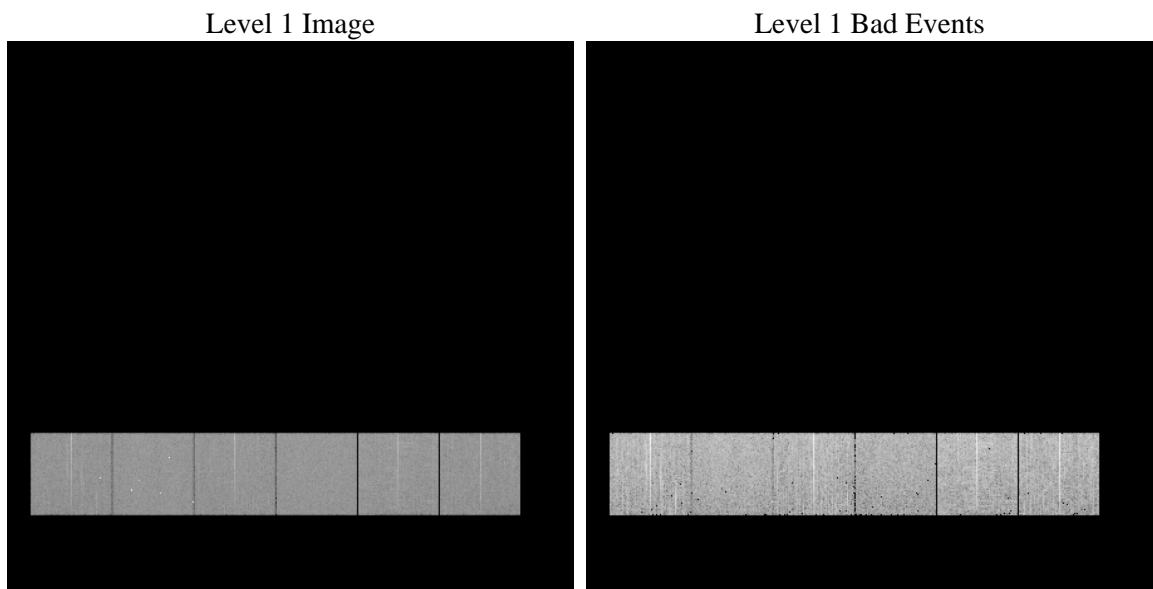
1 Front

seq_num	 	Sequence number
obs_id	58993	Observation id
title	ACIS-456789 diagnostics	Proposal title
observer	CHANDRA engineering request/realtime commanding	Principal investig
object	 	Source name
dtcycle	0	
cycle	P	events from which exps? Prim/Second/Both
ra_targ	0.0	Observer's specified target RA [deg]
dec_targ	0.0	Observer's specified target Dec [deg]
ra_nom	245.98524385552	Nominal RA [deg]
dec_nom	-18.475035888502	Nominal Dec [deg]
roll_nom	86.464494923043	Nominal Roll [deg]
revision	2	Processing version of data
ontime	4873.5999818444	Sum of GTIs [s]
livetime	4811.8875243447	Livetime [s]
ontime4	4873.5999818444	Sum of GTIs [s]
ontime5	4873.5999818444	Sum of GTIs [s]
ontime6	4873.5999818444	Sum of GTIs [s]
ontime7	4873.5999818444	Sum of GTIs [s]
ontime8	4873.5999818444	Sum of GTIs [s]
ontime9	4873.5999818444	Sum of GTIs [s]
l2events	560488	Number of level 2 events

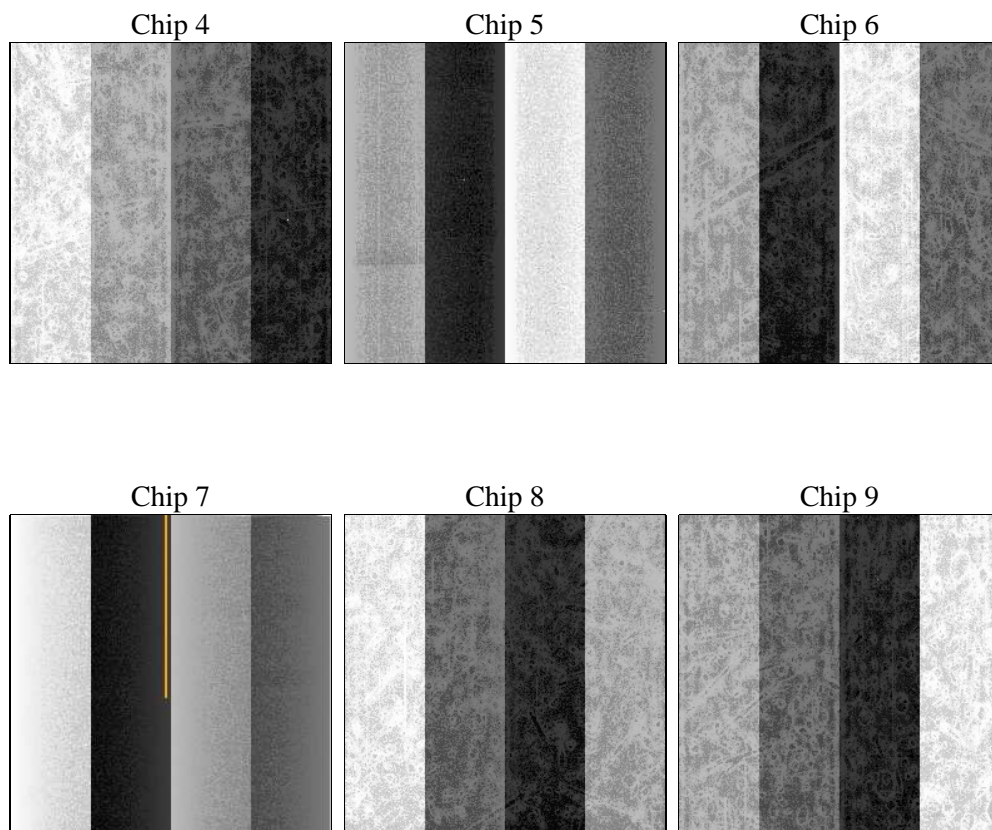
2 OBI

2.1 OBI

2.1.1 Images



2.1.2 Bias



2.1.3 Parameters

obi_num	0	Obi number	sched_exp_time	0.0	[s] Scheduled observation exposure time
ascdsver	8.4.3.1	Processing system revision	ontime	4873.5999818444	Sum of GTIs [s]
caldsver	4.4.8	 	ontime4	4873.5999818444	Sum of GTIs [s]
date	2012-03-30T21:20:59	Date and time of file creation	ontime5	4873.5999818444	Sum of GTIs [s]
revision	2	Processing version of data	ontime6	4873.5999818444	Sum of GTIs [s]
			ontime7	4873.5999818444	Sum of GTIs [s]
			ontime8	4873.5999818444	Sum of GTIs [s]
			ontime9	4873.5999818444	Sum of GTIs [s]
			l1events	858981	Number of level 1 events

2.1.4 Events

	ccd 4	ccd 5	ccd 6	ccd 7	ccd 8	ccd 9		ccd 4	ccd 5	ccd 6	ccd 7	ccd 8	ccd 9
level 1 events	136859	146380	141184	146295	150680	137583	grade 0 events	53321	22912	52352	25431	54653	50862
rejected events	45664	38664	43815	34627	47571	44432		38%	15%	37%	17%	36%	36%
rejected %	33%	26%	31%	23%	31%	32%	grade 1 events	481	186	280	90	322	358
								0%	0%	0%	0%	0%	0%
							grade 2 events	14249	37937	17299	24465	18298	16068
								10%	25%	12%	16%	12%	11%
							grade 3 events	6137	5932	5977	11005	7066	6096
								4%	4%	4%	7%	4%	4%
							grade 4 events	6060	5810	6118	10872	6991	5977
								4%	3%	4%	7%	4%	4%
							grade 5 events	2340	5548	2508	5950	3086	2778
								1%	3%	1%	4%	2%	2%
							grade 6 events	11428	35125	15623	39895	16101	14148
								8%	23%	11%	27%	10%	10%
							grade 7 events	42843	32930	41027	28587	44163	41296
								31%	22%	29%	19%	29%	30%

2.2 Compared Parameters

Parameter	Planned	Actual
Instrument	ACIS	ACIS
Detector	ACIS-456789	ACIS-456789
Grating	NONE	NONE
Data mode	FAINT	FAINT
Observation mode	SECONDARY	SECONDARY
[deg] Pointing RA	0	245.985243855522
[deg] Pointing Dec	0	-18.47503588850203
[deg] Pointing Roll	0.0	86.46449492304268
[mm] SIM focus pos	-0.684267	-0.6828225247311905
[mm] SIM defocus	0	0.8505141146731063
[mm] SIM translation stage pos	-190.132523	250.4635187648994
[mm] SIM translation stage offset	0	-0.007540371344731511
[s] Observation start time (MET)	262728600.355699	262728599.33069
Observation start date	2006-04-29T20:10:00	2006-04-29T20:09:59
[s] Observation end time (MET)	262739879.456226	262739878.43121
Observation end date	2006-04-29T23:17:59	2006-04-29T23:17:58
Read mode	TIMED	TIMED

Parameter	Planned	Actual
Obspar format version number	7	7
Obspar file type	PREDICTED	ACTUAL
Obspar update status	NONE	UPDATED
On-chip summing requested	N	N
Subarray requested	NONE	NONE
Alternating exposures requested	N	N
[s] Primary exposure time	3.2	3.2

2.3 Star Slots

2.4 FID Slots

A Summary

A.1 Status

V&V Scientist	Beth Sundheim
V&V Date (YYYY-MM-DD)	2012.04.02
V&V Edition	1
V&V Disposition and Status	OK
V&V Charge Time	4.8735999818444

A.2 Comments