

V&V Reference Report

L2 ASCDS Version : 8.4.3

Observation 58987 - L2 Version 2
Chandra X-Ray Center

L2 Processing Date : Mar 31 2012

Contents

| | | |
|----------|-------------------------------|----------|
| 1 | Front | 2 |
| 2 | OBI | 3 |
| 2.1 | OBI | 3 |
| 2.1.1 | Images | 3 |
| 2.1.2 | Bias | 3 |
| 2.1.3 | Parameters | 4 |
| 2.1.4 | Events | 4 |
| 2.2 | Compared Parameters | 5 |
| 2.3 | Star Slots | 6 |
| 2.4 | FID Slots | 6 |
| A | Summary | 7 |
| A.1 | Status | 7 |
| A.2 | Comments | 7 |

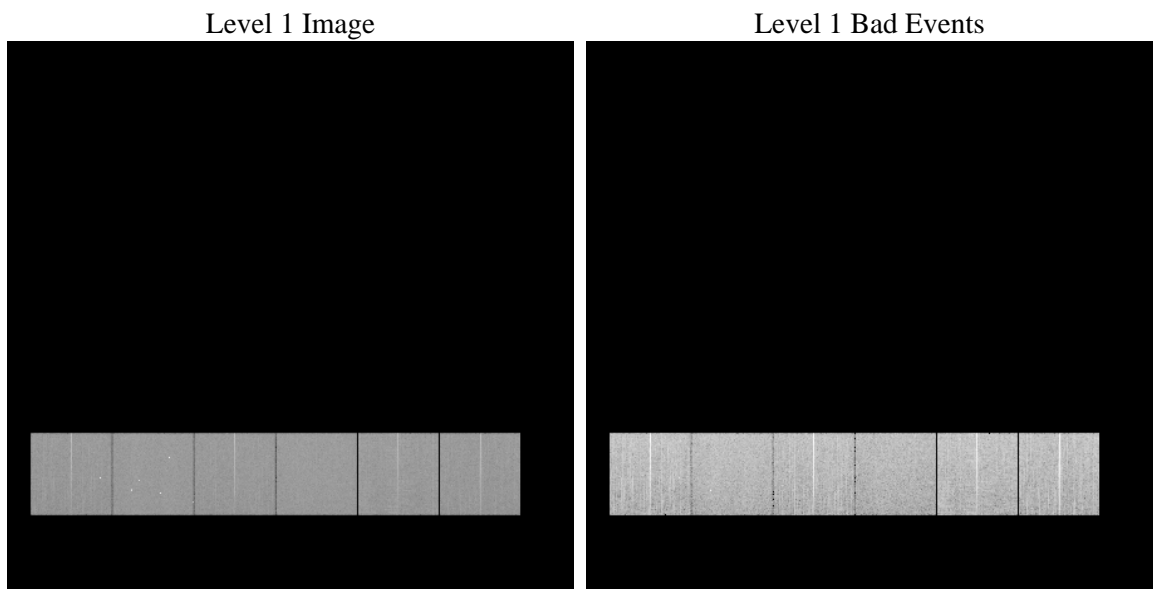
1 Front

| | | |
|----------|---|---|
| seq_num | | Sequence number |
| obs_id | 58987 | Observation id |
| title | ACIS-456789 diagnostics | Proposal title |
| observer | CHANDRA engineering request/realtime commanding | Principal investig |
| object | | Source name |
| dtcycle | 0 | |
| cycle | P | events from which exps? Prim/Second/Both |
| ra_targ | 0.0 | Observer's specified target RA [deg] |
| dec_targ | 0.0 | Observer's specified target Dec [deg] |
| ra_nom | 233.96881693837 | Nominal RA [deg] |
| dec_nom | 9.5966910362841 | Nominal Dec [deg] |
| roll_nom | 150.6821831552 | Nominal Roll [deg] |
| revision | 2 | Processing version of data |
| ontime | 8230.3999693394 | Sum of GTIs [s] |
| livetime | 8126.1816891757 | Livetime [s] |
| ontime4 | 8230.3999693394 | Sum of GTIs [s] |
| ontime5 | 8230.3999693394 | Sum of GTIs [s] |
| ontime6 | 8230.3999693394 | Sum of GTIs [s] |
| ontime7 | 8230.3999693394 | Sum of GTIs [s] |
| ontime8 | 8230.3999693394 | Sum of GTIs [s] |
| ontime9 | 8230.3999693394 | Sum of GTIs [s] |
| l2events | 944447 | Number of level 2 events |

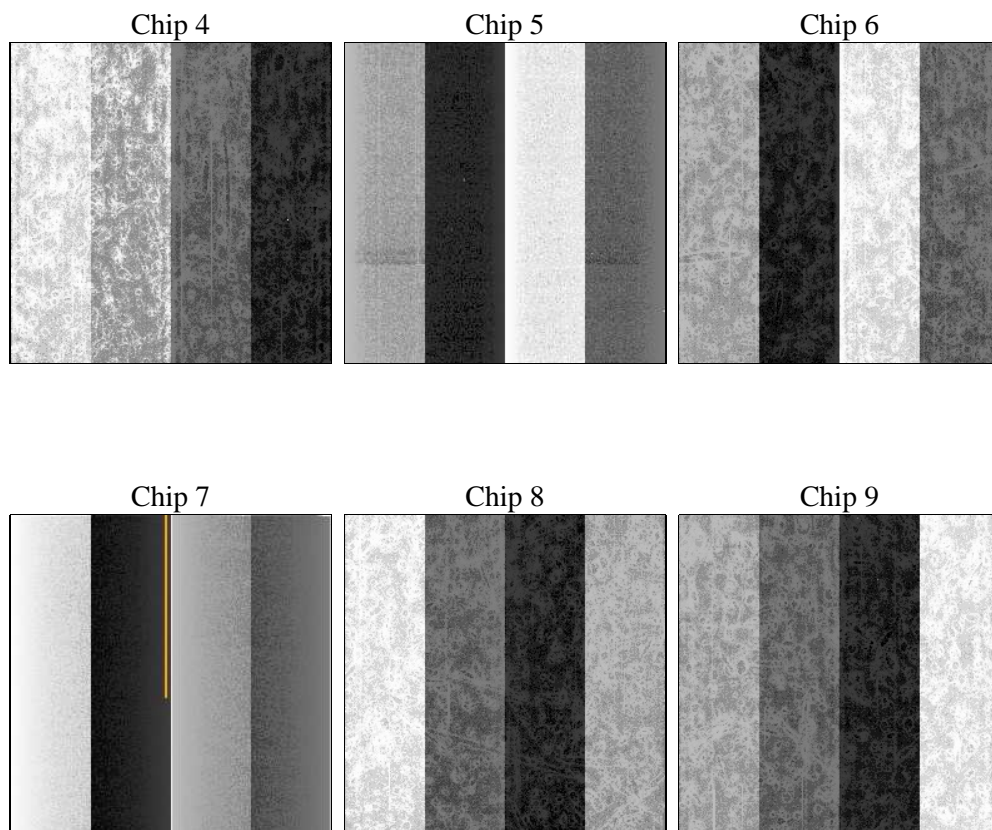
2 OBI

2.1 OBI

2.1.1 Images



2.1.2 Bias



2.1.3 Parameters

| | | | | | |
|----------|---------------------|--------------------------------|----------------|-----------------|---|
| obi_num | 0 | Obi number | sched_exp_time | 0.0 | [s] Scheduled observation exposure time |
| ascdsver | 8.4.3 | Processing system revision | ontime | 8230.3999693394 | Sum of GTIs [s] |
| caldsver | 4.4.8 | | ontime4 | 8230.3999693394 | Sum of GTIs [s] |
| date | 2012-03-31T11:43:44 | Date and time of file creation | ontime5 | 8230.3999693394 | Sum of GTIs [s] |
| revision | 2 | Processing version of data | ontime6 | 8230.3999693394 | Sum of GTIs [s] |
| | | | ontime7 | 8230.3999693394 | Sum of GTIs [s] |
| | | | ontime8 | 8230.3999693394 | Sum of GTIs [s] |
| | | | ontime9 | 8230.3999693394 | Sum of GTIs [s] |
| | | | l1events | 1459984 | Number of level 1 events |

2.1.4 Events

| | ccd 4 | ccd 5 | ccd 6 | ccd 7 | ccd 8 | ccd 9 | | ccd 4 | ccd 5 | ccd 6 | ccd 7 | ccd 8 | ccd 9 |
|-----------------|--------|--------|--------|--------|--------|--------|----------------|-------|-------|-------|-------|-------|-------|
| level 1 events | 233204 | 247272 | 238093 | 249847 | 254420 | 237148 | grade 0 events | 88880 | 37293 | 88347 | 42363 | 92481 | 87149 |
| rejected events | 79840 | 68104 | 74639 | 61778 | 80795 | 78881 | | 38% | 15% | 37% | 16% | 36% | 36% |
| rejected % | 34% | 27% | 31% | 24% | 31% | 33% | grade 1 events | 821 | 218 | 549 | 165 | 612 | 655 |
| | | | | | | | | 0% | 0% | 0% | 0% | 0% | 0% |
| | | | | | | | grade 2 events | 24518 | 63705 | 28376 | 41123 | 31183 | 27256 |
| | | | | | | | | 10% | 25% | 11% | 16% | 12% | 11% |
| | | | | | | | grade 3 events | 10568 | 9867 | 10428 | 18485 | 11625 | 10244 |
| | | | | | | | | 4% | 3% | 4% | 7% | 4% | 4% |
| | | | | | | | grade 4 events | 10225 | 9705 | 10513 | 18675 | 11641 | 10441 |
| | | | | | | | | 4% | 3% | 4% | 7% | 4% | 4% |
| | | | | | | | grade 5 events | 4243 | 10061 | 4375 | 10533 | 5264 | 4688 |
| | | | | | | | | 1% | 4% | 1% | 4% | 2% | 1% |
| | | | | | | | grade 6 events | 20020 | 59608 | 26680 | 68470 | 27634 | 24034 |
| | | | | | | | | 8% | 24% | 11% | 27% | 10% | 10% |
| | | | | | | | grade 7 events | 73929 | 56815 | 68825 | 50033 | 73980 | 72681 |
| | | | | | | | | 31% | 22% | 28% | 20% | 29% | 30% |

2.2 Compared Parameters

| Parameter | Planned | Actual |
|-----------------------------------|---------------------|----------------------|
| Instrument | ACIS | ACIS |
| Detector | ACIS-456789 | ACIS-456789 |
| Grating | NONE | NONE |
| Data mode | FAINT | FAINT |
| Observation mode | SECONDARY | SECONDARY |
| [deg] Pointing RA | 0 | 233.9688169383708 |
| [deg] Pointing Dec | 0 | 9.596691036284092 |
| [deg] Pointing Roll | 0.0 | 150.6821831552034 |
| [mm] SIM focus pos | -0.684267 | -0.6828225247311905 |
| [mm] SIM defocus | 0 | 0.8505141146731063 |
| [mm] SIM translation stage pos | -190.132523 | 250.466033080201 |
| [mm] SIM translation stage offset | 0 | -0.01005468664627074 |
| [s] Observation start time (MET) | 262989987.66787 | 262989986.64288 |
| Observation start date | 2006-05-02T20:46:28 | 2006-05-02T20:46:26 |
| [s] Observation end time (MET) | 263013527.818968 | 263013526.79397 |
| Observation end date | 2006-05-03T03:18:48 | 2006-05-03T03:18:46 |
| Read mode | TIMED | TIMED |

| Parameter | Planned | Actual |
|---------------------------------|-----------|---------|
| Obspar format version number | 7 | 7 |
| Obspar file type | PREDICTED | ACTUAL |
| Obspar update status | NONE | UPDATED |
| On-chip summing requested | N | N |
| Subarray requested | NONE | NONE |
| Alternating exposures requested | N | N |
| [s] Primary exposure time | 3.2 | 3.2 |

2.3 Star Slots

2.4 FID Slots

A Summary

A.1 Status

| | |
|----------------------------|-----------------|
| V&V Scientist | Jen Lauer |
| V&V Date (YYYY-MM-DD) | 2012.04.02 |
| V&V Edition | 1 |
| V&V Disposition and Status | OK |
| V&V Charge Time | 8.2303999693394 |

A.2 Comments