

V&V Reference Report

L2 ASCDS Version : 8.4.3

Observation 58979 - L2 Version 2
Chandra X-Ray Center

L2 Processing Date : Mar 31 2012

Contents

1	Front	2
2	OBI	3
2.1	OBI	3
2.1.1	Images	3
2.1.2	Bias	3
2.1.3	Parameters	4
2.1.4	Events	4
2.2	Compared Parameters	5
2.3	Star Slots	6
2.4	FID Slots	6
A	Summary	7
A.1	Status	7
A.2	Comments	7

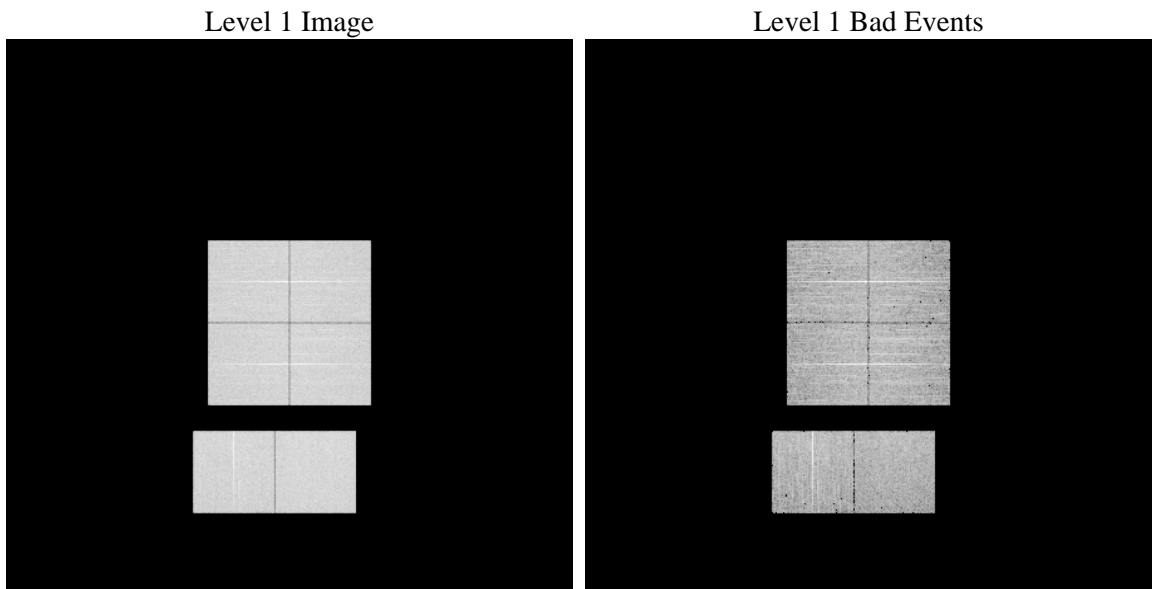
1 Front

seq_num	 	Sequence number
obs_id	58979	Observation id
title	ACIS-012367 diagnostics	Proposal title
observer	CHANDRA engineering request/realtime commanding	Principal investig
object	 	Source name
dtcycle	0	
cycle	P	events from which exps? Prim/Second/Both
ra_targ	0.0	Observer's specified target RA [deg]
dec_targ	0.0	Observer's specified target Dec [deg]
ra_nom	253.9847627917	Nominal RA [deg]
dec_nom	-20.975142052483	Nominal Dec [deg]
roll_nom	86.759038733126	Nominal Roll [deg]
revision	2	Processing version of data
ontime	5615.8939368427	Sum of GTIs [s]
livetime	5544.782106329	Livetime [s]
ontime0	5615.934956938	Sum of GTIs [s]
ontime1	5612.7350960672	Sum of GTIs [s]
ontime2	5615.9999790788	Sum of GTIs [s]
ontime3	5615.8528769314	Sum of GTIs [s]
ontime6	5615.9999790788	Sum of GTIs [s]
ontime7	5615.8939368427	Sum of GTIs [s]
l2events	664350	Number of level 2 events

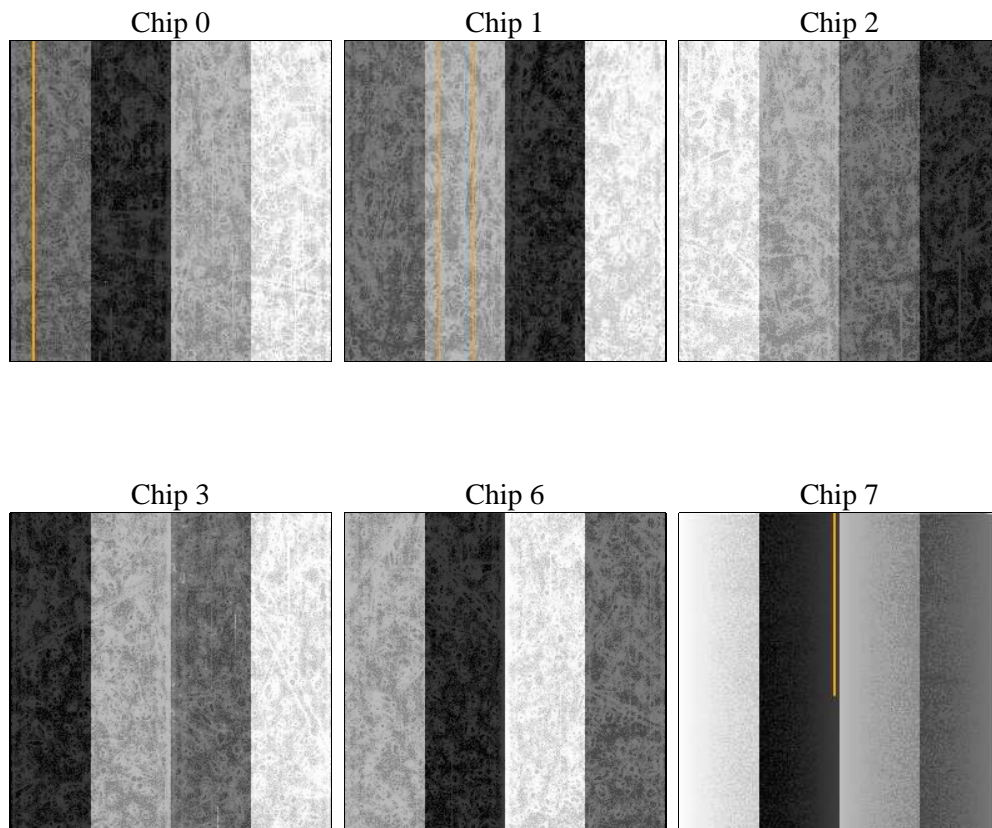
2 OBI

2.1 OBI

2.1.1 Images



2.1.2 Bias



2.1.3 Parameters

obi_num	0	Obi number	sched_exp_time	0.0	[s] Scheduled observation exposure time
ascdsver	8.4.3	Processing system revision	ontime	5615.8939368427	Sum of GTIs [s]
caldsver	4.4.8	 	ontime0	5615.934956938	Sum of GTIs [s]
date	2012-03-31T13:05:32	Date and time of file creation	ontime1	5612.7350960672	Sum of GTIs [s]
revision	2	Processing version of data	ontime2	5615.9999790788	Sum of GTIs [s]
			ontime3	5615.8528769314	Sum of GTIs [s]
			ontime6	5615.9999790788	Sum of GTIs [s]
			ontime7	5615.8939368427	Sum of GTIs [s]
			l1events	977570	Number of level 1 events

2.1.4 Events

	ccd 0	ccd 1	ccd 2	ccd 3	ccd 6	ccd 7		ccd 0	ccd 1	ccd 2	ccd 3	ccd 6	ccd 7
level 1 events	159894	157596	159143	163094	164969	172874	grade 0 events	60944	60579	62233	63308	62563	30160
rejected events	47920	45197	47541	49352	47464	40444		38%	38%	39%	38%	37%	17%
rejected %	29%	28%	29%	30%	28%	23%	grade 1 events	373	382	459	417	362	116
								0%	0%	0%	0%	0%	0%
							grade 2 events	19692	20420	18739	19403	20479	29071
								12%	12%	11%	11%	12%	16%
							grade 3 events	7303	7208	7259	7253	7366	12775
								4%	4%	4%	4%	4%	7%
							grade 4 events	7265	7067	7273	7579	7464	12972
								4%	4%	4%	4%	4%	7%
							grade 5 events	2509	2699	2424	2896	2902	6861
								1%	1%	1%	1%	1%	3%
							grade 6 events	16770	17125	16098	16199	19633	47452
								10%	10%	10%	9%	11%	27%
							grade 7 events	45038	42116	44658	46039	44200	33467
								28%	26%	28%	28%	26%	19%

2.2 Compared Parameters

Parameter	Planned	Actual
Instrument	ACIS	ACIS
Detector	ACIS-012367	ACIS-012367
Grating	NONE	NONE
Data mode	FAINT	FAINT
Observation mode	SECONDARY	SECONDARY
[deg] Pointing RA	0	253.9847627916993
[deg] Pointing Dec	0	-20.97514205248298
[deg] Pointing Roll	0.0	86.75903873312583
[mm] SIM focus pos	-0.782348	-0.7809083437167272
[mm] SIM defocus	0	0.7524282956875696
[mm] SIM translation stage pos	-233.592463	250.4635187648994
[mm] SIM translation stage offset	0	-0.007540371344731511
[s] Observation start time (MET)	263413206.087608	263413205.06262
Observation start date	2006-05-07T18:20:06	2006-05-07T18:20:05
[s] Observation end time (MET)	263421065.787974	263421064.76298
Observation end date	2006-05-07T20:31:06	2006-05-07T20:31:04
Read mode	TIMED	TIMED

Parameter	Planned	Actual
Obspar format version number	7	7
Obspar file type	PREDICTED	ACTUAL
Obspar update status	NONE	UPDATED
On-chip summing requested	N	N
Subarray requested	NONE	NONE
Alternating exposures requested	N	N
[s] Primary exposure time	3.2	3.2

2.3 Star Slots

2.4 FID Slots

A Summary

A.1 Status

V&V Scientist	Jen Lauer
V&V Date (YYYY-MM-DD)	2012.04.02
V&V Edition	1
V&V Disposition and Status	OK
V&V Charge Time	5.6158939368427

A.2 Comments