

# V&V Reference Report

## L2 ASCDS Version : 8.4.3

Observation 58965 - L2 Version 2  
Chandra X-Ray Center

L2 Processing Date : Apr 1 2012

## Contents

<b>1</b>	<b>Front</b>	<b>2</b>
<b>2</b>	<b>OBI</b>	<b>3</b>
2.1	OBI . . . . .	3
2.1.1	Images . . . . .	3
2.1.2	Bias . . . . .	3
2.1.3	Parameters . . . . .	4
2.1.4	Events . . . . .	4
2.2	Compared Parameters . . . . .	5
2.3	Star Slots . . . . .	6
2.4	FID Slots . . . . .	6
<b>A</b>	<b>Summary</b>	<b>7</b>
A.1	Status . . . . .	7
A.2	Comments . . . . .	7

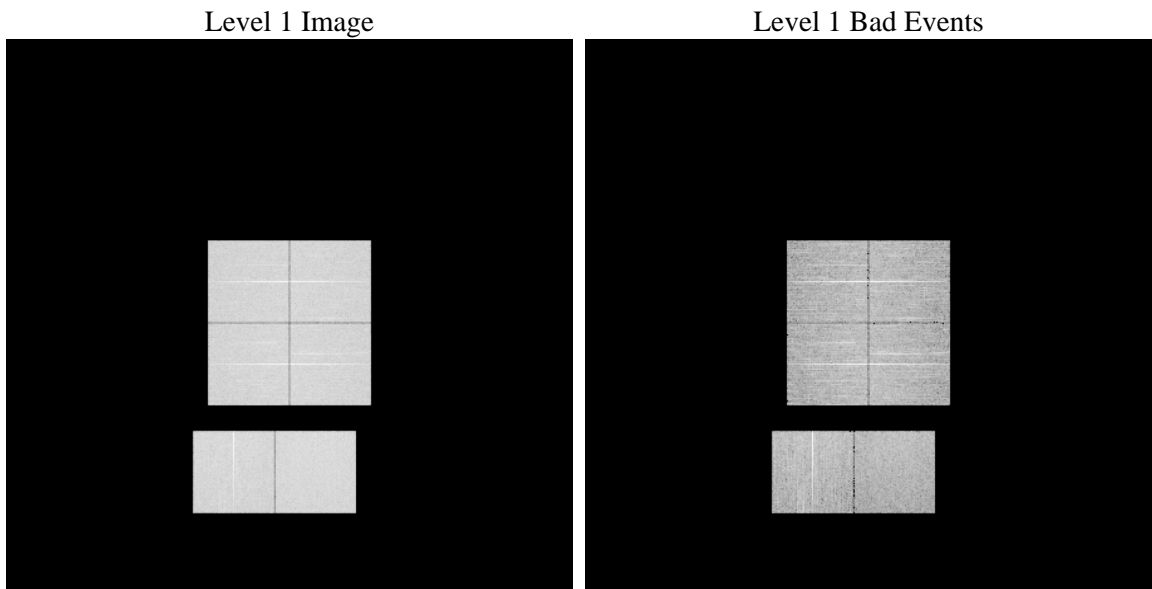
# 1 Front

seq_num	&#160	Sequence number
obs_id	58965	Observation id
title	ACIS-012367 diagnostics	Proposal title
observer	CHANDRA engineering request/realtime commanding	Principal investig
object	&#160	Source name
dtycle	0	&#160
cycle	P	events from which exps? Prim/Second/Both
ra_targ	0.0	Observer's specified target RA [deg]
dec_targ	0.0	Observer's specified target Dec [deg]
ra_nom	260.99875403243	Nominal RA [deg]
dec_nom	-39.968984200397	Nominal Dec [deg]
roll_nom	57.592310126798	Nominal Roll [deg]
revision	2	Processing version of data
ontime	8275.1999691725	Sum of GTIs [s]
livetime	8170.4144044356	Livetime [s]
ontime0	8271.958988905	Sum of GTIs [s]
ontime1	8275.1999691725	Sum of GTIs [s]
ontime2	8275.1999691725	Sum of GTIs [s]
ontime3	8271.9589888752	Sum of GTIs [s]
ontime6	8275.1999691725	Sum of GTIs [s]
ontime7	8275.1999691725	Sum of GTIs [s]
l2events	926890	Number of level 2 events

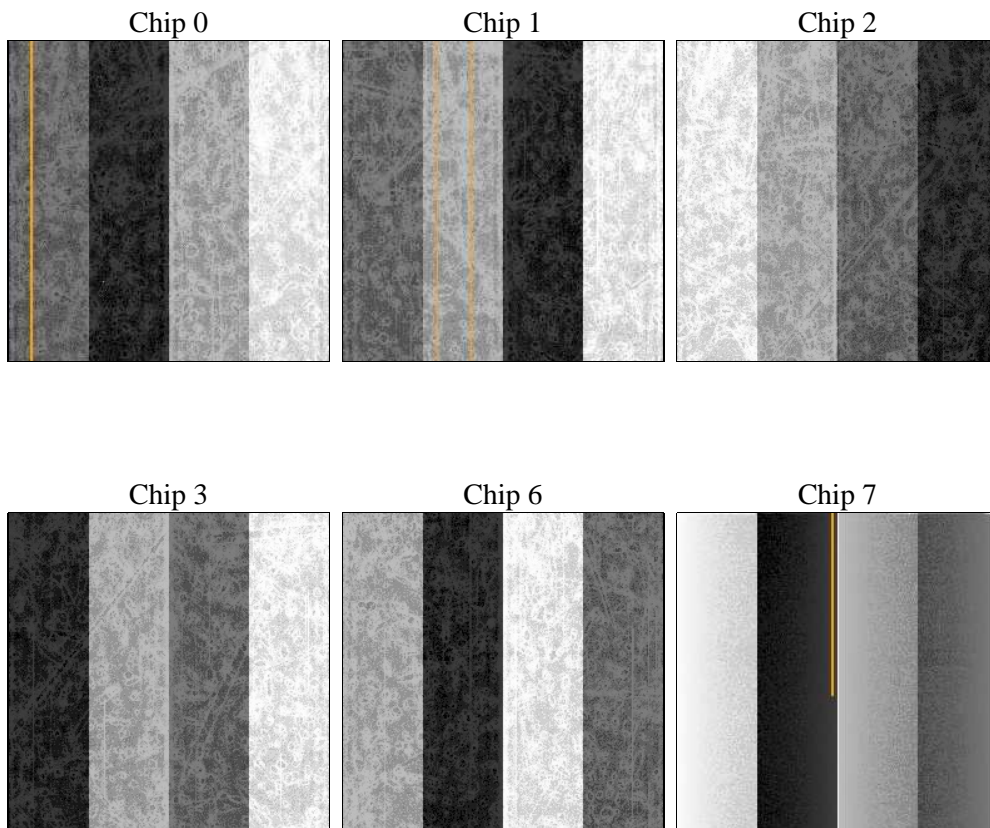
## 2 OBI

### 2.1 OBI

#### 2.1.1 Images



#### 2.1.2 Bias



### 2.1.3 Parameters

obi_num	0	Obi number	sched_exp_time	0.0	[s] Scheduled observation exposure time
ascdsver	8.4.3	Processing system revision	ontime	8275.1999691725	Sum of GTIs [s]
caldsver	4.4.9	&#160	ontime0	8271.958988905	Sum of GTIs [s]
date	2012-04-01T06:28:30	Date and time of file creation	ontime1	8275.1999691725	Sum of GTIs [s]
revision	2	Processing version of data	ontime2	8275.1999691725	Sum of GTIs [s]
			ontime3	8271.9589888752	Sum of GTIs [s]
			ontime6	8275.1999691725	Sum of GTIs [s]
			ontime7	8275.1999691725	Sum of GTIs [s]
			l1events	1380553	Number of level 1 events

### 2.1.4 Events

	ccd 0	ccd 1	ccd 2	ccd 3	ccd 6	ccd 7		ccd 0	ccd 1	ccd 2	ccd 3	ccd 6	ccd 7
level 1 events	220515	222160	227856	227201	236255	246566	grade 0 events	85028	84484	86834	87532	87524	42175
rejected events	65272	65855	71368	69870	73183	59063		38%	38%	38%	38%	37%	17%
rejected %	29%	29%	31%	30%	30%	23%	grade 1 events	562	508	664	600	543	166
								0%	0%	0%	0%	0%	0%
							grade 2 events	27110	28188	26567	26916	28204	40545
								12%	12%	11%	11%	11%	16%
							grade 3 events	10001	10057	10341	10309	10393	18286
								4%	4%	4%	4%	4%	7%
							grade 4 events	9983	10067	10351	10565	10259	18011
								4%	4%	4%	4%	4%	7%
							grade 5 events	3689	4125	3632	4159	4113	10216
								1%	1%	1%	1%	1%	4%
							grade 6 events	23121	23509	22395	22009	26692	68486
								10%	10%	9%	9%	11%	27%
							grade 7 events	61021	61222	67072	65111	68527	48681
								27%	27%	29%	28%	29%	19%

## 2.2 Compared Parameters

Parameter	Planned	Actual	Parameter	Planned	Actual
Instrument	ACIS	ACIS	Obspar format version number	7	7
Detector	ACIS-012367	ACIS-012367	Obspar file type	PREDICTED	ACTUAL
Grating	NONE	NONE	Obspar update status	NONE	UPDATED
Data mode	FAINT	FAINT	On-chip summing requested	N	N
Observation mode	SECONDARY	SECONDARY	Subarray requested	NONE	NONE
[deg] Pointing RA	0	260.9987540324288	Alternating exposures requested	N	N
[deg] Pointing Dec	0	-39.96898420039718	[s] Primary exposure time	3.2	3.2
[deg] Pointing Roll	0.0	57.59231012679761			
[mm] SIM focus pos	-0.782348	-0.6828225247311905			
[mm] SIM defocus	0	0.8505141146731063			
[mm] SIM translation stage pos	-233.592463	250.466033080201			
[mm] SIM translation stage offset	0	-0.01005468664627074			
[s] Observation start time (MET)	264135853.671328	264135852.64632			
Observation start date	2006-05-16T03:04:14	2006-05-16T03:04:12			
[s] Observation end time (MET)	264159151.922415	264159150.89741			
Observation end date	2006-05-16T09:32:32	2006-05-16T09:32:30			
Read mode	TIMED	TIMED			

## 2.3 Star Slots

## 2.4 FID Slots

## **A Summary**

### **A.1 Status**

V&V Scientist	Jen Lauer
V&V Date (YYYY-MM-DD)	2012.04.03
V&V Edition	1
V&V Disposition and Status	OK
V&V Charge Time	8.2751999691725

### **A.2 Comments**