

V&V Reference Report

L2 ASCDS Version : 8.4.3

Observation 58961 - L2 Version 2
Chandra X-Ray Center

L2 Processing Date : Apr 2 2012

Contents

1	Front	2
2	OBI	3
2.1	OBI	3
2.1.1	Images	3
2.1.2	Bias	3
2.1.3	Parameters	4
2.1.4	Events	4
2.2	Compared Parameters	5
2.3	Star Slots	6
2.4	FID Slots	6
A	Summary	7
A.1	Status	7
A.2	Comments	7

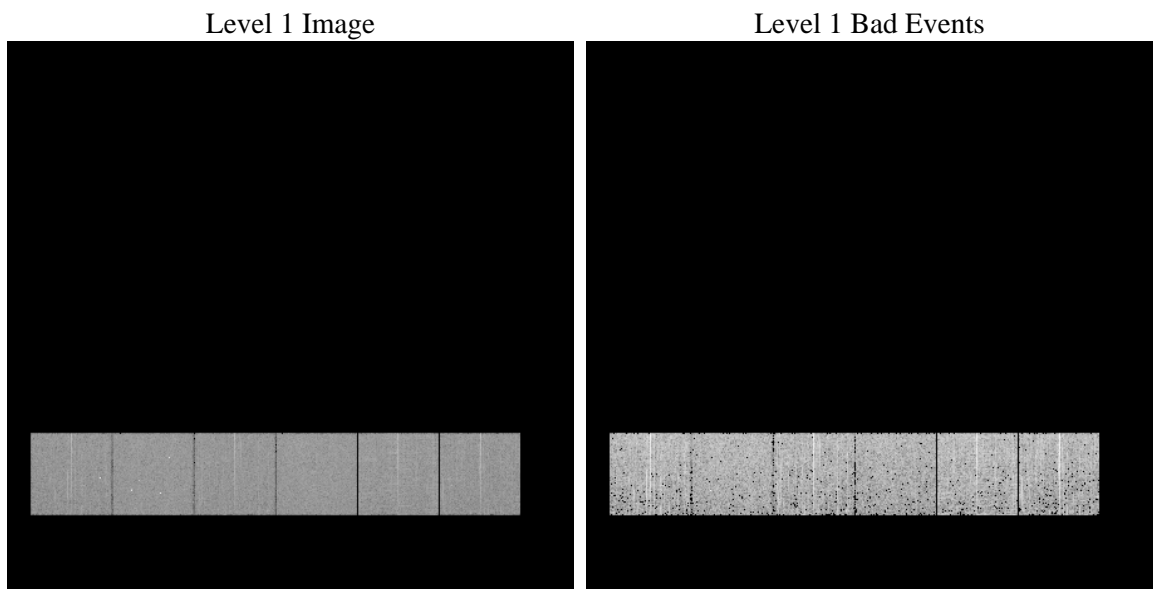
1 Front

seq_num	 	Sequence number
obs_id	58961	Observation id
title	ACIS-456789 diagnostics	Proposal title
observer	CHANDRA engineering request/realtime commanding	Principal investig
object	 	Source name
dtcycle	0	
cycle	P	events from which exps? Prim/Second/Both
ra_targ	0.0	Observer's specified target RA [deg]
dec_targ	0.0	Observer's specified target Dec [deg]
ra_nom	204.02350888941	Nominal RA [deg]
dec_nom	-31.020329773493	Nominal Dec [deg]
roll_nom	281.95540846983	Nominal Roll [deg]
revision	2	Processing version of data
ontime	2805.0119137466	Sum of GTIs [s]
livetime	2769.4931639193	Livetime [s]
ontime4	2804.8887937367	Sum of GTIs [s]
ontime5	2804.9708737433	Sum of GTIs [s]
ontime6	2804.92983374	Sum of GTIs [s]
ontime7	2805.0119137466	Sum of GTIs [s]
ontime8	2804.8477537632	Sum of GTIs [s]
ontime9	2805.0529537499	Sum of GTIs [s]
l2events	325403	Number of level 2 events

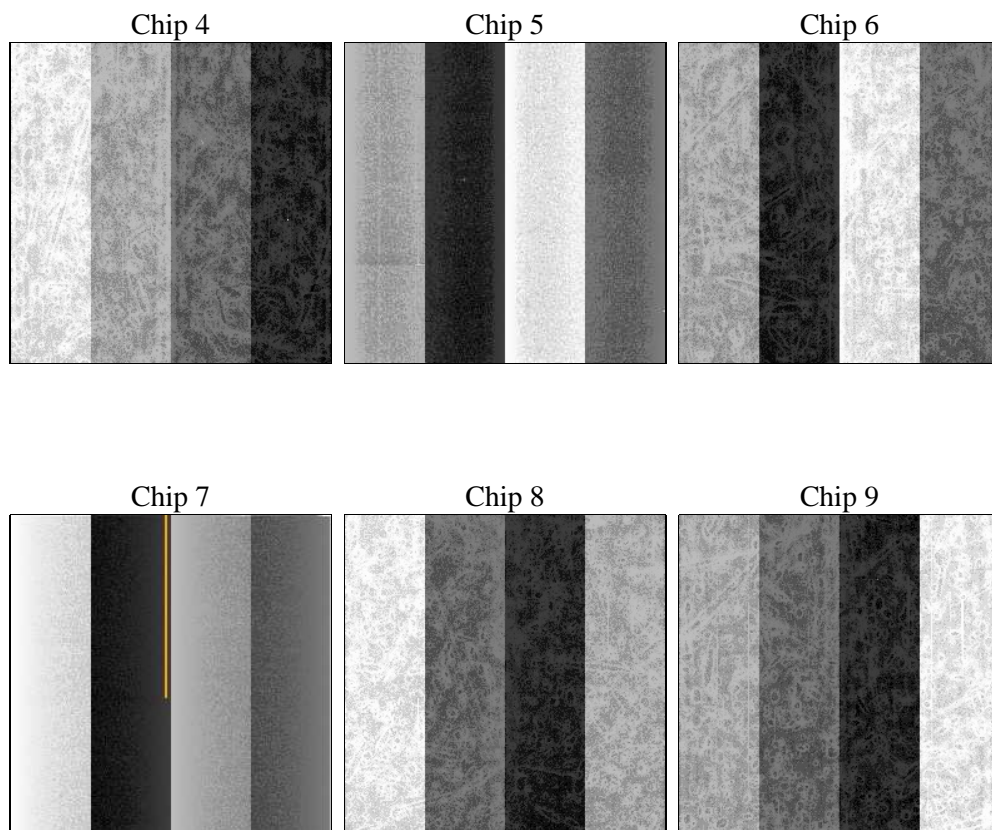
2 OBI

2.1 OBI

2.1.1 Images



2.1.2 Bias



2.1.3 Parameters

obi_num	0	Obi number	sched_exp_time	0.0	[s] Scheduled observation exposure time
ascdsver	8.4.3	Processing system revision	ontime	2805.0119137466	Sum of GTIs [s]
caldsver	4.4.9	 	ontime4	2804.8887937367	Sum of GTIs [s]
date	2012-04-02T03:55:55	Date and time of file creation	ontime5	2804.9708737433	Sum of GTIs [s]
revision	2	Processing version of data	ontime6	2804.92983374	Sum of GTIs [s]
			ontime7	2805.0119137466	Sum of GTIs [s]
			ontime8	2804.8477537632	Sum of GTIs [s]
			ontime9	2805.0529537499	Sum of GTIs [s]
			l1events	497014	Number of level 1 events

2.1.4 Events

	ccd 4	ccd 5	ccd 6	ccd 7	ccd 8	ccd 9		ccd 4	ccd 5	ccd 6	ccd 7	ccd 8	ccd 9
level 1 events	79592	83775	80842	84871	87403	80531	grade 0 events	30798	12682	30314	14724	31700	29847
rejected events	26489	22589	24621	20196	27473	25812		38%	15%	37%	17%	36%	37%
rejected %	33%	26%	30%	23%	31%	32%	grade 1 events	288	143	160	45	202	224
								0%	0%	0%	0%	0%	0%
							grade 2 events	8261	21681	9653	14029	10691	9303
								10%	25%	11%	16%	12%	11%
							grade 3 events	3590	3396	3577	6248	4078	3589
								4%	4%	4%	7%	4%	4%
							grade 4 events	3571	3281	3529	6268	4061	3564
								4%	3%	4%	7%	4%	4%
							grade 5 events	1381	3290	1459	3501	1863	1564
								1%	3%	1%	4%	2%	1%
							grade 6 events	6953	20219	9211	23471	9467	8489
								8%	24%	11%	27%	10%	10%
							grade 7 events	24750	19083	22939	16585	25341	23951
								31%	22%	28%	19%	28%	29%

2.2 Compared Parameters

Parameter	Planned	Actual
Instrument	ACIS	ACIS
Detector	ACIS-456789	ACIS-456789
Grating	NONE	NONE
Data mode	FAINT	FAINT
Observation mode	SECONDARY	SECONDARY
[deg] Pointing RA	0	204.0235088894127
[deg] Pointing Dec	0	-31.02032977349331
[deg] Pointing Roll	0.0	281.9554084698299
[mm] SIM focus pos	-0.684267	-0.6828225247311905
[mm] SIM defocus	0	0.8505141146731063
[mm] SIM translation stage pos	-190.132523	250.4635187648994
[mm] SIM translation stage offset	0	-0.007540371344731511
[s] Observation start time (MET)	264553401.790798	264553400.7658
Observation start date	2006-05-20T23:03:22	2006-05-20T23:03:20
[s] Observation end time (MET)	264567628.791462	264567627.76646
Observation end date	2006-05-21T03:00:29	2006-05-21T03:00:27
Read mode	TIMED	TIMED

Parameter	Planned	Actual
Obspar format version number	7	7
Obspar file type	PREDICTED	ACTUAL
Obspar update status	NONE	UPDATED
On-chip summing requested	N	N
Subarray requested	NONE	NONE
Alternating exposures requested	N	N
[s] Primary exposure time	3.2	3.2

2.3 Star Slots

2.4 FID Slots

A Summary

A.1 Status

V&V Scientist	Jen Lauer
V&V Date (YYYY-MM-DD)	2012.04.03
V&V Edition	1
V&V Disposition and Status	OK
V&V Charge Time	2.8050119137466

A.2 Comments