

V&V Reference Report

L2 ASCDS Version : 8.4.4

Observation 58917 - L2 Version 3
Chandra X-Ray Center

L2 Processing Date : Apr 17 2012

Contents

1	Front	2
2	OBI	3
2.1	OBI	3
2.1.1	Images	3
2.1.2	Bias	3
2.1.3	Parameters	4
2.1.4	Events	4
2.2	Compared Parameters	5
2.3	Star Slots	6
2.4	FID Slots	6
A	Summary	7
A.1	Status	7
A.2	Comments	7

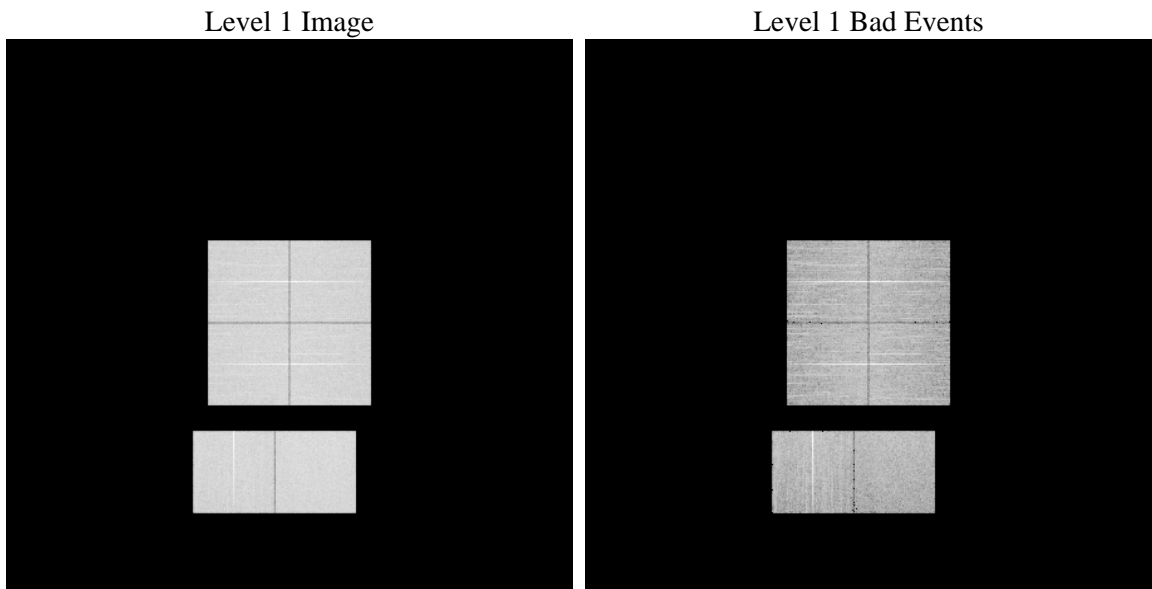
1 Front

seq_num	 	Sequence number
obs_id	58917	Observation id
title	ACIS-012367 diagnostics	Proposal title
observer	CHANDRA engineering request/realtime commanding	Principal investig
object	 	Source name
dtcycle	0	
cycle	P	events from which exps? Prim/Second/Both
ra_targ	0.0	Observer's specified target RA [deg]
dec_targ	0.0	Observer's specified target Dec [deg]
ra_nom	250.04547439348	Nominal RA [deg]
dec_nom	-49.001180823787	Nominal Dec [deg]
roll_nom	320.27566232944	Nominal Roll [deg]
revision	3	Processing version of data
ontime	8271.9999691844	Sum of GTIs [s]
livetime	8167.2549247742	Livetime [s]
ontime0	8271.9999691844	Sum of GTIs [s]
ontime1	8271.9999691844	Sum of GTIs [s]
ontime2	8271.9999691844	Sum of GTIs [s]
ontime3	8271.9999691844	Sum of GTIs [s]
ontime6	8271.997628361	Sum of GTIs [s]
ontime7	8271.9999691844	Sum of GTIs [s]
l2events	898028	Number of level 2 events

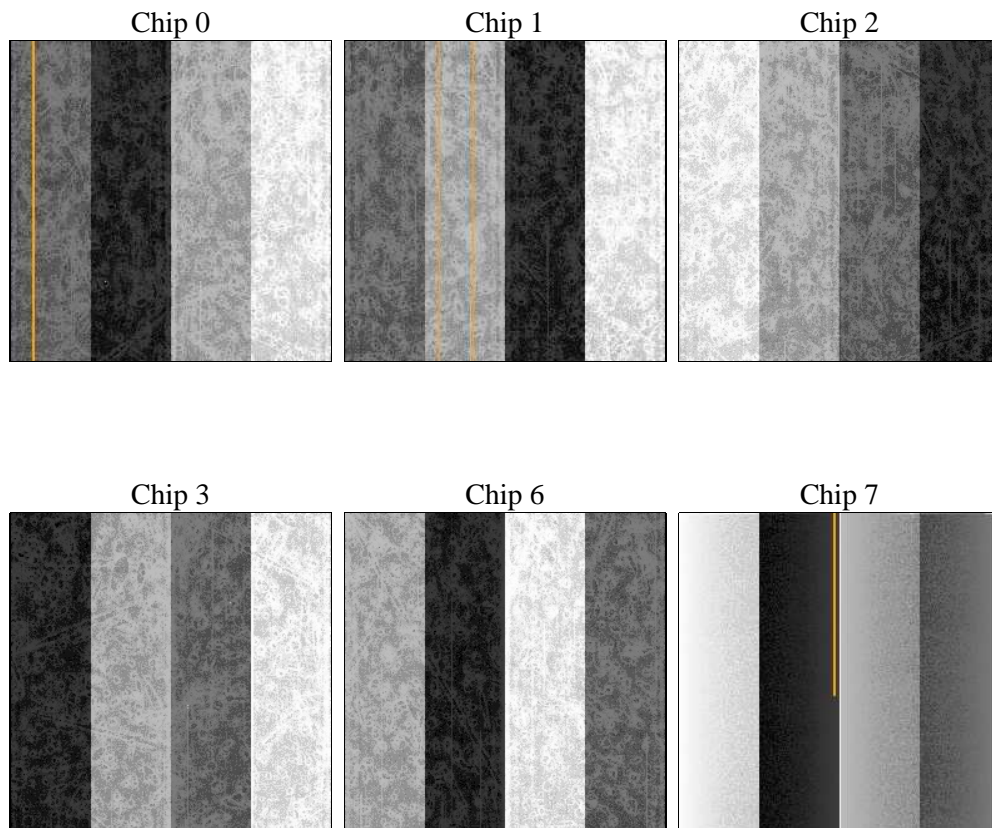
2 OBI

2.1 OBI

2.1.1 Images



2.1.2 Bias



2.1.3 Parameters

obi_num	0	Obi number	sched_exp_time	0.0	[s] Scheduled observation exposure time
ascdsver	8.4.4	Processing system revision	ontime	8271.9999691844	Sum of GTIs [s]
caldsver	4.4.9	 	ontime0	8271.9999691844	Sum of GTIs [s]
date	2012-04-17T22:56:37	Date and time of file creation	ontime1	8271.9999691844	Sum of GTIs [s]
revision	3	Processing version of data	ontime2	8271.9999691844	Sum of GTIs [s]
			ontime3	8271.9999691844	Sum of GTIs [s]
			ontime6	8271.997628361	Sum of GTIs [s]
			ontime7	8271.9999691844	Sum of GTIs [s]
			l1events	1365222	Number of level 1 events

2.1.4 Events

	ccd 0	ccd 1	ccd 2	ccd 3	ccd 6	ccd 7		ccd 0	ccd 1	ccd 2	ccd 3	ccd 6	ccd 7
level 1 events	221235	216989	225482	225443	230862	245211	grade 0 events	82124	81291	84645	85691	84283	39765
rejected events	71212	66217	73908	72578	73816	62202		37%	37%	37%	38%	36%	16%
rejected %	32%	30%	32%	32%	31%	25%	grade 1 events	545	450	594	622	496	162
								0%	0%	0%	0%	0%	0%
							grade 2 events	26125	27558	24932	25622	27687	40189
								11%	12%	11%	11%	11%	16%
							grade 3 events	9782	9781	10084	10121	9646	17704
								4%	4%	4%	4%	4%	7%
							grade 4 events	9688	9424	10234	10061	9858	17202
								4%	4%	4%	4%	4%	7%
							grade 5 events	3840	3890	3712	4192	4245	10167
								1%	1%	1%	1%	1%	4%
							grade 6 events	22354	22769	21727	21439	25648	68230
								10%	10%	9%	9%	11%	27%
							grade 7 events	66777	61826	69554	67695	68999	51792
								30%	28%	30%	30%	29%	21%

2.2 Compared Parameters

Parameter	Planned	Actual
Instrument	ACIS	ACIS
Detector	ACIS-012367	ACIS-012367
Grating	NONE	NONE
Data mode	FAINT	FAINT
Observation mode	SECONDARY	SECONDARY
[deg] Pointing RA	0	250.0454743934833
[deg] Pointing Dec	0	-49.00118082378724
[deg] Pointing Roll	0.0	320.2756623294351
[mm] SIM focus pos	-0.782348	-0.6828225247311905
[mm] SIM defocus	0	0.8505141146731063
[mm] SIM translation stage pos	-233.592463	250.466033080201
[mm] SIM translation stage offset	0	-0.01005468664627074
[s] Observation start time (MET)	267334272.020764	267334270.99575
Observation start date	2006-06-22T03:31:12	2006-06-22T03:31:10
[s] Observation end time (MET)	267358064.321878	267358063.29686
Observation end date	2006-06-22T10:07:44	2006-06-22T10:07:43
Read mode	TIMED	TIMED

Parameter	Planned	Actual
Obspar format version number	7	7
Obspar file type	PREDICTED	ACTUAL
Obspar update status	NONE	UPDATED
On-chip summing requested	N	N
Subarray requested	NONE	NONE
Alternating exposures requested	N	N
[s] Primary exposure time	3.2	3.2

2.3 Star Slots

2.4 FID Slots

A Summary

A.1 Status

V&V Scientist	Beth Sundheim
V&V Date (YYYY-MM-DD)	2012.04.19
V&V Edition	1
V&V Disposition and Status	OK
V&V Charge Time	8.2719999691844

A.2 Comments