

V&V Reference Report

L2 ASCDS Version : 8.4.3

Observation 58910 - L2 Version 2
Chandra X-Ray Center

L2 Processing Date : Apr 4 2012

Contents

1	Front	2
2	OBI	3
2.1	OBI	3
2.1.1	Images	3
2.1.2	Bias	3
2.1.3	Parameters	4
2.1.4	Events	4
2.2	Compared Parameters	5
2.3	Star Slots	6
2.4	FID Slots	6
A	Summary	7
A.1	Status	7
A.2	Comments	7

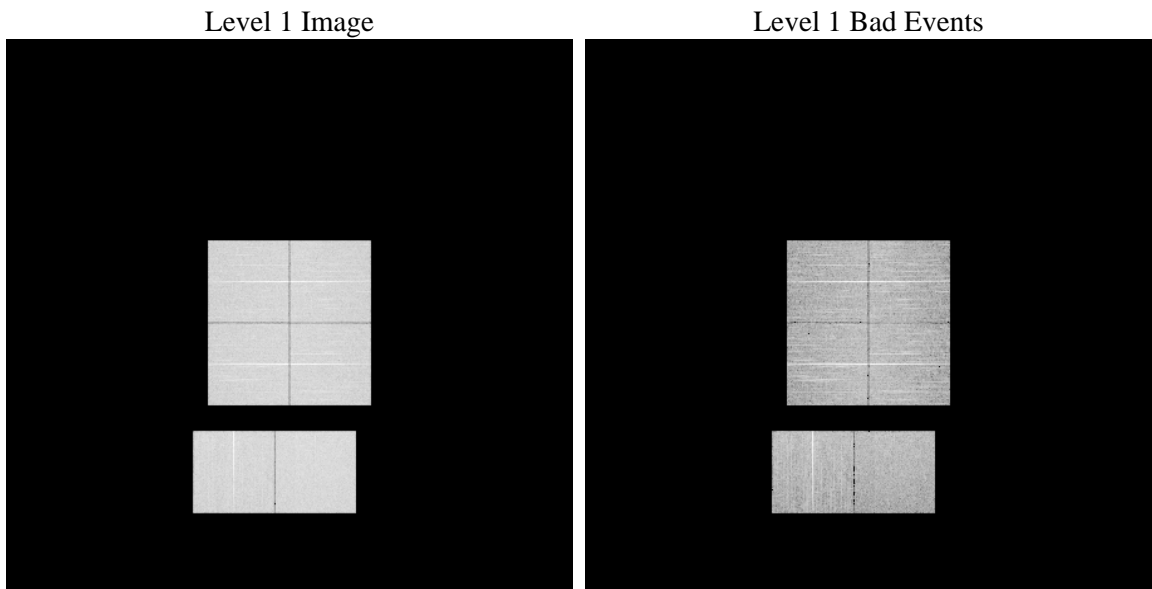
1 Front

seq_num	 	Sequence number
obs_id	58910	Observation id
title	ACIS-012367 diagnostics	Proposal title
observer	CHANDRA engineering request/realtime commanding	Principal investig
object	 	Source name
dtcycle	0	
cycle	P	events from which exps? Prim/Second/Both
ra_targ	0.0	Observer's specified target RA [deg]
dec_targ	0.0	Observer's specified target Dec [deg]
ra_nom	147.99767711322	Nominal RA [deg]
dec_nom	-18.028513991514	Nominal Dec [deg]
roll_nom	232.72329431949	Nominal Roll [deg]
revision	2	Processing version of data
ontime	8268.7999691963	Sum of GTIs [s]
livetime	8164.0954451128	Livetime [s]
ontime0	8268.7999691963	Sum of GTIs [s]
ontime1	8268.7999691963	Sum of GTIs [s]
ontime2	8265.5589790046	Sum of GTIs [s]
ontime3	8268.7999691963	Sum of GTIs [s]
ontime6	8268.7999691963	Sum of GTIs [s]
ontime7	8268.7999691963	Sum of GTIs [s]
l2events	896317	Number of level 2 events

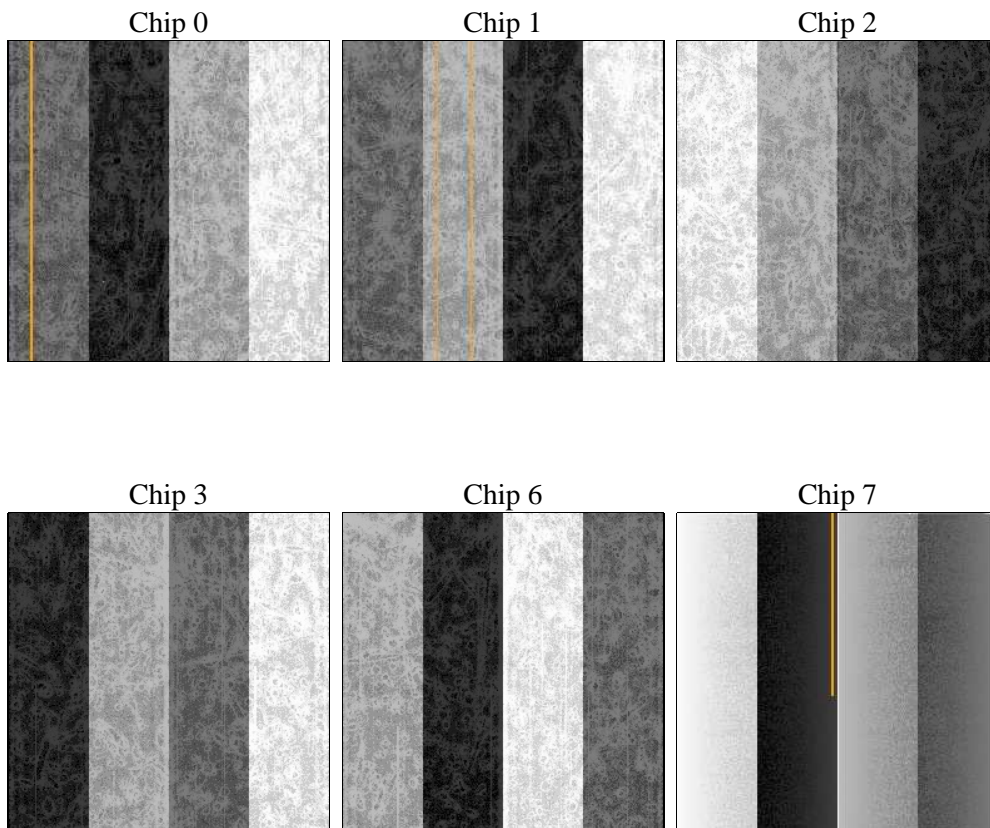
2 OBI

2.1 OBI

2.1.1 Images



2.1.2 Bias



2.1.3 Parameters

obi_num	0	Obi number	sched_exp_time	0.0	[s] Scheduled observation exposure time
ascdsver	8.4.3.1	Processing system revision	ontime	8268.7999691963	Sum of GTIs [s]
caldsver	4.4.9	 	ontime0	8268.7999691963	Sum of GTIs [s]
date	2012-04-04T06:04:29	Date and time of file creation	ontime1	8268.7999691963	Sum of GTIs [s]
revision	2	Processing version of data	ontime2	8265.5589790046	Sum of GTIs [s]
			ontime3	8268.7999691963	Sum of GTIs [s]
			ontime6	8268.7999691963	Sum of GTIs [s]
			ontime7	8268.7999691963	Sum of GTIs [s]
			l1events	1375836	Number of level 1 events

2.1.4 Events

	ccd 0	ccd 1	ccd 2	ccd 3	ccd 6	ccd 7		ccd 0	ccd 1	ccd 2	ccd 3	ccd 6	ccd 7
level 1 events	219702	221279	228447	228179	232403	245826	grade 0 events	81847	81058	84168	84744	84500	39496
rejected events	69288	70642	77275	76287	75403	62431		37%	36%	36%	37%	36%	16%
rejected %	31%	31%	33%	33%	32%	25%	grade 1 events	574	523	620	679	473	164
								0%	0%	0%	0%	0%	0%
							grade 2 events	26276	27379	25503	25494	27326	40368
								11%	12%	11%	11%	11%	16%
							grade 3 events	9883	9772	9894	10113	9747	17569
								4%	4%	4%	4%	4%	7%
							grade 4 events	9854	9556	9981	10188	9782	17242
								4%	4%	4%	4%	4%	7%
							grade 5 events	3845	3971	3692	4269	4341	10380
								1%	1%	1%	1%	1%	4%
							grade 6 events	22554	22872	21626	21353	25645	68720
								10%	10%	9%	9%	11%	27%
							grade 7 events	64869	66148	72963	71339	70589	51887
								29%	29%	31%	31%	30%	21%

2.2 Compared Parameters

Parameter	Planned	Actual
Instrument	ACIS	ACIS
Detector	ACIS-012367	ACIS-012367
Grating	NONE	NONE
Data mode	FAINT	FAINT
Observation mode	SECONDARY	SECONDARY
[deg] Pointing RA	0	147.9976771132172
[deg] Pointing Dec	0	-18.02851399151437
[deg] Pointing Roll	0.0	232.7232943194862
[mm] SIM focus pos	-0.782348	-0.7809083437167272
[mm] SIM defocus	0	0.7524282956875696
[mm] SIM translation stage pos	-233.592463	250.466033080201
[mm] SIM translation stage offset	0	-0.01005468664627074
[s] Observation start time (MET)	267788506.941993	267788505.91701
Observation start date	2006-06-27T09:41:47	2006-06-27T09:41:45
[s] Observation end time (MET)	267812500.143116	267812499.11813
Observation end date	2006-06-27T16:21:40	2006-06-27T16:21:39
Read mode	TIMED	TIMED

Parameter	Planned	Actual
Obspar format version number	7	7
Obspar file type	PREDICTED	ACTUAL
Obspar update status	NONE	UPDATED
On-chip summing requested	N	N
Subarray requested	NONE	NONE
Alternating exposures requested	N	N
[s] Primary exposure time	3.2	3.2

2.3 Star Slots

2.4 FID Slots

A Summary

A.1 Status

V&V Scientist	Beth Sundheim
V&V Date (YYYY-MM-DD)	2012.04.05
V&V Edition	1
V&V Disposition and Status	OK
V&V Charge Time	8.2687999691963

A.2 Comments