

V&V Reference Report

L2 ASCDS Version : 8.4.3.1

Observation 58832 - L2 Version 2
Chandra X-Ray Center

L2 Processing Date : Apr 7 2012

Contents

1	Front	2
2	OBI	3
2.1	OBI	3
2.1.1	Images	3
2.1.2	Bias	3
2.1.3	Parameters	4
2.1.4	Events	4
2.2	Compared Parameters	5
2.3	Star Slots	6
2.4	FID Slots	6
A	Summary	7
A.1	Status	7
A.2	Comments	7

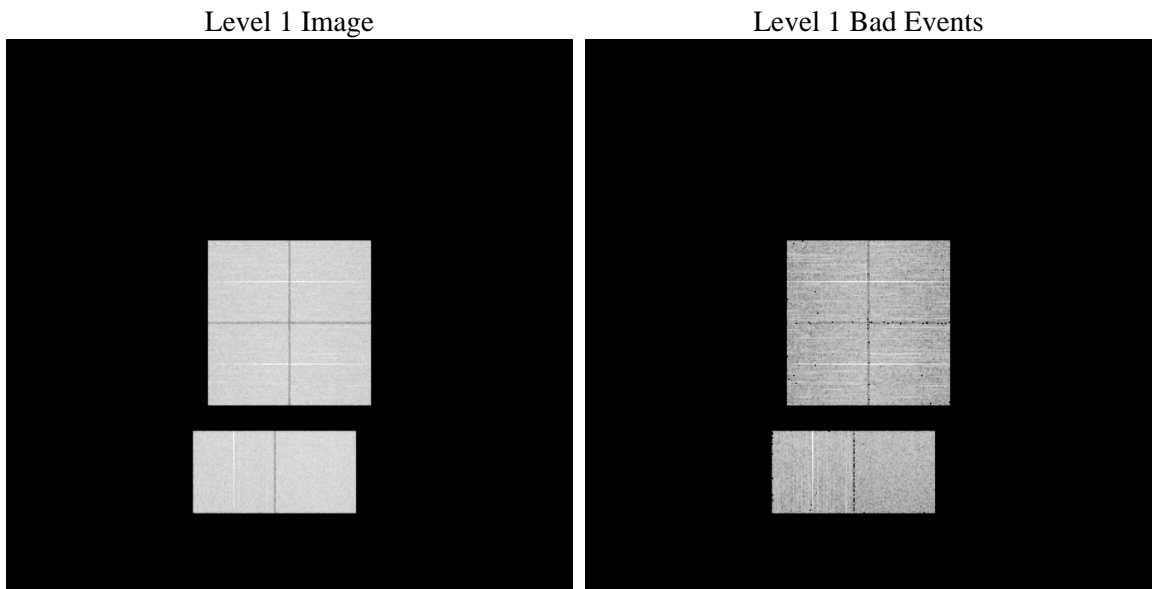
1 Front

seq_num	 	Sequence number
obs_id	58832	Observation id
title	ACIS-012367 diagnostics	Proposal title
observer	CHANDRA engineering request/realtime commanding	Principal investig
object	 	Source name
dtcycle	0	
cycle	P	events from which exps? Prim/Second/Both
ra_targ	0.0	Observer's specified target RA [deg]
dec_targ	0.0	Observer's specified target Dec [deg]
ra_nom	359.97385394285	Nominal RA [deg]
dec_nom	0.015213577522835	Nominal Dec [deg]
roll_nom	113.48517656603	Nominal Roll [deg]
revision	2	Processing version of data
ontime	5807.5018649697	Sum of GTIs [s]
livetime	5733.9637794977	Livetime [s]
ontime0	5807.4608249664	Sum of GTIs [s]
ontime1	5807.4197849631	Sum of GTIs [s]
ontime2	5807.3787449598	Sum of GTIs [s]
ontime3	5807.542904973	Sum of GTIs [s]
ontime6	5807.3377049565	Sum of GTIs [s]
ontime7	5807.5018649697	Sum of GTIs [s]
l2events	617178	Number of level 2 events

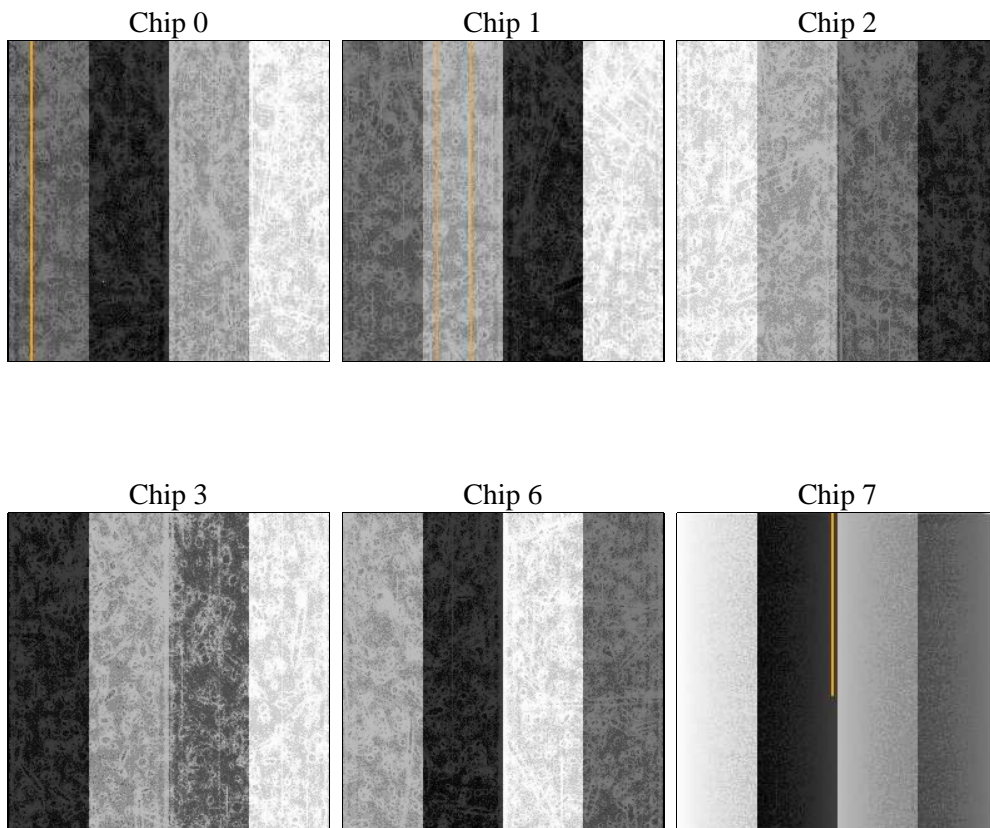
2 OBI

2.1 OBI

2.1.1 Images



2.1.2 Bias



2.1.3 Parameters

obi_num	0	Obi number	sched_exp_time	0.0	[s] Scheduled observation exposure time
ascdsver	8.4.3.1	Processing system revision	ontime	5807.5018649697	Sum of GTIs [s]
caldsver	4.4.9	 	ontime0	5807.4608249664	Sum of GTIs [s]
date	2012-04-07T09:35:00	Date and time of file creation	ontime1	5807.4197849631	Sum of GTIs [s]
revision	2	Processing version of data	ontime2	5807.3787449598	Sum of GTIs [s]
			ontime3	5807.542904973	Sum of GTIs [s]
			ontime6	5807.3377049565	Sum of GTIs [s]
			ontime7	5807.5018649697	Sum of GTIs [s]
			l1events	939130	Number of level 1 events

2.1.4 Events

	ccd 0	ccd 1	ccd 2	ccd 3	ccd 6	ccd 7		ccd 0	ccd 1	ccd 2	ccd 3	ccd 6	ccd 7
level 1 events	151453	150521	153195	155015	159913	169033	grade 0 events	56452	56070	57763	57918	58491	27990
rejected events	48144	46628	49446	50722	51954	42278		37%	37%	37%	37%	36%	16%
rejected %	31%	30%	32%	32%	32%	25%	grade 1 events	358	322	421	409	351	116
								0%	0%	0%	0%	0%	0%
							grade 2 events	18175	18917	17471	17762	18770	27769
								12%	12%	11%	11%	11%	16%
							grade 3 events	6850	6645	7017	7000	6817	12433
								4%	4%	4%	4%	4%	7%
							grade 4 events	6730	6764	6927	7067	6763	12449
								4%	4%	4%	4%	4%	7%
							grade 5 events	2643	2703	2538	3007	2962	7378
								1%	1%	1%	1%	1%	4%
							grade 6 events	15102	15497	14571	14546	17118	46114
								9%	10%	9%	9%	10%	27%
							grade 7 events	45143	43603	46487	47306	48641	34784
								29%	28%	30%	30%	30%	20%

2.2 Compared Parameters

Parameter	Planned	Actual
Instrument	ACIS	ACIS
Detector	ACIS-012367	ACIS-012367
Grating	NONE	NONE
Data mode	FAINT	FAINT
Observation mode	SECONDARY	SECONDARY
[deg] Pointing RA	0	359.9738539428481
[deg] Pointing Dec	0	0.01521357752283544
[deg] Pointing Roll	0.0	113.4851765660253
[mm] SIM focus pos	-0.782348	-0.6828225247311905
[mm] SIM defocus	0	0.8505141146731063
[mm] SIM translation stage pos	-233.592463	250.4635187648994
[mm] SIM translation stage offset	0	-0.007540371344731511
[s] Observation start time (MET)	271633271.872155	271633270.84717
Observation start date	2006-08-10T21:41:12	2006-08-10T21:41:10
[s] Observation end time (MET)	271672886.074012	271672885.04902
Observation end date	2006-08-11T08:41:26	2006-08-11T08:41:25
Read mode	TIMED	TIMED

Parameter	Planned	Actual
Obspar format version number	7	7
Obspar file type	PREDICTED	ACTUAL
Obspar update status	NONE	UPDATED
On-chip summing requested	N	N
Subarray requested	NONE	NONE
Alternating exposures requested	N	N
[s] Primary exposure time	3.2	3.2

2.3 Star Slots

2.4 FID Slots

A Summary

A.1 Status

V&V Scientist	Jen Lauer
V&V Date (YYYY-MM-DD)	2012.04.08
V&V Edition	1
V&V Disposition and Status	OK
V&V Charge Time	5.8075018649697

A.2 Comments