

V&V Reference Report

L2 ASCDS Version : 8.4.3.1

Observation 58814 - L2 Version 2
Chandra X-Ray Center

L2 Processing Date : Apr 7 2012

Contents

1	Front	2
2	OBI	3
2.1	OBI	3
2.1.1	Images	3
2.1.2	Bias	3
2.1.3	Parameters	4
2.1.4	Events	4
2.2	Compared Parameters	5
2.3	Star Slots	6
2.4	FID Slots	6
A	Summary	7
A.1	Status	7
A.2	Comments	7

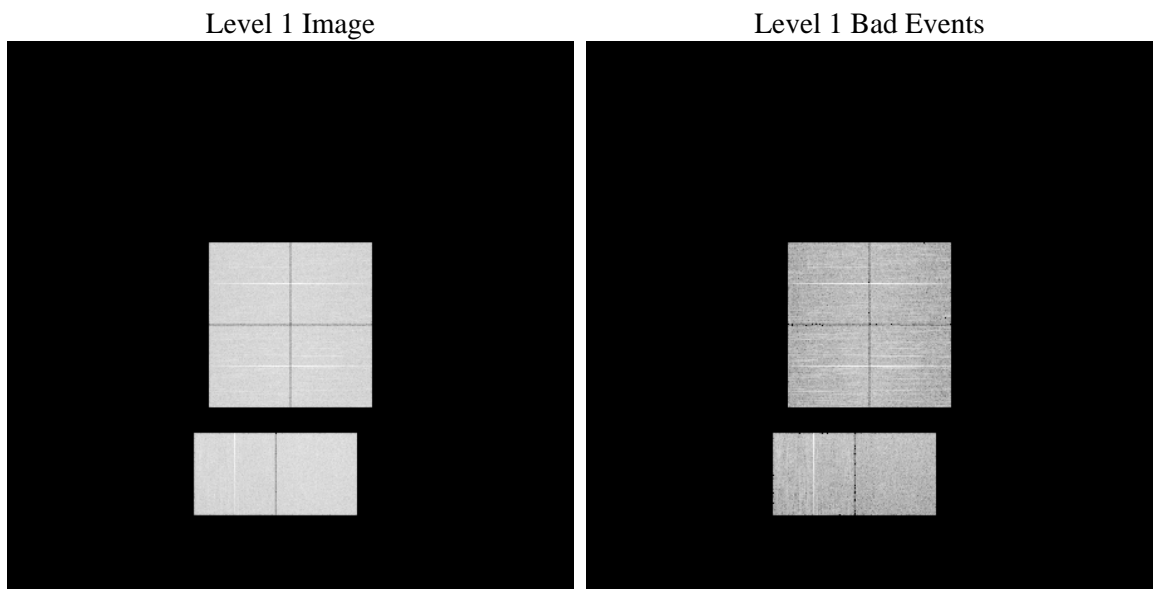
1 Front

seq_num	 	Sequence number
obs_id	58814	Observation id
title	ACIS-012367 diagnostics	Proposal title
observer	CHANDRA engineering request/realtime commanding	Principal investig
object	 	Source name
dtcycle	0	
cycle	P	events from which exps? Prim/Second/Both
ra_targ	0.0	Observer's specified target RA [deg]
dec_targ	0.0	Observer's specified target Dec [deg]
ra_nom	302.81558662846	Nominal RA [deg]
dec_nom	-11.724216480537	Nominal Dec [deg]
roll_nom	269.35824227152	Nominal Roll [deg]
revision	2	Processing version of data
ontime	7791.9999710321	Sum of GTIs [s]
livetime	7693.3329756198	Livetime [s]
ontime0	7791.9999710321	Sum of GTIs [s]
ontime1	7791.9999710321	Sum of GTIs [s]
ontime2	7791.9999710321	Sum of GTIs [s]
ontime3	7791.9999710321	Sum of GTIs [s]
ontime6	7791.9999710321	Sum of GTIs [s]
ontime7	7791.9999710321	Sum of GTIs [s]
l2events	822198	Number of level 2 events

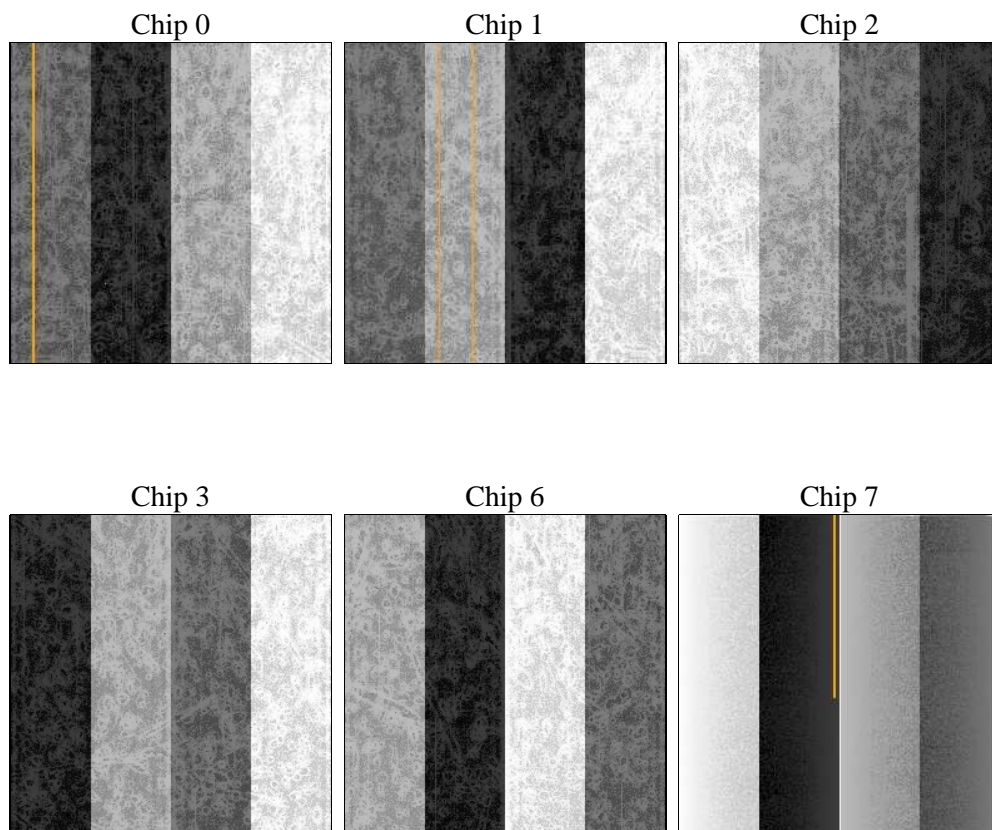
2 OBI

2.1 OBI

2.1.1 Images



2.1.2 Bias



2.1.3 Parameters

obi_num	0	Obi number	sched_exp_time	0.0	[s] Scheduled observation exposure time
ascdsver	8.4.3.1	Processing system revision	ontime	7791.9999710321	Sum of GTIs [s]
caldsver	4.4.9	 	ontime0	7791.9999710321	Sum of GTIs [s]
date	2012-04-08T02:08:17	Date and time of file creation	ontime1	7791.9999710321	Sum of GTIs [s]
revision	2	Processing version of data	ontime2	7791.9999710321	Sum of GTIs [s]
			ontime3	7791.9999710321	Sum of GTIs [s]
			ontime6	7791.9999710321	Sum of GTIs [s]
			ontime7	7791.9999710321	Sum of GTIs [s]
			l1events	1248050	Number of level 1 events

2.1.4 Events

	ccd 0	ccd 1	ccd 2	ccd 3	ccd 6	ccd 7		ccd 0	ccd 1	ccd 2	ccd 3	ccd 6	ccd 7
level 1 events	200323	200305	206101	206436	209908	224977	grade 0 events	75249	75030	76824	77565	77302	36735
rejected events	62670	61412	68111	66805	66289	56893		37%	37%	37%	37%	36%	16%
rejected %	31%	30%	33%	32%	31%	25%	grade 1 events	513	442	525	573	462	175
								0%	0%	0%	0%	0%	0%
							grade 2 events	24174	24945	23610	23957	24868	36987
								12%	12%	11%	11%	11%	16%
							grade 3 events	8947	8990	9042	9311	9014	16323
								4%	4%	4%	4%	4%	7%
							grade 4 events	9119	9203	9248	9368	9132	16195
								4%	4%	4%	4%	4%	7%
							grade 5 events	3491	3635	3438	4000	3850	9801
								1%	1%	1%	1%	1%	4%
							grade 6 events	20164	20725	19266	19430	23303	61844
								10%	10%	9%	9%	11%	27%
							grade 7 events	58666	57335	64148	62232	61977	46917
								29%	28%	31%	30%	29%	20%

2.2 Compared Parameters

Parameter	Planned	Actual
Instrument	ACIS	ACIS
Detector	ACIS-012367	ACIS-012367
Grating	NONE	NONE
Data mode	FAINT	FAINT
Observation mode	SECONDARY	SECONDARY
[deg] Pointing RA	0	302.8155866284621
[deg] Pointing Dec	0	-11.7242164805373
[deg] Pointing Roll	0.0	269.3582422715153
[mm] SIM focus pos	-0.782348	-0.7809083437167272
[mm] SIM defocus	0	0.7524282956875696
[mm] SIM translation stage pos	-233.592463	250.466033080201
[mm] SIM translation stage offset	0	-0.01005468664627074
[s] Observation start time (MET)	273001530.086417	273001529.06141
Observation start date	2006-08-26T17:45:30	2006-08-26T17:45:29
[s] Observation end time (MET)	273020098.98729	273020097.96229
Observation end date	2006-08-26T22:54:59	2006-08-26T22:54:57
Read mode	TIMED	TIMED

Parameter	Planned	Actual
Obspar format version number	7	7
Obspar file type	PREDICTED	ACTUAL
Obspar update status	NONE	UPDATED
On-chip summing requested	N	N
Subarray requested	NONE	NONE
Alternating exposures requested	N	N
[s] Primary exposure time	3.2	3.2

2.3 Star Slots

2.4 FID Slots

A Summary

A.1 Status

V&V Scientist	Jen Lauer
V&V Date (YYYY-MM-DD)	2012.04.08
V&V Edition	1
V&V Disposition and Status	OK
V&V Charge Time	7.7919999710321

A.2 Comments