

V&V Reference Report

L2 ASCDS Version : 8.4.3.1

Observation 58808 - L2 Version 2
Chandra X-Ray Center

L2 Processing Date : Apr 8 2012

Contents

1	Front	2
2	OBI	3
2.1	OBI	3
2.1.1	Images	3
2.1.2	Bias	3
2.1.3	Parameters	4
2.1.4	Events	4
2.2	Compared Parameters	5
2.3	Star Slots	6
2.4	FID Slots	6
A	Summary	7
A.1	Status	7
A.2	Comments	7

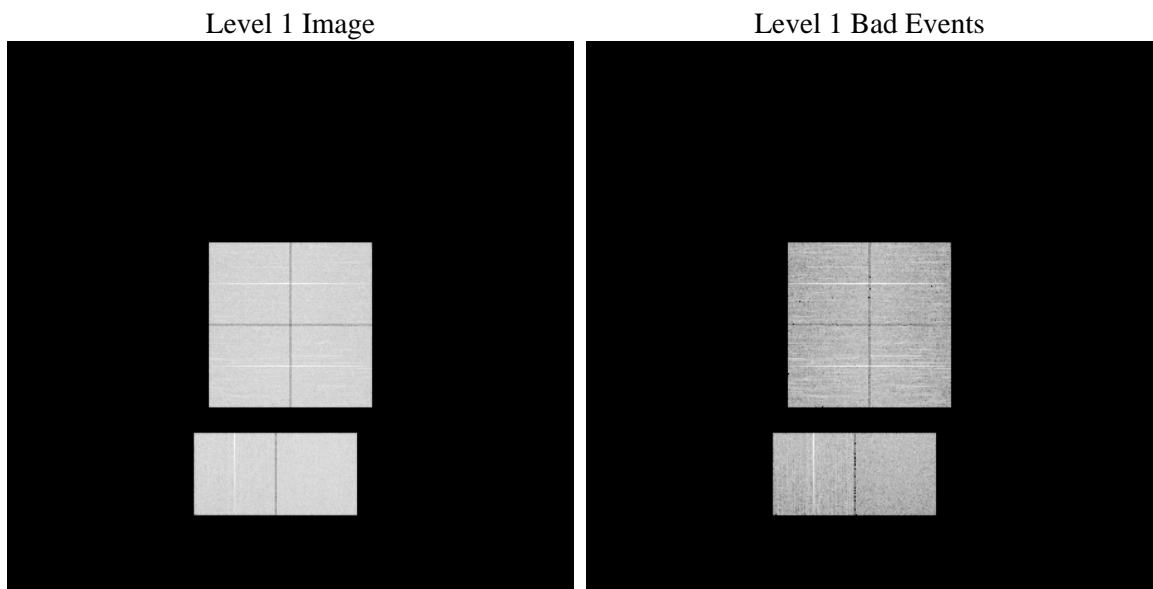
1 Front

seq_num	 	Sequence number
obs_id	58808	Observation id
title	ACIS-012367 diagnostics	Proposal title
observer	CHANDRA engineering request/realtime commanding	Principal investig
object	 	Source name
dtcycle	0	
cycle	P	events from which exps? Prim/Second/Both
ra_targ	0.0	Observer's specified target RA [deg]
dec_targ	0.0	Observer's specified target Dec [deg]
ra_nom	328.48156604594	Nominal RA [deg]
dec_nom	18.877302539006	Nominal Dec [deg]
roll_nom	199.5580552499	Nominal Roll [deg]
revision	2	Processing version of data
ontime	8271.6500002742	Sum of GTIs [s]
livetime	8166.909387381	Livetime [s]
ontime0	8271.6089602709	Sum of GTIs [s]
ontime1	8271.5679202676	Sum of GTIs [s]
ontime2	8271.5268802643	Sum of GTIs [s]
ontime3	8268.4500599504	Sum of GTIs [s]
ontime6	8271.485840261	Sum of GTIs [s]
ontime7	8271.6500002742	Sum of GTIs [s]
l2events	870439	Number of level 2 events

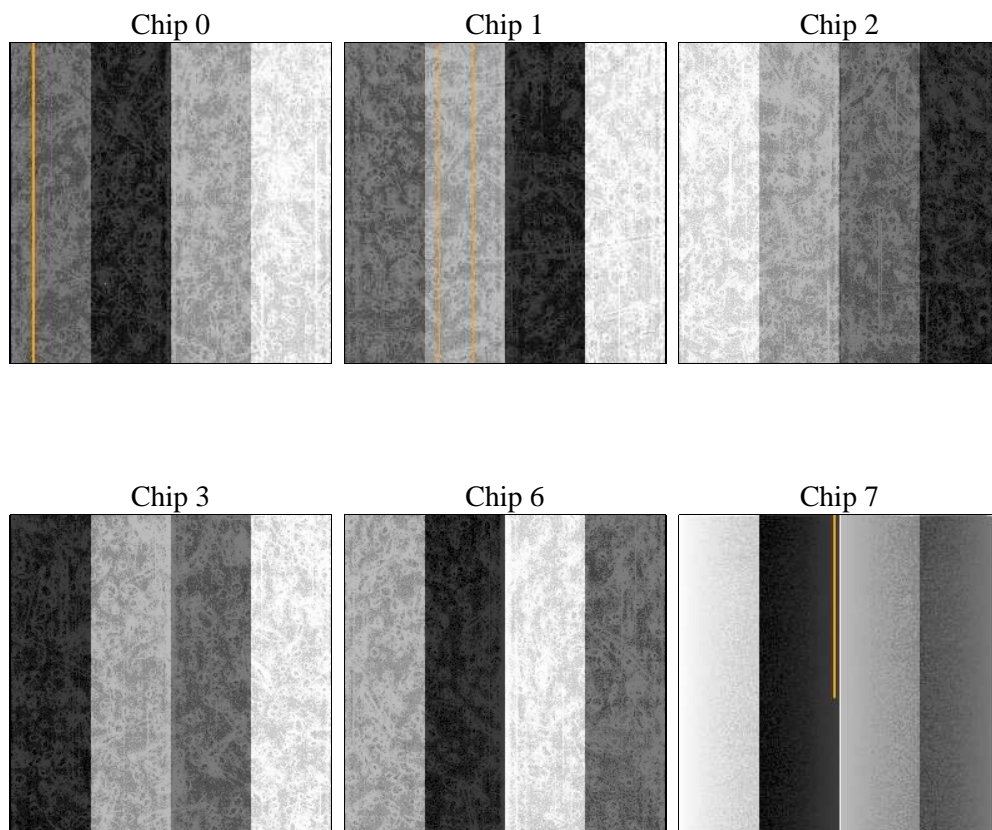
2 OBI

2.1 OBI

2.1.1 Images



2.1.2 Bias



2.1.3 Parameters

obi_num	0	Obi number	sched_exp_time	0.0	[s] Scheduled observation exposure time
ascdsver	8.4.3.1	Processing system revision	ontime	8271.6500002742	Sum of GTIs [s]
caldsver	4.4.9	 	ontime0	8271.6089602709	Sum of GTIs [s]
date	2012-04-08T03:16:41	Date and time of file creation	ontime1	8271.5679202676	Sum of GTIs [s]
revision	2	Processing version of data	ontime2	8271.5268802643	Sum of GTIs [s]
			ontime3	8268.4500599504	Sum of GTIs [s]
			ontime6	8271.485840261	Sum of GTIs [s]
			ontime7	8271.6500002742	Sum of GTIs [s]
			l1events	1321920	Number of level 1 events

2.1.4 Events

	ccd 0	ccd 1	ccd 2	ccd 3	ccd 6	ccd 7		ccd 0	ccd 1	ccd 2	ccd 3	ccd 6	ccd 7
level 1 events	210928	210956	218907	219675	223838	237616	grade 0 events	79448	79099	81466	82309	81057	38723
rejected events	65286	63510	72402	71522	72015	60264		37%	37%	37%	37%	36%	16%
rejected %	30%	30%	33%	32%	32%	25%	grade 1 events	525	443	585	588	481	159
								0%	0%	0%	0%	0%	0%
							grade 2 events	25476	26672	24284	25142	26362	38897
								12%	12%	11%	11%	11%	16%
							grade 3 events	9621	9597	9878	9914	9612	17013
								4%	4%	4%	4%	4%	7%
							grade 4 events	9535	9588	9774	9871	9651	16993
								4%	4%	4%	4%	4%	7%
							grade 5 events	3615	3796	3547	4036	4026	10025
								1%	1%	1%	1%	1%	4%
							grade 6 events	21606	22540	21163	20976	25206	65802
								10%	10%	9%	9%	11%	27%
							grade 7 events	61102	59221	68210	66839	67443	50004
								28%	28%	31%	30%	30%	21%

2.2 Compared Parameters

Parameter	Planned	Actual
Instrument	ACIS	ACIS
Detector	ACIS-012367	ACIS-012367
Grating	NONE	NONE
Data mode	FAINT	FAINT
Observation mode	SECONDARY	SECONDARY
[deg] Pointing RA	0	328.4815660459371
[deg] Pointing Dec	0	18.8773025390059
[deg] Pointing Roll	0.0	199.558055249903
[mm] SIM focus pos	-0.782348	-0.6828225247311905
[mm] SIM defocus	0	0.8505141146731063
[mm] SIM translation stage pos	-233.592463	250.466033080201
[mm] SIM translation stage offset	0	-0.01005468664627074
[s] Observation start time (MET)	273273915.64923	273273914.62422
Observation start date	2006-08-29T21:25:16	2006-08-29T21:25:14
[s] Observation end time (MET)	273298021.600365	273298020.57535
Observation end date	2006-08-30T04:07:02	2006-08-30T04:07:00
Read mode	TIMED	TIMED

Parameter	Planned	Actual
Obspar format version number	7	7
Obspar file type	PREDICTED	ACTUAL
Obspar update status	NONE	UPDATED
On-chip summing requested	N	N
Subarray requested	NONE	NONE
Alternating exposures requested	N	N
[s] Primary exposure time	3.2	3.2

2.3 Star Slots

2.4 FID Slots

A Summary

A.1 Status

V&V Scientist	Jen Lauer
V&V Date (YYYY-MM-DD)	2012.04.08
V&V Edition	1
V&V Disposition and Status	OK
V&V Charge Time	8.2716500002742

A.2 Comments