

V&V Reference Report

L2 ASCDS Version : 8.4.3.1

Observation 58796 - L2 Version 2
Chandra X-Ray Center

L2 Processing Date : Apr 8 2012

Contents

1	Front	2
2	OBI	3
2.1	OBI	3
2.1.1	Images	3
2.1.2	Bias	3
2.1.3	Parameters	4
2.1.4	Events	4
2.2	Compared Parameters	5
2.3	Star Slots	6
2.4	FID Slots	6
A	Summary	7
A.1	Status	7
A.2	Comments	7

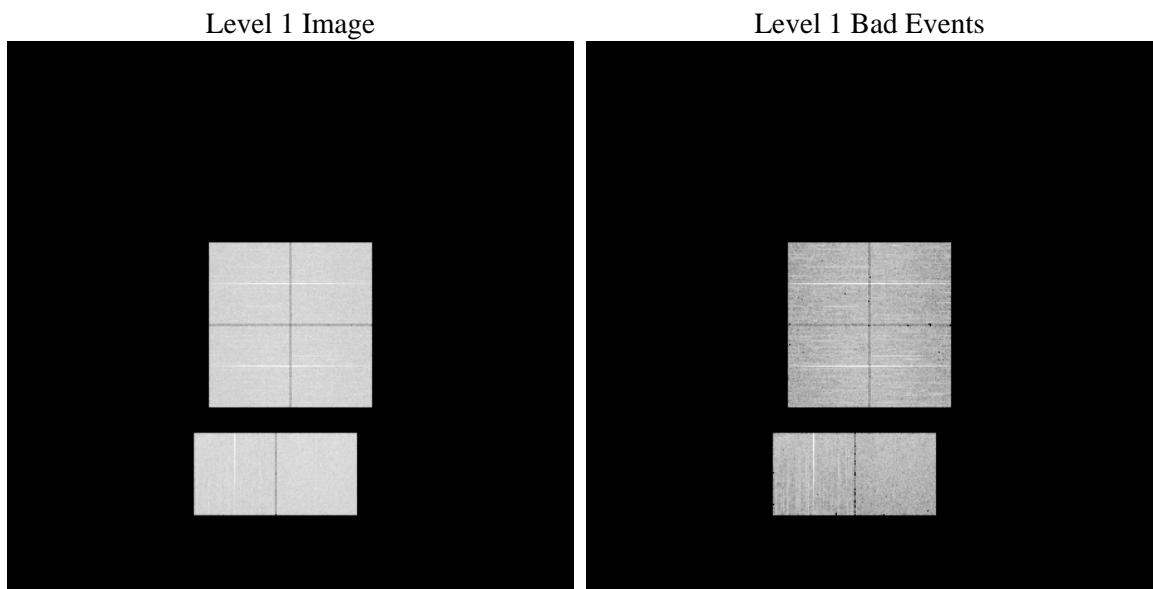
1 Front

seq_num	 	Sequence number
obs_id	58796	Observation id
title	ACIS-012367 diagnostics	Proposal title
observer	CHANDRA engineering request/realtime commanding	Principal investig
object	 	Source name
dtcycle	0	
cycle	P	events from which exps? Prim/Second/Both
ra_targ	0.0	Observer's specified target RA [deg]
dec_targ	0.0	Observer's specified target Dec [deg]
ra_nom	342.97561390011	Nominal RA [deg]
dec_nom	23.979188306317	Nominal Dec [deg]
roll_nom	189.43079510267	Nominal Roll [deg]
revision	2	Processing version of data
ontime	8275.1999692321	Sum of GTIs [s]
livetime	8170.4144044945	Livetime [s]
ontime0	8275.1999692321	Sum of GTIs [s]
ontime1	8275.1999692321	Sum of GTIs [s]
ontime2	8275.1999692321	Sum of GTIs [s]
ontime3	8275.1999692321	Sum of GTIs [s]
ontime6	8275.1999692321	Sum of GTIs [s]
ontime7	8275.1999692321	Sum of GTIs [s]
l2events	858127	Number of level 2 events

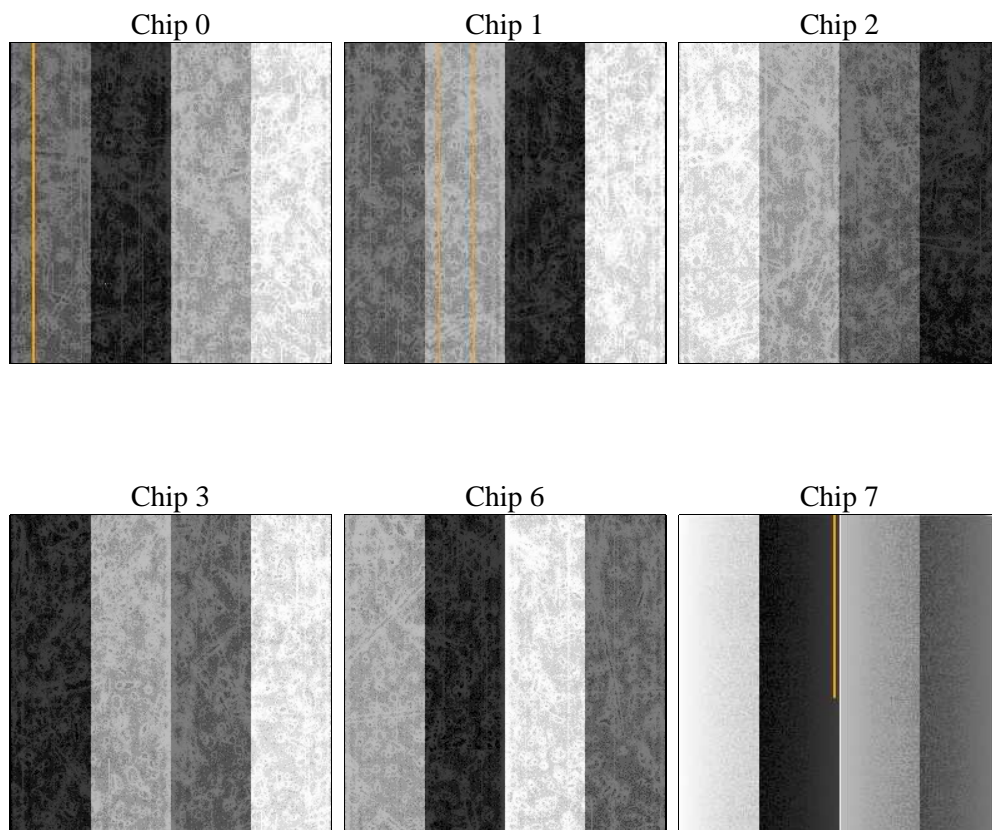
2 OBI

2.1 OBI

2.1.1 Images



2.1.2 Bias



2.1.3 Parameters

obi_num	0	Obi number	sched_exp_time	0.0	[s] Scheduled observation exposure time
ascdsver	8.4.3.1	Processing system revision	ontime	8275.1999692321	Sum of GTIs [s]
caldsver	4.4.9	 	ontime0	8275.1999692321	Sum of GTIs [s]
date	2012-04-08T21:48:49	Date and time of file creation	ontime1	8275.1999692321	Sum of GTIs [s]
revision	2	Processing version of data	ontime2	8275.1999692321	Sum of GTIs [s]
			ontime3	8275.1999692321	Sum of GTIs [s]
			ontime6	8275.1999692321	Sum of GTIs [s]
			ontime7	8275.1999692321	Sum of GTIs [s]
			l1events	1308654	Number of level 1 events

2.1.4 Events

	ccd 0	ccd 1	ccd 2	ccd 3	ccd 6	ccd 7		ccd 0	ccd 1	ccd 2	ccd 3	ccd 6	ccd 7
level 1 events	210177	208792	215044	216038	222032	236571	grade 0 events	78453	77963	80342	81188	81002	38393
rejected events	66595	64223	70770	70724	71841	60633		37%	37%	37%	37%	36%	16%
rejected %	31%	30%	32%	32%	32%	25%	grade 1 events	531	453	652	576	454	146
								0%	0%	0%	0%	0%	0%
							grade 2 events	25176	26255	24252	24539	25902	38204
								11%	12%	11%	11%	11%	16%
							grade 3 events	9467	9139	9476	9709	9427	17035
								4%	4%	4%	4%	4%	7%
							grade 4 events	9328	9387	9587	9574	9450	17030
								4%	4%	4%	4%	4%	7%
							grade 5 events	3780	3929	3544	4192	4087	10076
								1%	1%	1%	1%	1%	4%
							grade 6 events	21231	21884	20681	20304	24463	65347
								10%	10%	9%	9%	11%	27%
							grade 7 events	62211	59782	66510	65956	67247	50340
								29%	28%	30%	30%	30%	21%

2.2 Compared Parameters

Parameter	Planned	Actual
Instrument	ACIS	ACIS
Detector	ACIS-012367	ACIS-012367
Grating	NONE	NONE
Data mode	FAINT	FAINT
Observation mode	SECONDARY	SECONDARY
[deg] Pointing RA	0	342.9756139001084
[deg] Pointing Dec	0	23.97918830631698
[deg] Pointing Roll	0.0	189.4307951026743
[mm] SIM focus pos	-0.782348	-1.428180813131781
[mm] SIM defocus	0	0.1051558262725154
[mm] SIM translation stage pos	-233.592463	250.466033080201
[mm] SIM translation stage offset	0	-0.01005468664627074
[s] Observation start time (MET)	274184759.392012	274184758.36702
Observation start date	2006-09-09T10:25:59	2006-09-09T10:25:58
[s] Observation end time (MET)	274207666.093088	274207665.0681
Observation end date	2006-09-09T16:47:46	2006-09-09T16:47:45
Read mode	TIMED	TIMED

Parameter	Planned	Actual
Obspar format version number	7	7
Obspar file type	PREDICTED	ACTUAL
Obspar update status	NONE	UPDATED
On-chip summing requested	N	N
Subarray requested	NONE	NONE
Alternating exposures requested	N	N
[s] Primary exposure time	3.2	3.2

2.3 Star Slots

2.4 FID Slots

A Summary

A.1 Status

V&V Scientist	Beth Sundheim
V&V Date (YYYY-MM-DD)	2012.04.09
V&V Edition	1
V&V Disposition and Status	OK
V&V Charge Time	8.2751999692321

A.2 Comments