

V&V Reference Report

L2 ASCDS Version : 8.4.3.1

Observation 58773 - L2 Version 2
Chandra X-Ray Center

L2 Processing Date : Apr 10 2012

Contents

1	Front	2
2	OBI	3
2.1	OBI	3
2.1.1	Images	3
2.1.2	Bias	3
2.1.3	Parameters	4
2.1.4	Events	4
2.2	Compared Parameters	5
2.3	Star Slots	6
2.4	FID Slots	6
A	Summary	7
A.1	Status	7
A.2	Comments	7

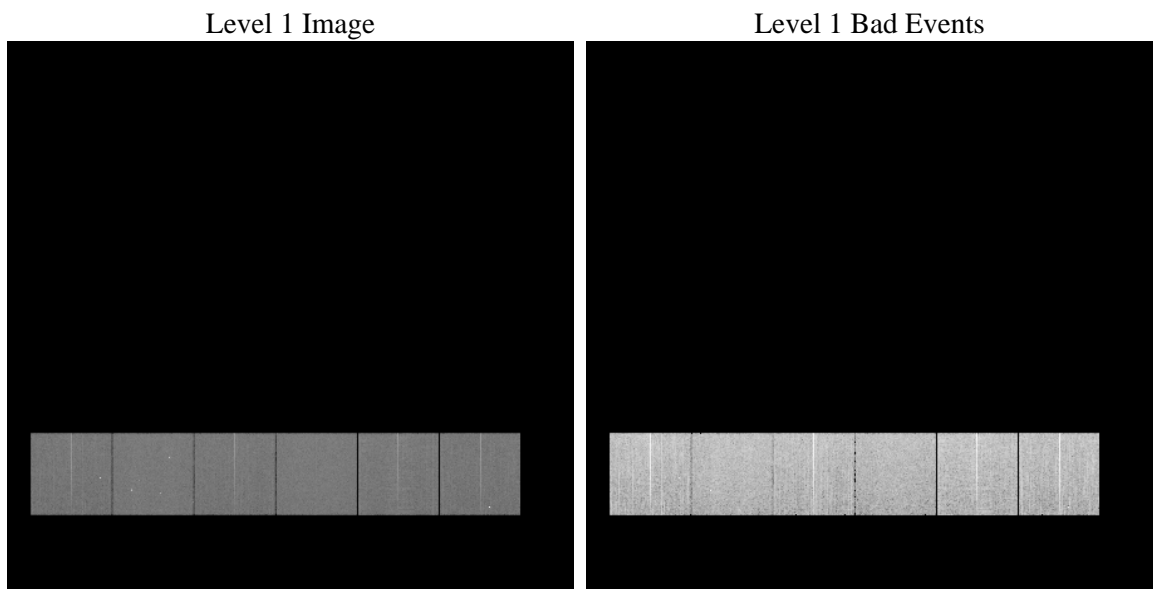
1 Front

seq_num	 	Sequence number
obs_id	58773	Observation id
title	ACIS-456789 diagnostics	Proposal title
observer	CHANDRA engineering request/realtime commanding	Principal investig
object	 	Source name
dtcycle	0	
cycle	P	events from which exps? Prim/Second/Both
ra_targ	0.0	Observer's specified target RA [deg]
dec_targ	0.0	Observer's specified target Dec [deg]
ra_nom	5.9699483174844	Nominal RA [deg]
dec_nom	28.988651726295	Nominal Dec [deg]
roll_nom	170.45825156859	Nominal Roll [deg]
revision	2	Processing version of data
ontime	7791.9999710321	Sum of GTIs [s]
livetime	7693.3329756198	Livetime [s]
ontime4	7791.9999710321	Sum of GTIs [s]
ontime5	7791.9999710321	Sum of GTIs [s]
ontime6	7791.9999710321	Sum of GTIs [s]
ontime7	7791.9999710321	Sum of GTIs [s]
ontime8	7791.9999710321	Sum of GTIs [s]
ontime9	7791.9999710321	Sum of GTIs [s]
l2events	822254	Number of level 2 events

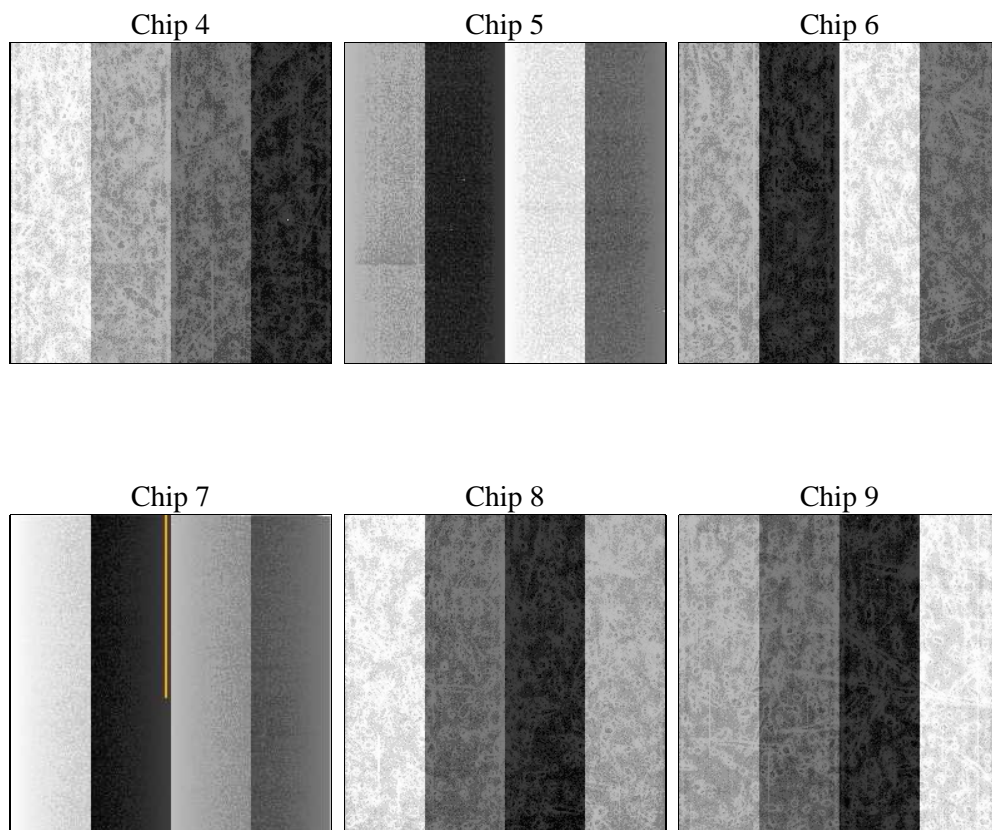
2 OBI

2.1 OBI

2.1.1 Images



2.1.2 Bias



2.1.3 Parameters

obi_num	0	Obi number	sched_exp_time	0.0	[s] Scheduled observation exposure time
ascdsver	8.4.3.1	Processing system revision	ontime	7791.9999710321	Sum of GTIs [s]
caldsver	4.4.9	 	ontime4	7791.9999710321	Sum of GTIs [s]
date	2012-04-10T09:47:50	Date and time of file creation	ontime5	7791.9999710321	Sum of GTIs [s]
revision	2	Processing version of data	ontime6	7791.9999710321	Sum of GTIs [s]
			ontime7	7791.9999710321	Sum of GTIs [s]
			ontime8	7791.9999710321	Sum of GTIs [s]
			ontime9	7791.9999710321	Sum of GTIs [s]
			l1events	1287109	Number of level 1 events

2.1.4 Events

	ccd 4	ccd 5	ccd 6	ccd 7	ccd 8	ccd 9		ccd 4	ccd 5	ccd 6	ccd 7	ccd 8	ccd 9
level 1 events	203759	218284	208778	222224	222308	211756	grade 0 events	77842	29457	76244	36784	78932	80065
rejected events	69751	62636	67211	56539	72502	69274		38%	13%	36%	16%	35%	37%
rejected %	34%	28%	32%	25%	32%	32%	grade 1 events	674	216	439	149	524	537
								0%	0%	0%	0%	0%	0%
							grade 2 events	21106	55928	24683	36268	26945	23734
								10%	25%	11%	16%	12%	11%
							grade 3 events	9149	8361	9061	16481	10160	8946
								4%	3%	4%	7%	4%	4%
							grade 4 events	8968	8517	8828	16086	10068	8948
								4%	3%	4%	7%	4%	4%
							grade 5 events	3823	9004	4104	9714	5059	4416
								1%	4%	1%	4%	2%	2%
							grade 6 events	16998	53454	22830	60139	23756	20789
								8%	24%	10%	27%	10%	9%
							grade 7 events	65199	53347	62589	46603	66864	64321
								31%	24%	29%	20%	30%	30%

2.2 Compared Parameters

Parameter	Planned	Actual
Instrument	ACIS	ACIS
Detector	ACIS-456789	ACIS-456789
Grating	NONE	NONE
Data mode	FAINT	FAINT
Observation mode	SECONDARY	SECONDARY
[deg] Pointing RA	0	5.969948317484434
[deg] Pointing Dec	0	28.98865172629525
[deg] Pointing Roll	0.0	170.4582515685855
[mm] SIM focus pos	-0.684267	-0.7809083437167272
[mm] SIM defocus	0	0.7524282956875696
[mm] SIM translation stage pos	-190.132523	250.466033080201
[mm] SIM translation stage offset	0	-0.01005468664627074
[s] Observation start time (MET)	275516043.804619	275516042.77963
Observation start date	2006-09-24T20:14:04	2006-09-24T20:14:02
[s] Observation end time (MET)	275525826.405078	275525825.38009
Observation end date	2006-09-24T22:57:06	2006-09-24T22:57:05
Read mode	TIMED	TIMED

Parameter	Planned	Actual
Obspar format version number	7	7
Obspar file type	PREDICTED	ACTUAL
Obspar update status	NONE	UPDATED
On-chip summing requested	N	N
Subarray requested	NONE	NONE
Alternating exposures requested	N	N
[s] Primary exposure time	3.2	3.2

2.3 Star Slots

2.4 FID Slots

A Summary

A.1 Status

V&V Scientist	Beth Sundheim
V&V Date (YYYY-MM-DD)	2012.04.10
V&V Edition	1
V&V Disposition and Status	OK
V&V Charge Time	7.7919999710321

A.2 Comments