

V&V Reference Report

L2 ASCDS Version : 8.4.3.1

Observation 58745 - L2 Version 2
Chandra X-Ray Center

L2 Processing Date : Apr 11 2012

Contents

1	Front	2
2	OBI	3
2.1	OBI	3
2.1.1	Images	3
2.1.2	Bias	3
2.1.3	Parameters	4
2.1.4	Events	4
2.2	Compared Parameters	5
2.3	Star Slots	6
2.4	FID Slots	6
A	Summary	7
A.1	Status	7
A.2	Comments	7

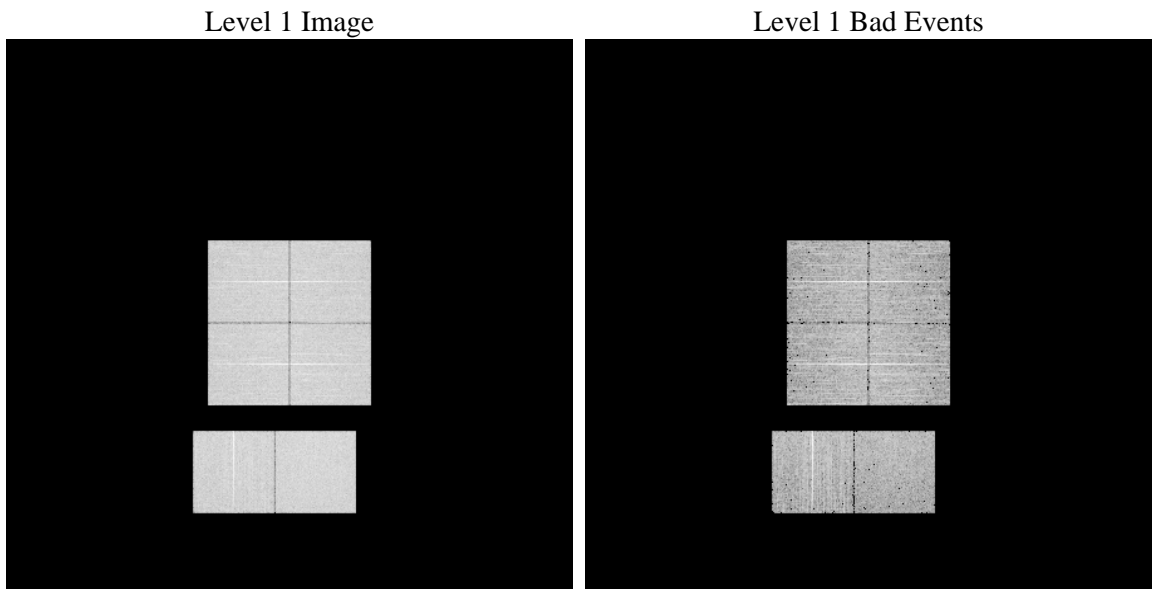
1 Front

seq_num	 	Sequence number
obs_id	58745	Observation id
title	ACIS-012367 diagnostics	Proposal title
observer	CHANDRA engineering request/realtime commanding	Principal investig
object	 	Source name
dtcycle	0	
cycle	P	events from which exps? Prim/Second/Both
ra_targ	0.0	Observer's specified target RA [deg]
dec_targ	0.0	Observer's specified target Dec [deg]
ra_nom	24.966605056428	Nominal RA [deg]
dec_nom	33.992893952395	Nominal Dec [deg]
roll_nom	161.55568471274	Nominal Roll [deg]
revision	2	Processing version of data
ontime	4582.3999829888	Sum of GTIs [s]
livetime	4524.3748752142	Livetime [s]
ontime0	4582.3999829888	Sum of GTIs [s]
ontime1	4582.3999829888	Sum of GTIs [s]
ontime2	4582.3999829888	Sum of GTIs [s]
ontime3	4582.3999829888	Sum of GTIs [s]
ontime6	4582.3999829888	Sum of GTIs [s]
ontime7	4582.3999829888	Sum of GTIs [s]
l2events	468812	Number of level 2 events

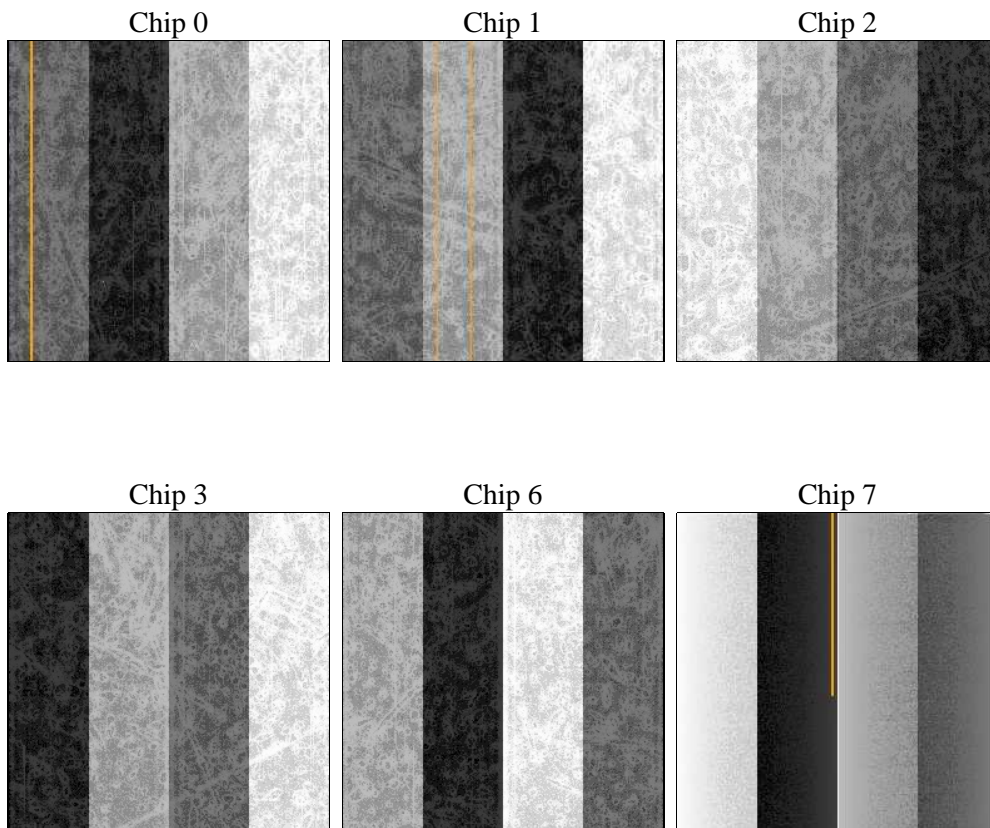
2 OBI

2.1 OBI

2.1.1 Images



2.1.2 Bias



2.1.3 Parameters

obi_num	0	Obi number	sched_exp_time	0.0	[s] Scheduled observation exposure time
ascdsver	8.4.3.1	Processing system revision	ontime	4582.3999829888	Sum of GTIs [s]
caldsver	4.4.9	 	ontime0	4582.3999829888	Sum of GTIs [s]
date	2012-04-11T15:14:25	Date and time of file creation	ontime1	4582.3999829888	Sum of GTIs [s]
revision	2	Processing version of data	ontime2	4582.3999829888	Sum of GTIs [s]
			ontime3	4582.3999829888	Sum of GTIs [s]
			ontime6	4582.3999829888	Sum of GTIs [s]
			ontime7	4582.3999829888	Sum of GTIs [s]
			l1events	727851	Number of level 1 events

2.1.4 Events

	ccd 0	ccd 1	ccd 2	ccd 3	ccd 6	ccd 7		ccd 0	ccd 1	ccd 2	ccd 3	ccd 6	ccd 7
level 1 events	116980	115913	119618	120983	123859	130498	grade 0 events	42657	42346	43634	44136	44087	21115
rejected events	38479	37066	40994	41525	41695	34132		36%	36%	36%	36%	35%	16%
rejected %	32%	31%	34%	34%	33%	26%	grade 1 events	300	244	314	299	254	79
								0%	0%	0%	0%	0%	0%
							grade 2 events	13932	14265	13278	13513	14347	20843
								11%	12%	11%	11%	11%	15%
							grade 3 events	5053	5130	5298	5234	5234	9333
								4%	4%	4%	4%	4%	7%
							grade 4 events	5047	5050	5204	5314	5033	9269
								4%	4%	4%	4%	4%	7%
							grade 5 events	2087	2141	1950	2396	2305	5756
								1%	1%	1%	1%	1%	4%
							grade 6 events	11860	12105	11266	11305	13525	35876
								10%	10%	9%	9%	10%	27%
							grade 7 events	36044	34632	38674	38786	39074	28227
								30%	29%	32%	32%	31%	21%

2.2 Compared Parameters

Parameter	Planned	Actual	Parameter	Planned	Actual
Instrument	ACIS	ACIS	Obspar format version number	7	7
Detector	ACIS-012367	ACIS-012367	Obspar file type	PREDICTED	ACTUAL
Grating	NONE	NONE	Obspar update status	NONE	UPDATED
Data mode	FAINT	FAINT	On-chip summing requested	N	N
Observation mode	SECONDARY	SECONDARY	Subarray requested	NONE	NONE
[deg] Pointing RA	0	24.96660505642846	Alternating exposures requested	N	N
[deg] Pointing Dec	0	33.99289395239504	[s] Primary exposure time	3.2	3.2
[deg] Pointing Roll	0.0	161.555684712744			
[mm] SIM focus pos	-0.782348	-0.6828225247311905			
[mm] SIM defocus	0	0.8505141146731063			
[mm] SIM translation stage pos	-233.592463	250.466033080201			
[mm] SIM translation stage offset	0	-0.01005468664627074			
[s] Observation start time (MET)	276927386.871109	276927385.84609			
Observation start date	2006-10-11T04:16:27	2006-10-11T04:16:25			
[s] Observation end time (MET)	276946562.572014	276946561.547			
Observation end date	2006-10-11T09:36:03	2006-10-11T09:36:01			
Read mode	TIMED	TIMED			

2.3 Star Slots

2.4 FID Slots

A Summary

A.1 Status

V&V Scientist	Beth Sundheim
V&V Date (YYYY-MM-DD)	2012.04.11
V&V Edition	1
V&V Disposition and Status	OK
V&V Charge Time	4.5823999829888

A.2 Comments