

V&V Reference Report

L2 ASCDS Version : 8.4.3.1

Observation 58717 - L2 Version 2
Chandra X-Ray Center

L2 Processing Date : Apr 12 2012

Contents

1	Front	2
2	OBI	3
2.1	OBI	3
2.1.1	Images	3
2.1.2	Bias	3
2.1.3	Parameters	4
2.1.4	Events	4
2.2	Compared Parameters	5
2.3	Star Slots	6
2.4	FID Slots	6
A	Summary	7
A.1	Status	7
A.2	Comments	7

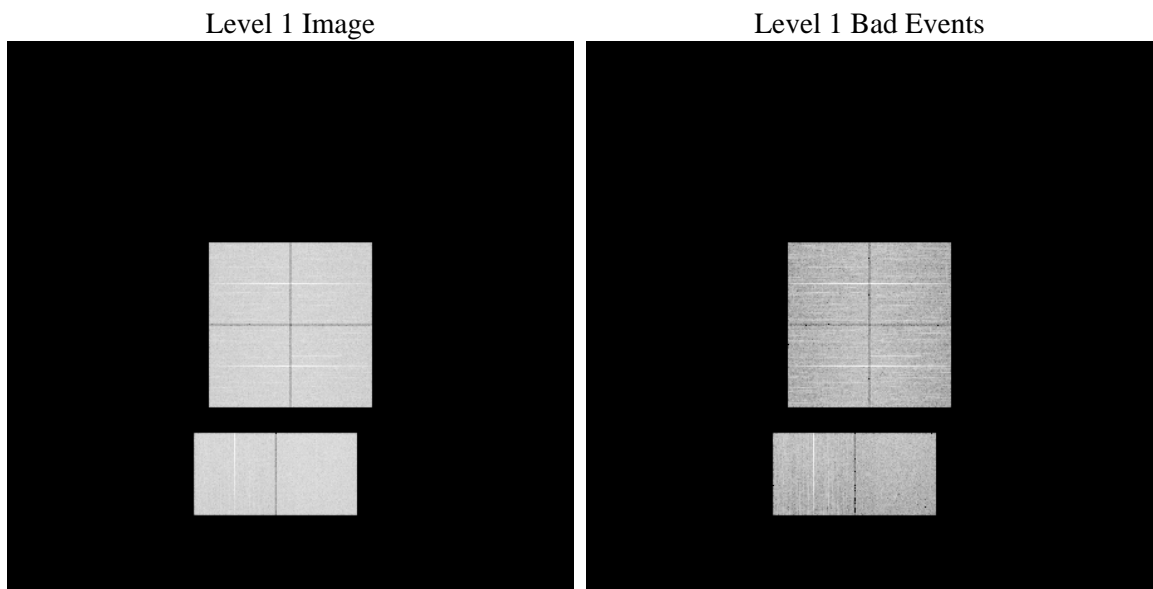
1 Front

seq_num	 	Sequence number
obs_id	58717	Observation id
title	ACIS-012367 diagnostics	Proposal title
observer	CHANDRA engineering request/realtime commanding	Principal investig
object	 	Source name
dtcycle	0	
cycle	P	events from which exps? Prim/Second/Both
ra_targ	0.0	Observer's specified target RA [deg]
dec_targ	0.0	Observer's specified target Dec [deg]
ra_nom	10.025489620132	Nominal RA [deg]
dec_nom	-0.013013869684778	Nominal Dec [deg]
roll_nom	300.12874962332	Nominal Roll [deg]
revision	2	Processing version of data
ontime	7510.3999720812	Sum of GTIs [s]
livetime	7415.2987654148	Livetime [s]
ontime0	7510.3999720812	Sum of GTIs [s]
ontime1	7507.1589718461	Sum of GTIs [s]
ontime2	7510.3999720812	Sum of GTIs [s]
ontime3	7510.3999720812	Sum of GTIs [s]
ontime6	7510.3999720812	Sum of GTIs [s]
ontime7	7510.3999720812	Sum of GTIs [s]
l2events	757006	Number of level 2 events

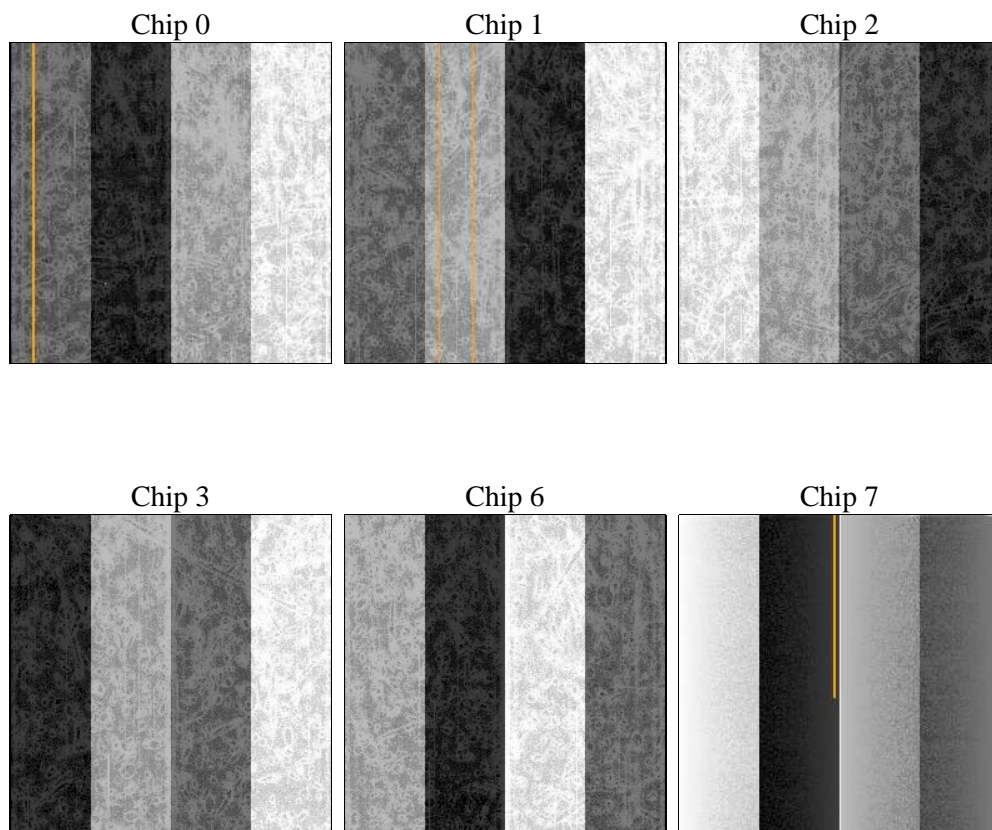
2 OBI

2.1 OBI

2.1.1 Images



2.1.2 Bias



2.1.3 Parameters

obi_num	0	Obi number	sched_exp_time	0.0	[s] Scheduled observation exposure time
ascdsver	8.4.3.1	Processing system revision	ontime	7510.3999720812	Sum of GTIs [s]
caldsver	4.4.9	 	ontime0	7510.3999720812	Sum of GTIs [s]
date	2012-04-12T23:50:45	Date and time of file creation	ontime1	7507.1589718461	Sum of GTIs [s]
revision	2	Processing version of data	ontime2	7510.3999720812	Sum of GTIs [s]
			ontime3	7510.3999720812	Sum of GTIs [s]
			ontime6	7510.3999720812	Sum of GTIs [s]
			ontime7	7510.3999720812	Sum of GTIs [s]
			l1events	1190719	Number of level 1 events

2.1.4 Events

	ccd 0	ccd 1	ccd 2	ccd 3	ccd 6	ccd 7		ccd 0	ccd 1	ccd 2	ccd 3	ccd 6	ccd 7
level 1 events	192017	190568	195440	195818	201198	215678	grade 0 events	69632	69042	71407	71675	72172	34042
rejected events	65725	64014	68060	67880	67997	59202		36%	36%	36%	36%	35%	15%
rejected %	34%	33%	34%	34%	33%	27%	grade 1 events	440	420	563	500	436	158
								0%	0%	0%	0%	0%	0%
							grade 2 events	22469	23108	22098	22166	23627	34602
								11%	12%	11%	11%	11%	16%
							grade 3 events	8588	8361	8555	8749	8659	15295
								4%	4%	4%	4%	4%	7%
							grade 4 events	8356	8438	8706	8598	8551	15230
								4%	4%	4%	4%	4%	7%
							grade 5 events	3439	3639	3441	3935	3928	9469
								1%	1%	1%	2%	1%	4%
							grade 6 events	18902	19292	18299	18420	22018	59374
								9%	10%	9%	9%	10%	27%
							grade 7 events	60191	58268	62371	61775	61807	47508
								31%	30%	31%	31%	30%	22%

2.2 Compared Parameters

Parameter	Planned	Actual	Parameter	Planned	Actual
Instrument	ACIS	ACIS	Obspar format version number	7	7
Detector	ACIS-012367	ACIS-012367	Obspar file type	PREDICTED	ACTUAL
Grating	NONE	NONE	Obspar update status	NONE	UPDATED
Data mode	FAINT	FAINT	On-chip summing requested	N	N
Observation mode	SECONDARY	SECONDARY	Subarray requested	NONE	NONE
[deg] Pointing RA	0	10.02548962013249	Alternating exposures requested	N	N
[deg] Pointing Dec	0	-0.01301386968477754	[s] Primary exposure time	3.2	3.2
[deg] Pointing Roll	0.0	300.128749623319			
[mm] SIM focus pos	-0.782348	-0.6828225247311905			
[mm] SIM defocus	0	0.8505141146731063			
[mm] SIM translation stage pos	-233.592463	250.466033080201			
[mm] SIM translation stage offset	0	-0.01005468664627074			
[s] Observation start time (MET)	278753885.707248	278753884.68224			
Observation start date	2006-11-01T07:38:06	2006-11-01T07:38:04			
[s] Observation end time (MET)	278776484.908315	278776483.88331			
Observation end date	2006-11-01T13:54:45	2006-11-01T13:54:43			
Read mode	TIMED	TIMED			

2.3 Star Slots

2.4 FID Slots

A Summary

A.1 Status

V&V Scientist	Beth Sundheim
V&V Date (YYYY-MM-DD)	2012.04.13
V&V Edition	1
V&V Disposition and Status	OK
V&V Charge Time	7.5103999720812

A.2 Comments