

V&V Reference Report

L2 ASCDS Version : 8.4.3.1

Observation 58710 - L2 Version 2
Chandra X-Ray Center

L2 Processing Date : Apr 13 2012

Contents

1	Front	2
2	OBI	3
2.1	OBI	3
2.1.1	Images	3
2.1.2	Bias	3
2.1.3	Parameters	4
2.1.4	Events	4
2.2	Compared Parameters	5
2.3	Star Slots	6
2.4	FID Slots	6
A	Summary	7
A.1	Status	7
A.2	Comments	7

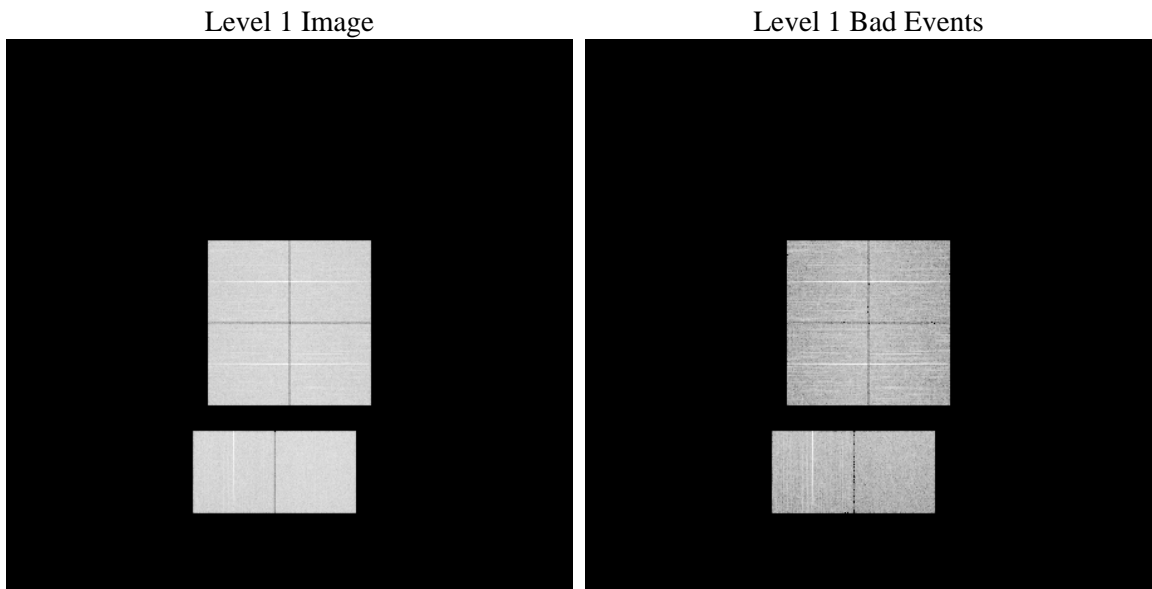
1 Front

seq_num	 	Sequence number
obs_id	58710	Observation id
title	ACIS-012367 diagnostics	Proposal title
observer	CHANDRA engineering request/realtime commanding	Principal investig
object	 	Source name
dtcycle	0	
cycle	P	events from which exps? Prim/Second/Both
ra_targ	0.0	Observer's specified target RA [deg]
dec_targ	0.0	Observer's specified target Dec [deg]
ra_nom	13.0212688102	Nominal RA [deg]
dec_nom	9.9785745674615	Nominal Dec [deg]
roll_nom	286.01560920999	Nominal Roll [deg]
revision	2	Processing version of data
ontime	7795.1999710202	Sum of GTIs [s]
livetime	7696.4924552813	Livetime [s]
ontime0	7795.1999710202	Sum of GTIs [s]
ontime1	7795.1999710202	Sum of GTIs [s]
ontime2	7795.1999710202	Sum of GTIs [s]
ontime3	7795.1999710202	Sum of GTIs [s]
ontime6	7795.1999710202	Sum of GTIs [s]
ontime7	7795.1999710202	Sum of GTIs [s]
l2events	783758	Number of level 2 events

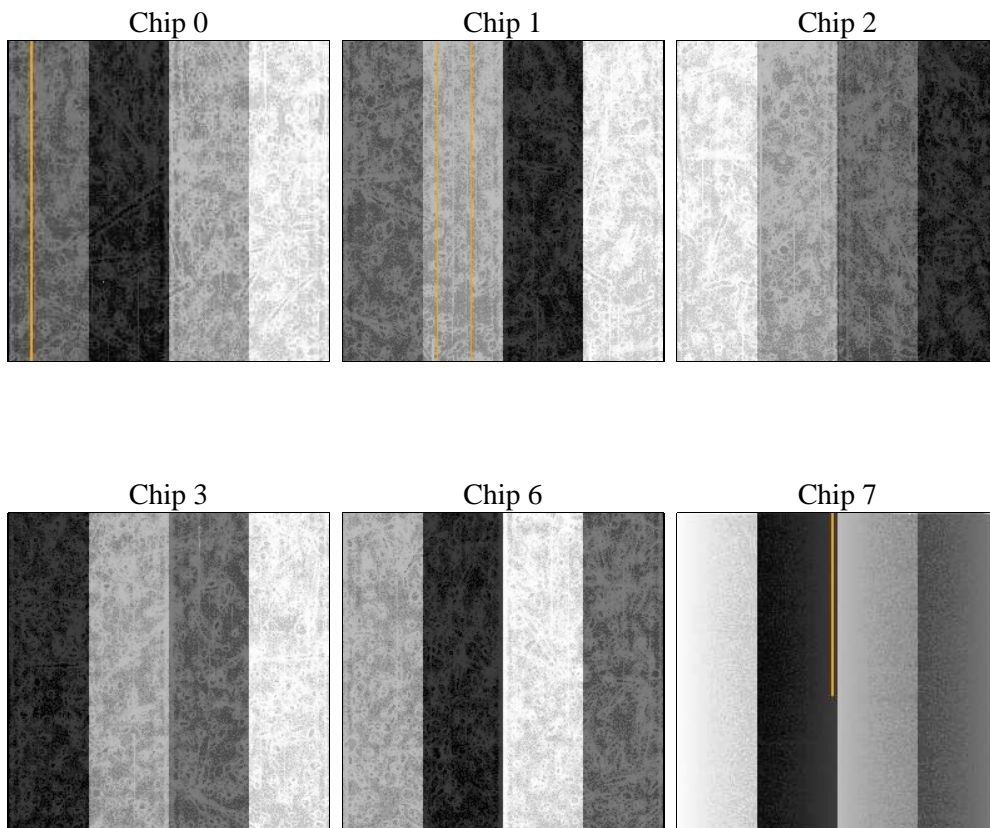
2 OBI

2.1 OBI

2.1.1 Images



2.1.2 Bias



2.1.3 Parameters

obi_num	0	Obi number	sched_exp_time	0.0	[s] Scheduled observation exposure time
ascdsver	8.4.3.1	Processing system revision	ontime	7795.1999710202	Sum of GTIs [s]
caldsver	4.4.9	 	ontime0	7795.1999710202	Sum of GTIs [s]
date	2012-04-13T02:44:16	Date and time of file creation	ontime1	7795.1999710202	Sum of GTIs [s]
revision	2	Processing version of data	ontime2	7795.1999710202	Sum of GTIs [s]
			ontime3	7795.1999710202	Sum of GTIs [s]
			ontime6	7795.1999710202	Sum of GTIs [s]
			ontime7	7795.1999710202	Sum of GTIs [s]
			l1events	1225568	Number of level 1 events

2.1.4 Events

	ccd 0	ccd 1	ccd 2	ccd 3	ccd 6	ccd 7		ccd 0	ccd 1	ccd 2	ccd 3	ccd 6	ccd 7
level 1 events	197267	193369	201594	202738	208903	221697	grade 0 events	71252	70867	73647	73855	73860	35288
rejected events	66884	62155	69912	70052	71666	59493		36%	36%	36%	36%	35%	15%
rejected %	33%	32%	34%	34%	34%	26%	grade 1 events	529	408	508	535	429	171
								0%	0%	0%	0%	0%	0%
							grade 2 events	23360	23751	21957	22509	24083	35736
								11%	12%	10%	11%	11%	16%
							grade 3 events	8486	8417	8857	8648	8527	15707
								4%	4%	4%	4%	4%	7%
							grade 4 events	8421	8503	8726	8980	8609	15437
								4%	4%	4%	4%	4%	6%
							grade 5 events	3646	3899	3361	4108	4115	10099
								1%	2%	1%	2%	1%	4%
							grade 6 events	18918	19724	18545	18694	22218	60105
								9%	10%	9%	9%	10%	27%
							grade 7 events	62655	57800	65993	65409	67062	49154
								31%	29%	32%	32%	32%	22%

2.2 Compared Parameters

Parameter	Planned	Actual	Parameter	Planned	Actual
Instrument	ACIS	ACIS	Obspar format version number	7	7
Detector	ACIS-012367	ACIS-012367	Obspar file type	PREDICTED	ACTUAL
Grating	NONE	NONE	Obspar update status	NONE	UPDATED
Data mode	FAINT	FAINT	On-chip summing requested	N	N
Observation mode	SECONDARY	SECONDARY	Subarray requested	NONE	NONE
[deg] Pointing RA	0	13.02126881020027	Alternating exposures requested	N	N
[deg] Pointing Dec	0	9.978574567461525	[s] Primary exposure time	3.2	3.2
[deg] Pointing Roll	0.0	286.0156092099941			
[mm] SIM focus pos	-0.782348	-0.7809083437167272			
[mm] SIM defocus	0	0.7524282956875696			
[mm] SIM translation stage pos	-233.592463	250.466033080201			
[mm] SIM translation stage offset	0	-0.01005468664627074			
[s] Observation start time (MET)	279400080.587757	279400079.56276			
Observation start date	2006-11-08T19:08:01	2006-11-08T19:07:59			
[s] Observation end time (MET)	279417105.838561	279417104.81356			
Observation end date	2006-11-08T23:51:46	2006-11-08T23:51:44			
Read mode	TIMED	TIMED			

2.3 Star Slots

2.4 FID Slots

A Summary

A.1 Status

V&V Scientist	Beth Sundheim
V&V Date (YYYY-MM-DD)	2012.04.13
V&V Edition	1
V&V Disposition and Status	OK
V&V Charge Time	7.7951999710202

A.2 Comments