

V&V Reference Report

L2 ASCDS Version : 8.4.3.1

Observation 58696 - L2 Version 2
Chandra X-Ray Center

L2 Processing Date : Apr 13 2012

Contents

1	Front	2
2	OBI	3
2.1	OBI	3
2.1.1	Images	3
2.1.2	Bias	3
2.1.3	Parameters	4
2.1.4	Events	4
2.2	Compared Parameters	5
2.3	Star Slots	6
2.4	FID Slots	6
A	Summary	7
A.1	Status	7
A.2	Comments	7

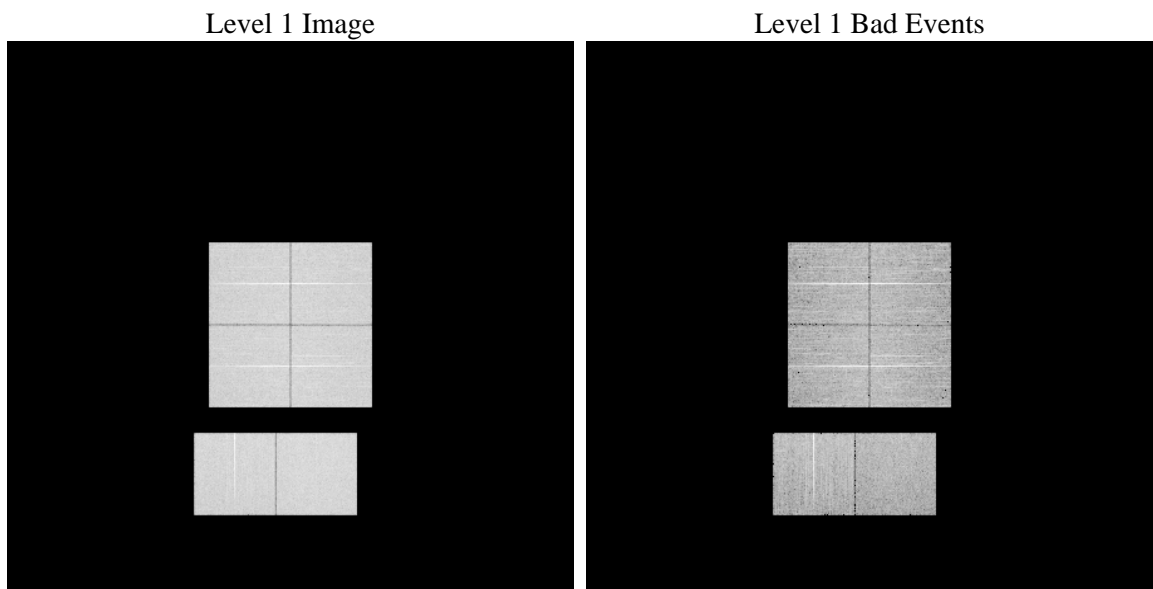
1 Front

seq_num	 	Sequence number
obs_id	58696	Observation id
title	ACIS-012367 diagnostics	Proposal title
observer	CHANDRA engineering request/realtime commanding	Principal investig
object	 	Source name
dtcycle	0	
cycle	P	events from which exps? Prim/Second/Both
ra_targ	0.0	Observer's specified target RA [deg]
dec_targ	0.0	Observer's specified target Dec [deg]
ra_nom	27.027184910843	Nominal RA [deg]
dec_nom	-1.0090917946542	Nominal Dec [deg]
roll_nom	308.69662039838	Nominal Roll [deg]
revision	2	Processing version of data
ontime	7004.7999739647	Sum of GTIs [s]
livetime	6916.1009789102	Livetime [s]
ontime0	7004.7999739647	Sum of GTIs [s]
ontime1	7004.7999739647	Sum of GTIs [s]
ontime2	7004.7999739647	Sum of GTIs [s]
ontime3	7004.7999739647	Sum of GTIs [s]
ontime6	7004.7999739647	Sum of GTIs [s]
ontime7	7004.7999739647	Sum of GTIs [s]
l2events	736352	Number of level 2 events

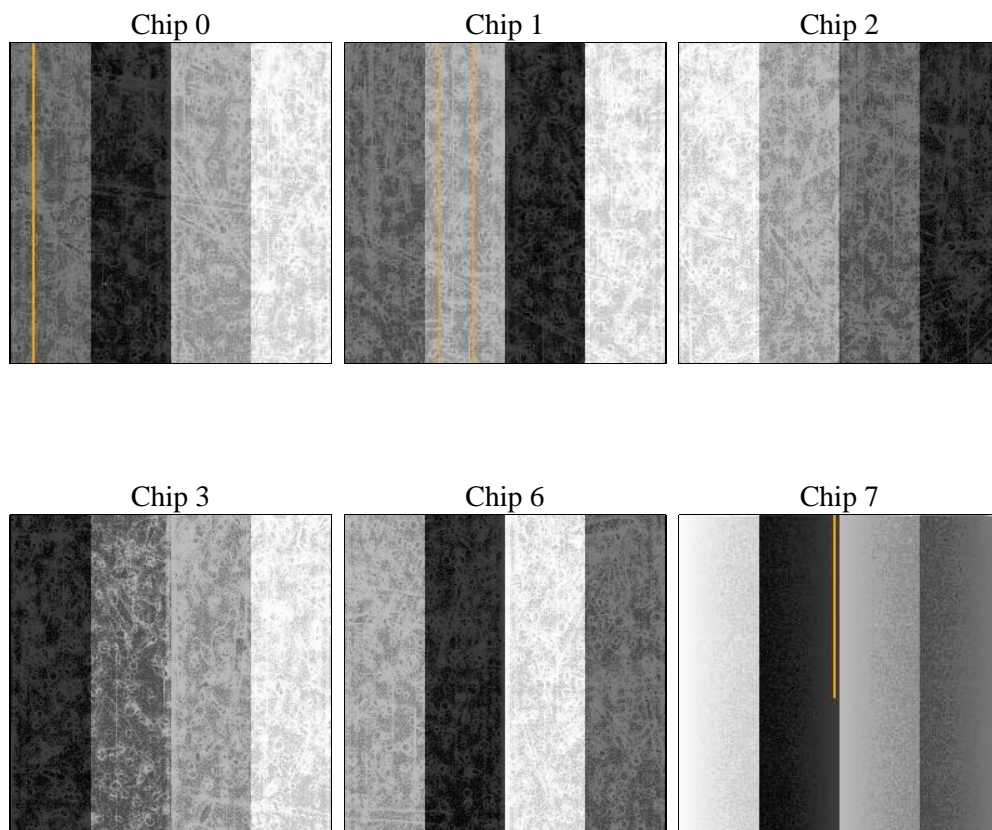
2 OBI

2.1 OBI

2.1.1 Images



2.1.2 Bias



2.1.3 Parameters

obi_num	0	Obi number	sched_exp_time	0.0	[s] Scheduled observation exposure time
ascdsver	8.4.3.1	Processing system revision	ontime	7004.7999739647	Sum of GTIs [s]
caldsver	4.4.9	 	ontime0	7004.7999739647	Sum of GTIs [s]
date	2012-04-13T17:36:37	Date and time of file creation	ontime1	7004.7999739647	Sum of GTIs [s]
revision	2	Processing version of data	ontime2	7004.7999739647	Sum of GTIs [s]
			ontime3	7004.7999739647	Sum of GTIs [s]
			ontime6	7004.7999739647	Sum of GTIs [s]
			ontime7	7004.7999739647	Sum of GTIs [s]
			l1events	1138395	Number of level 1 events

2.1.4 Events

	ccd 0	ccd 1	ccd 2	ccd 3	ccd 6	ccd 7		ccd 0	ccd 1	ccd 2	ccd 3	ccd 6	ccd 7
level 1 events	184112	183662	185233	188197	192935	204256	grade 0 events	67263	65982	68111	69262	68266	32983
rejected events	60601	59902	61688	63359	64510	52933		36%	35%	36%	36%	35%	16%
rejected %	32%	32%	33%	33%	33%	25%	grade 1 events	481	412	537	520	412	138
								0%	0%	0%	0%	0%	0%
							grade 2 events	21410	22742	20944	21071	22516	33471
								11%	12%	11%	11%	11%	16%
							grade 3 events	8142	7851	8234	8238	7922	14478
								4%	4%	4%	4%	4%	7%
							grade 4 events	7879	7946	8203	8153	7968	14215
								4%	4%	4%	4%	4%	6%
							grade 5 events	3064	3439	3113	3614	3580	8779
								1%	1%	1%	1%	1%	4%
							grade 6 events	18817	19239	18053	18114	21753	56176
								10%	10%	9%	9%	11%	27%
							grade 7 events	57056	56051	58038	59225	60518	44016
								30%	30%	31%	31%	31%	21%

2.2 Compared Parameters

Parameter	Planned	Actual	Parameter	Planned	Actual
Instrument	ACIS	ACIS	Obspar format version number	7	7
Detector	ACIS-012367	ACIS-012367	Obspar file type	PREDICTED	ACTUAL
Grating	NONE	NONE	Obspar update status	NONE	UPDATED
Data mode	FAINT	FAINT	On-chip summing requested	N	N
Observation mode	SECONDARY	SECONDARY	Subarray requested	NONE	NONE
[deg] Pointing RA	0	27.02718491084298	Alternating exposures requested	N	N
[deg] Pointing Dec	0	-1.009091794654176	[s] Primary exposure time	3.2	3.2
[deg] Pointing Roll	0.0	308.6966203983758			
[mm] SIM focus pos	-0.782348	-0.6828225247311905			
[mm] SIM defocus	0	0.8505141146731063			
[mm] SIM translation stage pos	-233.592463	250.466033080201			
[mm] SIM translation stage offset	0	-0.01005468664627074			
[s] Observation start time (MET)	280313470.4309	280313469.40589			
Observation start date	2006-11-19T08:51:10	2006-11-19T08:51:09			
[s] Observation end time (MET)	280326666.281523	280326665.25652			
Observation end date	2006-11-19T12:31:06	2006-11-19T12:31:05			
Read mode	TIMED	TIMED			

2.3 Star Slots

2.4 FID Slots

A Summary

A.1 Status

V&V Scientist	Beth Sundheim
V&V Date (YYYY-MM-DD)	2012.04.16
V&V Edition	1
V&V Disposition and Status	OK
V&V Charge Time	7.0047999739647

A.2 Comments