

# V&V Reference Report

## L2 ASCDS Version : 8.4.3.1

Observation 58667 - L2 Version 2  
Chandra X-Ray Center

L2 Processing Date : Apr 14 2012

## Contents

<b>1</b>	<b>Front</b>	<b>2</b>
<b>2</b>	<b>OBI</b>	<b>3</b>
2.1	OBI . . . . .	3
2.1.1	Images . . . . .	3
2.1.2	Bias . . . . .	3
2.1.3	Parameters . . . . .	4
2.1.4	Events . . . . .	4
2.2	Compared Parameters . . . . .	5
2.3	Star Slots . . . . .	6
2.4	FID Slots . . . . .	6
<b>A</b>	<b>Summary</b>	<b>7</b>
A.1	Status . . . . .	7
A.2	Comments . . . . .	7

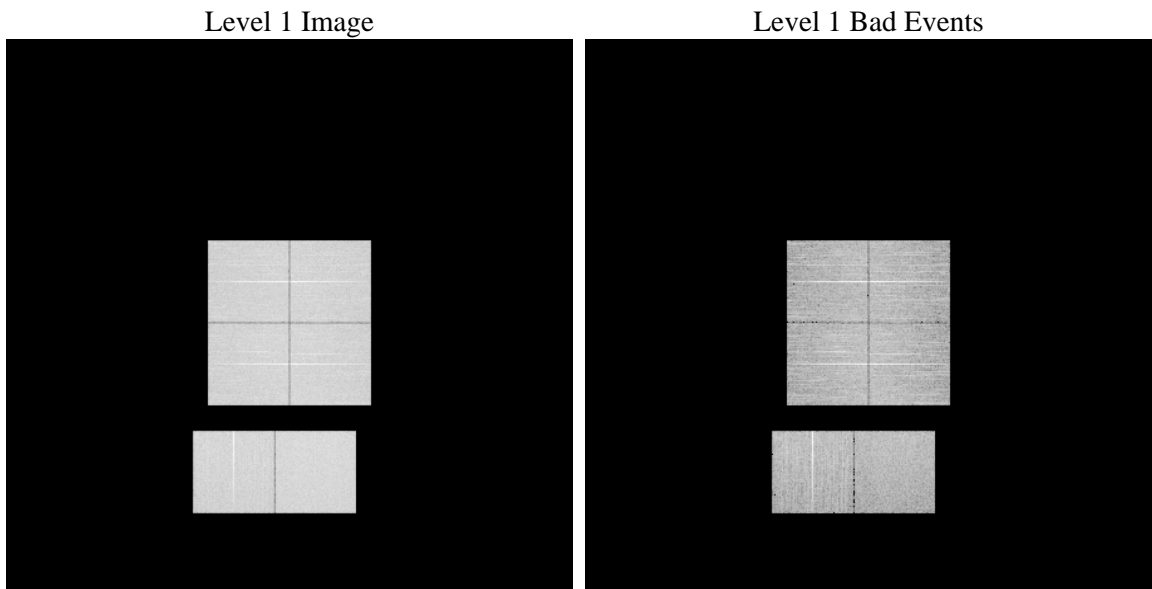
# 1 Front

seq_num	&#160	Sequence number
obs_id	58667	Observation id
title	ACIS-012367 diagnostics	Proposal title
observer	CHANDRA engineering request/realtime commanding	Principal investig
object	&#160	Source name
dtcycle	0	&#160
cycle	P	events from which exps? Prim/Second/Both
ra_targ	0.0	Observer's specified target RA [deg]
dec_targ	0.0	Observer's specified target Dec [deg]
ra_nom	33.012463627824	Nominal RA [deg]
dec_nom	29.97351065043	Nominal Dec [deg]
roll_nom	259.38385078801	Nominal Roll [deg]
revision	2	Processing version of data
ontime	8274.303101182	Sum of GTIs [s]
livetime	8169.5288931276	Livetime [s]
ontime0	8274.303101182	Sum of GTIs [s]
ontime1	8274.303081274	Sum of GTIs [s]
ontime2	8274.303081274	Sum of GTIs [s]
ontime3	8274.303081274	Sum of GTIs [s]
ontime6	8274.9146518111	Sum of GTIs [s]
ontime7	8274.303101182	Sum of GTIs [s]
l2events	821848	Number of level 2 events

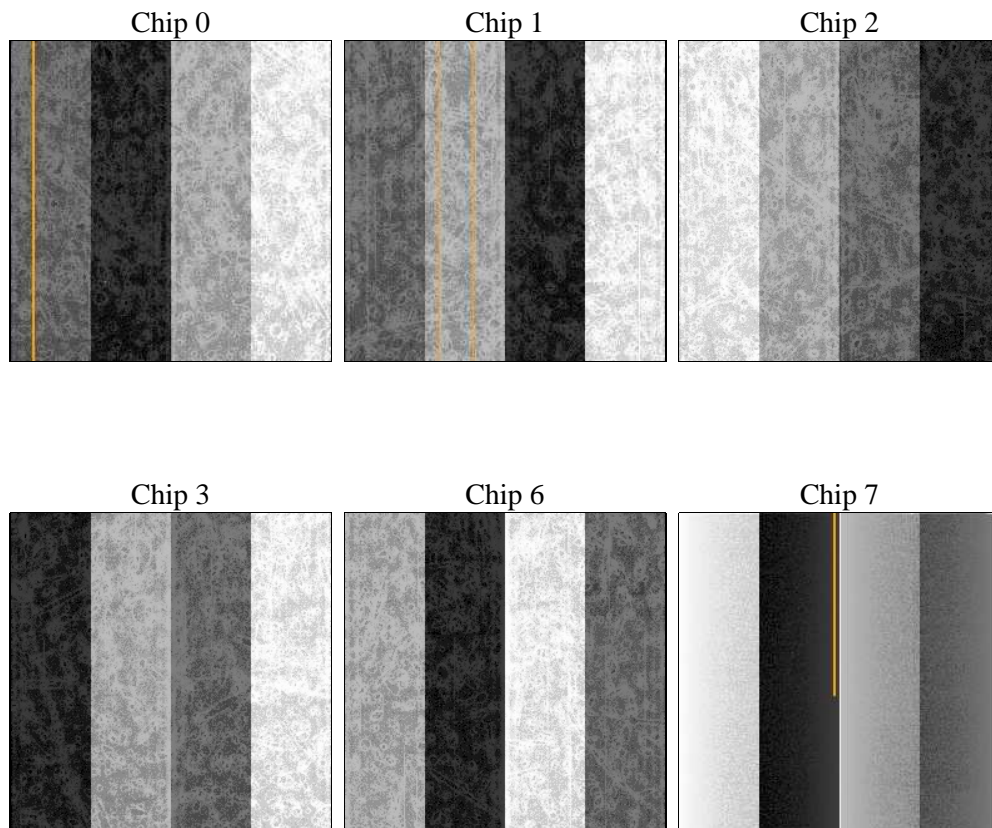
## 2 OBI

### 2.1 OBI

#### 2.1.1 Images



#### 2.1.2 Bias



### 2.1.3 Parameters

obi_num	0	Obi number	sched_exp_time	0.0	[s] Scheduled observation exposure time
ascdsver	8.4.3.1	Processing system revision	ontime	8274.303101182	Sum of GTIs [s]
caldsver	4.4.9	&#160	ontime0	8274.303101182	Sum of GTIs [s]
date	2012-04-14T07:09:29	Date and time of file creation	ontime1	8274.303081274	Sum of GTIs [s]
revision	2	Processing version of data	ontime2	8274.303081274	Sum of GTIs [s]
			ontime3	8274.303081274	Sum of GTIs [s]
			ontime6	8274.9146518111	Sum of GTIs [s]
			ontime7	8274.303101182	Sum of GTIs [s]
			l1events	1282104	Number of level 1 events

### 2.1.4 Events

	ccd 0	ccd 1	ccd 2	ccd 3	ccd 6	ccd 7		ccd 0	ccd 1	ccd 2	ccd 3	ccd 6	ccd 7
level 1 events	205141	205467	211323	211730	215586	232857	grade 0 events	74568	73743	76650	77313	76446	36975
rejected events	68319	68051	72953	72366	72425	62296		36%	35%	36%	36%	35%	15%
rejected %	33%	33%	34%	34%	33%	26%	grade 1 events	485	436	582	527	490	185
								0%	0%	0%	0%	0%	0%
							grade 2 events	24454	25022	23458	23972	24948	37249
								11%	12%	11%	11%	11%	15%
							grade 3 events	8899	8923	9257	9299	9229	16595
								4%	4%	4%	4%	4%	7%
							grade 4 events	8731	8963	9092	9210	9229	16367
								4%	4%	4%	4%	4%	7%
							grade 5 events	3673	4097	3516	4139	4252	10537
								1%	1%	1%	1%	1%	4%
							grade 6 events	20170	20765	19913	19570	23366	63375
								9%	10%	9%	9%	10%	27%
							grade 7 events	64161	63518	68855	67700	67626	51574
								31%	30%	32%	31%	31%	22%

## 2.2 Compared Parameters

Parameter	Planned	Actual
Instrument	ACIS	ACIS
Detector	ACIS-012367	ACIS-012367
Grating	NONE	NONE
Data mode	FAINT	FAINT
Observation mode	SECONDARY	SECONDARY
[deg] Pointing RA	0	33.01246362782407
[deg] Pointing Dec	0	29.97351065043005
[deg] Pointing Roll	0.0	259.3838507880112
[mm] SIM focus pos	-0.782348	-0.7809083437167272
[mm] SIM defocus	0	0.7524282956875696
[mm] SIM translation stage pos	-233.592463	250.466033080201
[mm] SIM translation stage offset	0	-0.01005468664627074
[s] Observation start time (MET)	281042124.51528	281042123.4903
Observation start date	2006-11-27T19:15:25	2006-11-27T19:15:23
[s] Observation end time (MET)	281065351.016375	281065349.9914
Observation end date	2006-11-28T01:42:31	2006-11-28T01:42:29
Read mode	TIMED	TIMED

Parameter	Planned	Actual
Obspar format version number	7	7
Obspar file type	PREDICTED	ACTUAL
Obspar update status	NONE	UPDATED
On-chip summing requested	N	N
Subarray requested	NONE	NONE
Alternating exposures requested	N	N
[s] Primary exposure time	3.2	3.2

## **2.3 Star Slots**

## **2.4 FID Slots**

## A Summary

### A.1 Status

V&V Scientist	Beth Sundheim
V&V Date (YYYY-MM-DD)	2012.04.17
V&V Edition	1
V&V Disposition and Status	OK
V&V Charge Time	8.274303101182

### A.2 Comments