

V&V Reference Report

L2 ASCDS Version : 8.4.3.1

Observation 58629 - L2 Version 2
Chandra X-Ray Center

L2 Processing Date : Apr 16 2012

Contents

1	Front	2
2	OBI	3
2.1	OBI	3
2.1.1	Images	3
2.1.2	Bias	3
2.1.3	Parameters	4
2.1.4	Events	4
2.2	Compared Parameters	5
2.3	Star Slots	6
2.4	FID Slots	6
A	Summary	7
A.1	Status	7
A.2	Comments	7

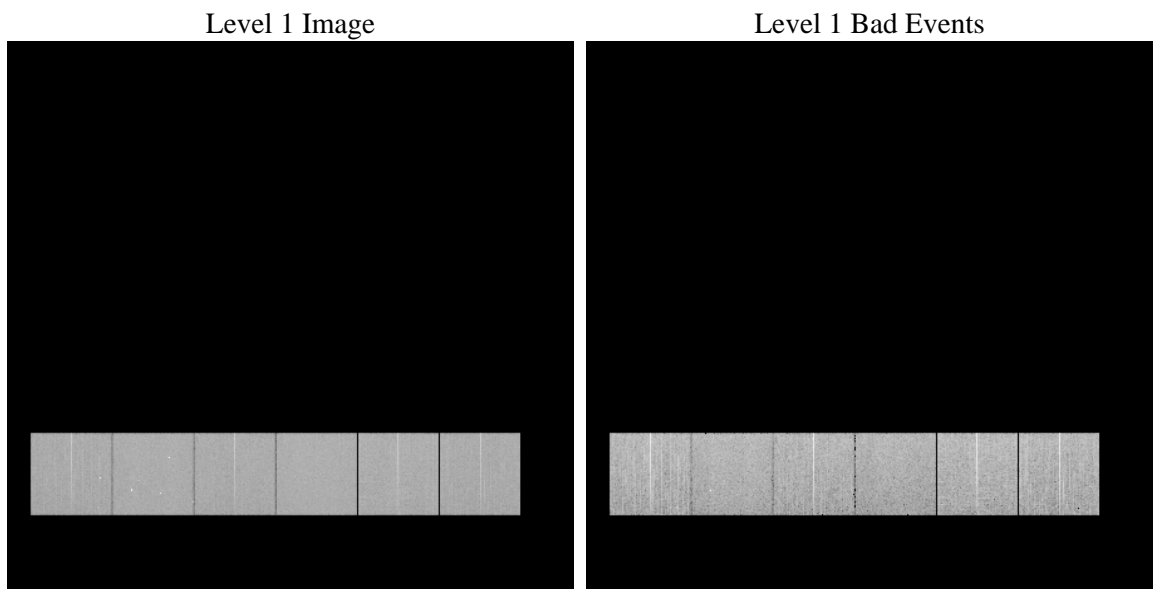
1 Front

seq_num	 	Sequence number
obs_id	58629	Observation id
title	ACIS-456789 diagnostics	Proposal title
observer	CHANDRA engineering request/realtime commanding	Principal investig
object	 	Source name
dtcycle	0	
cycle	P	events from which exps? Prim/Second/Both
ra_targ	0.0	Observer's specified target RA [deg]
dec_targ	0.0	Observer's specified target Dec [deg]
ra_nom	121.69218819706	Nominal RA [deg]
dec_nom	17.027726123704	Nominal Dec [deg]
roll_nom	72.131160426934	Nominal Roll [deg]
revision	2	Processing version of data
ontime	7775.9999710917	Sum of GTIs [s]
livetime	7677.5355773127	Livetime [s]
ontime4	7471.346622169	Sum of GTIs [s]
ontime5	7775.9999710917	Sum of GTIs [s]
ontime6	7578.299482584	Sum of GTIs [s]
ontime7	7775.9999710917	Sum of GTIs [s]
ontime8	7594.5044438839	Sum of GTIs [s]
ontime9	7537.8060732484	Sum of GTIs [s]
l2events	859163	Number of level 2 events

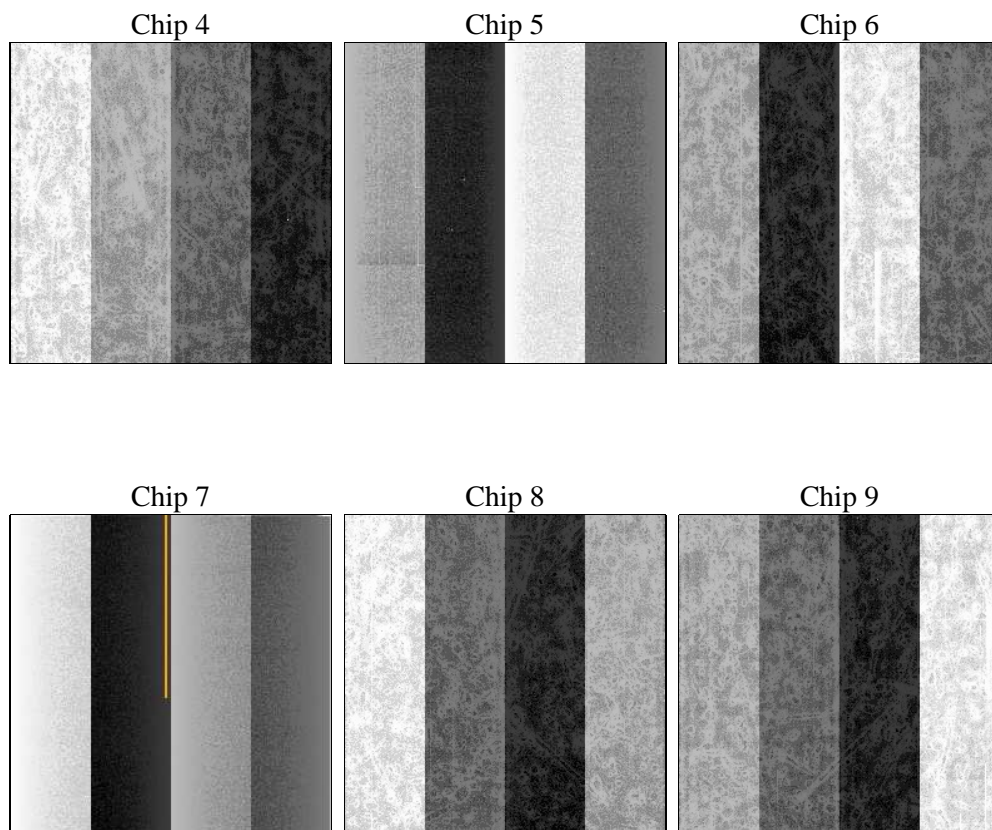
2 OBI

2.1 OBI

2.1.1 Images



2.1.2 Bias



2.1.3 Parameters

obi_num	0	Obi number	sched_exp_time	0.0	[s] Scheduled observation exposure time
ascdsver	8.4.3.1	Processing system revision	ontime	7775.9999710917	Sum of GTIs [s]
caldsver	4.4.9	 	ontime4	7471.346622169	Sum of GTIs [s]
date	2012-04-16T05:39:00	Date and time of file creation	ontime5	7775.9999710917	Sum of GTIs [s]
revision	2	Processing version of data	ontime6	7578.299482584	Sum of GTIs [s]
			ontime7	7775.9999710917	Sum of GTIs [s]
			ontime8	7594.5044438839	Sum of GTIs [s]
			ontime9	7537.8060732484	Sum of GTIs [s]
			l1events	1322271	Number of level 1 events

2.1.4 Events

	ccd 4	ccd 5	ccd 6	ccd 7	ccd 8	ccd 9		ccd 4	ccd 5	ccd 6	ccd 7	ccd 8	ccd 9
level 1 events	208588	224269	213095	231424	232082	212813	grade 0 events	78320	28082	77662	39332	82433	76684
rejected events	72813	63357	65950	57369	72521	69810		37%	12%	36%	16%	35%	36%
rejected %	34%	28%	30%	24%	31%	32%	grade 1 events	757	193	477	158	570	565
								0%	0%	0%	0%	0%	0%
							grade 2 events	20294	61104	25660	37961	28337	24286
								9%	27%	12%	16%	12%	11%
							grade 3 events	9133	7808	9001	16209	10579	9185
								4%	3%	4%	7%	4%	4%
							grade 4 events	9177	7422	9106	16164	10593	9145
								4%	3%	4%	6%	4%	4%
							grade 5 events	3600	8589	3820	9398	4869	4214
								1%	3%	1%	4%	2%	1%
							grade 6 events	18935	56583	25788	64470	27684	23703
								9%	25%	12%	27%	11%	11%
							grade 7 events	68372	54488	61581	47732	67017	65031
								32%	24%	28%	20%	28%	30%

2.2 Compared Parameters

Parameter	Planned	Actual
Instrument	ACIS	ACIS
Detector	ACIS-456789	ACIS-456789
Grating	NONE	NONE
Data mode	FAINT	FAINT
Observation mode	SECONDARY	SECONDARY
[deg] Pointing RA	0	121.6921881970596
[deg] Pointing Dec	0	17.02772612370383
[deg] Pointing Roll	0.0	72.13116042693365
[mm] SIM focus pos	-0.684267	-0.7809083437167272
[mm] SIM defocus	0	0.7524282956875696
[mm] SIM translation stage pos	-190.132523	250.466033080201
[mm] SIM translation stage offset	0	-0.01005468664627074
[s] Observation start time (MET)	283283600.77132	283283599.74632
Observation start date	2006-12-23T17:53:21	2006-12-23T17:53:19
[s] Observation end time (MET)	283295177.121868	283295176.09687
Observation end date	2006-12-23T21:06:17	2006-12-23T21:06:16
Read mode	TIMED	TIMED

Parameter	Planned	Actual
Obspar format version number	7	7
Obspar file type	PREDICTED	ACTUAL
Obspar update status	NONE	UPDATED
On-chip summing requested	N	N
Subarray requested	NONE	NONE
Alternating exposures requested	N	N
[s] Primary exposure time	3.2	3.2

2.3 Star Slots

2.4 FID Slots

A Summary

A.1 Status

V&V Scientist	Jen Lauer
V&V Date (YYYY-MM-DD)	2012.04.18
V&V Edition	1
V&V Disposition and Status	OK
V&V Charge Time	7.7759999710917

A.2 Comments