

V&V Reference Report

L2 ASCDS Version : 8.4.3.1

Observation 58626 - L2 Version 2
Chandra X-Ray Center

L2 Processing Date : Apr 16 2012

Contents

1	Front	2
2	OBI	3
2.1	OBI	3
2.1.1	Images	3
2.1.2	Bias	3
2.1.3	Parameters	4
2.1.4	Events	4
2.2	Compared Parameters	5
2.3	Star Slots	6
2.4	FID Slots	6
A	Summary	7
A.1	Status	7
A.2	Comments	7

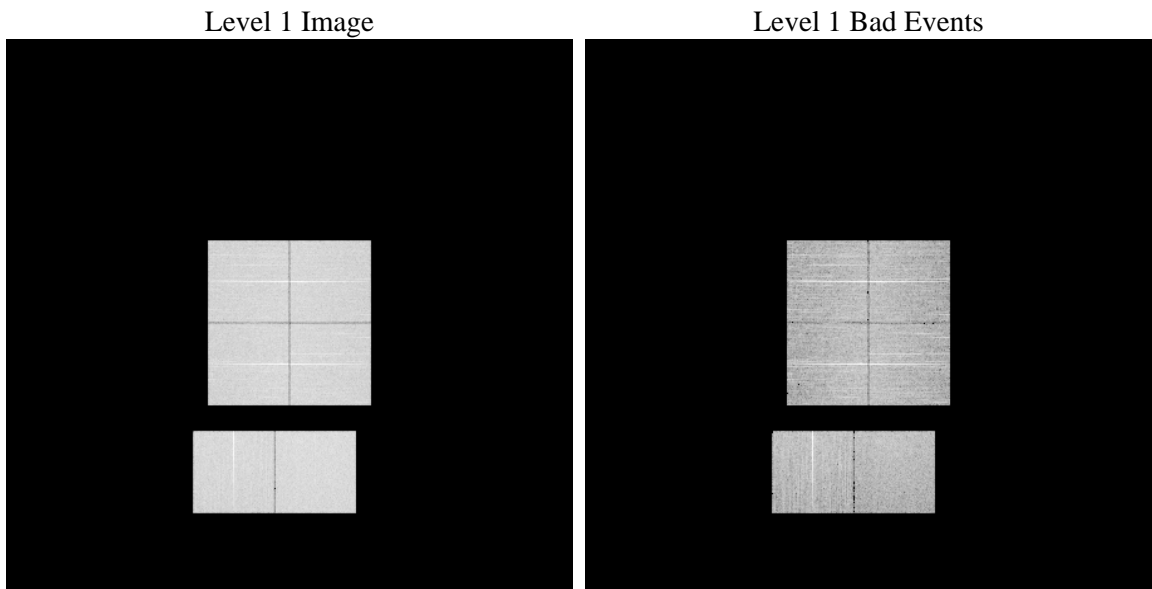
1 Front

seq_num	 	Sequence number
obs_id	58626	Observation id
title	ACIS-012367 diagnostics	Proposal title
observer	CHANDRA engineering request/realtime commanding	Principal investig
object	 	Source name
dtcycle	0	
cycle	P	events from which exps? Prim/Second/Both
ra_targ	0.0	Observer's specified target RA [deg]
dec_targ	0.0	Observer's specified target Dec [deg]
ra_nom	121.99218276619	Nominal RA [deg]
dec_nom	17.027747722007	Nominal Dec [deg]
roll_nom	72.148254628076	Nominal Roll [deg]
revision	2	Processing version of data
ontime	8259.1999692917	Sum of GTIs [s]
livetime	8154.6170061874	Livetime [s]
ontime0	8259.1999692917	Sum of GTIs [s]
ontime1	8259.1999692917	Sum of GTIs [s]
ontime2	8259.1999692917	Sum of GTIs [s]
ontime3	8259.1999692917	Sum of GTIs [s]
ontime6	8259.1999692917	Sum of GTIs [s]
ontime7	8259.1999692917	Sum of GTIs [s]
l2events	803191	Number of level 2 events

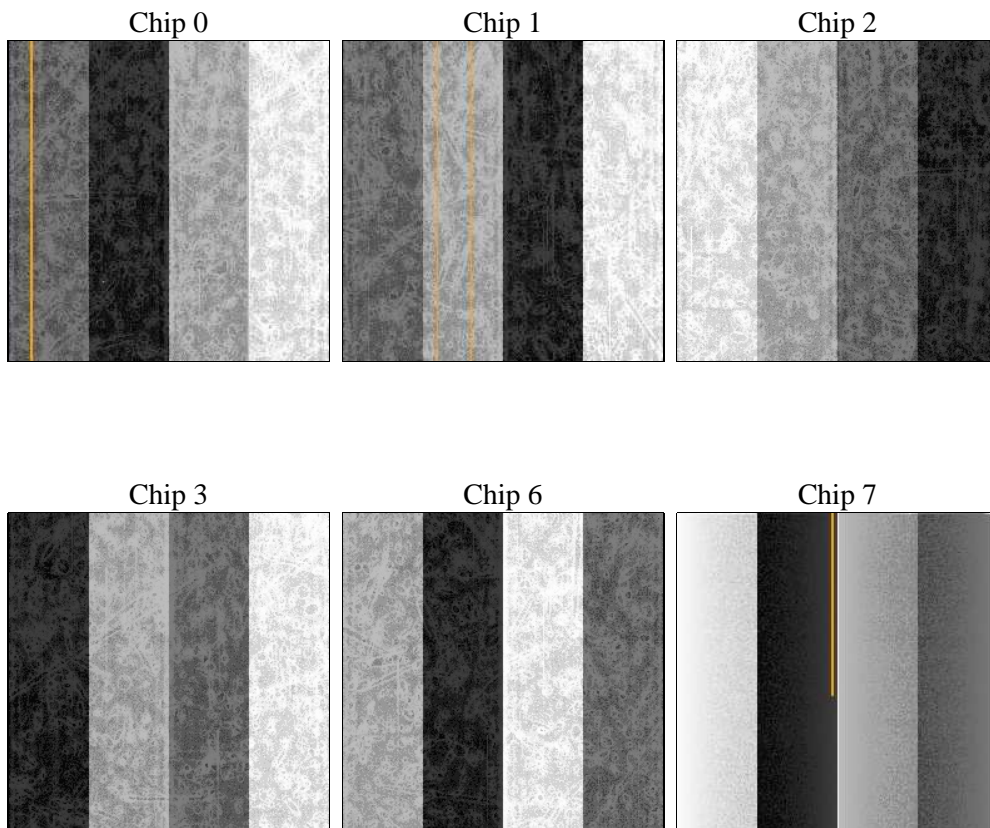
2 OBI

2.1 OBI

2.1.1 Images



2.1.2 Bias



2.1.3 Parameters

obi_num	0	Obi number	sched_exp_time	0.0	[s] Scheduled observation exposure time
ascdsver	8.4.3.1	Processing system revision	ontime	8259.1999692917	Sum of GTIs [s]
caldsver	4.4.9	 	ontime0	8259.1999692917	Sum of GTIs [s]
date	2012-04-16T05:53:37	Date and time of file creation	ontime1	8259.1999692917	Sum of GTIs [s]
revision	2	Processing version of data	ontime2	8259.1999692917	Sum of GTIs [s]
			ontime3	8259.1999692917	Sum of GTIs [s]
			ontime6	8259.1999692917	Sum of GTIs [s]
			ontime7	8259.1999692917	Sum of GTIs [s]
			l1events	1237187	Number of level 1 events

2.1.4 Events

	ccd 0	ccd 1	ccd 2	ccd 3	ccd 6	ccd 7		ccd 0	ccd 1	ccd 2	ccd 3	ccd 6	ccd 7
level 1 events	198857	196247	202175	203612	210587	225709	grade 0 events	72740	72550	74918	75337	75260	36212
rejected events	64824	61726	66939	67487	70118	59678		36%	36%	37%	37%	35%	16%
rejected %	32%	31%	33%	33%	33%	26%	grade 1 events	497	432	543	564	445	140
								0%	0%	0%	0%	0%	0%
							grade 2 events	23841	24327	22913	23325	24340	35982
								11%	12%	11%	11%	11%	15%
							grade 3 events	8934	8694	8922	9150	8889	16182
								4%	4%	4%	4%	4%	7%
							grade 4 events	8751	8757	9103	9178	8904	15794
								4%	4%	4%	4%	4%	6%
							grade 5 events	3749	3789	3542	4164	3992	10063
								1%	1%	1%	2%	1%	4%
							grade 6 events	19767	20193	19380	19135	23076	61861
								9%	10%	9%	9%	10%	27%
							grade 7 events	60578	57505	62854	62759	65681	49475
								30%	29%	31%	30%	31%	21%

2.2 Compared Parameters

Parameter	Planned	Actual
Instrument	ACIS	ACIS
Detector	ACIS-012367	ACIS-012367
Grating	NONE	NONE
Data mode	FAINT	FAINT
Observation mode	SECONDARY	SECONDARY
[deg] Pointing RA	0	121.992182766191
[deg] Pointing Dec	0	17.0277477220073
[deg] Pointing Roll	0.0	72.14825462807592
[mm] SIM focus pos	-0.782348	-0.7809083437167272
[mm] SIM defocus	0	0.7524282956875696
[mm] SIM translation stage pos	-233.592463	250.466033080201
[mm] SIM translation stage offset	0	-0.01005468664627074
[s] Observation start time (MET)	283324699.173267	283324698.14827
Observation start date	2006-12-24T05:18:19	2006-12-24T05:18:18
[s] Observation end time (MET)	283346740.774311	283346739.74931
Observation end date	2006-12-24T11:25:41	2006-12-24T11:25:39
Read mode	TIMED	TIMED

Parameter	Planned	Actual
Obspar format version number	7	7
Obspar file type	PREDICTED	ACTUAL
Obspar update status	NONE	UPDATED
On-chip summing requested	N	N
Subarray requested	NONE	NONE
Alternating exposures requested	N	N
[s] Primary exposure time	3.2	3.2

2.3 Star Slots

2.4 FID Slots

A Summary

A.1 Status

V&V Scientist	Jen Lauer
V&V Date (YYYY-MM-DD)	2012.04.18
V&V Edition	1
V&V Disposition and Status	OK
V&V Charge Time	8.2591999692917

A.2 Comments