

V&V Reference Report

L2 ASCDS Version : 7.6.7.2

Observation 60419 - L2 Version 001
Chandra X-Ray Center

L2 Processing Date : Jun 8 2006

Contents

1	Front	2
2	OBI	3
2.1	OBI	3
2.1.1	Images	3
2.1.2	Bias	3
2.1.3	Parameters	4
2.1.4	Events	4
2.2	Compared Parameters	5
2.3	Aspect	6
2.4	Star Slots	8
2.5	FID Slots	8
A	Summary	9
A.1	Status	9
A.2	Comments	9

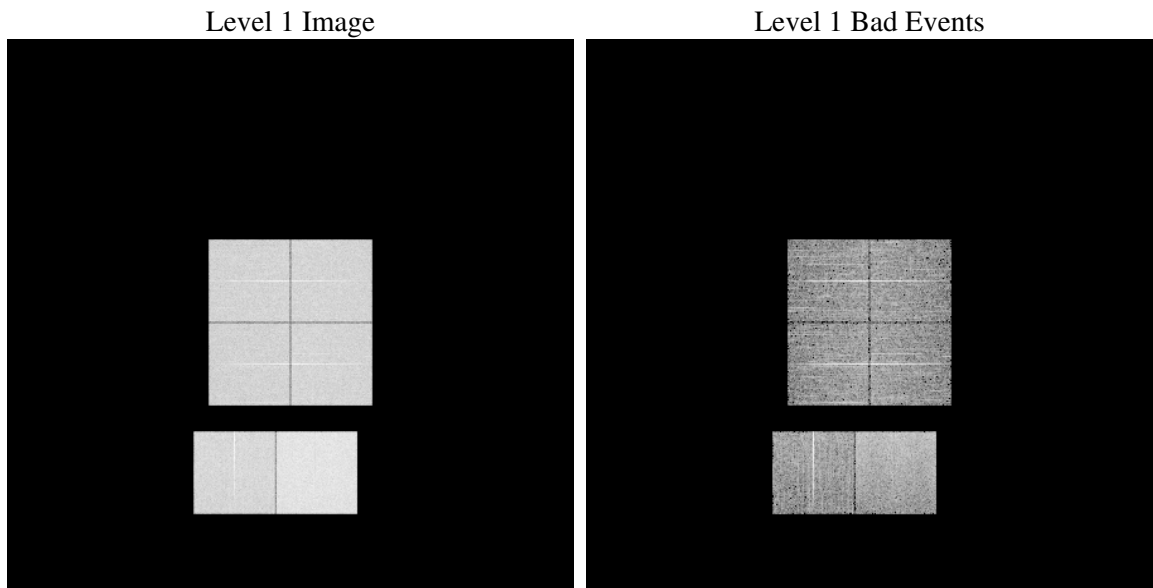
1 Front

seq_num	
obs_id	60419
title	ACIS-012367 diagnostics
observer	CHANDRA engineering request/realtime commanding
object	
dtcycle	0
cycle	P
ra_targ	0.0
dec_targ	0.0
ra_nom	120.95413041694
dec_nom	51.498436018347
roll_nom	150.24054542764
revision	2
ontime	7804.7999709249
livetime	7705.9708942067
ontime0	5412.9542424083
ontime1	5540.1572083831
ontime2	5192.5670449734
ontime3	5455.7685208619
ontime6	5750.9037922621
ontime7	7804.7999709249
l2events	1137949

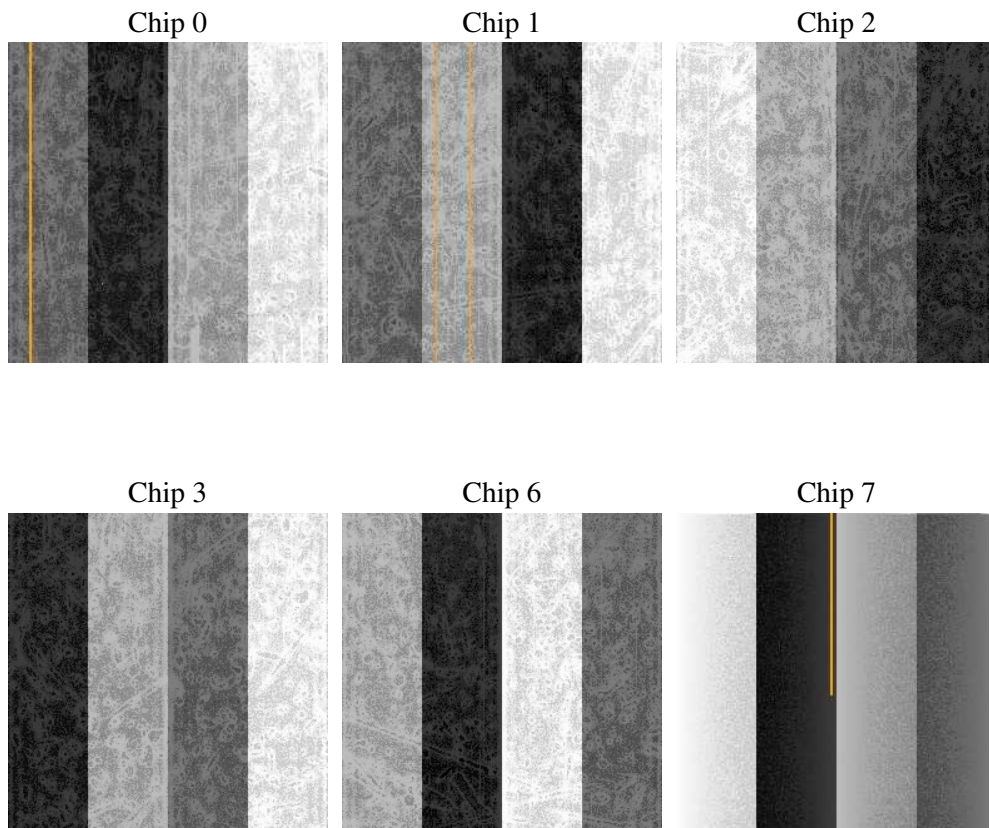
2 OBI

2.1 OBI

2.1.1 Images



2.1.2 Bias



2.1.3 Parameters

obi_num	0
ascdsver	7.6.7.2
caldbver	3.2.2
date	2006-06-08T14:01:47
revision	2

sched_exp_time	0.0
ontime	7807.5920995772
ontime0	5415.7463710606
ontime1	5542.1447011232
ontime2	5195.3591736257
ontime3	5457.8791336119
ontime6	5752.8092050254
ontime7	7807.5920995772
l1events	1418923

2.1.4 Events

	ccd 0	ccd 1	ccd 2	ccd 3	ccd 6	ccd 7
level 1 events	213583	217538	209342	220175	238342	319943
rejected events	33163	33132	34860	34665	37516	52549
rejected %	15%	15%	16%	15%	15%	16%

	ccd 0	ccd 1	ccd 2	ccd 3	ccd 6	ccd 7
grade 0 events	100069	101524	98737	104915	109579	46881
	46%	46%	47%	47%	45%	14%
grade 1 events	536	466	539	568	498	127
	0%	0%	0%	0%	0%	0%
grade 2 events	31444	33004	28900	31399	34771	81937
	14%	15%	13%	14%	14%	25%
grade 3 events	11522	11600	11402	11726	12397	19060
	5%	5%	5%	5%	5%	5%
grade 4 events	11545	11557	11386	12083	12472	18909
	5%	5%	5%	5%	5%	5%
grade 5 events	2324	2228	2054	2328	2689	6403
	1%	1%	0%	1%	1%	2%
grade 6 events	25949	26811	24169	25489	31729	100700
	12%	12%	11%	11%	13%	31%
grade 7 events	30194	30348	32155	31667	34207	45926
	14%	13%	15%	14%	14%	14%

2.2 Compared Parameters

Parameter	Planned	Actual	Parameter	Planned	Actual
Instrument	ACIS	ACIS	Obspar format version number	6	6
Detector	ACIS-012367	ACIS-012367	Obspar file type	PREDICTED	ACTUAL
Grating	NONE	NONE	Obspar update status	NONE	UPDATED
Data mode	FAINT	FAINT	On-chip summing requested	N	N
Observation mode	SECONDARY	SECONDARY	Subarray requested	NONE	NONE
Pointing RA	0	120.9541304169352	Alternating exposures requested	N	N
Pointing Dec	0	51.49843601834711	Primary exposure time	0.000000	3.2
Pointing Roll	0.0	150.2405454276435			
SIM focus pos (mm)	-0.782348	-0.6828225247311905			
SIM defocus (mm)	0	0.8505141146731063			
SIM translation stage pos (mm)	-233.592463	250.466033080201			
SIM translation stage offset (mm)	0	-0.01005468664627074			
Observation start time	189613282.698693	189613281.67398			
Observation start date	2004-01-04T14:21:23	2004-01-04T14:21:21			
Observation end time	189653311.000434	189653309.97572			
Observation end date	2004-01-05T01:28:31	2004-01-05T01:28:29			
Read mode	TIMED	TIMED			

2.3 Aspect

2.4 Star Slots

2.5 FID Slots

A Summary

A.1 Status

V&V Scientist	Jen Lauer
V&V Date (YYYY-MM-DD)	2006.06.08
V&V Edition	1
V&V Disposition and Status	OK
V&V Charge Time	7.80479997

A.2 Comments

The ACIS focal plane temperature is above calibration limits for the entire observation.