

# V&V Reference Report

## L2 ASCDS Version : 7.6.7.2

Observation 60393 - L2 Version 001  
Chandra X-Ray Center

L2 Processing Date : Jun 7 2006

## Contents

<b>1</b>	<b>Front</b>	<b>2</b>
<b>2</b>	<b>OBI</b>	<b>3</b>
2.1	OBI . . . . .	3
2.1.1	Images . . . . .	3
2.1.2	Bias . . . . .	3
2.1.3	Parameters . . . . .	4
2.1.4	Events . . . . .	4
2.2	Compared Parameters . . . . .	5
2.3	Aspect . . . . .	6
2.4	Star Slots . . . . .	8
2.5	FID Slots . . . . .	8
<b>A</b>	<b>Summary</b>	<b>9</b>
A.1	Status . . . . .	9
A.2	Comments . . . . .	9

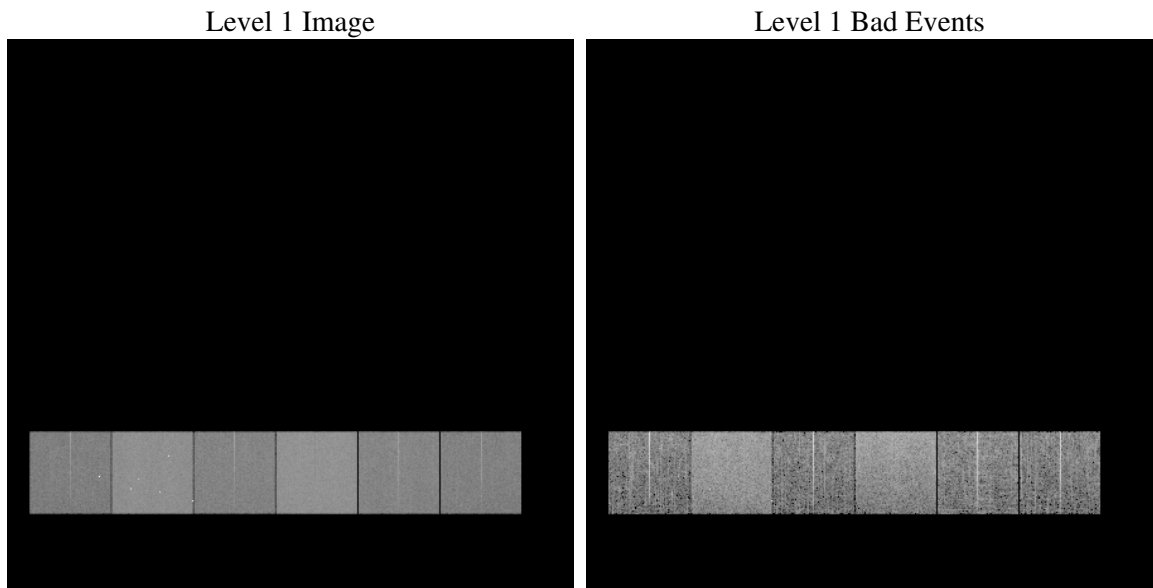
# 1 Front

seq_num	&#160
obs_id	60393
title	ACIS-456789 diagnostics
observer	CHANDRA engineering request/realtime commanding
object	&#160
dtcycle	0
cycle	P
ra_targ	0.0
dec_targ	0.0
ra_nom	250.90420456635
dec_nom	57.328502518432
roll_nom	52.569676872789
revision	2
ontime	8462.43417117
livetime	8355.2777342285
ontime4	5208.6254771352
ontime5	8462.4752111733
ontime6	5655.8384613991
ontime7	8462.43417117
ontime8	5714.2580861747
ontime9	5386.7154583335
l2events	1218423

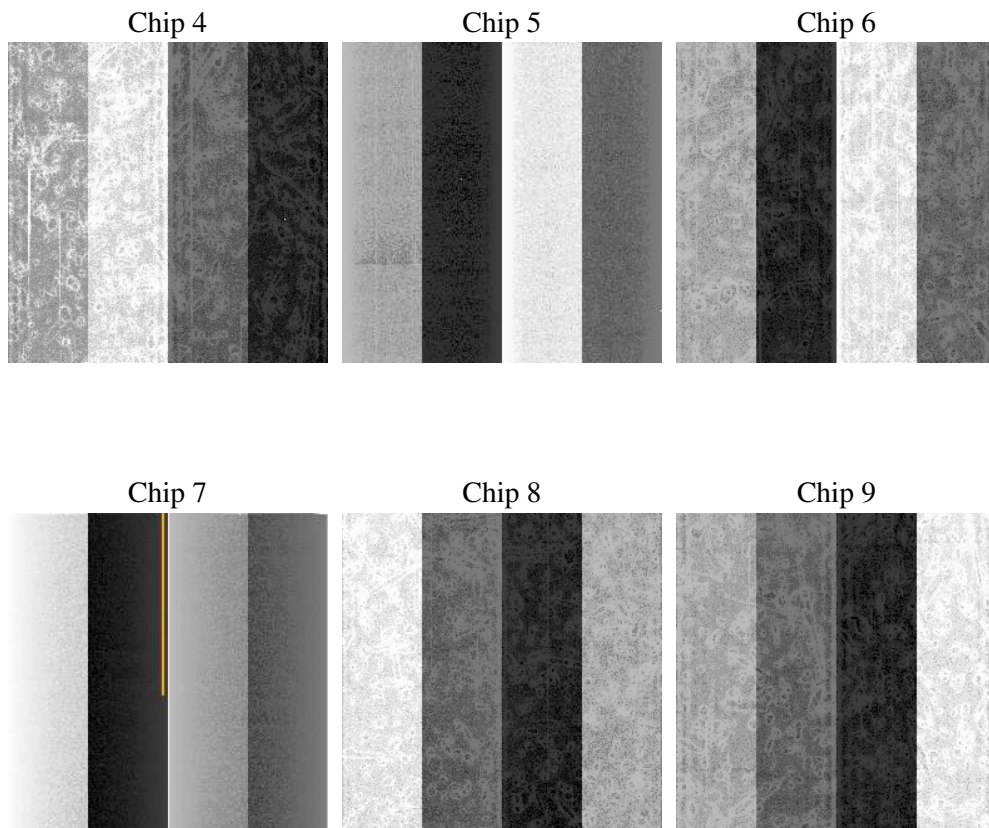
## 2 OBI

### 2.1 OBI

#### 2.1.1 Images



#### 2.1.2 Bias



### 2.1.3 Parameters

obi_num	0
ascdsver	7.6.7.2
caldsver	3.2.2
date	2006-06-07T09:45:04
revision	2

sched_exp_time	0.0
ontime	8465.492189467
ontime4	5211.5603754222
ontime5	8465.492189467
ontime6	5658.8143996894
ontime7	8465.492189467
ontime8	5717.1519444883
ontime9	5389.8145166337
l1events	1535529

### 2.1.4 Events

	ccd 4	ccd 5	ccd 6	ccd 7	ccd 8	ccd 9
level 1 events	202827	314357	229673	337256	238133	213283
rejected events	33416	56795	33282	52241	38100	33602
rejected %	16%	18%	14%	15%	15%	15%

	ccd 4	ccd 5	ccd 6	ccd 7	ccd 8	ccd 9
grade 0 events	99039	31927	106932	50757	109936	99333
	48%	10%	46%	15%	46%	46%
grade 1 events	637	198	493	115	532	501
	0%	0%	0%	0%	0%	0%
grade 2 events	26841	121518	34055	86117	35068	30839
	13%	38%	14%	25%	14%	14%
grade 3 events	11198	8495	12338	21081	12778	11390
	5%	2%	5%	6%	5%	5%
grade 4 events	11049	8486	12263	20187	12987	11506
	5%	2%	5%	5%	5%	5%
grade 5 events	2166	6243	2400	6417	2895	2416
	1%	1%	1%	1%	1%	1%
grade 6 events	21370	87247	30918	106968	29391	26728
	10%	27%	13%	31%	12%	12%
grade 7 events	30527	50243	30274	45614	34546	30570
	15%	15%	13%	13%	14%	14%

## 2.2 Compared Parameters

Parameter	Planned	Actual	Parameter	Planned	Actual
Instrument	ACIS	ACIS	Obspar format version number	6	6
Detector	ACIS-456789	ACIS-456789	Obspar file type	PREDICTED	ACTUAL
Grating	NONE	NONE	Obspar update status	NONE	UPDATED
Data mode	FAINT	FAINT	On-chip summing requested	N	N
Observation mode	SECONDARY	SECONDARY	Subarray requested	NONE	NONE
Pointing RA	0	250.9042045663473	Alternating exposures requested	N	N
Pointing Dec	0	57.32850251843207	Primary exposure time	0.000000	3.2
Pointing Roll	0.0	52.56967687278885			
SIM focus pos (mm)	-0.684267	-0.6828225247311905			
SIM defocus (mm)	0	0.8505141146731063			
SIM translation stage pos (mm)	-190.132523	250.466033080201			
SIM translation stage offset (mm)	0	-0.01005468664627074			
Observation start time	191479615.080032	191479614.05532			
Observation start date	2004-01-26T04:46:55	2004-01-26T04:46:54			
Observation end time	191502085.131013	191502084.1063			
Observation end date	2004-01-26T11:01:25	2004-01-26T11:01:24			
Read mode	TIMED	TIMED			

## 2.3 Aspect



## **2.4 Star Slots**

## **2.5 FID Slots**



## A Summary

### A.1 Status

V&V Scientist	Jen Lauer
V&V Date (YYYY-MM-DD)	2006.06.07
V&V Edition	1
V&V Disposition and Status	OK
V&V Charge Time	8.46243417

### A.2 Comments