

V&V Reference Report

L2 ASCDS Version : 7.6.7.2

Observation 60382 - L2 Version 001
Chandra X-Ray Center

L2 Processing Date : Jun 4 2006

Contents

1	Front	2
2	OBI	3
2.1	OBI	3
2.1.1	Images	3
2.1.2	Bias	3
2.1.3	Parameters	4
2.1.4	Events	4
2.2	Compared Parameters	5
2.3	Aspect	6
2.4	Star Slots	8
2.5	FID Slots	8
A	Summary	9
A.1	Status	9
A.2	Comments	9

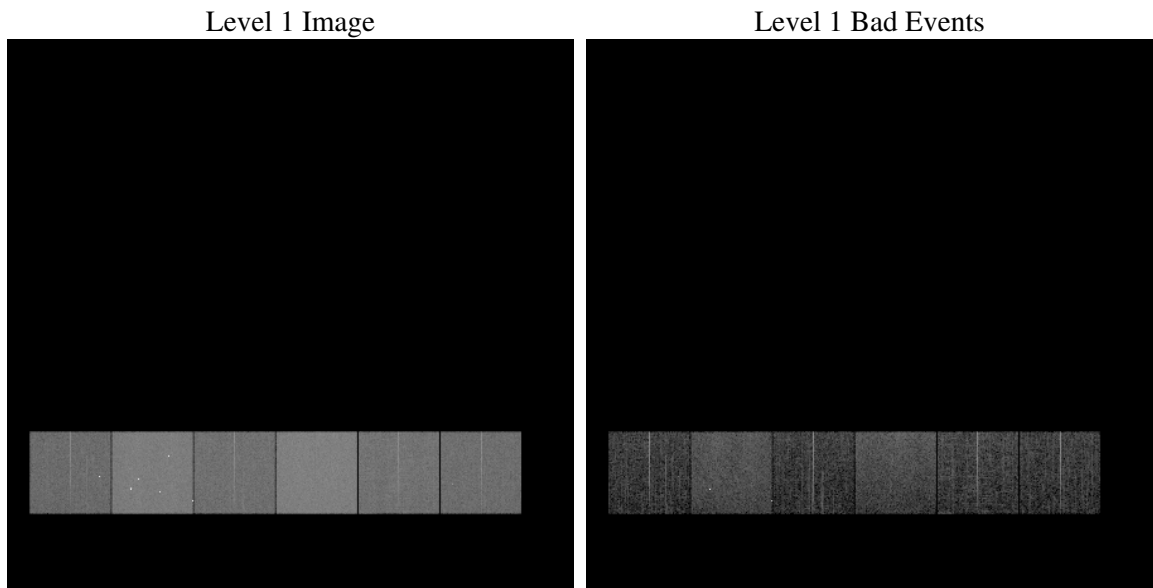
1 Front

seq_num	
obs_id	60382
title	ACIS-456789 diagnostics
observer	CHANDRA engineering request/realtime commanding
object	
dtcycle	0
cycle	P
ra_targ	0.0
dec_targ	0.0
ra_nom	158.01463998151
dec_nom	-17.975029080982
roll_nom	27.878315053235
revision	2
ontime	7801.2801298201
livetime	7702.4956234494
ontime4	4638.2133250237
ontime5	7801.3211698234
ontime6	5085.4287427664
ontime7	7801.2801298201
ontime8	5176.2576411963
ontime9	4897.3278017342
l2events	1103457

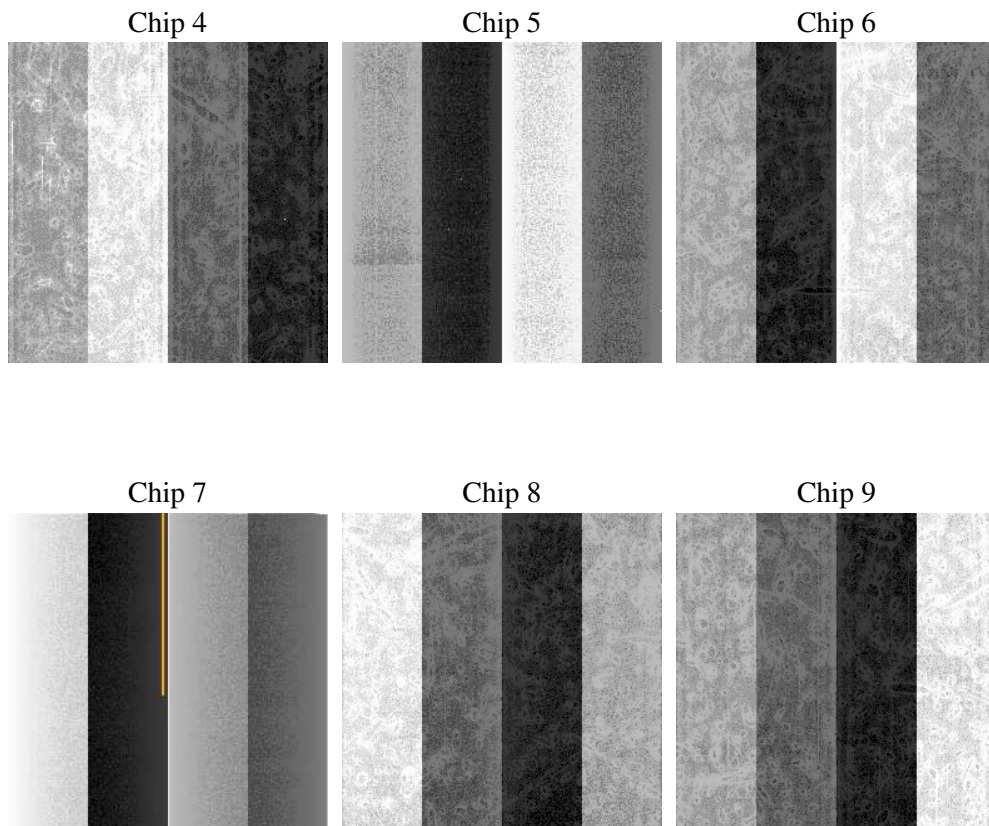
2 OBI

2.1 OBI

2.1.1 Images



2.1.2 Bias



2.1.3 Parameters

obi_num	0
ascdsver	7.6.7.2
caldbver	3.2.2
date	2006-06-05T01:07:23
revision	2

sched_exp_time	0.0
ontime	7804.3343911469
ontime4	4641.1444663405
ontime5	7804.3343911469
ontime6	5088.4009240866
ontime7	7804.3343911469
ontime8	5179.1477425396
ontime9	4900.4231030643
l1events	1416377

2.1.4 Events

	ccd 4	ccd 5	ccd 6	ccd 7	ccd 8	ccd 9
level 1 events	181670	299194	207593	315834	218257	193829
rejected events	33416	58891	32432	50570	37658	32474
rejected %	18%	19%	15%	16%	17%	16%

	ccd 4	ccd 5	ccd 6	ccd 7	ccd 8	ccd 9
grade 0 events	86826	30454	95908	48160	99233	89214
	47%	10%	46%	15%	45%	46%
grade 1 events	610	229	389	109	461	471
	0%	0%	0%	0%	0%	0%
grade 2 events	23231	112824	30225	79835	31503	27591
	12%	37%	14%	25%	14%	14%
grade 3 events	9825	7200	10901	19641	11673	10307
	5%	2%	5%	6%	5%	5%
grade 4 events	9654	6945	10929	19265	11677	10519
	5%	2%	5%	6%	5%	5%
grade 5 events	2132	6122	2307	6411	2691	2339
	1%	2%	1%	2%	1%	1%
grade 6 events	18826	82994	27290	98485	26620	23838
	10%	27%	13%	31%	12%	12%
grade 7 events	30566	52426	29644	43928	34399	29550
	16%	17%	14%	13%	15%	15%

2.2 Compared Parameters

Parameter	Planned	Actual	Parameter	Planned	Actual
Instrument	ACIS	ACIS	Obspar format version number	6	6
Detector	ACIS-456789	ACIS-456789	Obspar file type	PREDICTED	ACTUAL
Grating	NONE	NONE	Obspar update status	NONE	UPDATED
Data mode	FAINT	FAINT	On-chip summing requested	N	N
Observation mode	SECONDARY	SECONDARY	Subarray requested	NONE	NONE
Pointing RA	0	158.0146399815112	Alternating exposures requested	N	N
Pointing Dec	0	-17.9750290809816	Primary exposure time	0.000000	3.2
Pointing Roll	0.0	27.87831505323536			
SIM focus pos (mm)	-0.684267	-0.6828225247311905			
SIM defocus (mm)	0	0.8505141146731063			
SIM translation stage pos (mm)	-190.132523	250.466033080201			
SIM translation stage offset (mm)	0	-0.01005468664627074			
Observation start time	192588316.628488	192588315.60377			
Observation start date	2004-02-08T00:45:17	2004-02-08T00:45:15			
Observation end time	192604013.479175	192604012.45445			
Observation end date	2004-02-08T05:06:53	2004-02-08T05:06:52			
Read mode	TIMED	TIMED			

2.3 Aspect

2.4 Star Slots

2.5 FID Slots

A Summary

A.1 Status

V&V Scientist	Jen Lauer
V&V Date (YYYY-MM-DD)	2006.06.05
V&V Edition	1
V&V Disposition and Status	OK
V&V Charge Time	7.80128012

A.2 Comments