

V&V Reference Report

L2 ASCDS Version : 7.6.7.2

Observation 60365 - L2 Version 001
Chandra X-Ray Center

L2 Processing Date : Jun 2 2006

Contents

1	Front	2
2	OBI	3
2.1	OBI	3
2.1.1	Images	3
2.1.2	Bias	3
2.1.3	Parameters	4
2.1.4	Events	4
2.2	Compared Parameters	5
2.3	Aspect	6
2.4	Star Slots	8
2.5	FID Slots	8
A	Summary	9
A.1	Status	9
A.2	Comments	9

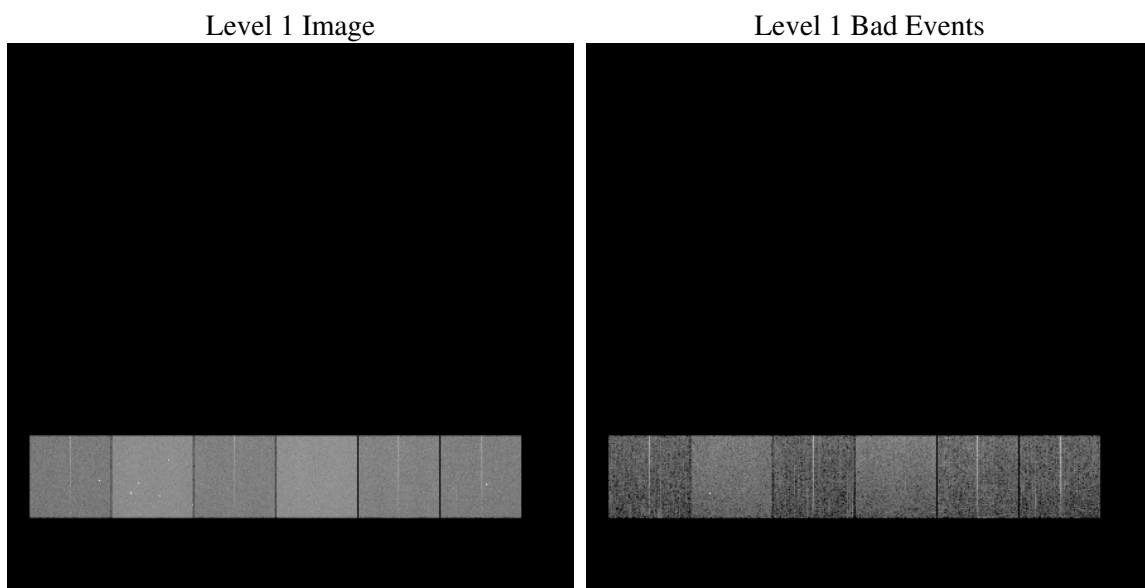
1 Front

seq_num	
obs_id	60365
title	ACIS-456789 diagnostics
observer	CHANDRA engineering request/realtime commanding
object	
dtcycle	0
cycle	P
ra_targ	0.0
dec_targ	0.0
ra_nom	158.06984069785
dec_nom	25.091756530446
roll_nom	163.89051753225
revision	2
ontime	7798.3999709487
livetime	7699.6519348838
ontime4	4482.8723480701
ontime5	7798.3999709487
ontime6	4978.9040513039
ontime7	7798.3999709487
ontime8	5088.9384478033
ontime9	4832.9369293749
l2events	1092004

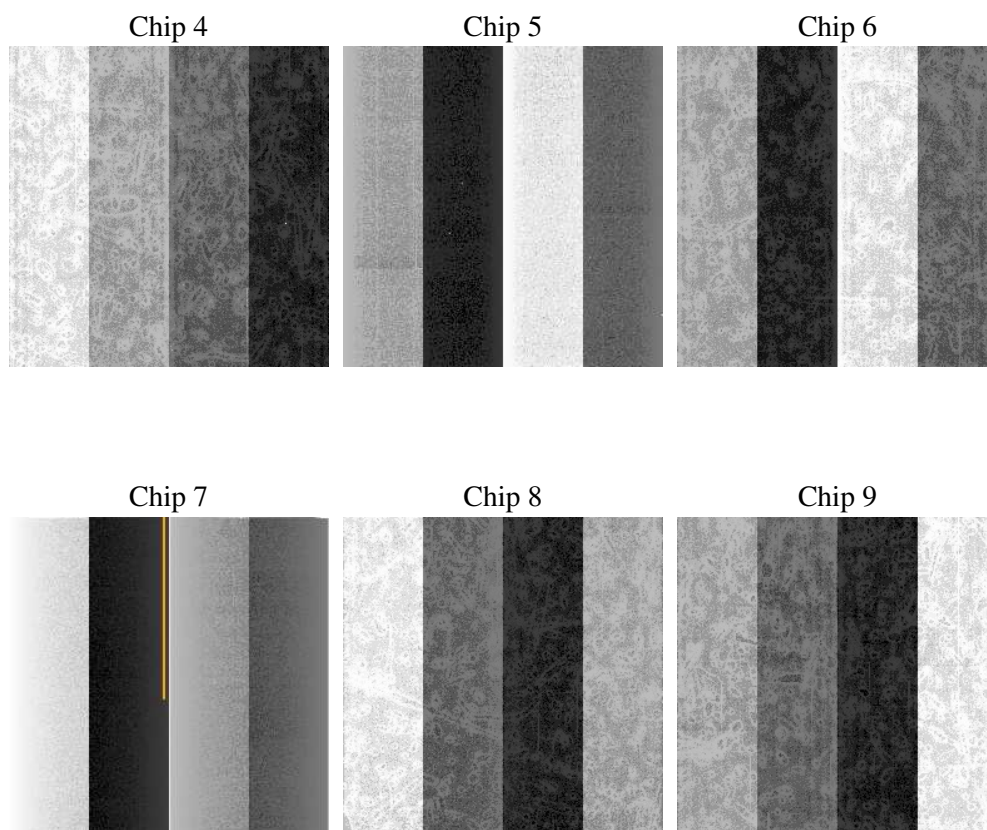
2 OBI

2.1 OBI

2.1.1 Images



2.1.2 Bias



2.1.3 Parameters

obi_num	1
ascdsver	7.6.7.2
caldbver	3.2.2
date	2006-06-02T22:35:47
revision	2

sched_exp_time	0.0
ontime	7801.1083112657
ontime4	4485.5806883872
ontime5	7801.1083112657
ontime6	4981.4529402852
ontime7	7801.1083112657
ontime8	5091.6467881203
ontime9	4835.6089383662
l1events	1415565

2.1.4 Events

	ccd 4	ccd 5	ccd 6	ccd 7	ccd 8	ccd 9
level 1 events	177598	297122	206319	319289	218570	196667
rejected events	34653	59593	35145	55431	40991	35555
rejected %	19%	20%	17%	17%	18%	18%

	ccd 4	ccd 5	ccd 6	ccd 7	ccd 8	ccd 9
grade 0 events	83525	27211	93611	44931	97494	89636
	47%	9%	45%	14%	44%	45%
grade 1 events	632	108	442	114	473	513
	0%	0%	0%	0%	0%	0%
grade 2 events	22172	111675	29439	81184	30845	27310
	12%	37%	14%	25%	14%	13%
grade 3 events	9598	8091	10474	18621	11496	10158
	5%	2%	5%	5%	5%	5%
grade 4 events	9421	7384	10632	18404	11402	10229
	5%	2%	5%	5%	5%	5%
grade 5 events	2079	6354	2392	6604	2814	2457
	1%	2%	1%	2%	1%	1%
grade 6 events	18338	83274	27126	100811	26442	23899
	10%	28%	13%	31%	12%	12%
grade 7 events	31833	53025	32203	48620	37604	32465
	17%	17%	15%	15%	17%	16%

2.2 Compared Parameters

Parameter	Planned	Actual	Parameter	Planned	Actual
Instrument	ACIS	ACIS	Obspar format version number	6	6
Detector	ACIS-456789	ACIS-456789	Obspar file type	PREDICTED	ACTUAL
Grating	NONE	NONE	Obspar update status	NONE	UPDATED
Data mode	FAINT	FAINT	On-chip summing requested	N	N
Observation mode	SECONDARY	SECONDARY	Subarray requested	NONE	NONE
Pointing RA	0	158.0698406978514	Alternating exposures requested	N	N
Pointing Dec	0	25.09175653044554	Primary exposure time	0.000000	3.2
Pointing Roll	0.0	163.8905175322524			
SIM focus pos (mm)	-0.684267	-0.7809083437167272			
SIM defocus (mm)	0	0.7524282956875696			
SIM translation stage pos (mm)	-190.132523	250.466033080201			
SIM translation stage offset (mm)	0	-0.01005468664627074			
Observation start time	193732743.528543	193732742.50383			
Observation start date	2004-02-21T06:39:04	2004-02-21T06:39:02			
Observation end time	193743231.329002	193743230.30429			
Observation end date	2004-02-21T09:33:51	2004-02-21T09:33:50			
Read mode	TIMED	TIMED			

2.3 Aspect

2.4 Star Slots

2.5 FID Slots

A Summary

A.1 Status

V&V Scientist	Jen Lauer
V&V Date (YYYY-MM-DD)	2006.06.04
V&V Edition	1
V&V Disposition and Status	OK
V&V Charge Time	7.79839997

A.2 Comments