

V&V Reference Report

L2 ASCDS Version : 7.6.7.2

Observation 60363 - L2 Version 001
Chandra X-Ray Center

L2 Processing Date : Jun 2 2006

Contents

1	Front	2
2	OBI	3
2.1	OBI	3
2.1.1	Images	3
2.1.2	Bias	3
2.1.3	Parameters	4
2.1.4	Events	4
2.2	Compared Parameters	5
2.3	Aspect	6
2.4	Star Slots	8
2.5	FID Slots	8
A	Summary	9
A.1	Status	9
A.2	Comments	9

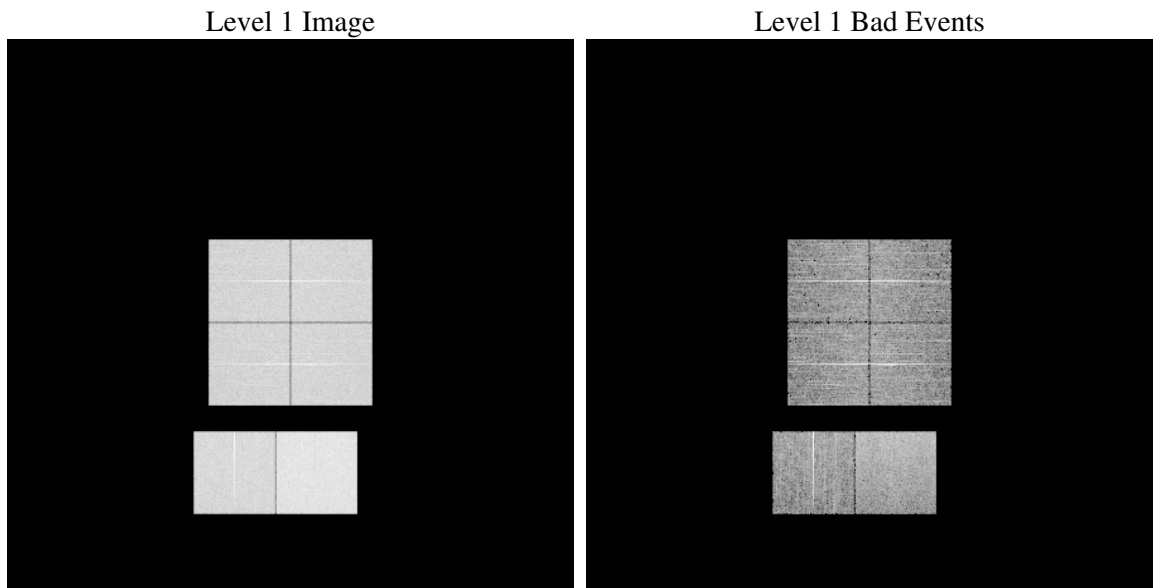
1 Front

seq_num	
obs_id	60363
title	ACIS-012367 diagnostics
observer	CHANDRA engineering request/realtime commanding
object	
dtcycle	0
cycle	P
ra_targ	0.0
dec_targ	0.0
ra_nom	129.416148499
dec_nom	11.376190250147
roll_nom	270.72403985399
revision	2
ontime	8462.7591823637
livetime	8355.5986299349
ontime0	5999.657951653
ontime1	6135.8198138475
ontime2	5743.7012176812
ontime3	5892.6234846711
ontime6	6369.2526129782
ontime7	8462.7591823637
l2events	1213835

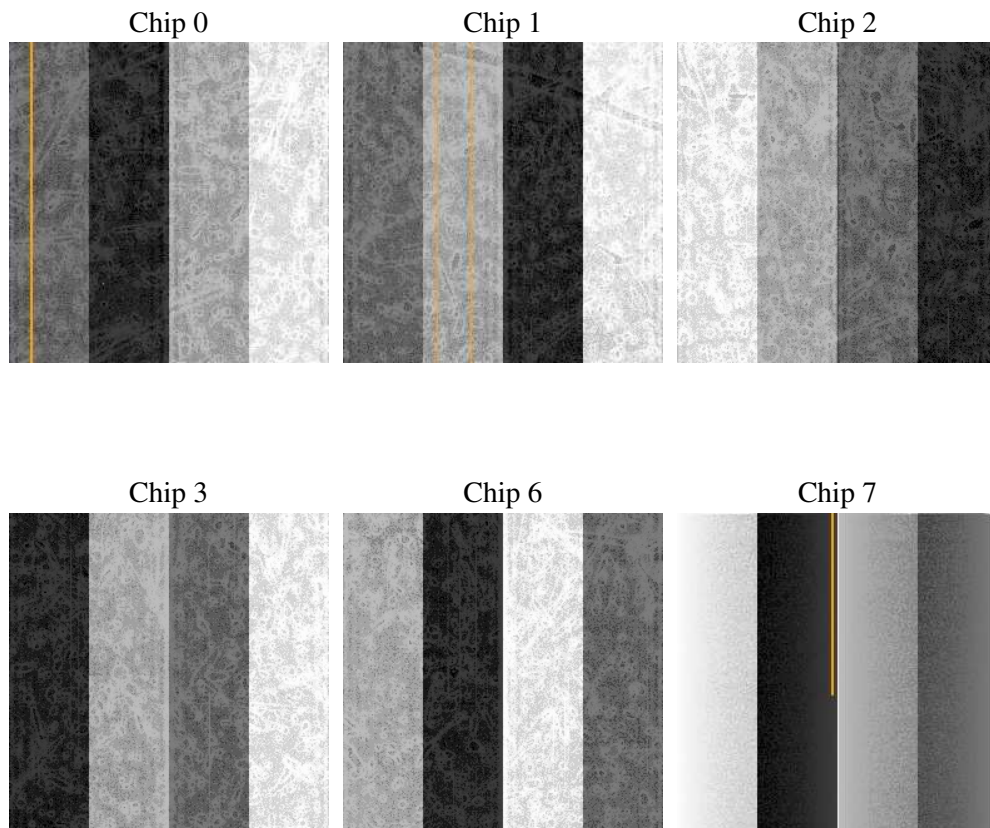
2 OBI

2.1 OBI

2.1.1 Images



2.1.2 Bias



2.1.3 Parameters

obi_num	1
ascdsver	7.6.7.2
caldbver	3.2.2
date	2006-06-02T22:44:16
revision	2

sched_exp_time	0.0
ontime	8465.5089203119
ontime0	6002.3666495979
ontime1	6138.4874717891
ontime2	5746.3278356194
ontime3	5895.4142626226
ontime6	6371.838190943
ontime7	8465.5089203119
l1events	1534633

2.1.4 Events

	ccd 0	ccd 1	ccd 2	ccd 3	ccd 6	ccd 7
level 1 events	233420	237682	228123	233503	259039	342866
rejected events	39844	39174	39742	40827	42995	59186
rejected %	17%	16%	17%	17%	16%	17%

	ccd 0	ccd 1	ccd 2	ccd 3	ccd 6	ccd 7
grade 0 events	106814	108848	105454	107971	117712	48771
	45%	45%	46%	46%	45%	14%
grade 1 events	594	543	617	642	584	125
	0%	0%	0%	0%	0%	0%
grade 2 events	33862	35338	31975	32956	37242	86616
	14%	14%	14%	14%	14%	25%
grade 3 events	12557	12672	12321	12564	13412	20647
	5%	5%	5%	5%	5%	6%
grade 4 events	12540	12853	12420	12607	13323	20361
	5%	5%	5%	5%	5%	5%
grade 5 events	2496	2804	2436	2688	2988	7299
	1%	1%	1%	1%	1%	2%
grade 6 events	27913	28903	26307	26686	34452	107400
	11%	12%	11%	11%	13%	31%
grade 7 events	36644	35721	36593	37389	39326	51647
	15%	15%	16%	16%	15%	15%

2.2 Compared Parameters

Parameter	Planned	Actual	Parameter	Planned	Actual
Instrument	ACIS	ACIS	Obspar format version number	6	6
Detector	ACIS-012367	ACIS-012367	Obspar file type	PREDICTED	ACTUAL
Grating	NONE	NONE	Obspar update status	NONE	UPDATED
Data mode	FAINT	FAINT	On-chip summing requested	N	N
Observation mode	SECONDARY	SECONDARY	Subarray requested	NONE	NONE
Pointing RA	0	129.4161484990022	Alternating exposures requested	N	N
Pointing Dec	0	11.37619025014674	Primary exposure time	0.000000	3.2
Pointing Roll	0.0	270.7240398539856			
SIM focus pos (mm)	-0.782348	-0.7809083437167272			
SIM defocus (mm)	0	0.7524282956875696			
SIM translation stage pos (mm)	-233.592463	250.466033080201			
SIM translation stage offset (mm)	0	-0.01005468664627074			
Observation start time	193768932.180127	193768931.15541			
Observation start date	2004-02-21T16:42:12	2004-02-21T16:42:11			
Observation end time	193790243.981059	193790242.95634			
Observation end date	2004-02-21T22:37:24	2004-02-21T22:37:22			
Read mode	TIMED	TIMED			

2.3 Aspect

2.4 Star Slots

2.5 FID Slots

A Summary

A.1 Status

V&V Scientist	Jen Lauer
V&V Date (YYYY-MM-DD)	2006.06.04
V&V Edition	1
V&V Disposition and Status	OK
V&V Charge Time	8.46275918

A.2 Comments