

# V&V Reference Report

## L2 ASCDS Version : 7.6.7.2

Observation 60358 - L2 Version <sub>e</sub>1  
Chandra X-Ray Center

L2 Processing Date : Jun 2 2006

## Contents

<b>1</b>	<b>Front</b>	<b>2</b>
<b>2</b>	<b>OBI Primary</b>	<b>3</b>
2.1	OBI . . . . .	3
2.1.1	Images . . . . .	3
2.1.2	Bias . . . . .	3
2.1.3	Parameters . . . . .	4
2.1.4	Events . . . . .	4
2.2	Compared Parameters . . . . .	5
2.3	Aspect . . . . .	6
2.4	Star Slots . . . . .	8
2.5	FID Slots . . . . .	8
<b>3</b>	<b>OBI Secondary</b>	<b>8</b>
3.1	OBI . . . . .	8
3.1.1	Images . . . . .	8
3.1.2	Bias . . . . .	8
3.1.3	Parameters . . . . .	9
3.1.4	Events . . . . .	9
<b>A</b>	<b>Summary</b>	<b>10</b>
A.1	Status . . . . .	10
A.2	Comments . . . . .	10

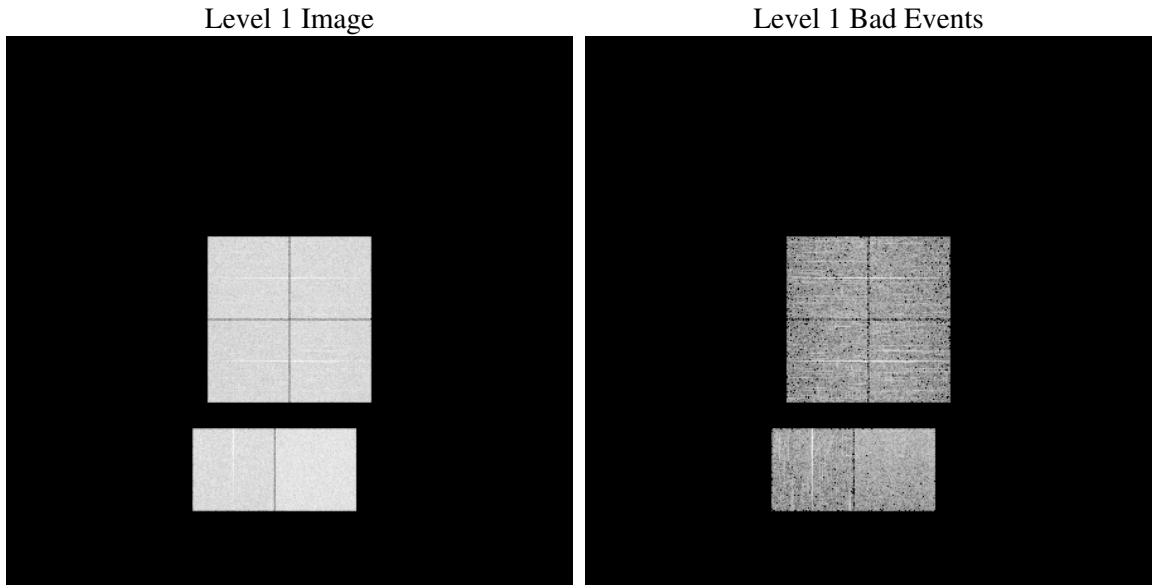
# 1 Front

seq_num	&#160
obs_id	60358
title	ACIS-012367 diagnostics
observer	CHANDRA engineering request/realtime commanding
object	&#160
dtcycle	0
cycle	P
ra_targ	0.0
dec_targ	0.0
ra_nom	172.97741807133
dec_nom	15.018486261057
roll_nom	106.82860449866
revision	2
ontime	4519.7254058421
livetime	4473.8239718905
ontime0	3667.2301251292
ontime1	3691.4353251755
ontime2	3432.767724961
ontime3	3594.3682850897
ontime6	3703.3942851722
ontime7	4519.7254058421
l2events	704908

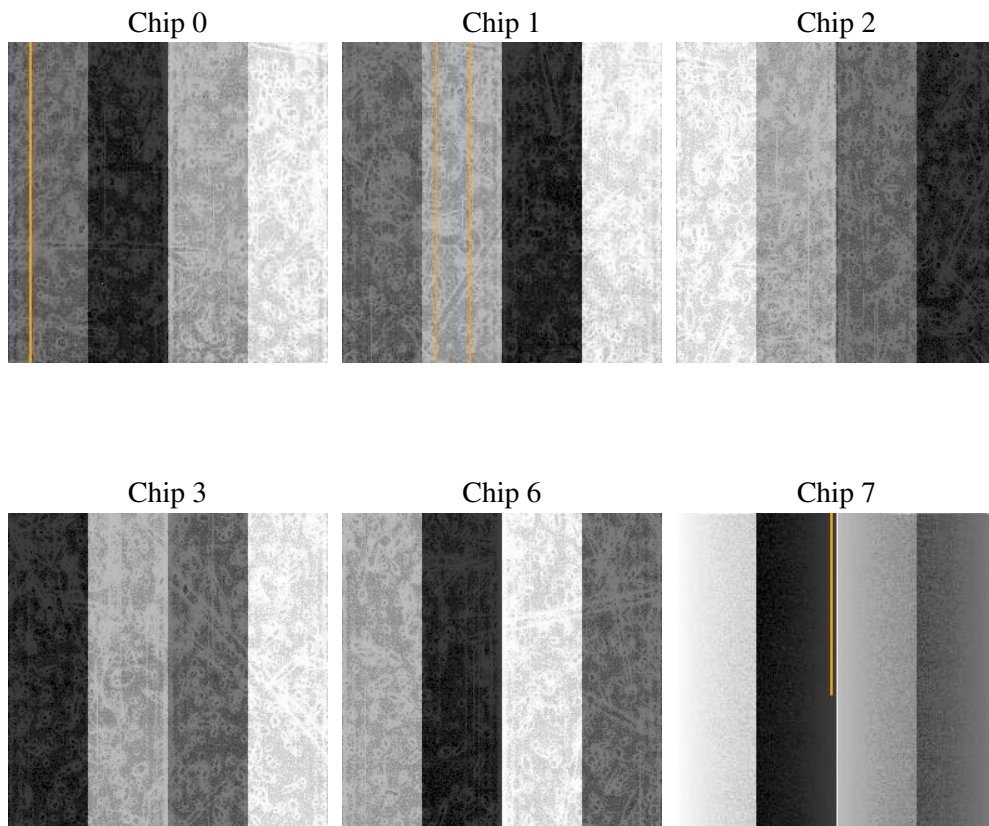
## 2 OBI Primary

### 2.1 OBI

#### 2.1.1 Images



#### 2.1.2 Bias



### 2.1.3 Parameters

obi_num	0
ascdsver	7.6.7.2
caldsver	3.2.2
date	2006-06-02T22:58:07
revision	2

sched_exp_time	0.0
ontime	4586.5804037452
ontime0	3721.797843039
ontime1	3746.0440830588
ontime2	3479.3354428411
ontime3	3640.977042973
ontime6	3766.2492830753
ontime7	4586.5804037452
l1events	893489

### 2.1.4 Events

	ccd 0	ccd 1	ccd 2	ccd 3	ccd 6	ccd 7
level 1 events	142229	142196	134333	141855	151067	181809
rejected events	24591	23049	23643	25279	26322	31045
rejected %	17%	16%	17%	17%	17%	17%

	ccd 0	ccd 1	ccd 2	ccd 3	ccd 6	ccd 7
grade 0 events	65769	65935	62824	66334	69003	27227
	46%	46%	46%	46%	45%	14%
grade 1 events	381	358	425	414	391	63
	0%	0%	0%	0%	0%	0%
grade 2 events	20703	21658	19014	20174	22004	46696
	14%	15%	14%	14%	14%	25%
grade 3 events	7622	7747	7365	7715	7914	11198
	5%	5%	5%	5%	5%	6%
grade 4 events	7751	7762	7308	7715	7847	10985
	5%	5%	5%	5%	5%	6%
grade 5 events	1577	1626	1465	1629	1791	3735
	1%	1%	1%	1%	1%	2%
grade 6 events	17589	17856	15778	16211	20135	57016
	12%	12%	11%	11%	13%	31%
grade 7 events	20837	19254	20154	21663	21982	24889
	14%	13%	15%	15%	14%	13%

## 2.2 Compared Parameters

Parameter	Planned	Actual	Parameter	Planned	Actual
Instrument	ACIS	ACIS	Obspar format version number	6	6
Detector	ACIS-012367	ACIS-012367	Obspar file type	PREDICTED	ACTUAL
Grating	NONE	NONE	Obspar update status	NONE	UPDATED
Data mode	FAINT	FAINT	On-chip summing requested	N	N
Observation mode	SECONDARY	SECONDARY	Subarray requested	NONE	NONE
Pointing RA	0	172.9774180713343	Alternating exposures requested	N	Y
Pointing Dec	0	15.01848626105685	Primary exposure time	0.000000	4
Pointing Roll	0.0	106.8286044986595	Secondary exposure time	N/A	3.2
SIM focus pos (mm)	-0.782348	-0.6828225247311905	Duty cycle	N/A	1
SIM defocus (mm)	0	0.8505141146731063			
SIM translation stage pos (mm)	-233.592463	250.466033080201			
SIM translation stage offset (mm)	0	-0.01005468664627074			
Observation start time	193995902.040065	193995901.01534			
Observation start date	2004-02-24T07:45:02	2004-02-24T07:45:01			
Observation end time	194017798.091023	194017797.0663			
Observation end date	2004-02-24T13:49:58	2004-02-24T13:49:57			
Read mode	TIMED	TIMED			

## 2.3 Aspect



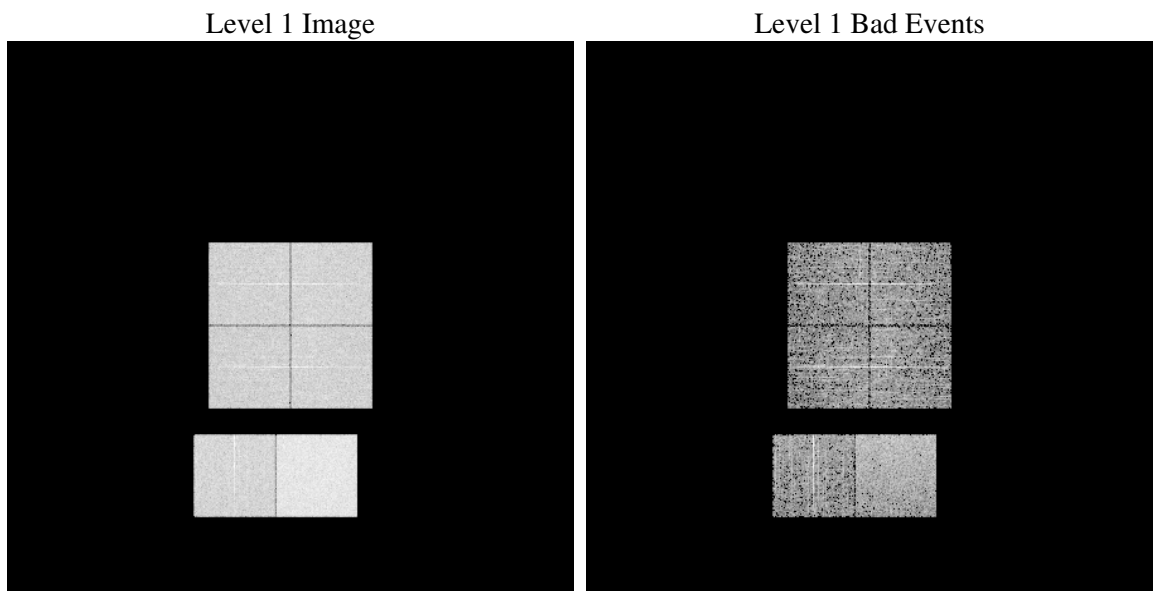
## 2.4 Star Slots

## 2.5 FID Slots

# 3 OBI Secondary

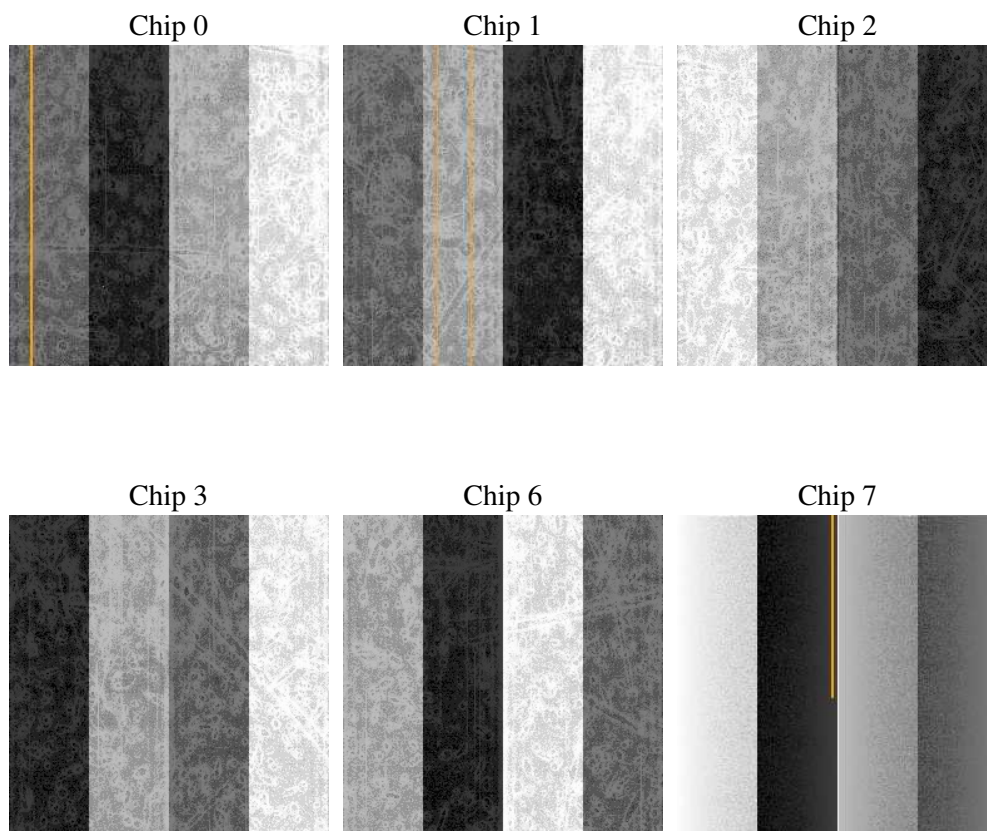
## 3.1 OBI

### 3.1.1 Images



### 3.1.2 Bias





### 3.1.3 Parameters

obi_num	0
ascdsver	7.6.7.2
caldsver	3.2.2
date	2006-06-02T22:56:36
revision	2

sched_exp_time	0.0
ontime	3678.5803902149
ontime0	2340.0308737755
ontime1	2430.7799935341
ontime2	2194.1840741634
ontime3	2304.3794338703
ontime6	2414.5747935772
ontime7	3678.5803902149
l1events	610697

### 3.1.4 Events

	ccd 0	ccd 1	ccd 2	ccd 3	ccd 6	ccd 7
level 1 events	90582	94174	86925	91292	99063	148661
rejected events	15792	16624	15850	17077	17960	26989
rejected %	17%	17%	18%	18%	18%	18%

	ccd 0	ccd 1	ccd 2	ccd 3	ccd 6	ccd 7
grade 0 events	41679	43218	40384	42398	44721	21961
	46%	45%	46%	46%	45%	14%
grade 1 events	233	221	225	221	240	60
	0%	0%	0%	0%	0%	0%
grade 2 events	13416	13838	12127	12955	14147	37332
	14%	14%	13%	14%	14%	25%
grade 3 events	4828	4985	4761	4943	5228	9005
	5%	5%	5%	5%	5%	6%
grade 4 events	4900	5163	4614	4977	5148	8772
	5%	5%	5%	5%	5%	5%
grade 5 events	980	1131	971	1049	1110	3081
	1%	1%	1%	1%	1%	2%
grade 6 events	10855	11595	9921	10309	12998	46446
	11%	12%	11%	11%	13%	31%
grade 7 events	13691	14023	13922	14440	15471	22004
	15%	14%	16%	15%	15%	14%

## A Summary

### A.1 Status

V&V Scientist	Jen Lauer
V&V Date (YYYY-MM-DD)	2006.06.04
V&V Edition	1
V&V Disposition and Status	OK
V&V Charge Time	8.1440881

### A.2 Comments