

V&V Reference Report

L2 ASCDS Version : 7.6.7.2

Observation 60357 - L2 Version 001
Chandra X-Ray Center

L2 Processing Date : May 31 2006

Contents

1	Front	2
2	OBI	3
2.1	OBI	3
2.1.1	Images	3
2.1.2	Bias	3
2.1.3	Parameters	4
2.1.4	Events	4
2.2	Compared Parameters	5
2.3	Aspect	6
2.4	Star Slots	8
2.5	FID Slots	8
A	Summary	9
A.1	Status	9
A.2	Comments	9

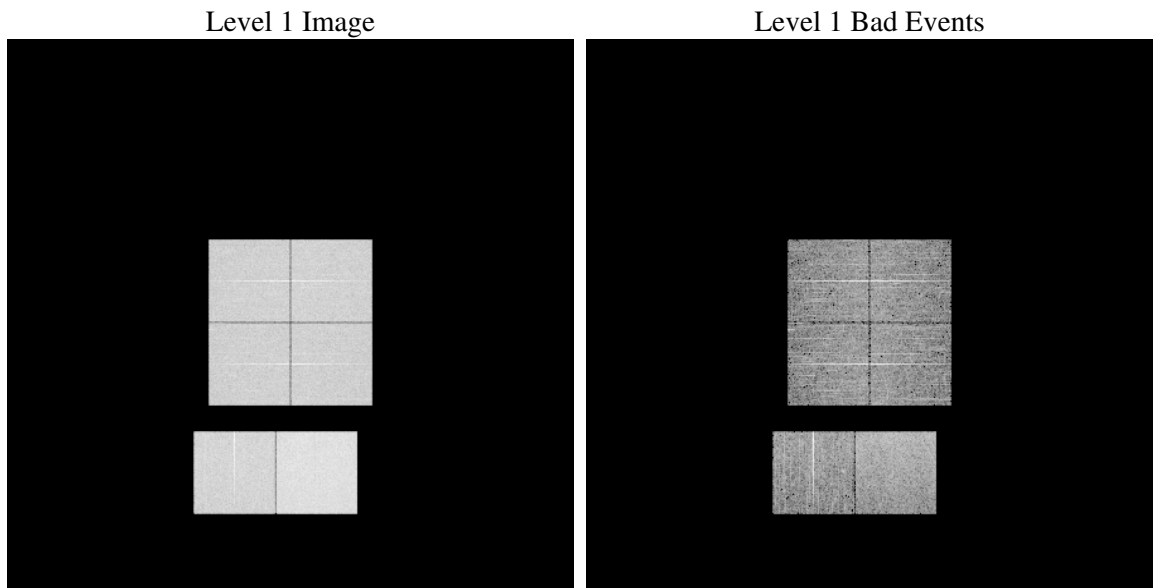
1 Front

seq_num	
obs_id	60357
title	ACIS-012367 diagnostics
observer	CHANDRA engineering request/realtime commanding
object	
dtcycle	0
cycle	P
ra_targ	0.0
dec_targ	0.0
ra_nom	131.02933914296
dec_nom	-19.00692269978
roll_nom	313.03917620706
revision	2
ontime	7801.5999709368
livetime	7702.8114145452
ontime0	5555.6011972427
ontime1	5724.1320829093
ontime2	5383.8286753595
ontime3	5352.4184664488
ontime6	5912.1088387966
ontime7	7801.5999709368
l2events	1120471

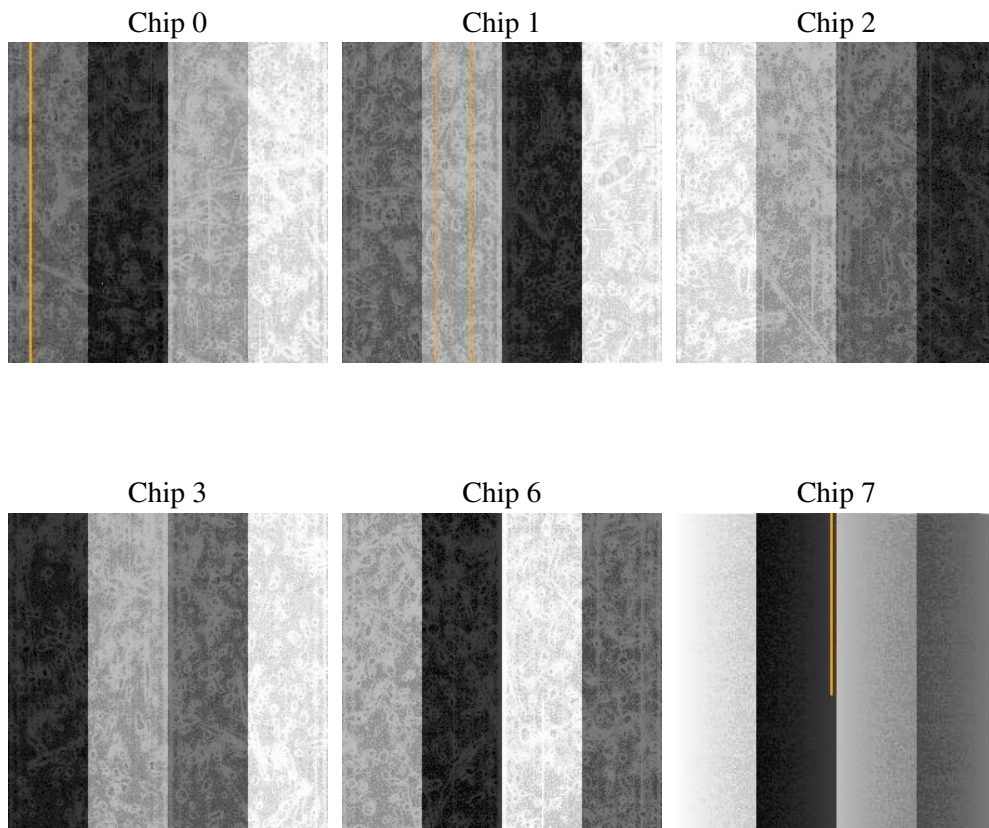
2 OBI

2.1 OBI

2.1.1 Images



2.1.2 Bias



2.1.3 Parameters

obi_num	0
ascdsver	7.6.7.2
caldsver	3.2.2
date	2006-05-31T19:48:12
revision	2

sched_exp_time	0.0
ontime	7804.3480215073
ontime0	5558.3492478132
ontime1	5726.8801334798
ontime2	5386.57672593
ontime3	5354.1665860116
ontime6	5914.8568893671
ontime7	7804.3480215073
l1events	1417543

2.1.4 Events

	ccd 0	ccd 1	ccd 2	ccd 3	ccd 6	ccd 7
level 1 events	215481	221438	211854	211707	241781	315282
rejected events	36498	36496	36914	36862	41467	54051
rejected %	16%	16%	17%	17%	17%	17%

	ccd 0	ccd 1	ccd 2	ccd 3	ccd 6	ccd 7
grade 0 events	98539	101681	98264	98220	109500	46049
	45%	45%	46%	46%	45%	14%
grade 1 events	566	456	582	546	530	124
	0%	0%	0%	0%	0%	0%
grade 2 events	31193	33196	29193	29641	34551	79191
	14%	14%	13%	14%	14%	25%
grade 3 events	11633	11636	11460	11353	12275	19001
	5%	5%	5%	5%	5%	6%
grade 4 events	11663	11636	11426	11434	12276	18726
	5%	5%	5%	5%	5%	5%
grade 5 events	2424	2471	2178	2433	2720	6610
	1%	1%	1%	1%	1%	2%
grade 6 events	26046	26887	24597	24286	31712	98375
	12%	12%	11%	11%	13%	31%
grade 7 events	33417	33475	34154	33794	38217	47206
	15%	15%	16%	15%	15%	14%

2.2 Compared Parameters

Parameter	Planned	Actual	Parameter	Planned	Actual
Instrument	ACIS	ACIS	Obspar format version number	6	6
Detector	ACIS-012367	ACIS-012367	Obspar file type	PREDICTED	ACTUAL
Grating	NONE	NONE	Obspar update status	NONE	UPDATED
Data mode	FAINT	FAINT	On-chip summing requested	N	N
Observation mode	SECONDARY	SECONDARY	Subarray requested	NONE	NONE
Pointing RA	0	131.0293391429633	Alternating exposures requested	N	N
Pointing Dec	0	-19.00692269977962	Primary exposure time	0.000000	3.2
Pointing Roll	0.0	313.0391762070629			
SIM focus pos (mm)	-0.782348	-0.6828225247311905			
SIM defocus (mm)	0	0.8505141146731063			
SIM translation stage pos (mm)	-233.592463	250.4635187648994			
SIM translation stage offset (mm)	0	-0.007540371344731511			
Observation start time	194182169.14822	194182168.1235			
Observation start date	2004-02-26T11:29:29	2004-02-26T11:29:28			
Observation end time	194202170.999096	194202169.97437			
Observation end date	2004-02-26T17:02:51	2004-02-26T17:02:49			
Read mode	TIMED	TIMED			

2.3 Aspect

2.4 Star Slots

2.5 FID Slots

A Summary

A.1 Status

V&V Scientist	Jen Lauer
V&V Date (YYYY-MM-DD)	2006.06.01
V&V Edition	1
V&V Disposition and Status	OK
V&V Charge Time	7.80159997

A.2 Comments