

V&V Reference Report

L2 ASCDS Version : 7.6.7.2

Observation 60355 - L2 Version 001
Chandra X-Ray Center

L2 Processing Date : May 31 2006

Contents

1	Front	2
2	OBI	3
2.1	OBI	3
2.1.1	Images	3
2.1.2	Bias	3
2.1.3	Parameters	4
2.1.4	Events	4
2.2	Compared Parameters	5
2.3	Aspect	6
2.4	Star Slots	8
2.5	FID Slots	8
A	Summary	9
A.1	Status	9
A.2	Comments	9

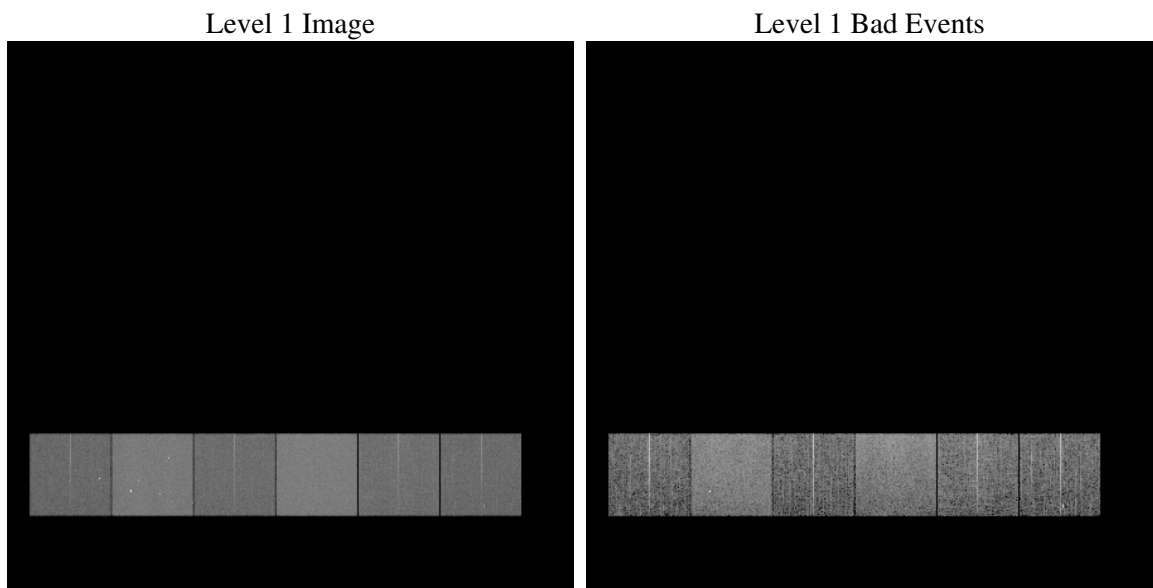
1 Front

seq_num	
obs_id	60355
title	ACIS-456789 diagnostics
observer	CHANDRA engineering request/realtime commanding
object	
dtcycle	0
cycle	P
ra_targ	0.0
dec_targ	0.0
ra_nom	131.02924664951
dec_nom	-19.007270213683
roll_nom	312.37555825962
revision	2
ontime	8460.5606142282
livetime	8353.4279013929
ontime4	5093.3065039814
ontime5	8460.6016542315
ontime6	5498.3890508413
ontime7	8460.5606142282
ontime8	5602.1822807491
ontime9	5297.3246178627
l2events	1186381

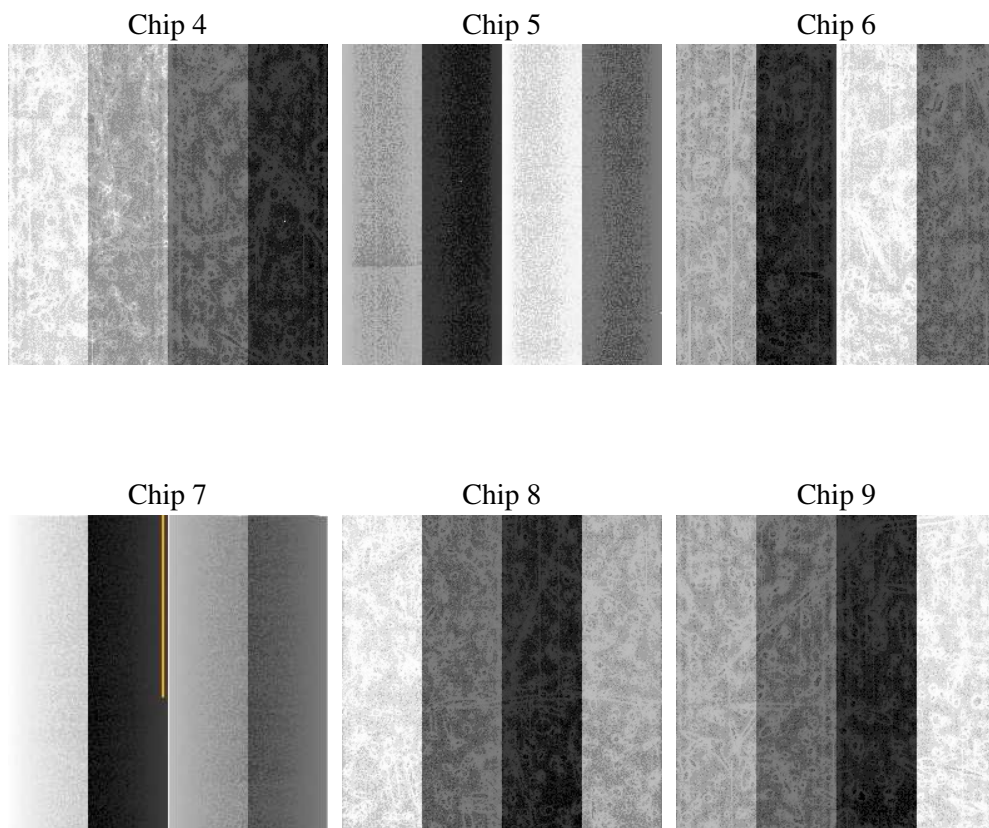
2 OBI

2.1 OBI

2.1.1 Images



2.1.2 Bias



2.1.3 Parameters

obi_num	0
ascdsver	7.6.7.2
caldbver	3.2.2
date	2006-05-31T19:45:41
revision	2

sched_exp_time	0.0
ontime	8462.2660904527
ontime4	5094.8888601959
ontime5	8462.2660904527
ontime6	5500.0124470592
ontime7	8462.2660904527
ontime8	5603.7235969901
ontime9	5299.0711340904
l1events	1533368

2.1.4 Events

	ccd 4	ccd 5	ccd 6	ccd 7	ccd 8	ccd 9
level 1 events	198763	319906	223551	341922	238413	210813
rejected events	36394	62691	37594	57893	44185	38237
rejected %	18%	19%	16%	16%	18%	18%

	ccd 4	ccd 5	ccd 6	ccd 7	ccd 8	ccd 9
grade 0 events	94503	31230	101456	50008	106260	95114
	47%	9%	45%	14%	44%	45%
grade 1 events	679	106	508	126	502	509
	0%	0%	0%	0%	0%	0%
grade 2 events	25937	120228	32142	85753	33979	29766
	13%	37%	14%	25%	14%	14%
grade 3 events	10780	8501	11612	20713	12567	11236
	5%	2%	5%	6%	5%	5%
grade 4 events	10719	8472	11640	20447	12551	10873
	5%	2%	5%	5%	5%	5%
grade 5 events	2208	6447	2508	7055	3040	2634
	1%	2%	1%	2%	1%	1%
grade 6 events	20430	88871	29215	107216	28871	25697
	10%	27%	13%	31%	12%	12%
grade 7 events	33507	56051	34470	50604	40643	34984
	16%	17%	15%	14%	17%	16%

2.2 Compared Parameters

Parameter	Planned	Actual	Parameter	Planned	Actual
Instrument	ACIS	ACIS	Obspar format version number	6	6
Detector	ACIS-456789	ACIS-456789	Obspar file type	PREDICTED	ACTUAL
Grating	NONE	NONE	Obspar update status	NONE	UPDATED
Data mode	FAINT	FAINT	On-chip summing requested	N	N
Observation mode	SECONDARY	SECONDARY	Subarray requested	NONE	NONE
Pointing RA	0	131.0292466495139	Alternating exposures requested	N	N
Pointing Dec	0	-19.00727021368294	Primary exposure time	0.000000	3.2
Pointing Roll	0.0	312.3755582596247			
SIM focus pos (mm)	-0.684267	-0.6828225247311905			
SIM defocus (mm)	0	0.8505141146731063			
SIM translation stage pos (mm)	-190.132523	250.4635187648994			
SIM translation stage offset (mm)	0	-0.007540371344731511			
Observation start time	194220951.049919	194220950.0252			
Observation start date	2004-02-26T22:15:51	2004-02-26T22:15:50			
Observation end time	194243870.050922	194243869.0262			
Observation end date	2004-02-27T04:37:50	2004-02-27T04:37:49			
Read mode	TIMED	TIMED			

2.3 Aspect

2.4 Star Slots

2.5 FID Slots

A Summary

A.1 Status

V&V Scientist	Jen Lauer
V&V Date (YYYY-MM-DD)	2006.06.01
V&V Edition	1
V&V Disposition and Status	OK
V&V Charge Time	8.46056061

A.2 Comments