

V&V Reference Report

L2 ASCDS Version : 7.6.7.2

Observation 60354 - L2 Version 001
Chandra X-Ray Center

L2 Processing Date : May 31 2006

Contents

1	Front	2
2	OBI	3
2.1	OBI	3
2.1.1	Images	3
2.1.2	Bias	3
2.1.3	Parameters	4
2.1.4	Events	4
2.2	Compared Parameters	5
2.3	Aspect	6
2.4	Star Slots	8
2.5	FID Slots	8
A	Summary	9
A.1	Status	9
A.2	Comments	9

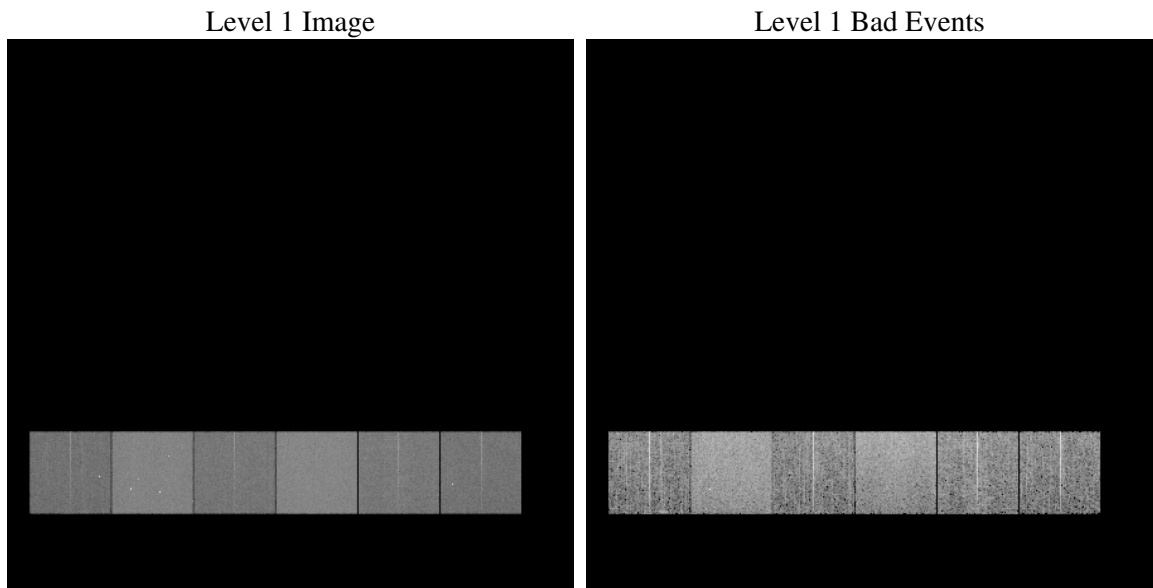
1 Front

seq_num	
obs_id	60354
title	ACIS-456789 diagnostics
observer	CHANDRA engineering request/realtime commanding
object	
dtcycle	0
cycle	P
ra_targ	0.0
dec_targ	0.0
ra_nom	158.02718095032
dec_nom	-5.990646893871
roll_nom	346.15719804891
revision	2
ontime	7798.3999709487
livetime	7699.6519348838
ontime4	4648.1615474522
ontime5	7798.3999709487
ontime6	5082.4551738501
ontime7	7798.3999709487
ontime8	5234.7809095681
ontime9	4891.2361524999
l2events	1098437

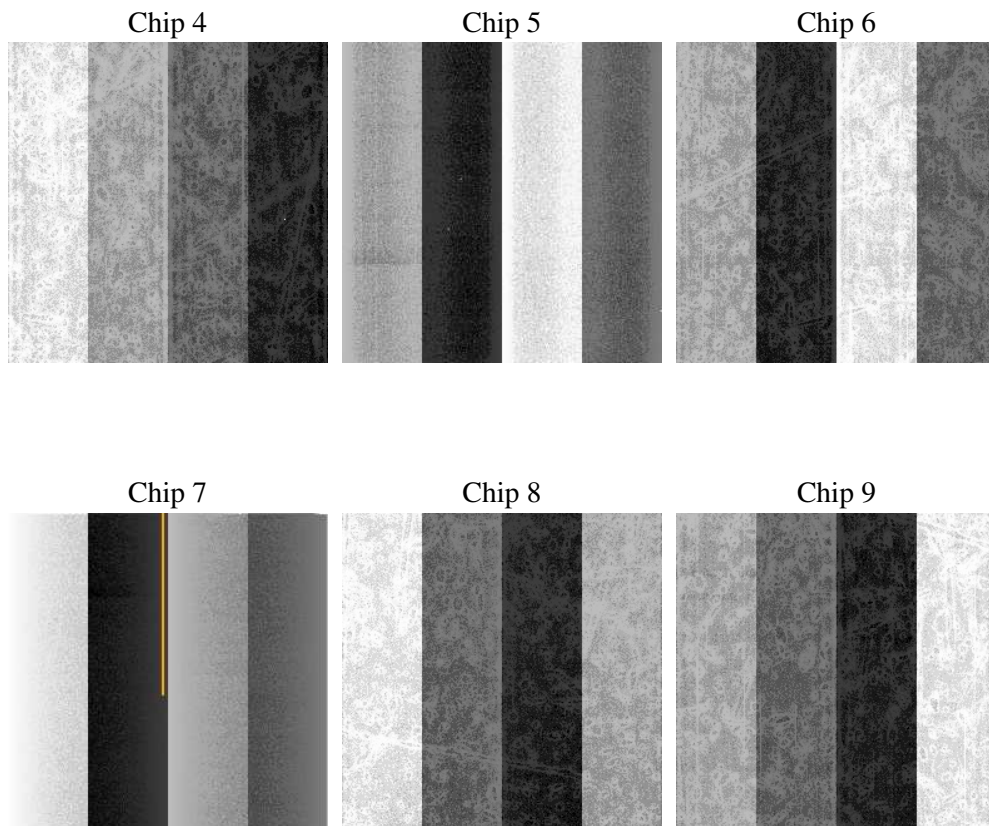
2 OBI

2.1 OBI

2.1.1 Images



2.1.2 Bias



2.1.3 Parameters

obi_num	0
ascdsver	7.6.7.2
caldbver	3.2.2
date	2006-05-31T20:09:08
revision	2

sched_exp_time	0.0
ontime	7801.1112214923
ontime4	4650.8727979958
ontime5	7801.1112214923
ontime6	5085.1664243937
ontime7	7801.1112214923
ontime8	5237.4921601117
ontime9	4893.9474030435
l1events	1416026

2.1.4 Events

	ccd 4	ccd 5	ccd 6	ccd 7	ccd 8	ccd 9
level 1 events	181957	295048	208252	314053	222217	194499
rejected events	34035	56978	35045	52519	39949	33875
rejected %	18%	19%	16%	16%	17%	17%

	ccd 4	ccd 5	ccd 6	ccd 7	ccd 8	ccd 9
grade 0 events	86592	30718	94364	46529	99853	89455
	47%	10%	45%	14%	44%	45%
grade 1 events	597	283	479	140	516	444
	0%	0%	0%	0%	0%	0%
grade 2 events	23019	110583	29889	79092	31735	27196
	12%	37%	14%	25%	14%	13%
grade 3 events	9976	7948	10532	19284	11996	10037
	5%	2%	5%	6%	5%	5%
grade 4 events	9645	7655	10980	18638	11664	10158
	5%	2%	5%	5%	5%	5%
grade 5 events	2051	5909	2385	6449	2833	2393
	1%	2%	1%	2%	1%	1%
grade 6 events	18690	81166	27442	97991	27020	23778
	10%	27%	13%	31%	12%	12%
grade 7 events	31387	50786	32181	45930	36600	31038
	17%	17%	15%	14%	16%	15%

2.2 Compared Parameters

Parameter	Planned	Actual	Parameter	Planned	Actual
Instrument	ACIS	ACIS	Obspar format version number	6	6
Detector	ACIS-456789	ACIS-456789	Obspar file type	PREDICTED	ACTUAL
Grating	NONE	NONE	Obspar update status	NONE	UPDATED
Data mode	FAINT	FAINT	On-chip summing requested	N	N
Observation mode	SECONDARY	SECONDARY	Subarray requested	NONE	NONE
Pointing RA	0	158.0271809503238	Alternating exposures requested	N	N
Pointing Dec	0	-5.990646893870997	Primary exposure time	0.000000	3.2
Pointing Roll	0.0	346.1571980489141			
SIM focus pos (mm)	-0.684267	-0.6828225247311905			
SIM defocus (mm)	0	0.8505141146731063			
SIM translation stage pos (mm)	-190.132523	250.4635187648994			
SIM translation stage offset (mm)	0	-0.007540371344731511			
Observation start time	194415895.80844	194415894.78373			
Observation start date	2004-02-29T04:24:56	2004-02-29T04:24:54			
Observation end time	194431471.709122	194431470.68442			
Observation end date	2004-02-29T08:44:32	2004-02-29T08:44:30			
Read mode	TIMED	TIMED			

2.3 Aspect

2.4 Star Slots

2.5 FID Slots

A Summary

A.1 Status

V&V Scientist	Jen Lauer
V&V Date (YYYY-MM-DD)	2006.06.01
V&V Edition	1
V&V Disposition and Status	OK
V&V Charge Time	7.79839997

A.2 Comments