

V&V Reference Report

L2 ASCDS Version : 8.4.5

Observation 60334 - L2 Version 3
Chandra X-Ray Center

L2 Processing Date : Nov 13 2012

Contents

1	Front	2
2	OBI	3
2.1	OBI	3
2.1.1	Images	3
2.1.2	Bias	3
2.1.3	Parameters	4
2.1.4	Events	4
2.2	Compared Parameters	5
2.3	Star Slots	6
2.4	FID Slots	6
A	Summary	7
A.1	Status	7
A.2	Comments	7

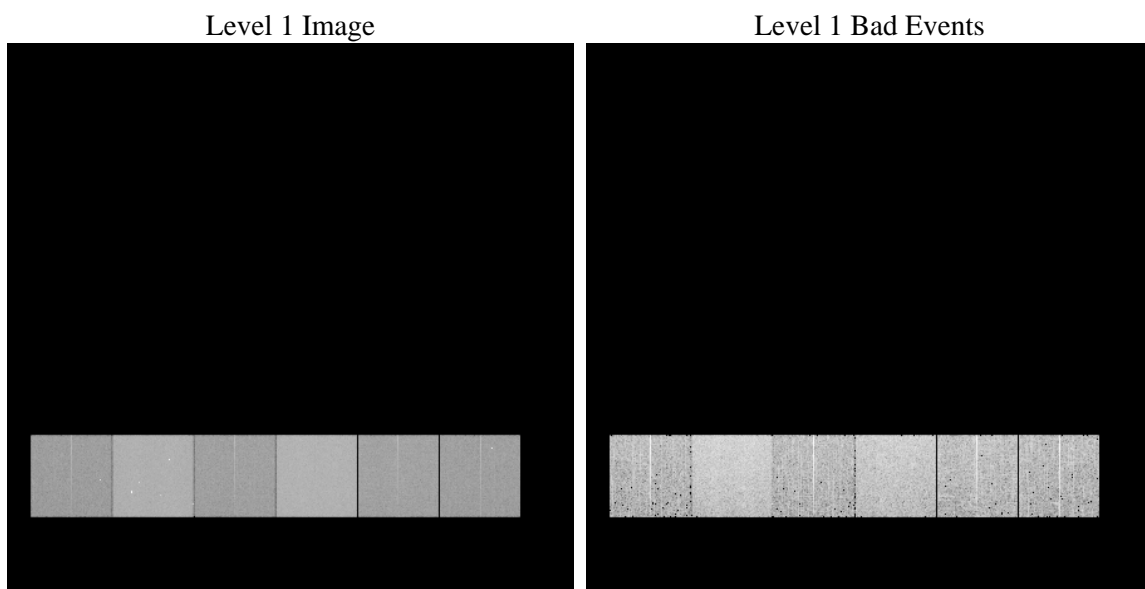
1 Front

seq_num	 	Sequence number
obs_id	60334	Observation id
title	ACIS-456789 diagnostics	Proposal title
observer	CHANDRA engineering request/realtime commanding	Principal investig
object	 	Source name
dtcycle	0	
cycle	P	events from which exps? Prim/Second/Both
ra_targ	0.0	Observer's specified target RA [deg]
dec_targ	0.0	Observer's specified target Dec [deg]
ra_nom	164.00656903357	Nominal RA [deg]
dec_nom	5.9721838500589	Nominal Dec [deg]
roll_nom	250.33636515847	Nominal Roll [deg]
revision	3	Processing version of data
ontime	7798.3522279263	Sum of GTIs [s]
livetime	7699.6047964123	Livetime [s]
ontime4	3792.3675855696	Sum of GTIs [s]
ontime5	7798.311187923	Sum of GTIs [s]
ontime6	4041.5647004247	Sum of GTIs [s]
ontime7	7798.3522279263	Sum of GTIs [s]
ontime8	4190.9696586728	Sum of GTIs [s]
ontime9	3931.3704053462	Sum of GTIs [s]
l2events	1118746	Number of level 2 events

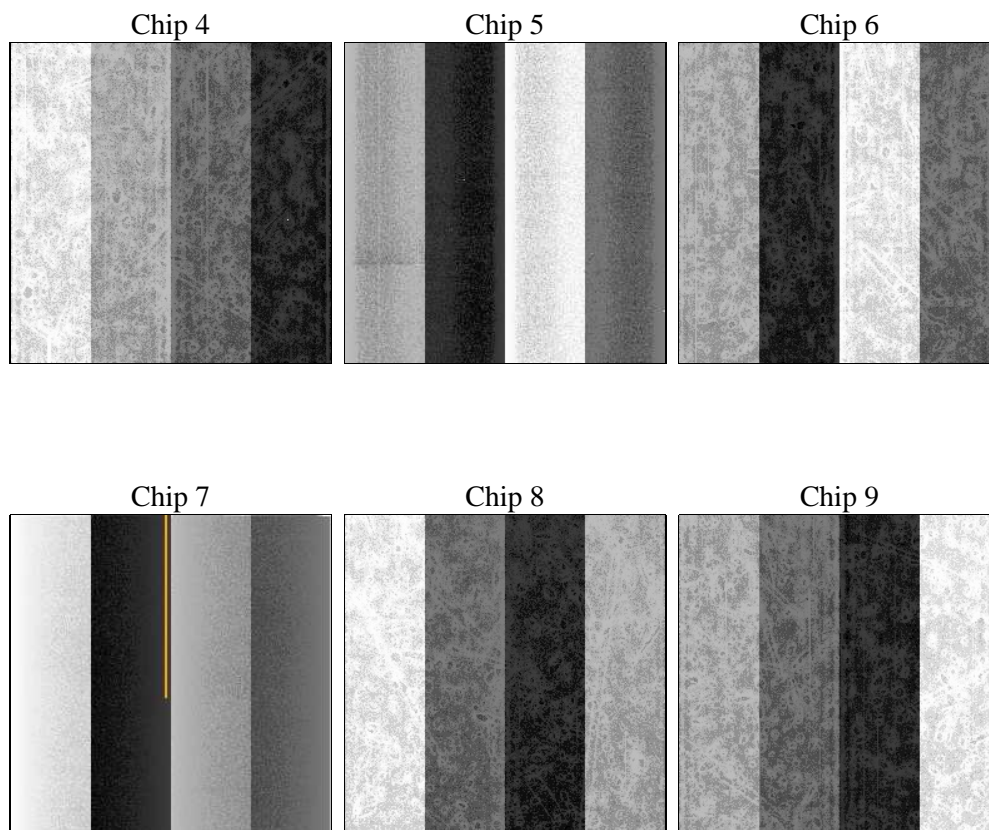
2 OBI

2.1 OBI

2.1.1 Images



2.1.2 Bias



2.1.3 Parameters

obi_num	0	Obi number	sched_exp_time	0.0	[s] Scheduled observation exposure time
ascdsver	8.4.5	Processing system revision	ontime	7798.3522279263	Sum of GTIs [s]
caldbver	4.5.2	 	ontime4	3792.3675855696	Sum of GTIs [s]
date	2012-11-13T19:58:01	Date and time of file creation	ontime5	7798.311187923	Sum of GTIs [s]
revision	3	Processing version of data	ontime6	4041.5647004247	Sum of GTIs [s]
			ontime7	7798.3522279263	Sum of GTIs [s]
			ontime8	4190.9696586728	Sum of GTIs [s]
			ontime9	3931.3704053462	Sum of GTIs [s]
			l1events	1419846	Number of level 1 events

2.1.4 Events

	ccd 4	ccd 5	ccd 6	ccd 7	ccd 8	ccd 9		ccd 4	ccd 5	ccd 6	ccd 7	ccd 8	ccd 9
level 1 events	169024	327306	187577	352835	202420	180684	grade 0 events	78406	61413	82014	76223	88701	80450
rejected events	32552	55925	33714	48213	37095	33211		46%	18%	43%	21%	43%	44%
rejected %	19%	17%	17%	13%	18%	18%	grade 1 events	662	219	462	241	536	562
								0%	0%	0%	0%	0%	0%
							grade 2 events	21459	97853	26573	66547	28538	24858
								12%	29%	14%	18%	14%	13%
							grade 3 events	9073	15927	9525	29542	10594	9236
								5%	4%	5%	8%	5%	5%
							grade 4 events	8898	15668	9363	29154	10726	9048
								5%	4%	4%	8%	5%	5%
							grade 5 events	1967	9056	2182	8360	2586	2119
								1%	2%	1%	2%	1%	1%
							grade 6 events	18775	80626	26388	103277	26883	23881
								11%	24%	14%	29%	13%	13%
							grade 7 events	29784	46544	31070	39491	33856	30530
								17%	14%	16%	11%	16%	16%

2.2 Compared Parameters

Parameter	Planned	Actual	Parameter	Planned	Actual
Instrument	ACIS	ACIS	Obspar format version number	7	7
Detector	ACIS-456789	ACIS-456789	Obspar file type	PREDICTED	ACTUAL
Grating	NONE	NONE	Obspar update status	NONE	UPDATED
Data mode	FAINT	FAINT	On-chip summing requested	N	N
Observation mode	SECONDARY	SECONDARY	Subarray requested	NONE	NONE
[deg] Pointing RA	0	164.006569033565	Alternating exposures requested	N	N
[deg] Pointing Dec	0	5.972183850058873	[s] Primary exposure time	0.000000	3.2
[deg] Pointing Roll	0.0	250.3363651584699			
[mm] SIM focus pos	-0.684267	-0.6828225247311905			
[mm] SIM defocus	0	0.8505141146731063			
[mm] SIM translation stage pos	-190.132523	250.4635187648994			
[mm] SIM translation stage offset	0	-0.007540371344731511			
[s] Observation start time (MET)	196014881.528855	196014880.50386			
Observation start date	2004-03-18T16:34:42	2004-03-18T16:34:40			
[s] Observation end time (MET)	196030188.879526	196030187.85453			
Observation end date	2004-03-18T20:49:49	2004-03-18T20:49:47			
Read mode	TIMED	TIMED			

2.3 Star Slots

2.4 FID Slots

A Summary

A.1 Status

V&V Scientist	Beth Sundheim
V&V Date (YYYY-MM-DD)	2012.12.20
V&V Edition	1
V&V Disposition and Status	OK
V&V Charge Time	7.7983522279263

A.2 Comments