

V&V Reference Report

L2 ASCDS Version : 7.6.7.2

Observation 60334 - L2 Version 001
Chandra X-Ray Center

L2 Processing Date : May 29 2006

Contents

1	Front	2
2	OBI	3
2.1	OBI	3
2.1.1	Images	3
2.1.2	Bias	3
2.1.3	Parameters	4
2.1.4	Events	4
2.2	Compared Parameters	5
2.3	Aspect	6
2.4	Star Slots	8
2.5	FID Slots	8
A	Summary	9
A.1	Status	9
A.2	Comments	9

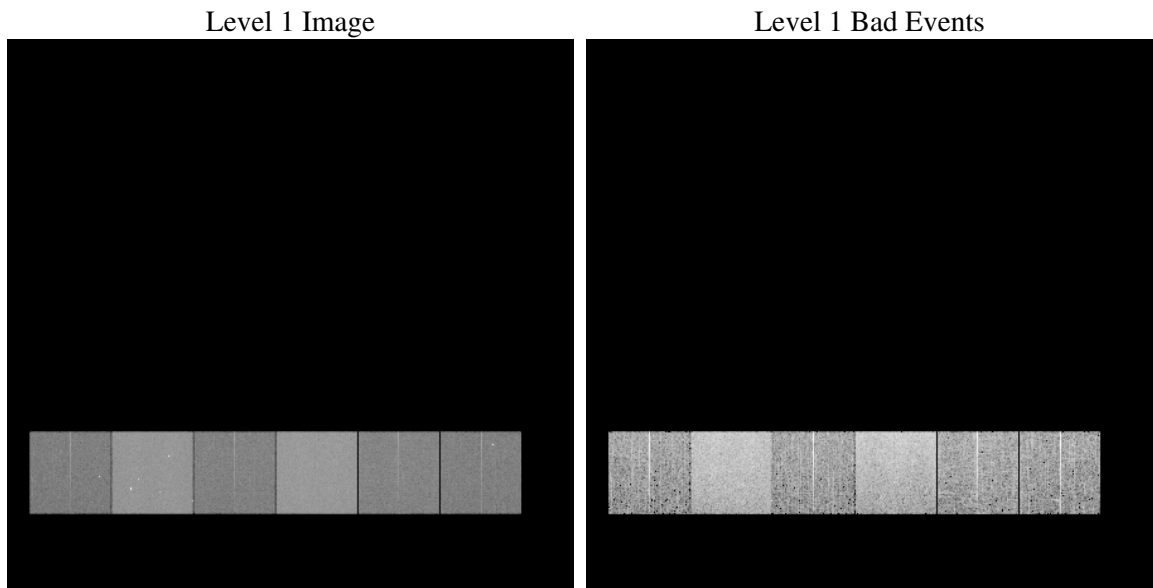
1 Front

seq_num	
obs_id	60334
title	ACIS-456789 diagnostics
observer	CHANDRA engineering request/realtime commanding
object	
dtcycle	0
cycle	P
ra_targ	0.0
dec_targ	0.0
ra_nom	164.00657846932
dec_nom	5.9722099868834
roll_nom	250.33636416862
revision	2
ontime	7798.3999709487
livetime	7699.6519348838
ontime4	3792.538448602
ontime5	7798.3999709487
ontime6	4040.0945234597
ontime7	7798.3999709487
ontime8	4191.1815616786
ontime9	3929.7771083713
l2events	1099657

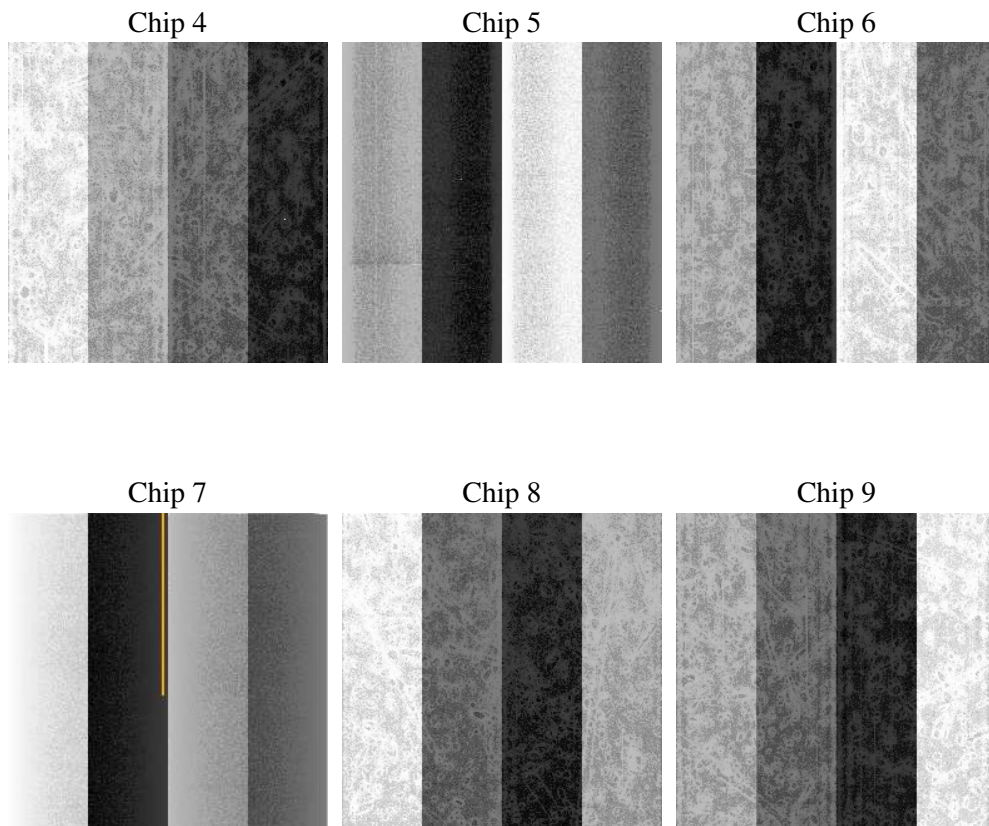
2 OBI

2.1 OBI

2.1.1 Images



2.1.2 Bias



2.1.3 Parameters

obi_num	0
ascdsver	7.6.7.2
caldbver	3.2.2
date	2006-05-29T21:31:20
revision	2

sched_exp_time	0.0
ontime	7801.1094122827
ontime4	3795.247889936
ontime5	7801.1094122827
ontime6	4041.5647004247
ontime7	7801.1094122827
ontime8	4193.8910030127
ontime9	3931.3704053462
l1events	1419846

2.1.4 Events

	ccd 4	ccd 5	ccd 6	ccd 7	ccd 8	ccd 9
level 1 events	169024	327306	187577	352835	202420	180684
rejected events	32414	63410	33716	60369	36978	33213
rejected %	19%	19%	17%	17%	18%	18%

	ccd 4	ccd 5	ccd 6	ccd 7	ccd 8	ccd 9
grade 0 events	78404	32594	82004	51615	88695	80446
	46%	9%	43%	14%	43%	44%
grade 1 events	662	123	462	151	536	562
	0%	0%	0%	0%	0%	0%
grade 2 events	21461	122877	26582	89433	28544	24862
	12%	37%	14%	25%	14%	13%
grade 3 events	9069	8399	9524	20449	10591	9233
	5%	2%	5%	5%	5%	5%
grade 4 events	8895	8232	9360	20039	10720	9043
	5%	2%	4%	5%	5%	5%
grade 5 events	1967	6429	2182	7034	2585	2118
	1%	1%	1%	1%	1%	1%
grade 6 events	18781	91794	26391	110930	26892	23887
	11%	28%	14%	31%	13%	13%
grade 7 events	29785	56858	31072	53184	33857	30533
	17%	17%	16%	15%	16%	16%

2.2 Compared Parameters

Parameter	Planned	Actual	Parameter	Planned	Actual
Instrument	ACIS	ACIS	Obspar format version number	6	6
Detector	ACIS-456789	ACIS-456789	Obspar file type	PREDICTED	ACTUAL
Grating	NONE	NONE	Obspar update status	NONE	UPDATED
Data mode	FAINT	FAINT	On-chip summing requested	N	N
Observation mode	SECONDARY	SECONDARY	Subarray requested	NONE	NONE
Pointing RA	0	164.0065784693235	Alternating exposures requested	N	N
Pointing Dec	0	5.972209986883383	Primary exposure time	0.000000	3.2
Pointing Roll	0.0	250.3363641686225			
SIM focus pos (mm)	-0.684267	-0.6828225247311905			
SIM defocus (mm)	0	0.8505141146731063			
SIM translation stage pos (mm)	-190.132523	250.4635187648994			
SIM translation stage offset (mm)	0	-0.007540371344731511			
Observation start time	196014881.528855	196014880.50386			
Observation start date	2004-03-18T16:34:42	2004-03-18T16:34:40			
Observation end time	196030188.879526	196030187.85453			
Observation end date	2004-03-18T20:49:49	2004-03-18T20:49:47			
Read mode	TIMED	TIMED			

2.3 Aspect

2.4 Star Slots

2.5 FID Slots

A Summary

A.1 Status

V&V Scientist	Beth Sundheim
V&V Date (YYYY-MM-DD)	2006.05.30
V&V Edition	1
V&V Disposition and Status	OK
V&V Charge Time	7.79839997

A.2 Comments