

V&V Reference Report

L2 ASCDS Version : 7.6.7.2

Observation 60305 - L2 Version _e1
Chandra X-Ray Center

L2 Processing Date : May 27 2006

Contents

1	Front	2
2	OBI Primary	3
2.1	OBI	3
2.1.1	Images	3
2.1.2	Bias	3
2.1.3	Parameters	4
2.1.4	Events	4
2.2	Compared Parameters	5
2.3	Aspect	6
2.4	Star Slots	8
2.5	FID Slots	8
3	OBI Secondary	8
3.1	OBI	8
3.1.1	Images	8
3.1.2	Bias	8
3.1.3	Parameters	9
3.1.4	Events	9
A	Summary	10
A.1	Status	10
A.2	Comments	10

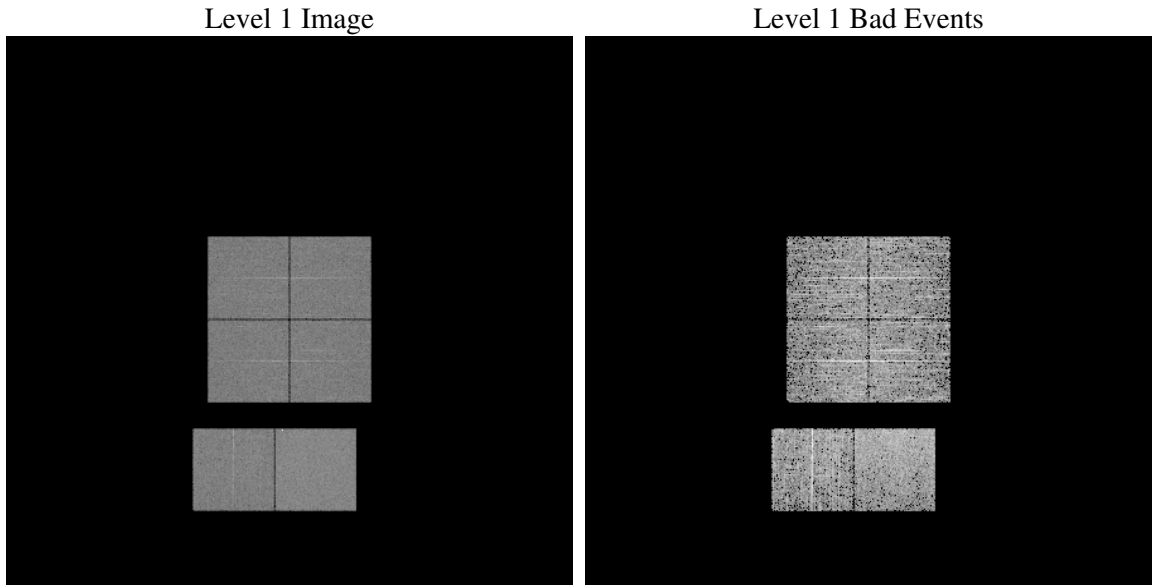
1 Front

seq_num	
obs_id	60305
title	ACIS-012367 diagnostics
observer	CHANDRA engineering request/realtime commanding
object	
dtcycle	0
cycle	P
ra_targ	0.0
dec_targ	0.0
ra_nom	194.0004180087
dec_nom	-7.9714321512686
roll_nom	56.26815436867
revision	2
ontime	3373.0416758955
livetime	3338.7857342619
ontime0	2807.8549543023
ontime1	2823.4602354467
ontime2	2747.157274276
ontime3	2770.9267154038
ontime6	2843.6654354632
ontime7	3373.0416758955
l2events	531513

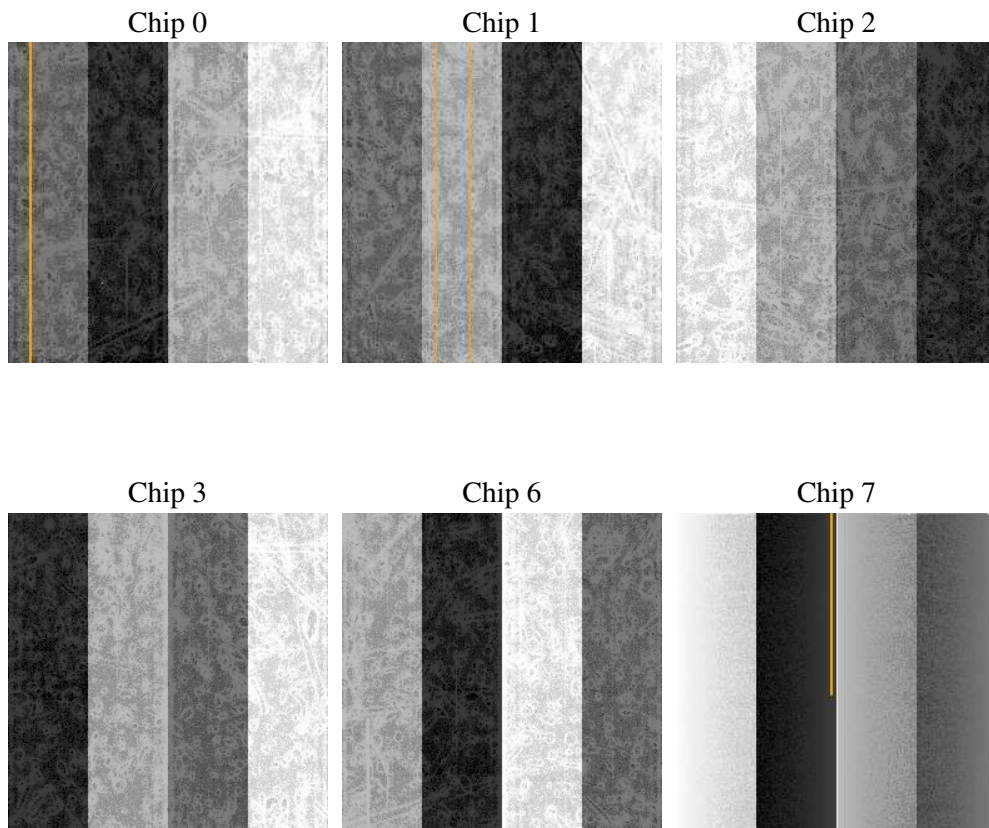
2 OBI Primary

2.1 OBI

2.1.1 Images



2.1.2 Bias



2.1.3 Parameters

obi_num	0
ascdsver	7.6.7.2
caldsver	3.2.2
date	2006-05-27T14:10:36
revision	2

sched_exp_time	0.0
ontime	3374.2684027553
ontime0	2808.5228022933
ontime1	2824.6869623065
ontime2	2747.9072022438
ontime3	2772.1534422636
ontime6	2844.892162323
ontime7	3374.2684027553
l1events	672245

2.1.4 Events

	ccd 0	ccd 1	ccd 2	ccd 3	ccd 6	ccd 7
level 1 events	105138	106242	105290	106737	114145	134693
rejected events	17109	17442	18266	18531	20378	21796
rejected %	16%	16%	17%	17%	17%	16%

	ccd 0	ccd 1	ccd 2	ccd 3	ccd 6	ccd 7
grade 0 events	48221	48851	48734	49507	50718	19647
	45%	45%	46%	46%	44%	14%
grade 1 events	312	301	349	350	309	63
	0%	0%	0%	0%	0%	0%
grade 2 events	15354	15808	14673	14942	16321	35009
	14%	14%	13%	13%	14%	25%
grade 3 events	5772	5561	5697	5845	5916	8185
	5%	5%	5%	5%	5%	6%
grade 4 events	5639	5620	5756	5694	5923	7997
	5%	5%	5%	5%	5%	5%
grade 5 events	1209	1234	1233	1236	1362	2733
	1%	1%	1%	1%	1%	2%
grade 6 events	13043	12960	12164	12218	14889	42059
	12%	12%	11%	11%	13%	31%
grade 7 events	15588	15907	16684	16945	18707	19000
	14%	14%	15%	15%	16%	14%

2.2 Compared Parameters

Parameter	Planned	Actual	Parameter	Planned	Actual
Instrument	ACIS	ACIS	Obspar format version number	6	6
Detector	ACIS-012367	ACIS-012367	Obspar file type	PREDICTED	ACTUAL
Grating	NONE	NONE	Obspar update status	NONE	UPDATED
Data mode	FAINT	FAINT	On-chip summing requested	N	N
Observation mode	SECONDARY	SECONDARY	Subarray requested	NONE	NONE
Pointing RA	0	194.000418008696	Alternating exposures requested	N	Y
Pointing Dec	0	-7.97143215126863	Primary exposure time	0.000000	4
Pointing Roll	0.0	56.26815436866972	Secondary exposure time	N/A	3.2
SIM focus pos (mm)	-0.782348	-0.7809083437167272	Duty cycle	N/A	1
SIM defocus (mm)	0	0.7524282956875696			
SIM translation stage pos (mm)	-233.592463	250.466033080201			
SIM translation stage offset (mm)	0	-0.01005468664627074			
Observation start time	196734033.860462	196734032.83546			
Observation start date	2004-03-27T00:20:34	2004-03-27T00:20:32			
Observation end time	196754552.311365	196754551.28636			
Observation end date	2004-03-27T06:02:32	2004-03-27T06:02:31			
Read mode	TIMED	TIMED			

2.3 Aspect

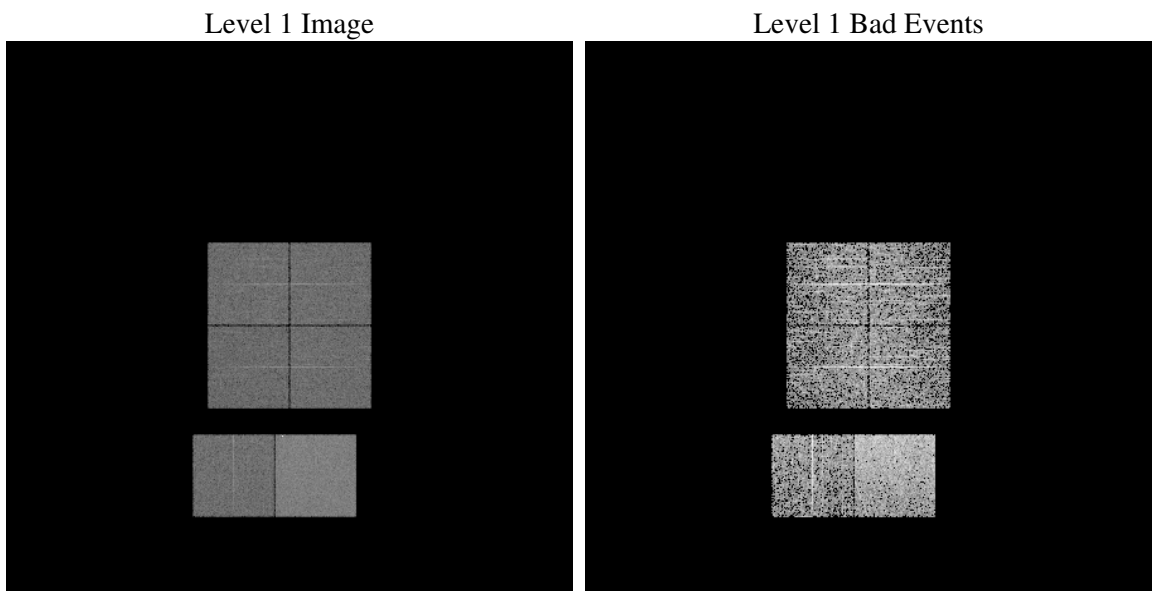
2.4 Star Slots

2.5 FID Slots

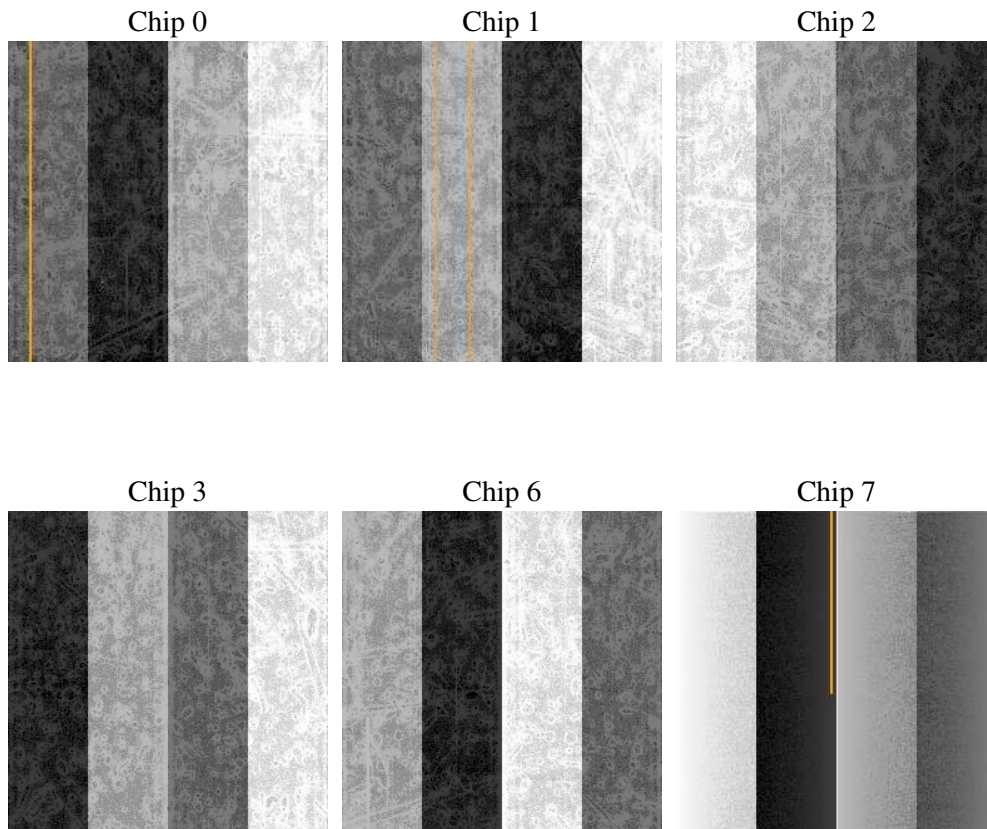
3 OBI Secondary

3.1 OBI

3.1.1 Images



3.1.2 Bias



3.1.3 Parameters

obi_num	0
ascdsver	7.6.7.2
caldsver	3.2.2
date	2006-05-27T14:12:29
revision	2

sched_exp_time	0.0
ontime	2709.5094327927
ontime0	1782.5719952583
ontime1	1763.1257553101
ontime2	1591.350635767
ontime3	1724.2332754135
ontime6	1730.7153553963
ontime7	2709.5094327927
l1events	441950

3.1.4 Events

	ccd 0	ccd 1	ccd 2	ccd 3	ccd 6	ccd 7
level 1 events	67552	67357	61620	66471	69709	109241
rejected events	11485	11788	10633	11729	12248	19168
rejected %	17%	17%	17%	17%	17%	17%

	ccd 0	ccd 1	ccd 2	ccd 3	ccd 6	ccd 7
grade 0 events	31030	30612	28592	30584	31179	15460
	45%	45%	46%	46%	44%	14%
grade 1 events	160	151	191	182	177	49
	0%	0%	0%	0%	0%	0%
grade 2 events	9745	9979	8656	9484	9986	27840
	14%	14%	14%	14%	14%	25%
grade 3 events	3610	3523	3354	3617	3583	6586
	5%	5%	5%	5%	5%	6%
grade 4 events	3682	3521	3303	3638	3619	6484
	5%	5%	5%	5%	5%	5%
grade 5 events	757	824	685	786	848	2271
	1%	1%	1%	1%	1%	2%
grade 6 events	8105	8025	7184	7522	9205	33815
	11%	11%	11%	11%	13%	30%
grade 7 events	10463	10722	9655	10658	11112	16736
	15%	15%	15%	16%	15%	15%

A Summary

A.1 Status

V&V Scientist	Jen Lauer
V&V Date (YYYY-MM-DD)	2006.05.30
V&V Edition	1
V&V Disposition and Status	OK
V&V Charge Time	6.07931006

A.2 Comments