

V&V Reference Report

L2 ASCDS Version : 7.6.7.2

Observation 60297 - L2 Version 001
Chandra X-Ray Center

L2 Processing Date : May 27 2006

Contents

1	Front	2
2	OBI	3
2.1	OBI	3
2.1.1	Images	3
2.1.2	Bias	3
2.1.3	Parameters	4
2.1.4	Events	4
2.2	Compared Parameters	5
2.3	Aspect	6
2.4	Star Slots	8
2.5	FID Slots	8
A	Summary	9
A.1	Status	9
A.2	Comments	9

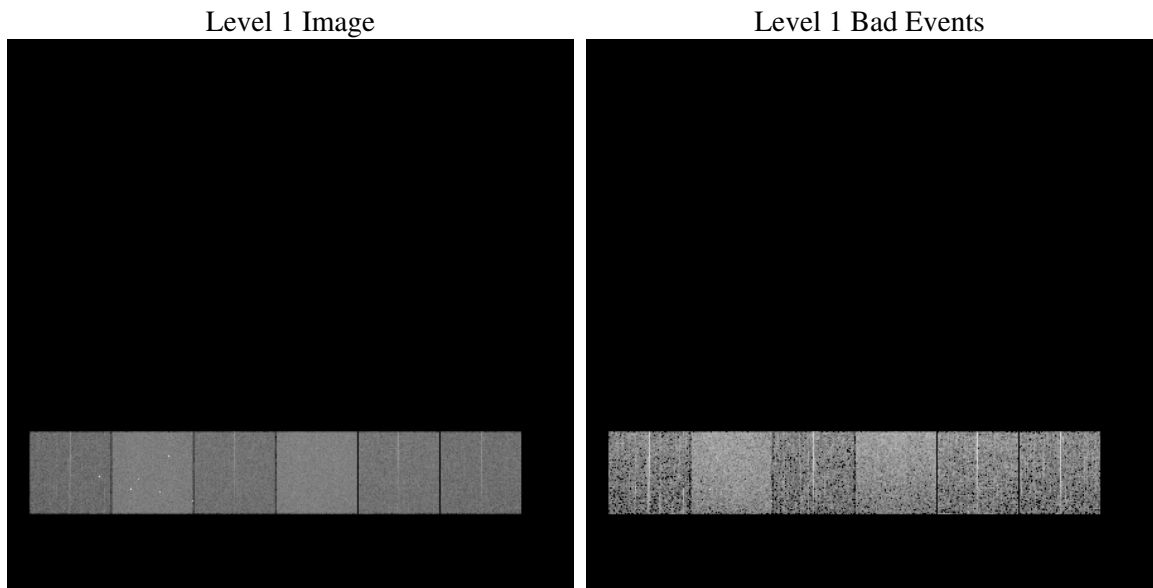
1 Front

seq_num	
obs_id	60297
title	ACIS-456789 diagnostics
observer	CHANDRA engineering request/realtime commanding
object	
dtcycle	0
cycle	P
ra_targ	0.0
dec_targ	0.0
ra_nom	71.058715422043
dec_nom	64.985852384255
roll_nom	297.36446114889
revision	2
ontime	4057.5999848843
livetime	4006.2202106823
ontime4	2505.1707978249
ontime5	4057.5999848843
ontime6	2790.3774993122
ontime7	4057.5999848843
ontime8	2809.8234704435
ontime9	2693.1478324831
l2events	575161

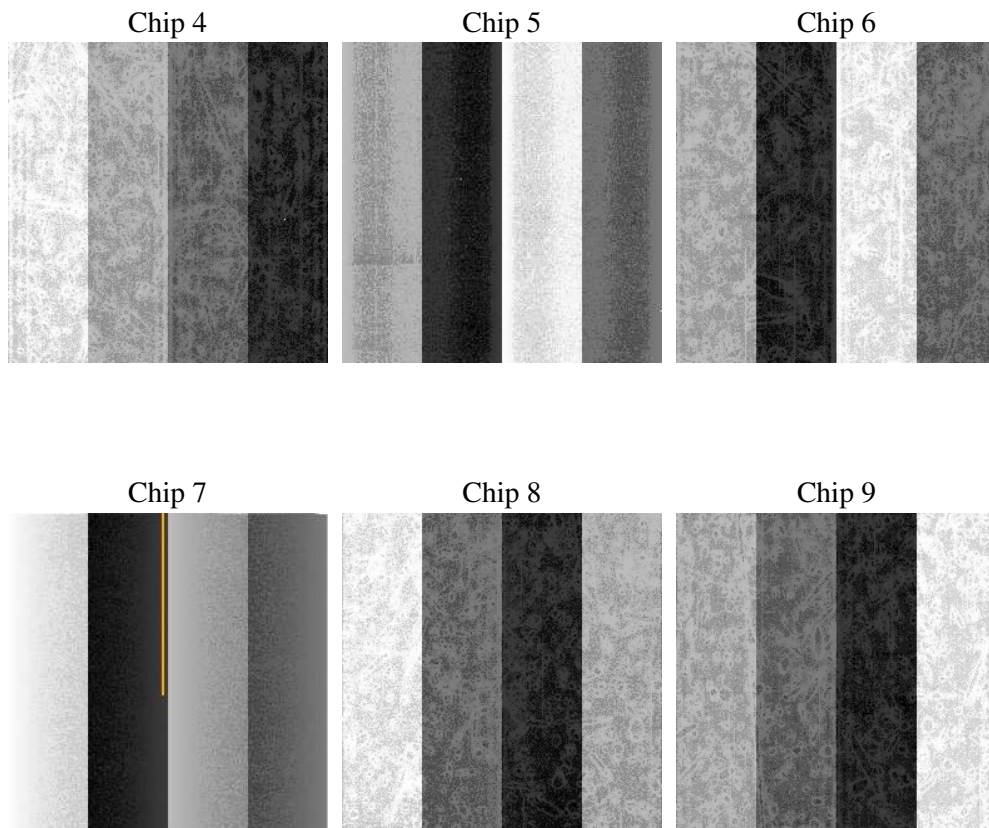
2 OBI

2.1 OBI

2.1.1 Images



2.1.2 Bias



2.1.3 Parameters

obi_num	0
ascdsver	7.6.7.2
caldbver	3.2.2
date	2006-05-27T15:29:45
revision	2

sched_exp_time	0.0
ontime	4060.9816683829
ontime4	2508.5524813235
ontime5	4060.9816683829
ontime6	2793.7591828108
ontime7	4060.9816683829
ontime8	2813.2051539421
ontime9	2696.5295159817
l1events	749185

2.1.4 Events

	ccd 4	ccd 5	ccd 6	ccd 7	ccd 8	ccd 9
level 1 events	96714	154701	111431	162089	118004	106246
rejected events	18817	30284	18857	27787	22521	20009
rejected %	19%	19%	16%	17%	19%	18%

	ccd 4	ccd 5	ccd 6	ccd 7	ccd 8	ccd 9
grade 0 events	45417	17068	50153	24213	51696	47749
	46%	11%	45%	14%	43%	44%
grade 1 events	307	213	240	66	279	284
	0%	0%	0%	0%	0%	0%
grade 2 events	12479	57196	16190	40367	16793	14695
	12%	36%	14%	24%	14%	13%
grade 3 events	5056	4236	5761	9942	6265	5588
	5%	2%	5%	6%	5%	5%
grade 4 events	5198	4246	5801	9648	6275	5482
	5%	2%	5%	5%	5%	5%
grade 5 events	1109	3124	1376	3482	1497	1379
	1%	2%	1%	2%	1%	1%
grade 6 events	9842	41772	14782	50242	14569	12826
	10%	27%	13%	30%	12%	12%
grade 7 events	17306	26846	17128	24129	20630	18243
	17%	17%	15%	14%	17%	17%

2.2 Compared Parameters

Parameter	Planned	Actual	Parameter	Planned	Actual
Instrument	ACIS	ACIS	Obspar format version number	6	6
Detector	ACIS-456789	ACIS-456789	Obspar file type	PREDICTED	ACTUAL
Grating	NONE	NONE	Obspar update status	NONE	UPDATED
Data mode	FAINT	FAINT	On-chip summing requested	N	N
Observation mode	SECONDARY	SECONDARY	Subarray requested	NONE	NONE
Pointing RA	0	71.05871542204328	Alternating exposures requested	N	N
Pointing Dec	0	64.98585238425468	Primary exposure time	0.000000	3.2
Pointing Roll	0.0	297.3644611488879			
SIM focus pos (mm)	-0.684267	-0.6828225247311905			
SIM defocus (mm)	0	0.8505141146731063			
SIM translation stage pos (mm)	-190.132523	250.4635187648994			
SIM translation stage offset (mm)	0	-0.007540371344731511			
Observation start time	197384859.689035	197384858.66404			
Observation start date	2004-04-03T13:07:40	2004-04-03T13:07:38			
Observation end time	197402106.339792	197402105.3148			
Observation end date	2004-04-03T17:55:06	2004-04-03T17:55:05			
Read mode	TIMED	TIMED			

2.3 Aspect

2.4 Star Slots

2.5 FID Slots

A Summary

A.1 Status

V&V Scientist	Jen Lauer
V&V Date (YYYY-MM-DD)	2006.05.30
V&V Edition	1
V&V Disposition and Status	OK
V&V Charge Time	4.05759998

A.2 Comments