

V&V Reference Report

L2 ASCDS Version : 8.4.5

Observation 60287 - L2 Version 3
Chandra X-Ray Center

L2 Processing Date : Nov 30 2012

Contents

1	Front	2
2	OBI	3
2.1	OBI	3
2.1.1	Images	3
2.1.2	Bias	3
2.1.3	Parameters	4
2.1.4	Events	4
2.2	Compared Parameters	5
2.3	Star Slots	6
2.4	FID Slots	6
A	Summary	7
A.1	Status	7
A.2	Comments	7

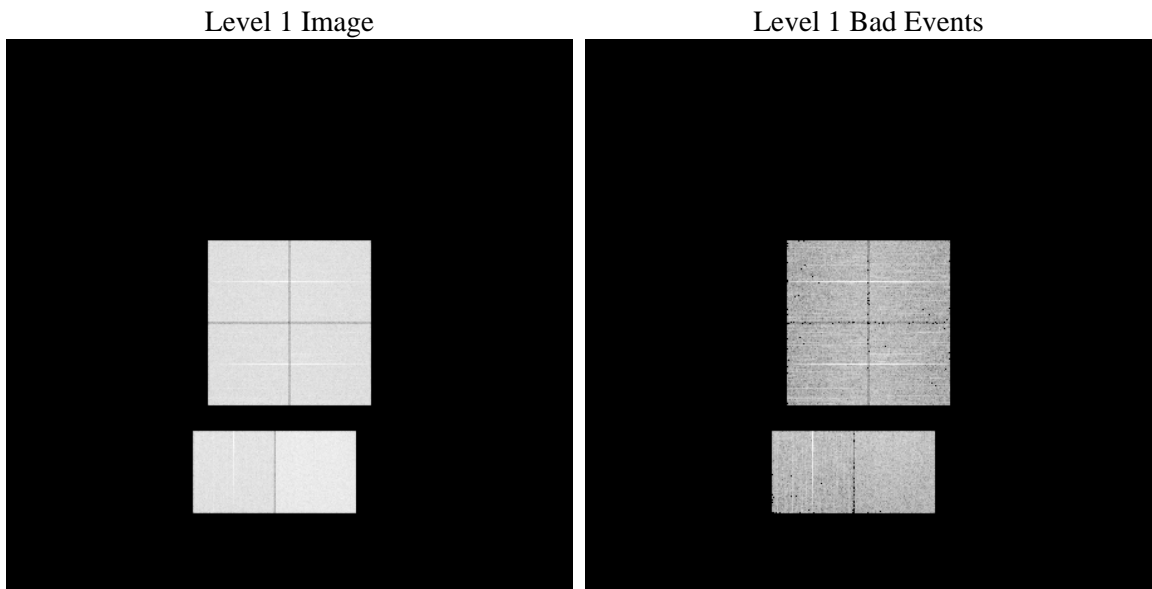
1 Front

seq_num	 	Sequence number
obs_id	60287	Observation id
title	ACIS-012367 diagnostics	Proposal title
observer	CHANDRA engineering request/realtime commanding	Principal investig
object	 	Source name
dtcycle	0	
cycle	P	events from which exps? Prim/Second/Both
ra_targ	0.0	Observer's specified target RA [deg]
dec_targ	0.0	Observer's specified target Dec [deg]
ra_nom	198.02649132638	Nominal RA [deg]
dec_nom	-23.984735299972	Nominal Dec [deg]
roll_nom	359.41950207938	Nominal Roll [deg]
revision	3	Processing version of data
ontime	8460.1546616256	Sum of GTIs [s]
livetime	8353.0270892066	Livetime [s]
ontime0	6220.6014172435	Sum of GTIs [s]
ontime1	6294.0523378849	Sum of GTIs [s]
ontime2	5945.0352778137	Sum of GTIs [s]
ontime3	6042.4281284213	Sum of GTIs [s]
ontime6	6444.104021728	Sum of GTIs [s]
ontime7	8460.1546616256	Sum of GTIs [s]
l2events	1212615	Number of level 2 events

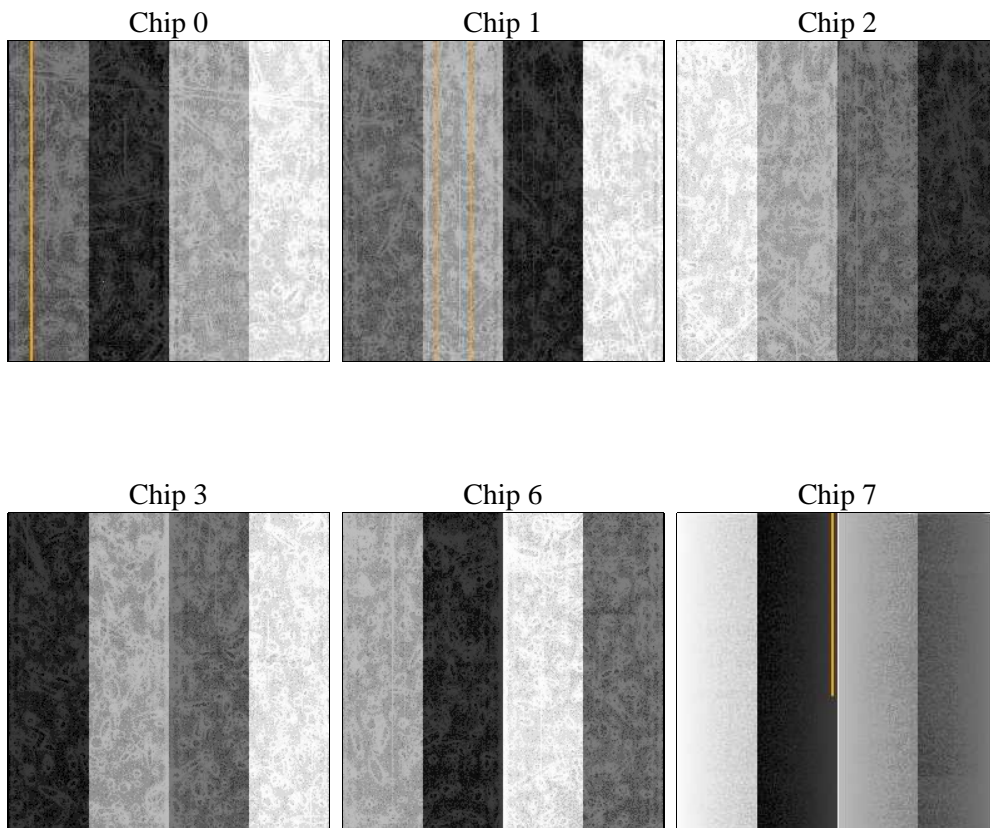
2 OBI

2.1 OBI

2.1.1 Images



2.1.2 Bias



2.1.3 Parameters

obi_num	0	Obi number	sched_exp_time	0.0	[s] Scheduled observation exposure time
ascdsver	8.4.5	Processing system revision	ontime	8460.1546616256	Sum of GTIs [s]
caldsver	4.5.2	 	ontime0	6220.6014172435	Sum of GTIs [s]
date	2012-11-29T21:54:15	Date and time of file creation	ontime1	6294.0523378849	Sum of GTIs [s]
revision	3	Processing version of data	ontime2	5945.0352778137	Sum of GTIs [s]
			ontime3	6042.4281284213	Sum of GTIs [s]
			ontime6	6444.104021728	Sum of GTIs [s]
			ontime7	8460.1546616256	Sum of GTIs [s]
			l1events	1533631	Number of level 1 events

2.1.4 Events

	ccd 0	ccd 1	ccd 2	ccd 3	ccd 6	ccd 7		ccd 0	ccd 1	ccd 2	ccd 3	ccd 6	ccd 7
level 1 events	235273	238471	231147	233646	256948	338146	grade 0 events	106998	107899	105758	107448	114997	70223
rejected events	40708	41902	42334	42331	45270	49659		45%	45%	45%	45%	44%	20%
rejected %	17%	17%	18%	18%	17%	14%	grade 1 events	582	526	642	604	604	211
								0%	0%	0%	0%	0%	0%
							grade 2 events	33977	34819	31868	32825	36141	63472
								14%	14%	13%	14%	14%	18%
							grade 3 events	12590	12520	12381	12454	13346	28991
								5%	5%	5%	5%	5%	8%
							grade 4 events	12608	12632	12305	12537	13288	28735
								5%	5%	5%	5%	5%	8%
							grade 5 events	2738	2760	2586	2813	3081	9013
								1%	1%	1%	1%	1%	2%
							grade 6 events	28491	28699	26602	26165	34031	97182
								12%	12%	11%	11%	13%	28%
							grade 7 events	37289	38616	39005	38800	41460	40319
								15%	16%	16%	16%	16%	11%

2.2 Compared Parameters

Parameter	Planned	Actual	Parameter	Planned	Actual
Instrument	ACIS	ACIS	Obspar format version number	7	7
Detector	ACIS-012367	ACIS-012367	Obspar file type	PREDICTED	ACTUAL
Grating	NONE	NONE	Obspar update status	NONE	UPDATED
Data mode	FAINT	FAINT	On-chip summing requested	N	N
Observation mode	SECONDARY	SECONDARY	Subarray requested	NONE	NONE
[deg] Pointing RA	0	198.0264913263806	Alternating exposures requested	N	N
[deg] Pointing Dec	0	-23.98473529997158	[s] Primary exposure time	0.000000	3.2
[deg] Pointing Roll	0.0	359.4195020793783			
[mm] SIM focus pos	-0.782348	-0.6828225247311905			
[mm] SIM defocus	0	0.8505141146731063			
[mm] SIM translation stage pos	-233.592463	250.466033080201			
[mm] SIM translation stage offset	0	-0.01005468664627074			
[s] Observation start time (MET)	197878487.410749	197878486.38575			
Observation start date	2004-04-09T06:14:47	2004-04-09T06:14:46			
[s] Observation end time (MET)	197902609.76181	197902608.73681			
Observation end date	2004-04-09T12:56:50	2004-04-09T12:56:48			
Read mode	TIMED	TIMED			

2.3 Star Slots

2.4 FID Slots

A Summary

A.1 Status

V&V Scientist	Beth Sundheim
V&V Date (YYYY-MM-DD)	2012.12.21
V&V Edition	1
V&V Disposition and Status	OK
V&V Charge Time	8.4601546616256

A.2 Comments