

V&V Reference Report

L2 ASCDS Version : 8.4.5

Observation 60253 - L2 Version 3
Chandra X-Ray Center

L2 Processing Date : Nov 30 2012

Contents

1	Front	2
2	OBI	3
2.1	OBI	3
2.1.1	Images	3
2.1.2	Bias	3
2.1.3	Parameters	4
2.1.4	Events	4
2.2	Compared Parameters	5
2.3	Star Slots	6
2.4	FID Slots	6
A	Summary	7
A.1	Status	7
A.2	Comments	7

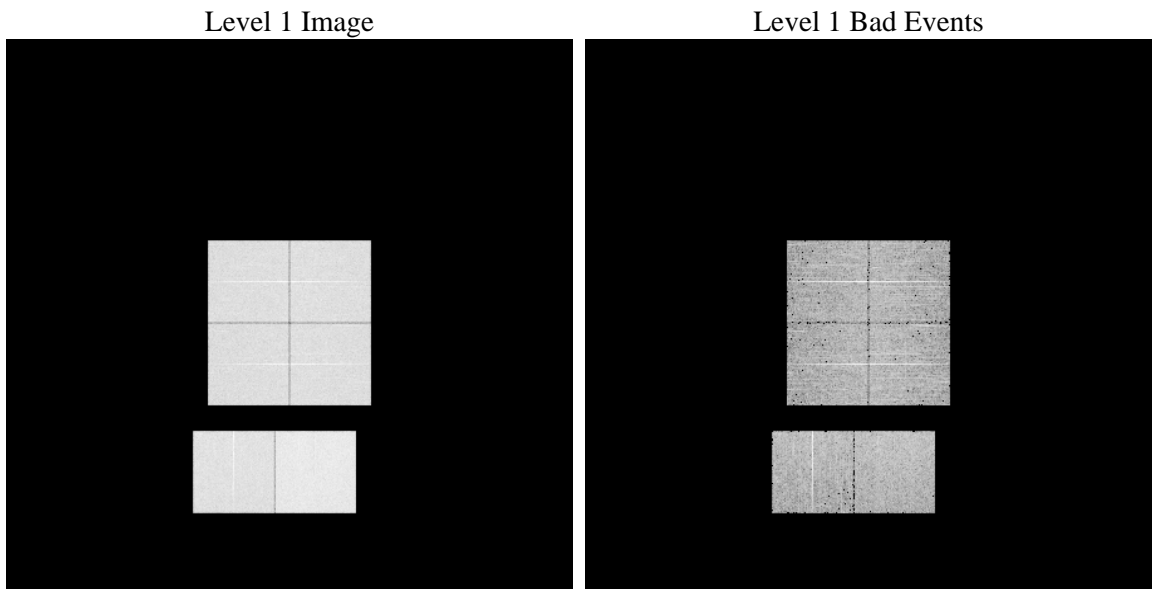
1 Front

seq_num	 	Sequence number
obs_id	60253	Observation id
title	ACIS-012367 diagnostics	Proposal title
observer	CHANDRA engineering request/realtime commanding	Principal investig
object	 	Source name
dtcycle	0	
cycle	P	events from which exps? Prim/Second/Both
ra_targ	0.0	Observer's specified target RA [deg]
dec_targ	0.0	Observer's specified target Dec [deg]
ra_nom	261.97410078359	Nominal RA [deg]
dec_nom	9.0128149478759	Nominal Dec [deg]
roll_nom	120.48085195993	Nominal Roll [deg]
revision	3	Processing version of data
ontime	7062.3999736905	Sum of GTIs [s]
livetime	6972.9716127569	Livetime [s]
ontime0	5250.6993879974	Sum of GTIs [s]
ontime1	5331.7236039639	Sum of GTIs [s]
ontime2	5017.3502066731	Sum of GTIs [s]
ontime3	5062.7236305475	Sum of GTIs [s]
ontime6	5539.1464185119	Sum of GTIs [s]
ontime7	7062.3999736905	Sum of GTIs [s]
l2events	1010620	Number of level 2 events

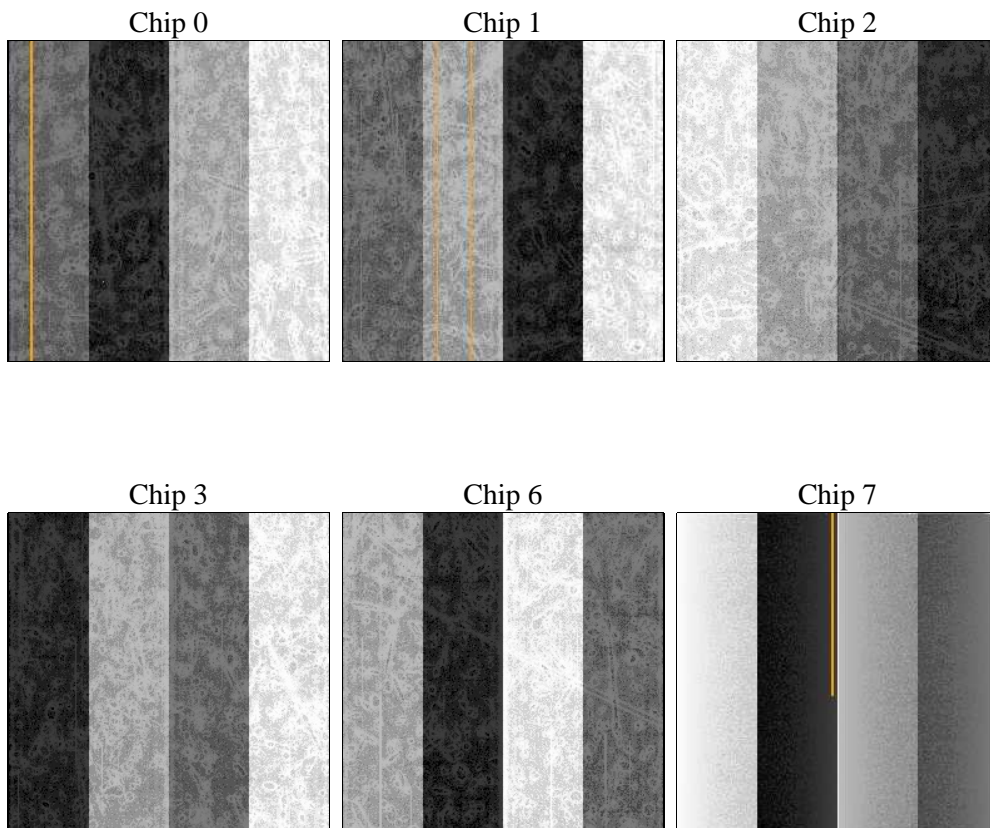
2 OBI

2.1 OBI

2.1.1 Images



2.1.2 Bias



2.1.3 Parameters

obi_num	0	Obi number	sched_exp_time	0.0	[s] Scheduled observation exposure time
ascdsver	8.4.5	Processing system revision	ontime	7062.3999736905	Sum of GTIs [s]
caldsver	4.5.2	 	ontime0	5250.6993879974	Sum of GTIs [s]
date	2012-11-30T19:43:25	Date and time of file creation	ontime1	5331.7236039639	Sum of GTIs [s]
revision	3	Processing version of data	ontime2	5017.3502066731	Sum of GTIs [s]
			ontime3	5062.7236305475	Sum of GTIs [s]
			ontime6	5539.1464185119	Sum of GTIs [s]
			ontime7	7062.3999736905	Sum of GTIs [s]
			l1events	1284384	Number of level 1 events

2.1.4 Events

	ccd 0	ccd 1	ccd 2	ccd 3	ccd 6	ccd 7		ccd 0	ccd 1	ccd 2	ccd 3	ccd 6	ccd 7
level 1 events	196596	200458	190977	197476	217863	281014	grade 0 events	89011	90262	87935	89497	97417	58263
rejected events	34776	35937	34505	38415	38884	41770		45%	45%	46%	45%	44%	20%
rejected %	17%	17%	18%	19%	17%	14%	grade 1 events	506	456	615	524	494	184
								0%	0%	0%	0%	0%	0%
							grade 2 events	28359	29412	26509	27172	30739	53294
								14%	14%	13%	13%	14%	18%
							grade 3 events	10689	10428	10150	10404	11178	23984
								5%	5%	5%	5%	5%	8%
							grade 4 events	10385	10316	10158	10349	11218	23987
								5%	5%	5%	5%	5%	8%
							grade 5 events	2285	2391	2165	2410	2580	7749
								1%	1%	1%	1%	1%	2%
							grade 6 events	23467	24197	21825	21736	28553	79818
								11%	12%	11%	11%	13%	28%
							grade 7 events	31894	32996	31620	35384	35684	33735
								16%	16%	16%	17%	16%	12%

2.2 Compared Parameters

Parameter	Planned	Actual
Instrument	ACIS	ACIS
Detector	ACIS-012367	ACIS-012367
Grating	NONE	NONE
Data mode	FAINT	FAINT
Observation mode	SECONDARY	SECONDARY
[deg] Pointing RA	0	261.9741007835887
[deg] Pointing Dec	0	9.012814947875855
[deg] Pointing Roll	0.0	120.4808519599345
[mm] SIM focus pos	-0.782348	-0.6828225247311905
[mm] SIM defocus	0	0.8505141146731063
[mm] SIM translation stage pos	-233.592463	250.466033080201
[mm] SIM translation stage offset	0	-0.01005468664627074
[s] Observation start time (MET)	199899479.999802	199899478.97479
Observation start date	2004-05-02T15:38:00	2004-05-02T15:37:58
[s] Observation end time (MET)	199912183.850362	199912182.82535
Observation end date	2004-05-02T19:09:44	2004-05-02T19:09:42
Read mode	TIMED	TIMED

Parameter	Planned	Actual
Obspar format version number	7	7
Obspar file type	PREDICTED	ACTUAL
Obspar update status	NONE	UPDATED
On-chip summing requested	N	N
Subarray requested	NONE	NONE
Alternating exposures requested	N	N
[s] Primary exposure time	0.000000	3.2

2.3 Star Slots

2.4 FID Slots

A Summary

A.1 Status

V&V Scientist	Jen Lauer
V&V Date (YYYY-MM-DD)	2012.12.14
V&V Edition	1
V&V Disposition and Status	OK
V&V Charge Time	7.0623999736905

A.2 Comments