

# V&V Reference Report

## L2 ASCDS Version : 8.4.5

Observation 60244 - L2 Version 3  
Chandra X-Ray Center

L2 Processing Date : Nov 30 2012

## Contents

<b>1</b>	<b>Front</b>	<b>2</b>
<b>2</b>	<b>OBI</b>	<b>3</b>
2.1	OBI . . . . .	3
2.1.1	Images . . . . .	3
2.1.2	Bias . . . . .	3
2.1.3	Parameters . . . . .	4
2.1.4	Events . . . . .	4
2.2	Compared Parameters . . . . .	5
2.3	Star Slots . . . . .	6
2.4	FID Slots . . . . .	6
<b>A</b>	<b>Summary</b>	<b>7</b>
A.1	Status . . . . .	7
A.2	Comments . . . . .	7

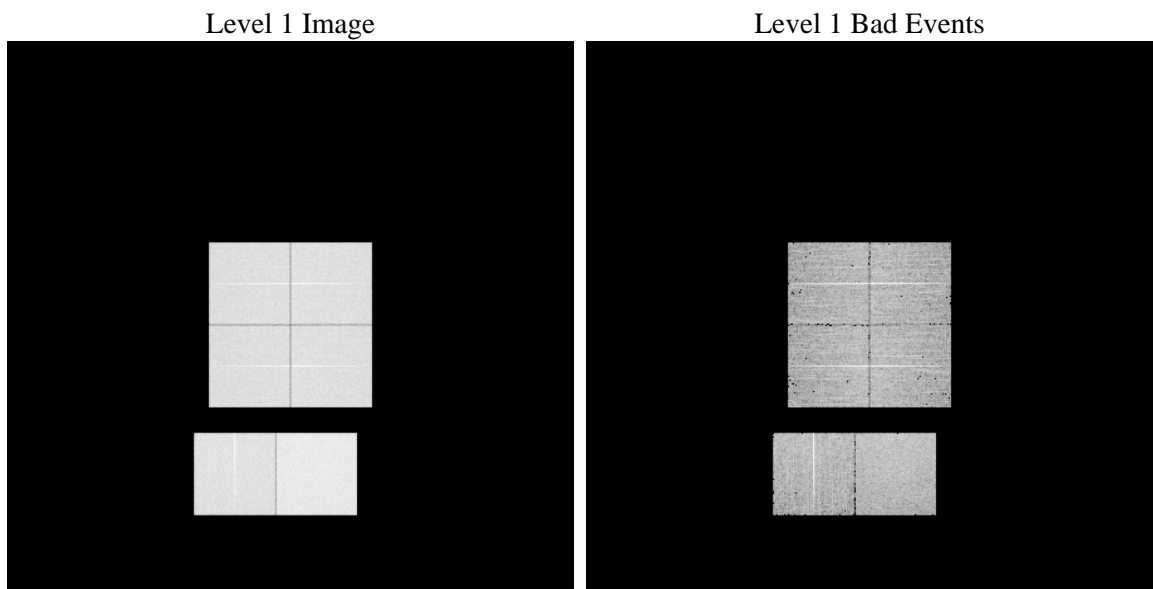
# 1 Front

seq_num	&#160	Sequence number
obs_id	60244	Observation id
title	ACIS-012367 diagnostics	Proposal title
observer	CHANDRA engineering request/realtime commanding	Principal investig
object	&#160	Source name
dtycle	0	&#160
cycle	P	events from which exps? Prim/Second/Both
ra_targ	0.0	Observer's specified target RA [deg]
dec_targ	0.0	Observer's specified target Dec [deg]
ra_nom	227.6713453236	Nominal RA [deg]
dec_nom	-7.7031756399164	Nominal Dec [deg]
roll_nom	153.44446865732	Nominal Roll [deg]
revision	3	Processing version of data
ontime	8463.9999684691	Sum of GTIs [s]
livetime	8356.8237044595	Livetime [s]
ontime0	6250.4169168174	Sum of GTIs [s]
ontime1	6432.568996042	Sum of GTIs [s]
ontime2	5985.3553500175	Sum of GTIs [s]
ontime3	6202.3364775479	Sum of GTIs [s]
ontime6	6594.6995005608	Sum of GTIs [s]
ontime7	8463.9999684691	Sum of GTIs [s]
l2events	1207632	Number of level 2 events

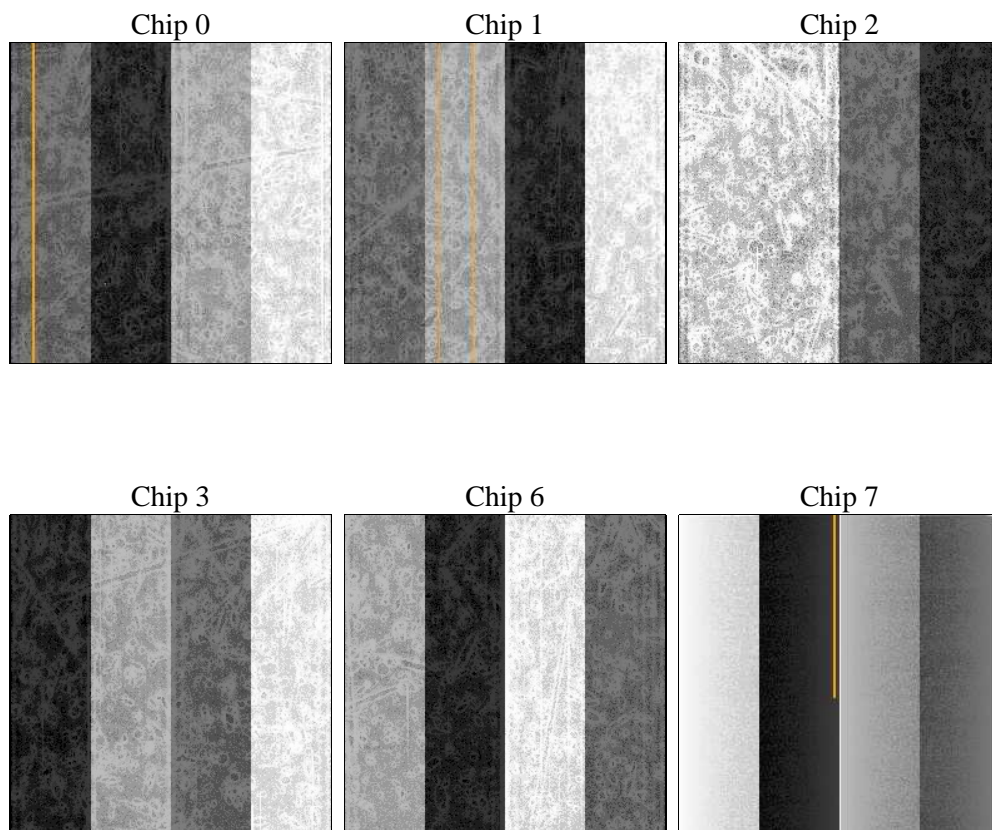
## 2 OBI

### 2.1 OBI

#### 2.1.1 Images



#### 2.1.2 Bias



### 2.1.3 Parameters

obi_num	0	Obi number	sched_exp_time	0.0	[s] Scheduled observation exposure time
ascdsver	8.4.5	Processing system revision	ontime	8463.9999684691	Sum of GTIs [s]
caldsver	4.5.2	&#160	ontime0	6250.4169168174	Sum of GTIs [s]
date	2012-11-30T22:52:31	Date and time of file creation	ontime1	6432.568996042	Sum of GTIs [s]
revision	3	Processing version of data	ontime2	5985.3553500175	Sum of GTIs [s]
			ontime3	6202.3364775479	Sum of GTIs [s]
			ontime6	6594.6995005608	Sum of GTIs [s]
			ontime7	8463.9999684691	Sum of GTIs [s]
			l1events	1533919	Number of level 1 events

### 2.1.4 Events

	ccd 0	ccd 1	ccd 2	ccd 3	ccd 6	ccd 7		ccd 0	ccd 1	ccd 2	ccd 3	ccd 6	ccd 7
level 1 events	233726	240697	228561	237870	258125	334940	grade 0 events	105746	108609	103987	108528	115085	69472
rejected events	41502	42662	42878	44354	46283	49772		45%	45%	45%	45%	44%	20%
rejected %	17%	17%	18%	18%	17%	14%	grade 1 events	635	547	679	665	611	203
								0%	0%	0%	0%	0%	0%
							grade 2 events	33907	35011	31275	33060	36625	62557
								14%	14%	13%	13%	14%	18%
							grade 3 events	12613	12760	12181	12599	13205	28642
								5%	5%	5%	5%	5%	8%
							grade 4 events	12290	12682	12182	12817	13269	28322
								5%	5%	5%	5%	5%	8%
							grade 5 events	2741	2903	2544	2976	3241	9119
								1%	1%	1%	1%	1%	2%
							grade 6 events	27668	28973	26058	26512	33658	96175
								11%	12%	11%	11%	13%	28%
							grade 7 events	38126	39212	39655	40713	42431	40450
								16%	16%	17%	17%	16%	12%

## 2.2 Compared Parameters

Parameter	Planned	Actual
Instrument	ACIS	ACIS
Detector	ACIS-012367	ACIS-012367
Grating	NONE	NONE
Data mode	FAINT	FAINT
Observation mode	SECONDARY	SECONDARY
[deg] Pointing RA	0	227.6713453235974
[deg] Pointing Dec	0	-7.703175639916418
[deg] Pointing Roll	0.0	153.4444686573174
[mm] SIM focus pos	-0.782348	-0.7809083437167272
[mm] SIM defocus	0	0.7524282956875696
[mm] SIM translation stage pos	-233.592463	250.466033080201
[mm] SIM translation stage offset	0	-0.01005468664627074
[s] Observation start time (MET)	200162021.461369	200162020.43637
Observation start date	2004-05-05T16:33:41	2004-05-05T16:33:40
[s] Observation end time (MET)	200184321.362353	200184320.33735
Observation end date	2004-05-05T22:45:21	2004-05-05T22:45:20
Read mode	TIMED	TIMED

Parameter	Planned	Actual
Obspar format version number	7	7
Obspar file type	PREDICTED	ACTUAL
Obspar update status	NONE	UPDATED
On-chip summing requested	N	N
Subarray requested	NONE	NONE
Alternating exposures requested	N	N
[s] Primary exposure time	0.000000	3.2

## **2.3 Star Slots**

## **2.4 FID Slots**

## **A Summary**

### **A.1 Status**

V&V Scientist	Beth Sundheim
V&V Date (YYYY-MM-DD)	2012.12.12
V&V Edition	1
V&V Disposition and Status	OK
V&V Charge Time	8.4639999684691

### **A.2 Comments**