

V&V Reference Report

L2 ASCDS Version : 7.6.7.2

Observation 60236 - L2 Version 001
Chandra X-Ray Center

L2 Processing Date : May 18 2006

Contents

1	Front	2
2	OBI	3
2.1	OBI	3
2.1.1	Images	3
2.1.2	Bias	3
2.1.3	Parameters	4
2.1.4	Events	4
2.2	Compared Parameters	5
2.3	Aspect	6
2.4	Star Slots	8
2.5	FID Slots	8
A	Summary	9
A.1	Status	9
A.2	Comments	9

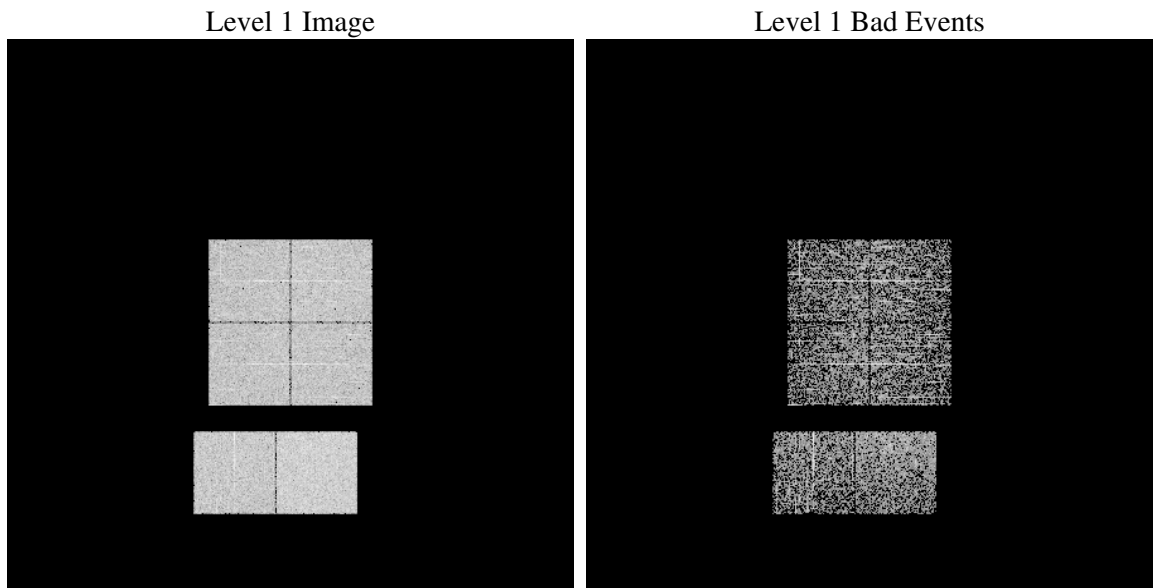
1 Front

seq_num	
obs_id	60236
title	ACIS-012367 diagnostics
observer	CHANDRA engineering request/realtime commanding
object	
dtcycle	0
cycle	P
ra_targ	0.0
dec_targ	0.0
ra_nom	198.00563114332
dec_nom	-8.0280610086926
roll_nom	248.37456733845
revision	2
ontime	1081.5999959707
livetime	1067.9041255604
ontime0	872.23402822018
ontime1	919.55135151744
ontime2	874.17746862769
ontime3	861.21385648847
ontime6	930.69471329451
ontime7	1081.5999959707
l2events	170429

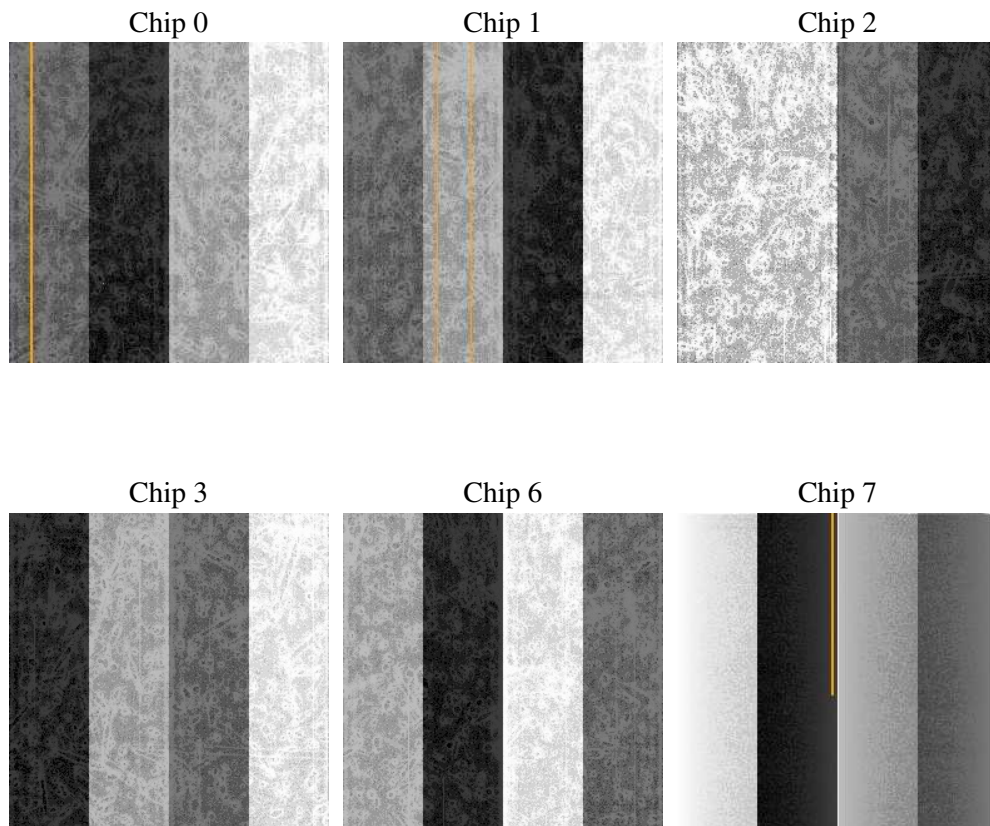
2 OBI

2.1 OBI

2.1.1 Images



2.1.2 Bias



2.1.3 Parameters

obi_num	0
ascdsver	7.6.7.2
caldbver	3.2.2
date	2006-05-18T04:29:08
revision	2

sched_exp_time	0.0
ontime	1085.7369177938
ontime0	875.07355940342
ontime1	923.68827334046
ontime2	878.31439045072
ontime3	865.35077831149
ontime6	933.41112449765
ontime7	1085.7369177938
l1events	219965

2.1.4 Events

	ccd 0	ccd 1	ccd 2	ccd 3	ccd 6	ccd 7
level 1 events	33574	36142	34123	34409	37673	44044
rejected events	6354	6556	6309	6816	7033	7857
rejected %	18%	18%	18%	19%	18%	17%

	ccd 0	ccd 1	ccd 2	ccd 3	ccd 6	ccd 7
grade 0 events	14815	16171	15510	15456	16639	6471
	44%	44%	45%	44%	44%	14%
grade 1 events	85	80	99	109	86	20
	0%	0%	0%	0%	0%	0%
grade 2 events	4745	5249	4769	4648	5337	10875
	14%	14%	13%	13%	14%	24%
grade 3 events	1743	1911	1839	1837	1855	2616
	5%	5%	5%	5%	4%	5%
grade 4 events	1735	1854	1813	1847	1942	2631
	5%	5%	5%	5%	5%	5%
grade 5 events	410	383	397	430	452	980
	1%	1%	1%	1%	1%	2%
grade 6 events	4266	4504	3994	3899	4982	13703
	12%	12%	11%	11%	13%	31%
grade 7 events	5775	5990	5702	6183	6380	6748
	17%	16%	16%	17%	16%	15%

2.2 Compared Parameters

Parameter	Planned	Actual	Parameter	Planned	Actual
Instrument	ACIS	ACIS	Obspar format version number	6	6
Detector	ACIS-012367	ACIS-012367	Obspar file type	PREDICTED	ACTUAL
Grating	NONE	NONE	Obspar update status	NONE	UPDATED
Data mode	FAINT	FAINT	On-chip summing requested	N	N
Observation mode	SECONDARY	SECONDARY	Subarray requested	NONE	NONE
Pointing RA	0	198.0056311433214	Alternating exposures requested	N	N
Pointing Dec	0	-8.028061008692594	Primary exposure time	0.000000	3.2
Pointing Roll	0.0	248.3745673384526			
SIM focus pos (mm)	-0.782348	-0.6828225247311905			
SIM defocus (mm)	0	0.8505141146731063			
SIM translation stage pos (mm)	-233.592463	250.466033080201			
SIM translation stage offset (mm)	0	-0.01005468664627074			
Observation start time	200814134.690129	200814133.66514			
Observation start date	2004-05-13T05:42:15	2004-05-13T05:42:13			
Observation end time	200847646.041608	200847645.01662			
Observation end date	2004-05-13T15:00:46	2004-05-13T15:00:45			
Read mode	TIMED	TIMED			

2.3 Aspect

2.4 Star Slots

2.5 FID Slots

A Summary

A.1 Status

V&V Scientist	Jen Lauer
V&V Date (YYYY-MM-DD)	2006.05.18
V&V Edition	1
V&V Disposition and Status	OK
V&V Charge Time	1.08159999

A.2 Comments