

# V&V Reference Report

## L2 ASCDS Version : 8.4.5

Observation 60231 - L2 Version 3  
Chandra X-Ray Center

L2 Processing Date : Dec 1 2012

## Contents

<b>1</b>	<b>Front</b>	<b>2</b>
<b>2</b>	<b>OBI</b>	<b>3</b>
2.1	OBI . . . . .	3
2.1.1	Images . . . . .	3
2.1.2	Bias . . . . .	3
2.1.3	Parameters . . . . .	4
2.1.4	Events . . . . .	4
2.2	Compared Parameters . . . . .	5
2.3	Star Slots . . . . .	6
2.4	FID Slots . . . . .	6
<b>A</b>	<b>Summary</b>	<b>7</b>
A.1	Status . . . . .	7
A.2	Comments . . . . .	7

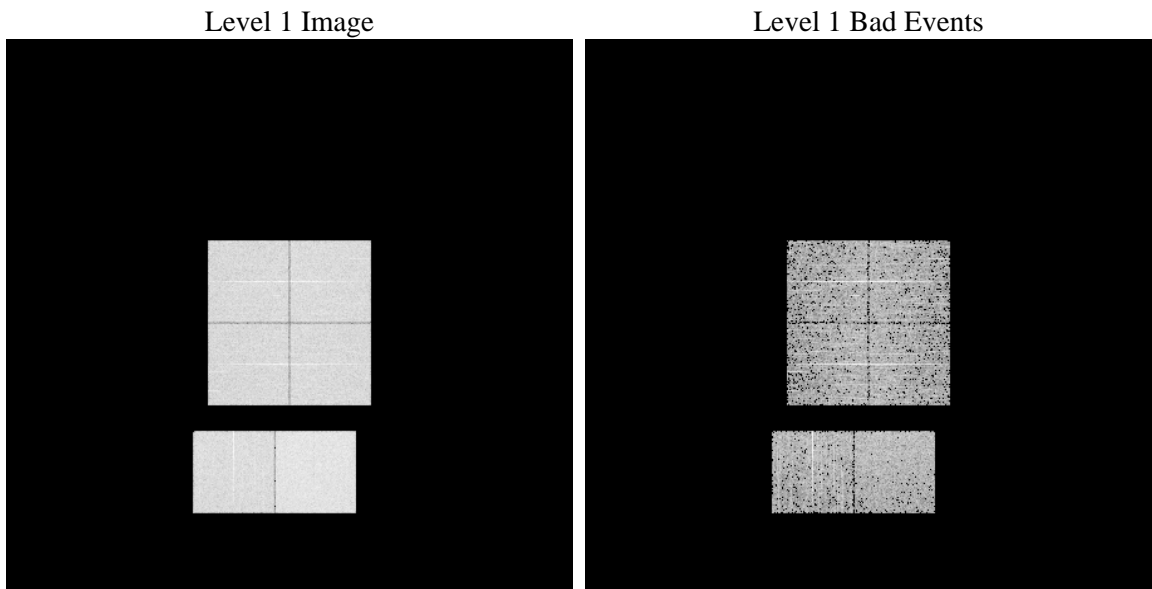
# 1 Front

seq_num	&#160	Sequence number
obs_id	60231	Observation id
title	ACIS-012367 diagnostics	Proposal title
observer	CHANDRA engineering request/realtime commanding	Principal investig
object	&#160	Source name
dtycle	0	&#160
cycle	P	events from which exps? Prim/Second/Both
ra_targ	0.0	Observer's specified target RA [deg]
dec_targ	0.0	Observer's specified target Dec [deg]
ra_nom	246.97177763187	Nominal RA [deg]
dec_nom	4.9943056927954	Nominal Dec [deg]
roll_nom	158.58979896802	Nominal Roll [deg]
revision	3	Processing version of data
ontime	3314.399821341	Sum of GTIs [s]
livetime	3272.4308951112	Livetime [s]
ontime0	2520.3207818568	Sum of GTIs [s]
ontime1	2627.2315611541	Sum of GTIs [s]
ontime2	2408.0753878355	Sum of GTIs [s]
ontime3	2498.8226857185	Sum of GTIs [s]
ontime6	2643.3542733788	Sum of GTIs [s]
ontime7	3314.399821341	Sum of GTIs [s]
l2events	483117	Number of level 2 events

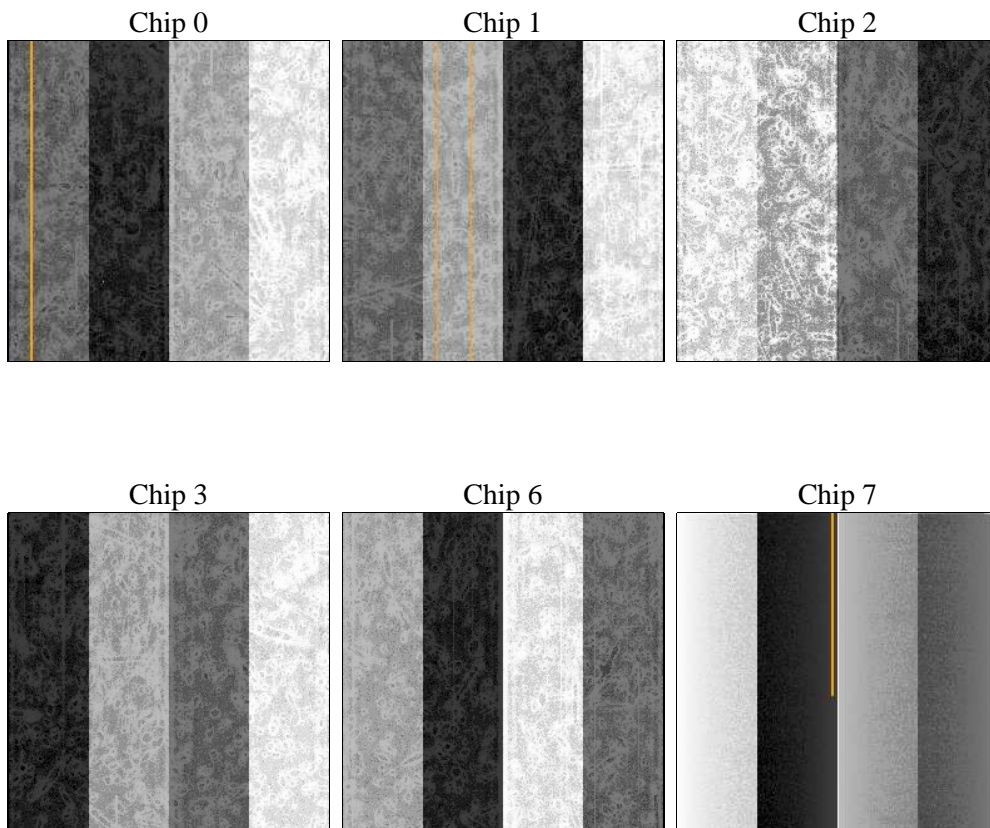
## 2 OBI

### 2.1 OBI

#### 2.1.1 Images



#### 2.1.2 Bias



### 2.1.3 Parameters

obi_num	0	Obi number	sched_exp_time	0.0	[s] Scheduled observation exposure time
ascdsver	8.4.5	Processing system revision	ontime	3314.399821341	Sum of GTIs [s]
caldsver	4.5.2	&#160	ontime0	2520.3207818568	Sum of GTIs [s]
date	2012-12-01T12:14:24	Date and time of file creation	ontime1	2627.2315611541	Sum of GTIs [s]
revision	3	Processing version of data	ontime2	2408.0753878355	Sum of GTIs [s]
			ontime3	2498.8226857185	Sum of GTIs [s]
			ontime6	2643.3542733788	Sum of GTIs [s]
			ontime7	3314.399821341	Sum of GTIs [s]
			l1events	617117	Number of level 1 events

### 2.1.4 Events

	ccd 0	ccd 1	ccd 2	ccd 3	ccd 6	ccd 7		ccd 0	ccd 1	ccd 2	ccd 3	ccd 6	ccd 7
level 1 events	94707	98577	92789	95030	104316	131698	grade 0 events	42350	44342	41901	43035	46039	27360
rejected events	17359	18006	17850	17829	19430	19693		44%	44%	45%	45%	44%	20%
rejected %	18%	18%	19%	18%	18%	14%	grade 1 events	243	250	262	275	255	84
								0%	0%	0%	0%	0%	0%
							grade 2 events	13604	14150	12716	13353	14715	24656
								14%	14%	13%	14%	14%	18%
							grade 3 events	5054	5079	4938	5085	5450	11242
								5%	5%	5%	5%	5%	8%
							grade 4 events	5120	5144	4839	5066	5274	11336
								5%	5%	5%	5%	5%	8%
							grade 5 events	1147	1239	1034	1245	1303	3682
								1%	1%	1%	1%	1%	2%
							grade 6 events	11220	11856	10545	10662	13408	37411
								11%	12%	11%	11%	12%	28%
							grade 7 events	15969	16517	16554	16309	17872	15927
								16%	16%	17%	17%	17%	12%

## 2.2 Compared Parameters

Parameter	Planned	Actual	Parameter	Planned	Actual
Instrument	ACIS	ACIS	Obspar format version number	7	7
Detector	ACIS-012367	ACIS-012367	Obspar file type	PREDICTED	ACTUAL
Grating	NONE	NONE	Obspar update status	NONE	UPDATED
Data mode	FAINT	FAINT	On-chip summing requested	N	N
Observation mode	SECONDARY	SECONDARY	Subarray requested	NONE	NONE
[deg] Pointing RA	0	246.9717776318743	Alternating exposures requested	N	N
[deg] Pointing Dec	0	4.9943056927954	[s] Primary exposure time	0.000000	3.2
[deg] Pointing Roll	0.0	158.5897989680241			
[mm] SIM focus pos	-0.782348	-0.6828225247311905			
[mm] SIM defocus	0	0.8505141146731063			
[mm] SIM translation stage pos	-233.592463	250.466033080201			
[mm] SIM translation stage offset	0	-0.01005468664627074			
[s] Observation start time (MET)	201271625.010343	201271623.98534			
Observation start date	2004-05-18T12:47:05	2004-05-18T12:47:03			
[s] Observation end time (MET)	201284320.660905	201284319.6359			
Observation end date	2004-05-18T16:18:41	2004-05-18T16:18:39			
Read mode	TIMED	TIMED			

## 2.3 Star Slots

## 2.4 FID Slots

## **A Summary**

### **A.1 Status**

V&V Scientist	Jen Lauer
V&V Date (YYYY-MM-DD)	2012.12.17
V&V Edition	1
V&V Disposition and Status	OK
V&V Charge Time	3.314399821341

### **A.2 Comments**