

# V&V Reference Report

## L2 ASCDS Version : 7.6.7.2

Observation 60215 - L2 Version <sub>e</sub>1  
Chandra X-Ray Center

L2 Processing Date : May 15 2006

## Contents

<b>1</b>	<b>Front</b>	<b>2</b>
<b>2</b>	<b>OBI Primary</b>	<b>3</b>
2.1	OBI . . . . .	3
2.1.1	Images . . . . .	3
2.1.2	Bias . . . . .	3
2.1.3	Parameters . . . . .	4
2.1.4	Events . . . . .	4
2.2	Compared Parameters . . . . .	5
2.3	Aspect . . . . .	6
2.4	Star Slots . . . . .	8
2.5	FID Slots . . . . .	8
<b>3</b>	<b>OBI Secondary</b>	<b>8</b>
3.1	OBI . . . . .	8
3.1.1	Images . . . . .	8
3.1.2	Bias . . . . .	8
3.1.3	Parameters . . . . .	9
3.1.4	Events . . . . .	9
<b>A</b>	<b>Summary</b>	<b>10</b>
A.1	Status . . . . .	10
A.2	Comments . . . . .	10

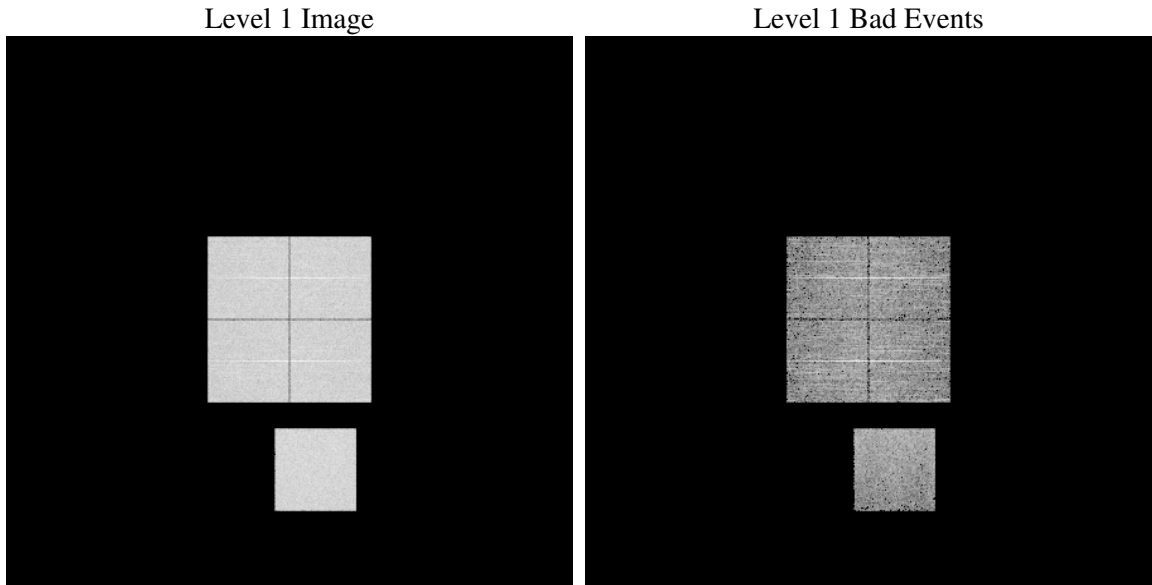
# 1 Front

seq_num	&#160
obs_id	60215
title	ACIS-01237 diagnostics
observer	CHANDRA engineering request/realtime commanding
object	&#160
dtcycle	0
cycle	P
ra_targ	0.0
dec_targ	0.0
ra_nom	114.00281094533
dec_nom	-18.029049810804
roll_nom	231.41424891602
revision	2
ontime	4399.2363321483
livetime	4348.2499950633
ontime0	4289.464092046
ontime1	4289.464092046
ontime2	4084.0837718546
ontime3	4169.0687319338
ontime7	4399.2363321483
l2events	618880

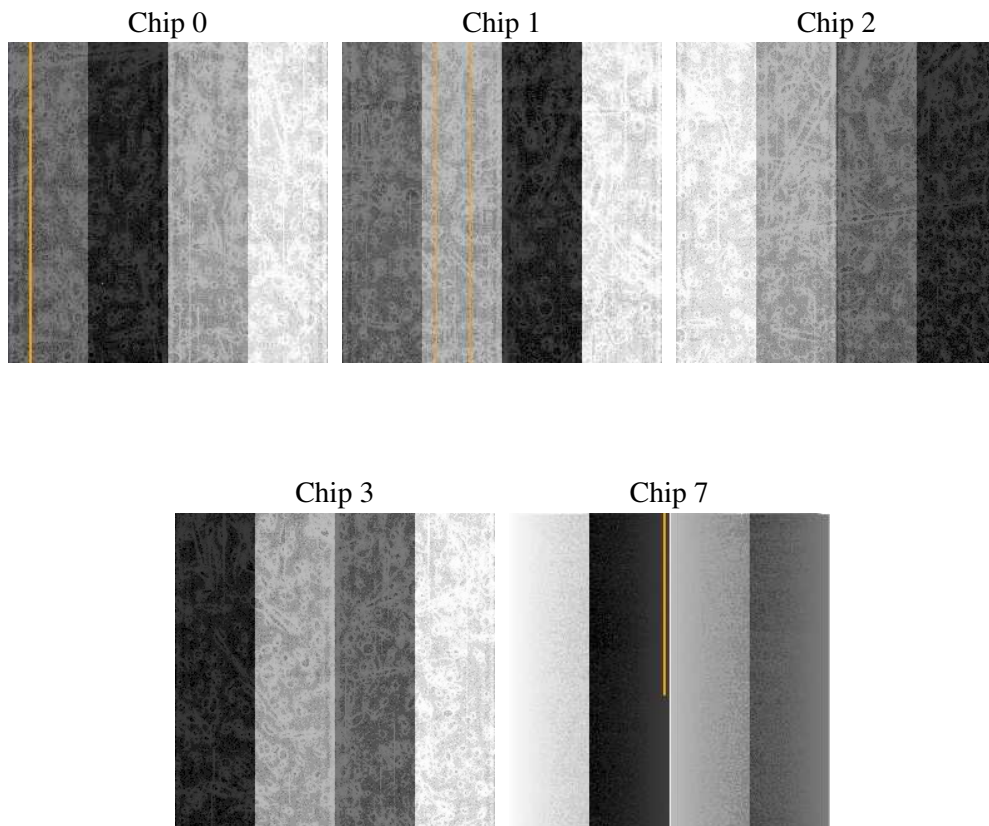
## 2 OBI Primary

### 2.1 OBI

#### 2.1.1 Images



#### 2.1.2 Bias



### 2.1.3 Parameters

obi_num	0
ascdsver	7.6.7.2
caldbver	3.2.2
date	2006-05-15T07:16:20
revision	2

sched_exp_time	0.0
ontime	4401.5127241015
ontime0	4291.7404839993
ontime1	4291.7404839993
ontime2	4086.3601638079
ontime3	4171.3451238871
ontime7	4401.5127241015
llevents	797911

### 2.1.4 Events

	ccd 0	ccd 1	ccd 2	ccd 3	ccd 7
level 1 events	156061	159193	154370	157074	171213
rejected events	27437	28792	30292	29663	31159
rejected %	17%	18%	19%	18%	18%

	ccd 0	ccd 1	ccd 2	ccd 3	ccd 7
grade 0 events	70602	71339	69436	71691	24247
	45%	44%	44%	45%	14%
grade 1 events	439	397	481	453	69
	0%	0%	0%	0%	0%
grade 2 events	22623	23145	20767	21921	42535
	14%	14%	13%	13%	24%
grade 3 events	8443	8261	8149	8269	10070
	5%	5%	5%	5%	5%
grade 4 events	8301	8375	8101	8208	9931
	5%	5%	5%	5%	5%
grade 5 events	1875	1898	1783	1983	3875
	1%	1%	1%	1%	2%
grade 6 events	18768	19383	17735	17419	53389
	12%	12%	11%	11%	31%
grade 7 events	25010	26395	27918	27130	27097
	16%	16%	18%	17%	15%

## 2.2 Compared Parameters

Parameter	Planned	Actual	Parameter	Planned	Actual
Instrument	ACIS	ACIS	Obspar format version number	6	6
Detector	ACIS-01237	ACIS-01237	Obspar file type	PREDICTED	ACTUAL
Grating	NONE	NONE	Obspar update status	NONE	UPDATED
Data mode	FAINT	FAINT	On-chip summing requested	N	N
Observation mode	SECONDARY	SECONDARY	Subarray requested	NONE	NONE
Pointing RA	0	114.0028109453296	Alternating exposures requested	N	Y
Pointing Dec	0	-18.02904981080363	Primary exposure time	0.000000	3.5
Pointing Roll	0.0	231.4142489160178	Secondary exposure time	N/A	3.2
SIM focus pos (mm)	-0.782348	-0.6828225247311905	Duty cycle	N/A	1
SIM defocus (mm)	0	0.8505141146731063			
SIM translation stage pos (mm)	-233.592463	250.4635187648994			
SIM translation stage offset (mm)	0	-0.007540371344731511			
Observation start time	202219053.052163	202219052.02718			
Observation start date	2004-05-29T11:57:33	2004-05-29T11:57:32			
Observation end time	202242162.703182	202242161.6782			
Observation end date	2004-05-29T18:22:43	2004-05-29T18:22:41			
Read mode	TIMED	TIMED			

## 2.3 Aspect



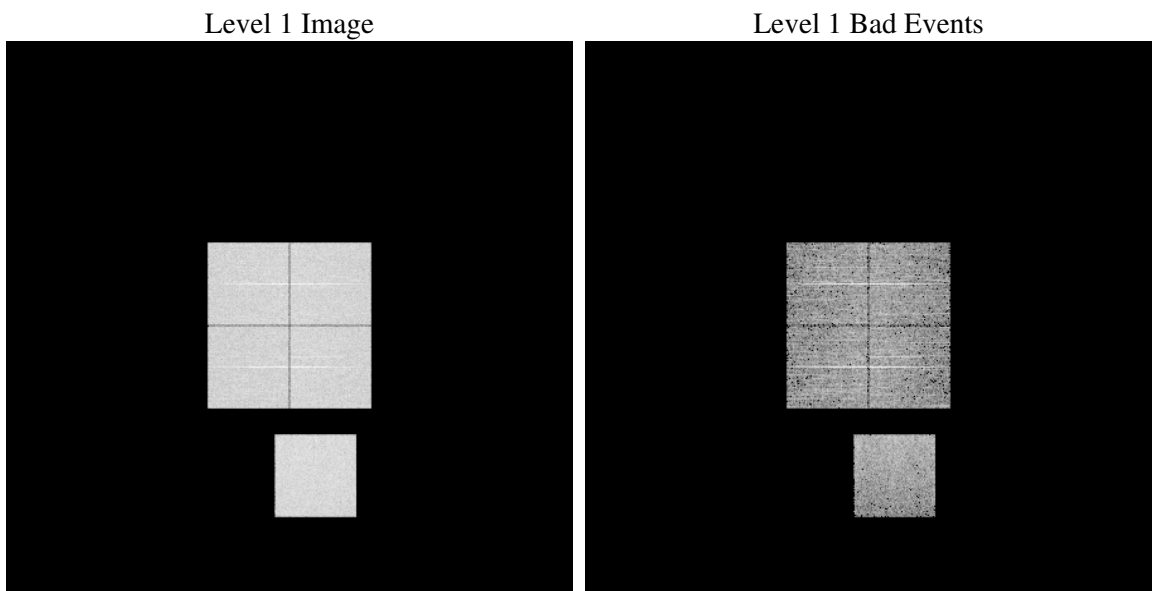
## 2.4 Star Slots

## 2.5 FID Slots

# 3 OBI Secondary

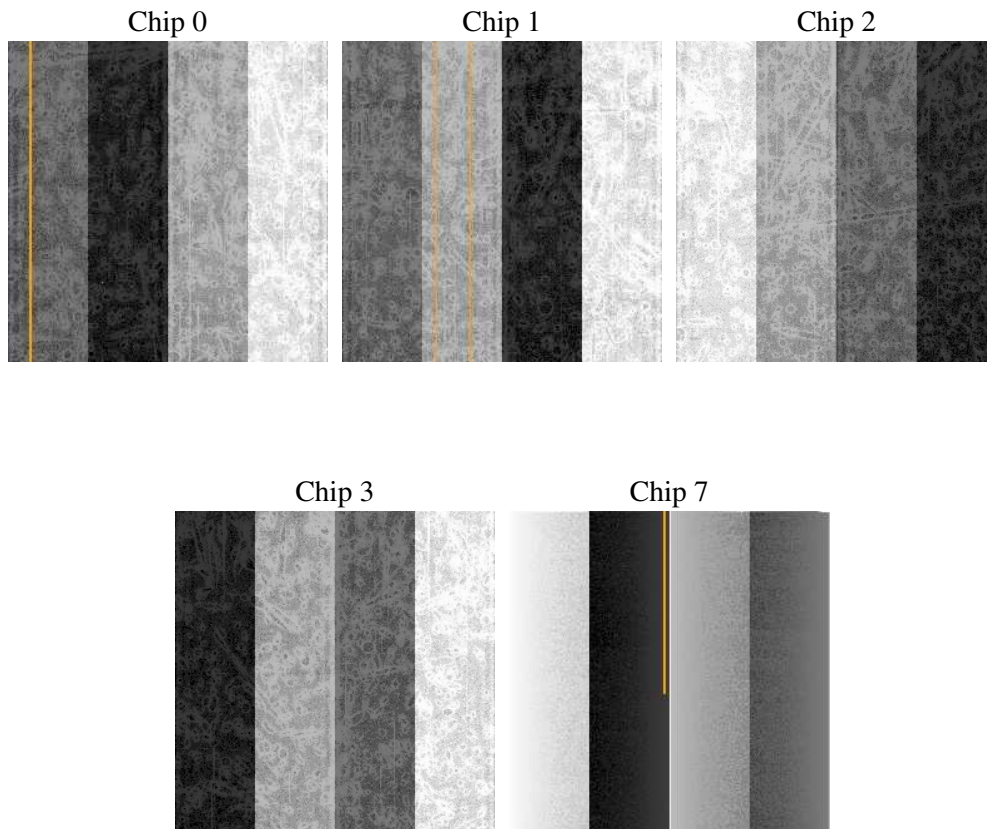
## 3.1 OBI

### 3.1.1 Images



### 3.1.2 Bias





### 3.1.3 Parameters

obi_num	0
ascdsver	7.6.7.2
caldsver	3.2.2
date	2006-05-15T07:16:31
revision	2

sched_exp_time	0.0
ontime	4028.6127092838
ontime0	3889.2479896545
ontime1	3876.283829689
ontime2	3629.9647903442
ontime3	3798.4988698959
ontime7	4028.6127092838
l1events	727334

### 3.1.4 Events

	ccd 0	ccd 1	ccd 2	ccd 3	ccd 7
level 1 events	143177	144122	137701	143751	158583
rejected events	26299	26451	27323	27085	29606
rejected %	18%	18%	19%	18%	18%

	ccd 0	ccd 1	ccd 2	ccd 3	ccd 7
grade 0 events	64404	64273	62180	65693	22070
	44%	44%	45%	45%	13%
grade 1 events	365	303	402	411	59
	0%	0%	0%	0%	0%
grade 2 events	20322	20967	18514	19686	39164
	14%	14%	13%	13%	24%
grade 3 events	7514	7505	7332	7611	9279
	5%	5%	5%	5%	5%
grade 4 events	7541	7437	7081	7700	9081
	5%	5%	5%	5%	5%
grade 5 events	1641	1759	1647	1825	3538
	1%	1%	1%	1%	2%
grade 6 events	17185	17585	15372	16080	49486
	12%	12%	11%	11%	31%
grade 7 events	24205	24293	25173	24745	25906
	16%	16%	18%	17%	16%

## A Summary

### A.1 Status

V&V Scientist	Jen Lauer
V&V Date (YYYY-MM-DD)	2006.05.15
V&V Edition	1
V&V Disposition and Status	OK
V&V Charge Time	8.42587267

### A.2 Comments