

V&V Reference Report

L2 ASCDS Version : 8.5

Observation 60106 - L2 Version 4
Chandra X-Ray Center

L2 Processing Date : Dec 7 2012

Contents

1	Front	2
2	OBI	3
2.1	OBI	3
2.1.1	Images	3
2.1.2	Bias	3
2.1.3	Parameters	4
2.1.4	Events	4
2.2	Compared Parameters	5
2.3	Star Slots	6
2.4	FID Slots	6
A	Summary	7
A.1	Status	7
A.2	Comments	7

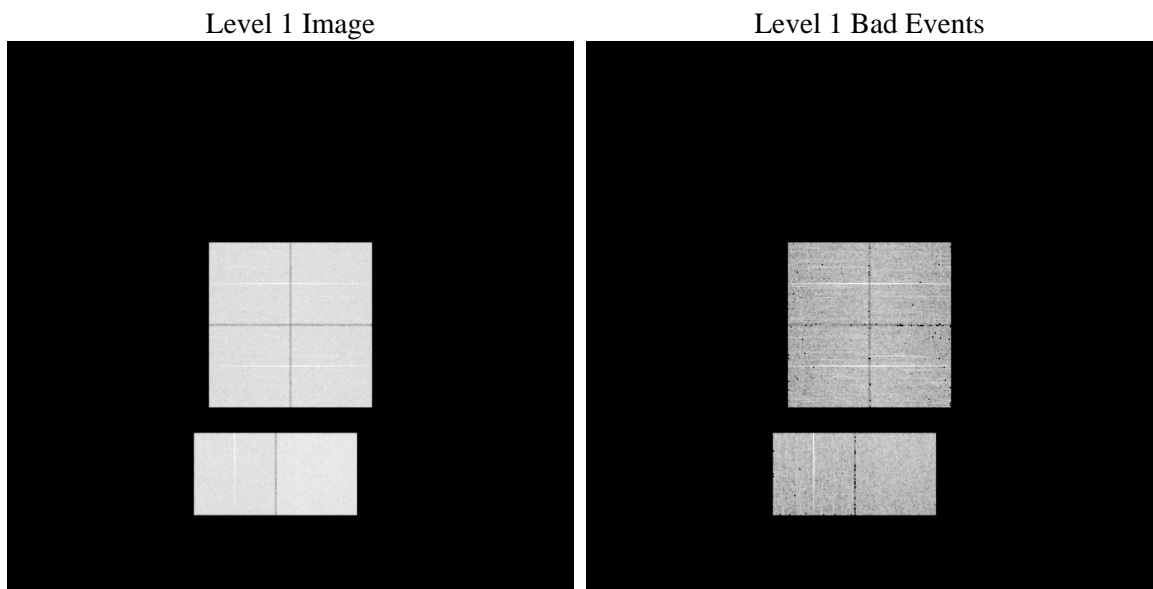
1 Front

seq_num	 	Sequence number
obs_id	60106	Observation id
title	ACIS-012367 diagnostics	Proposal title
observer	CHANDRA engineering request/realtime commanding	Principal investig
object	 	Source name
dtcycle	0	
cycle	P	events from which exps? Prim/Second/Both
ra_targ	0.0	Observer's specified target RA [deg]
dec_targ	0.0	Observer's specified target Dec [deg]
ra_nom	351.97763626775	Nominal RA [deg]
dec_nom	-7.9817253098345	Nominal Dec [deg]
roll_nom	107.56348466926	Nominal Roll [deg]
revision	4	Processing version of data
ontime	7743.1524841189	Sum of GTIs [s]
livetime	7645.1040249984	Livetime [s]
ontime0	6089.8683171868	Sum of GTIs [s]
ontime1	6248.9795840085	Sum of GTIs [s]
ontime2	5918.0958451927	Sum of GTIs [s]
ontime3	5983.3428598344	Sum of GTIs [s]
ontime6	6560.031391114	Sum of GTIs [s]
ontime7	7743.1524841189	Sum of GTIs [s]
l2events	1098785	Number of level 2 events

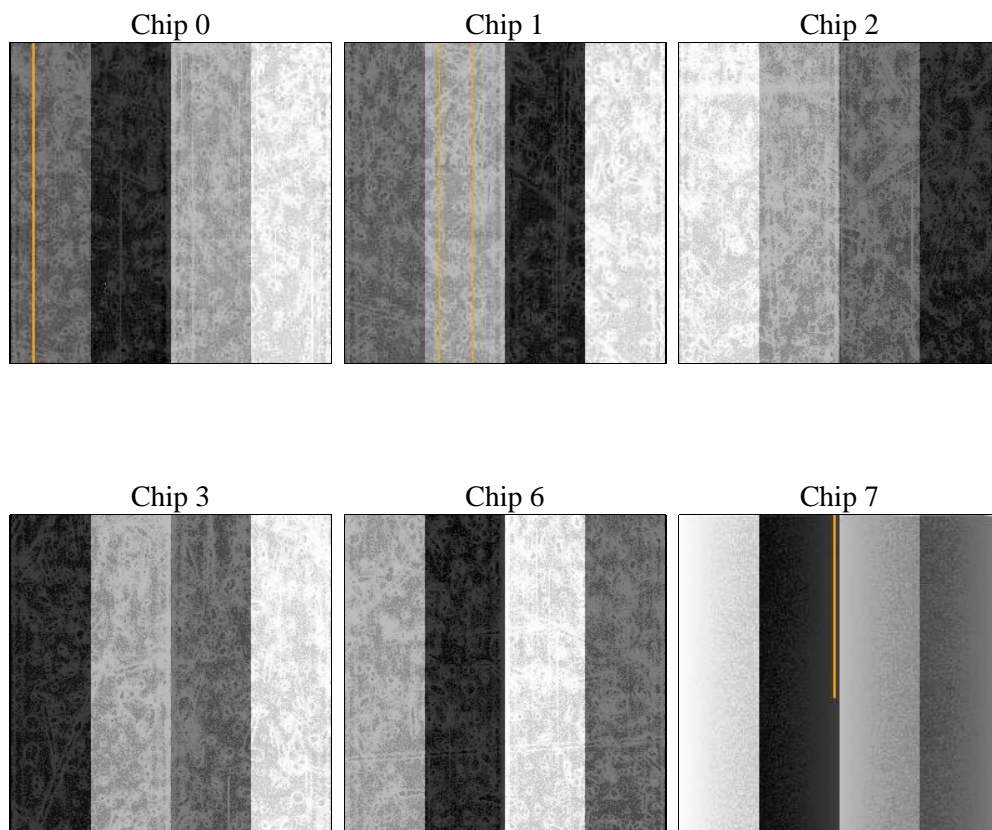
2 OBI

2.1 OBI

2.1.1 Images



2.1.2 Bias



2.1.3 Parameters

obi_num	5	Obi number	sched_exp_time	6420	[s] Scheduled observation exposure time
ascdsver	8.5	Processing system revision	ontime	7743.1524841189	Sum of GTIs [s]
caldsver	4.5.4	 	ontime0	6089.8683171868	Sum of GTIs [s]
date	2012-12-07T05:20:32	Date and time of file creation	ontime1	6248.9795840085	Sum of GTIs [s]
revision	4	Processing version of data	ontime2	5918.0958451927	Sum of GTIs [s]
			ontime3	5983.3428598344	Sum of GTIs [s]
			ontime6	6560.031391114	Sum of GTIs [s]
			ontime7	7743.1524841189	Sum of GTIs [s]
			l1events	1413105	Number of level 1 events

2.1.4 Events

	ccd 0	ccd 1	ccd 2	ccd 3	ccd 6	ccd 7		ccd 0	ccd 1	ccd 2	ccd 3	ccd 6	ccd 7
level 1 events	216986	223271	216139	219559	244088	293062	grade 0 events	97535	99695	98183	99174	109458	60974
rejected events	40721	41905	42076	44067	44444	46326		44%	44%	45%	45%	44%	20%
rejected %	18%	18%	19%	20%	18%	15%	grade 1 events	534	508	591	612	510	186
								0%	0%	0%	0%	0%	0%
							grade 2 events	31076	32734	29856	30335	35037	54754
								14%	14%	13%	13%	14%	18%
							grade 3 events	11403	11614	11530	11542	12456	25026
								5%	5%	5%	5%	5%	8%
							grade 4 events	11484	11721	11440	11484	12308	24852
								5%	5%	5%	5%	5%	8%
							grade 5 events	2545	2658	2467	2846	2964	8178
								1%	1%	1%	1%	1%	2%
							grade 6 events	25921	26923	24090	24178	31921	83031
								11%	12%	11%	11%	13%	28%
							grade 7 events	36488	37418	37982	39388	39434	36061
								16%	16%	17%	17%	16%	12%

2.2 Compared Parameters

Parameter	Planned	Actual
Instrument	ACIS	ACIS
Detector	ACIS-012367	ACIS-012367
Grating	NONE	NONE
Data mode	FAINT	FAINT
Observation mode	SECONDARY	SECONDARY
[deg] Pointing RA	351.9776447006048	351.9776362677501
[deg] Pointing Dec	-7.981751802532835	-7.981725309834534
[deg] Pointing Roll	107.5634858326823	107.5634846692562
[mm] SIM focus pos	-0.68282252473119	-0.68282252473119
[mm] SIM defocus	0.8505140384245534	0.8505140384245534
[mm] SIM translation stage pos	250.4660330802	250.4660330802
[mm] SIM translation stage offset	-0.01005726120527584	-0.01005726120527584
[s] Observation start time (MET)	208115226.41361	208115226.41361
Observation start date	2004-08-05T18:05:00	2004-08-05T17:47:06
[s] Observation end time (MET)	208124745.186174	208124745.186174
Observation end date	2004-08-05T19:52:00	2004-08-05T20:25:45
Read mode	TIMED	TIMED

Parameter	Planned	Actual
Obspar format version number	7	7
Obspar file type	PREDICTED	ACTUAL
Obspar update status	OVERRIDE	OVERRIDE
Number of optional ACIS chips dropped	0	0
On-chip summing requested	N	N
Subarray requested	NONE	NONE
Alternating exposures requested	N	N
[s] Primary exposure time	3.2	3.2

2.3 Star Slots

2.4 FID Slots

A Summary

A.1 Status

V&V Scientist	Beth Sundheim
V&V Date (YYYY-MM-DD)	2012.12.26
V&V Edition	1
V&V Disposition and Status	OK
V&V Charge Time	7.7431524841189

A.2 Comments