

V&V Reference Report

L2 ASCDS Version : 7.6.11.10

Observation 60106 - L2 Version 3
Chandra X-Ray Center

L2 Processing Date : Feb 4 2009

Contents

1	Front	2
2	OBI	3
2.1	OBI	3
2.1.1	Images	3
2.1.2	Bias	3
2.1.3	Parameters	4
2.1.4	Events	4
2.2	Compared Parameters	5
2.3	Star Slots	6
2.4	FID Slots	6
A	Summary	7
A.1	Status	7
A.2	Comments	7

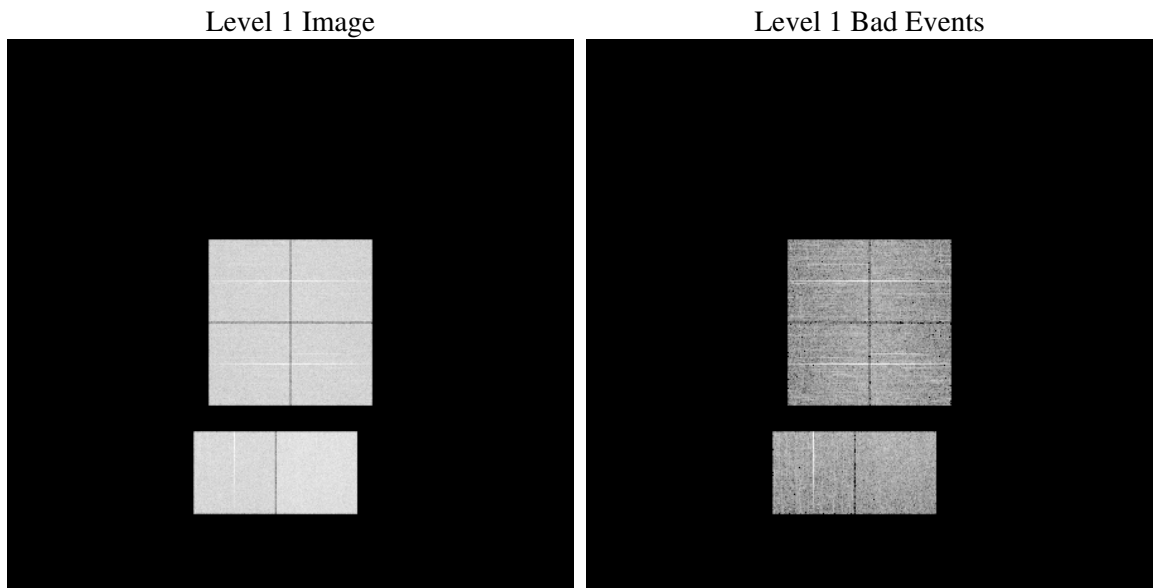
1 Front

seq_num	
obs_id	60106
title	ACIS-012367 diagnostics
observer	CHANDRA engineering request/realtime commanding
object	
dtcycle	0
cycle	P
ra_targ	0.0
dec_targ	0.0
ra_nom	351.9776447006
dec_nom	-7.9817518025328
roll_nom	107.56348583268
revision	3
ontime	7743.9999711514
livetime	7645.9407806397
ontime0	6089.1568442285
ontime1	6249.9091510475
ontime2	5917.4664522409
ontime3	5984.1493068635
ontime6	6561.0430381298
ontime7	7743.9999711514
l2events	1099239

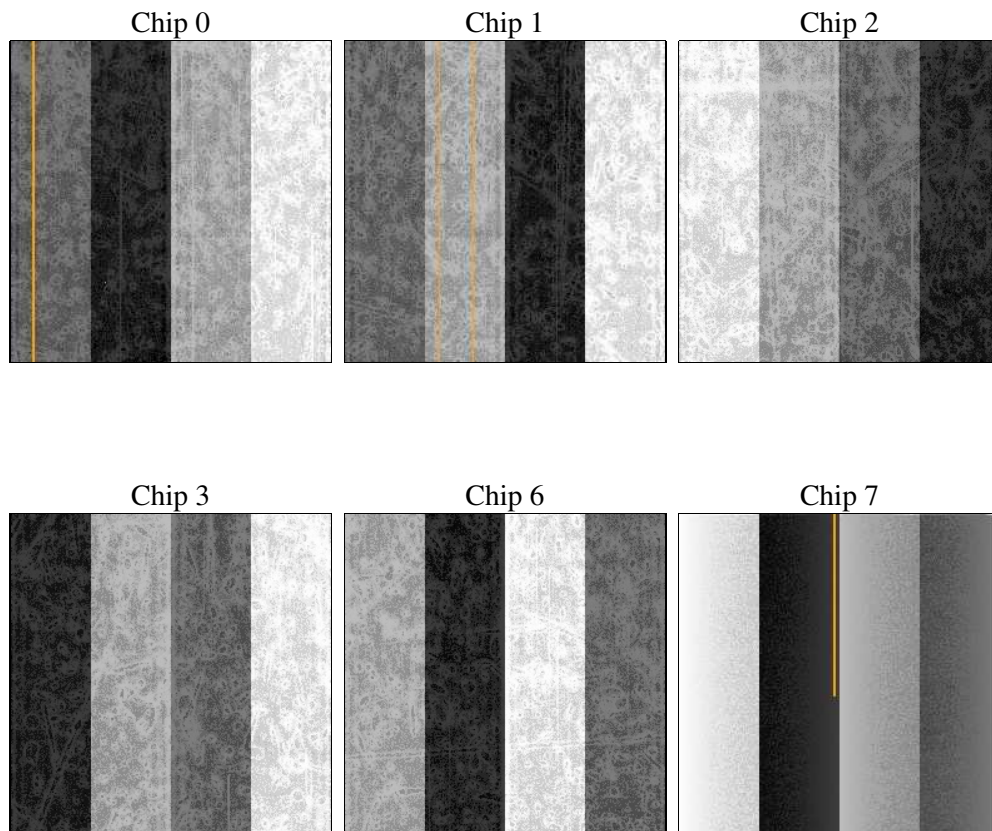
2 OBI

2.1 OBI

2.1.1 Images



2.1.2 Bias



2.1.3 Parameters

obi_num	5
ascdsver	7.6.11.10
caldsver	3.5.1
date	2009-02-04T14:43:51
revision	3

sched_exp_time	6420
ontime	7743.9999711514
ontime0	6089.1568442285
ontime1	6249.9091510475
ontime2	5917.4664522409
ontime3	5984.1493068635
ontime6	6561.0430381298
ontime7	7743.9999711514
l1events	1413105

2.1.4 Events

	ccd 0	ccd 1	ccd 2	ccd 3	ccd 6	ccd 7
level 1 events	216986	223271	216139	219559	244088	293062
rejected events	40721	41829	42076	43975	44332	46223
rejected %	18%	18%	19%	20%	18%	15%

	ccd 0	ccd 1	ccd 2	ccd 3	ccd 6	ccd 7
grade 0 events	97535	99695	98183	99174	109458	60974
	44%	44%	45%	45%	44%	20%
grade 1 events	534	508	591	612	510	186
	0%	0%	0%	0%	0%	0%
grade 2 events	31076	32735	29856	30335	35037	54754
	14%	14%	13%	13%	14%	18%
grade 3 events	11402	11614	11531	11542	12456	25026
	5%	5%	5%	5%	5%	8%
grade 4 events	11483	11721	11440	11484	12308	24852
	5%	5%	5%	5%	5%	8%
grade 5 events	2545	2658	2467	2846	2965	8178
	1%	1%	1%	1%	1%	2%
grade 6 events	25923	26923	24089	24178	31920	83032
	11%	12%	11%	11%	13%	28%
grade 7 events	36488	37417	37982	39388	39434	36060
	16%	16%	17%	17%	16%	12%

2.2 Compared Parameters

Parameter	Planned	Actual	Parameter	Planned	Actual
Instrument	ACIS	ACIS	Obspar format version number	6	6
Detector	ACIS-012367	ACIS-012367	Obspar file type	PREDICTED	ACTUAL
Grating	NONE	NONE	Obspar update status	OVERRIDE	OVERRIDE
Data mode	FAINT	FAINT	Number of optional ACIS chips dropped	0	0
Observation mode	SECONDARY	SECONDARY	On-chip summing requested	N	N
Pointing RA	351.9776447006048	351.9776447006048	Subarray requested	NONE	NONE
Pointing Dec	-7.981751802532835	-7.981751802532835	Alternating exposures requested	N	N
Pointing Roll	107.5634858326823	107.5634858326823	Primary exposure time	3.2	3.2
SIM focus pos (mm)	-0.68282252473119	-0.68282252473119			
SIM defocus (mm)	0.8505140384245534	0.8505140384245534			
SIM translation stage pos (mm)	250.4660330802	250.4660330802			
SIM translation stage offset (mm)	-0.01005726120527584	-0.01005726120527584			
Observation start time	208115226.41361	208115226.41361			
Observation start date	2004-08-05T18:05:00	2004-08-05T17:47:06			
Observation end time	208124745.186174	208124745.186174			
Observation end date	2004-08-05T19:52:00	2004-08-05T20:25:45			
Read mode	TIMED	TIMED			

2.3 Star Slots

2.4 FID Slots

A Summary

A.1 Status

V&V Scientist	Beth Sundheim
V&V Date (YYYY-MM-DD)	2009.02.05
V&V Edition	1
V&V Disposition and Status	OK
V&V Charge Time	7.74399997

A.2 Comments

This obsid was reprocessed to correct minor errors in parameters used in processing. Some of these parameters cannot be determined automatically for this observation and were derived from spacecraft telemetry.