

V&V Reference Report

L2 ASCDS Version : 7.6.7.2

Observation 60087 - L2 Version 001
Chandra X-Ray Center

L2 Processing Date : Apr 25 2006

Contents

1	Front	2
2	OBI	3
2.1	OBI	3
2.1.1	Images	3
2.1.2	Bias	3
2.1.3	Parameters	4
2.1.4	Events	4
2.2	Compared Parameters	5
2.3	Aspect	6
2.4	Star Slots	8
2.5	FID Slots	8
A	Summary	9
A.1	Status	9
A.2	Comments	9

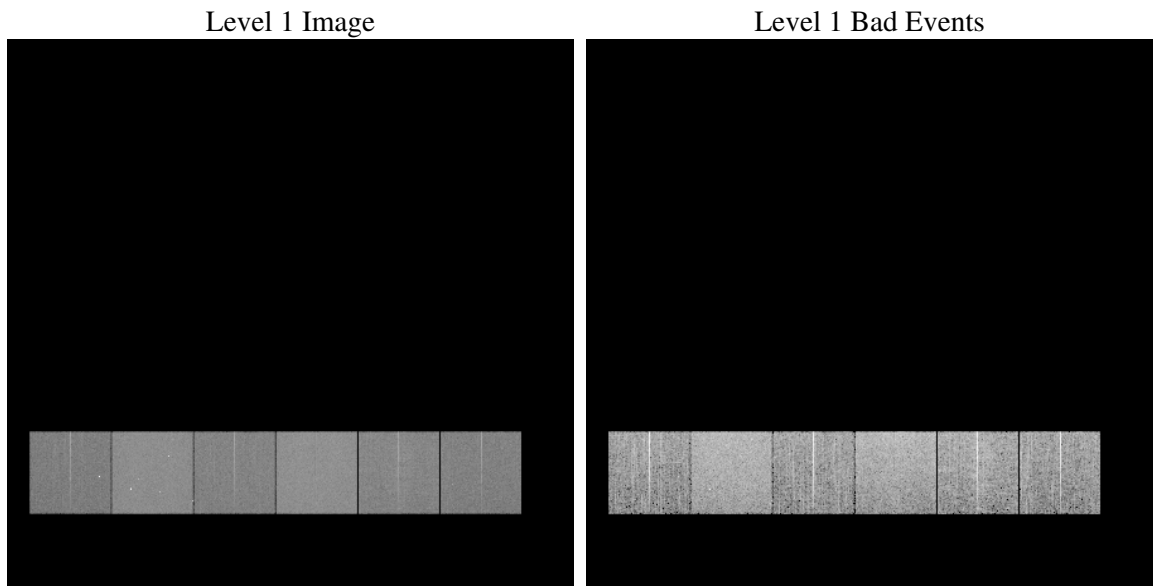
1 Front

seq_num	
obs_id	60087
title	ACIS-456789 diagnostics
observer	CHANDRA engineering request/realtime commanding
object	
dtcycle	0
cycle	P
ra_targ	0.0
dec_targ	0.0
ra_nom	338.77861845484
dec_nom	-9.9806371599502
roll_nom	104.47739283015
revision	2
ontime	7800.3162799478
livetime	7701.5439784245
ontime4	5159.0375579894
ontime5	7800.3573199511
ontime6	5658.1093731821
ontime7	7800.3162799478
ontime8	5923.9521359205
ontime9	5515.3822253644
l2events	1054154

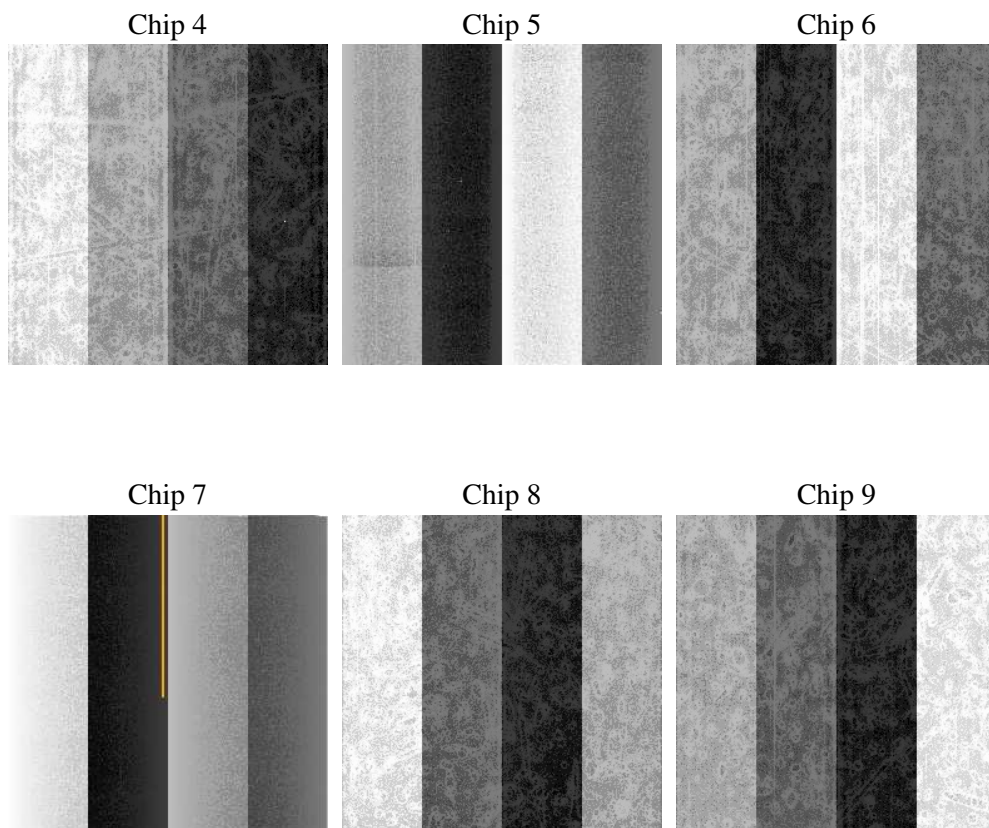
2 OBI

2.1 OBI

2.1.1 Images



2.1.2 Bias



2.1.3 Parameters

obi_num	1
ascdsver	7.6.7.2
caldsver	3.2.1
date	2006-04-25T08:50:14
revision	2

sched_exp_time	0.0
ontime	7801.1099571586
ontime4	5159.7081151903
ontime5	7801.1099571586
ontime6	5658.8209703863
ontime7	7801.1099571586
ontime8	5924.5816531479
ontime9	5516.2169425786
l1events	1412635

2.1.4 Events

	ccd 4	ccd 5	ccd 6	ccd 7	ccd 8	ccd 9
level 1 events	187284	278900	214908	296553	232833	202157
rejected events	41947	60443	43623	56364	49569	42567
rejected %	22%	21%	20%	19%	21%	21%

	ccd 4	ccd 5	ccd 6	ccd 7	ccd 8	ccd 9
grade 0 events	84357	27349	93344	42866	99416	87696
	45%	9%	43%	14%	42%	43%
grade 1 events	699	239	470	130	527	535
	0%	0%	0%	0%	0%	0%
grade 2 events	23367	100488	29713	71656	32497	27286
	12%	36%	13%	24%	13%	13%
grade 3 events	9585	7387	10684	17609	12110	10141
	5%	2%	4%	5%	5%	5%
grade 4 events	9572	7292	10698	17577	12057	10246
	5%	2%	4%	5%	5%	5%
grade 5 events	2480	6330	2805	6854	3404	2897
	1%	2%	1%	2%	1%	1%
grade 6 events	18456	75941	26846	90481	27184	24221
	9%	27%	12%	30%	11%	11%
grade 7 events	38768	53874	40348	49380	45638	39135
	20%	19%	18%	16%	19%	19%

2.2 Compared Parameters

Parameter	Planned	Actual	Parameter	Planned	Actual
Instrument	ACIS	ACIS	Obspar format version number	6	6
Detector	ACIS-456789	ACIS-456789	Obspar file type	PREDICTED	ACTUAL
Grating	NONE	NONE	Obspar update status	NONE	UPDATED
Data mode	FAINT	FAINT	On-chip summing requested	N	N
Observation mode	SECONDARY	SECONDARY	Subarray requested	NONE	NONE
Pointing RA	0	338.7786184548361	Alternating exposures requested	N	N
Pointing Dec	0	-9.9806371599502	Primary exposure time	3.2	3.2
Pointing Roll	0.0	104.47739283015			
SIM focus pos (mm)	-0.684267	-0.6828225247311905			
SIM defocus (mm)	0	0.8505141146731063			
SIM translation stage pos (mm)	-190.132523	250.4635187648994			
SIM translation stage offset (mm)	0	-0.007540371344731511			
Observation start time	209485999.97454	209485998.94955			
Observation start date	2004-08-21T14:33:20	2004-08-21T14:33:18			
Observation end time	209508492.57554	209508491.55055			
Observation end date	2004-08-21T20:48:13	2004-08-21T20:48:11			
Read mode	TIMED	TIMED			

2.3 Aspect

2.4 Star Slots

2.5 FID Slots

A Summary

A.1 Status

V&V Scientist	Jen Lauer
V&V Date (YYYY-MM-DD)	2006.04.25
V&V Edition	1
V&V Disposition and Status	OK
V&V Charge Time	7.80031627

A.2 Comments