

V&V Reference Report

L2 ASCDS Version : 8.5

Observation 60079 - L2 Version 3
Chandra X-Ray Center

L2 Processing Date : Dec 8 2012

Contents

1	Front	2
2	OBI	3
2.1	OBI	3
2.1.1	Images	3
2.1.2	Bias	3
2.1.3	Parameters	4
2.1.4	Events	4
2.2	Compared Parameters	5
2.3	Star Slots	6
2.4	FID Slots	6
A	Summary	7
A.1	Status	7
A.2	Comments	7

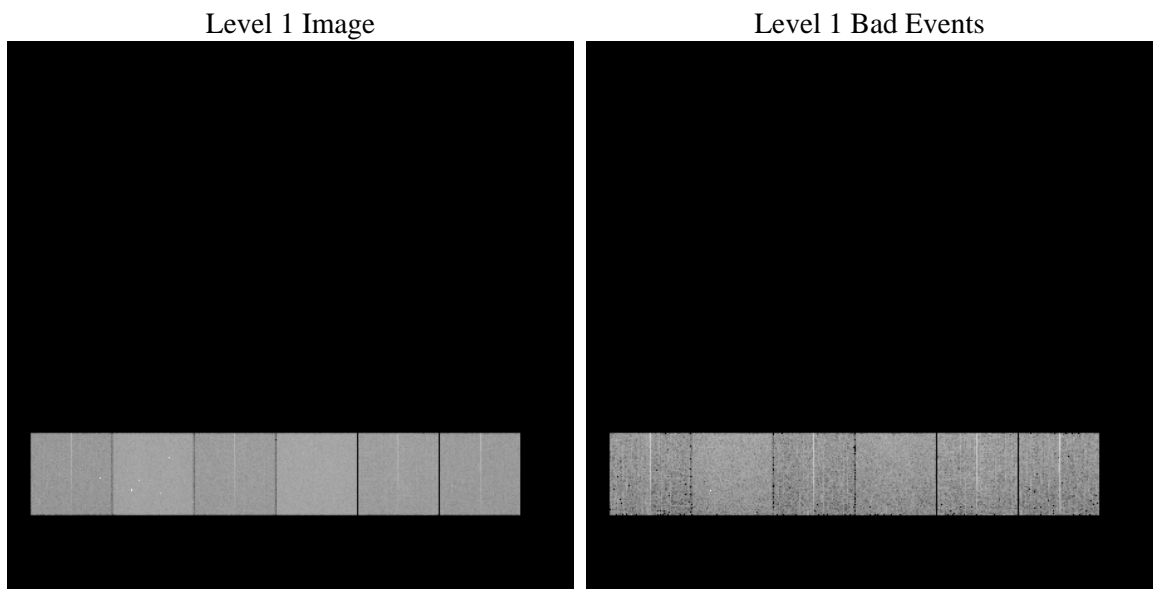
1 Front

seq_num	 	Sequence number
obs_id	60079	Observation id
title	ACIS-456789 diagnostics	Proposal title
observer	CHANDRA engineering request/realtime commanding	Principal investig
object	 	Source name
dtcycle	0	
cycle	P	events from which exps? Prim/Second/Both
ra_targ	0.0	Observer's specified target RA [deg]
dec_targ	0.0	Observer's specified target Dec [deg]
ra_nom	287.99621569855	Nominal RA [deg]
dec_nom	42.971461284735	Nominal Dec [deg]
roll_nom	231.66300021282	Nominal Roll [deg]
revision	3	Processing version of data
ontime	6446.8009360135	Sum of GTIs [s]
livetime	6365.1676607642	Livetime [s]
ontime4	4297.9155956507	Sum of GTIs [s]
ontime5	6446.7598960102	Sum of GTIs [s]
ontime6	4725.7655868828	Sum of GTIs [s]
ontime7	6446.8009360135	Sum of GTIs [s]
ontime8	4871.5273481607	Sum of GTIs [s]
ontime9	4567.0808756351	Sum of GTIs [s]
l2events	882747	Number of level 2 events

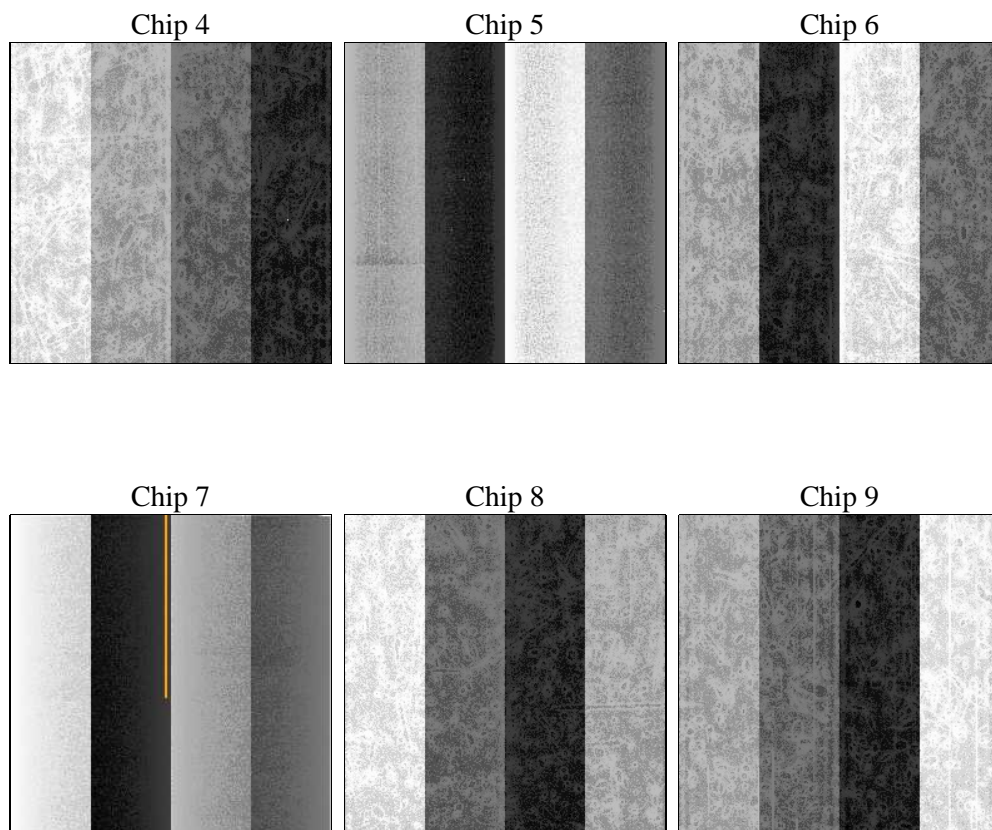
2 OBI

2.1 OBI

2.1.1 Images



2.1.2 Bias



2.1.3 Parameters

obi_num	0	Obi number	sched_exp_time	0.0	[s] Scheduled observation exposure time
ascdsver	8.5	Processing system revision	ontime	6446.8009360135	Sum of GTIs [s]
caldsver	4.5.4	 	ontime4	4297.9155956507	Sum of GTIs [s]
date	2012-12-08T08:49:04	Date and time of file creation	ontime5	6446.7598960102	Sum of GTIs [s]
revision	3	Processing version of data	ontime6	4725.7655868828	Sum of GTIs [s]
			ontime7	6446.8009360135	Sum of GTIs [s]
			ontime8	4871.5273481607	Sum of GTIs [s]
			ontime9	4567.0808756351	Sum of GTIs [s]
			l1events	1172113	Number of level 1 events

2.1.4 Events

	ccd 4	ccd 5	ccd 6	ccd 7	ccd 8	ccd 9		ccd 4	ccd 5	ccd 6	ccd 7	ccd 8	ccd 9
level 1 events	156585	231863	177674	245005	192200	168786	grade 0 events	69868	42368	77755	50066	80985	72858
rejected events	36131	45839	35264	39750	42910	36519		44%	18%	43%	20%	42%	43%
rejected %	23%	19%	19%	16%	22%	21%	grade 1 events	545	538	390	139	438	461
								0%	0%	0%	0%	0%	0%
							grade 2 events	19192	66081	24620	45718	26198	22866
								12%	28%	13%	18%	13%	13%
							grade 3 events	7990	11197	8884	20454	9858	8566
								5%	4%	5%	8%	5%	5%
							grade 4 events	8235	11116	8766	20449	9896	8450
								5%	4%	4%	8%	5%	5%
							grade 5 events	1970	7346	2356	7111	2882	2401
								1%	3%	1%	2%	1%	1%
							grade 6 events	15279	55361	22480	68672	22455	19616
								9%	23%	12%	28%	11%	11%
							grade 7 events	33506	37856	32423	32396	39488	33568
								21%	16%	18%	13%	20%	19%

2.2 Compared Parameters

Parameter	Planned	Actual
Instrument	ACIS	ACIS
Detector	ACIS-456789	ACIS-456789
Grating	NONE	NONE
Data mode	FAINT	FAINT
Observation mode	SECONDARY	SECONDARY
[deg] Pointing RA	0	287.9962156985539
[deg] Pointing Dec	0	42.97146128473547
[deg] Pointing Roll	0.0	231.663000212819
[mm] SIM focus pos	-0.684267	-0.6828225247311905
[mm] SIM defocus	0	0.8505141146731063
[mm] SIM translation stage pos	-190.132523	250.466033080201
[mm] SIM translation stage offset	0	-0.01005468664627074
[s] Observation start time (MET)	209947434.495088	209947433.4701
Observation start date	2004-08-26T22:43:54	2004-08-26T22:43:53
[s] Observation end time (MET)	209955236.795435	209955235.77045
Observation end date	2004-08-27T00:53:57	2004-08-27T00:53:55
Read mode	TIMED	TIMED

Parameter	Planned	Actual
Obspar format version number	7	7
Obspar file type	PREDICTED	ACTUAL
Obspar update status	NONE	UPDATED
On-chip summing requested	N	N
Subarray requested	NONE	NONE
Alternating exposures requested	N	N
[s] Primary exposure time	3.2	3.2

2.3 Star Slots

2.4 FID Slots

A Summary

A.1 Status

V&V Scientist	Beth Sundheim
V&V Date (YYYY-MM-DD)	2012.12.13
V&V Edition	1
V&V Disposition and Status	OK
V&V Charge Time	6.4468009360135

A.2 Comments