

V&V Reference Report

L2 ASCDS Version : 7.6.7.1

Observation 60021 - L2 Version 001
Chandra X-Ray Center

L2 Processing Date : Apr 17 2006

Contents

1	Front	2
2	OBI	3
2.1	OBI	3
2.1.1	Images	3
2.1.2	Bias	3
2.1.3	Parameters	4
2.1.4	Events	4
2.2	Compared Parameters	5
2.3	Aspect	6
2.4	Star Slots	8
2.5	FID Slots	8
A	Summary	9
A.1	Status	9
A.2	Comments	9

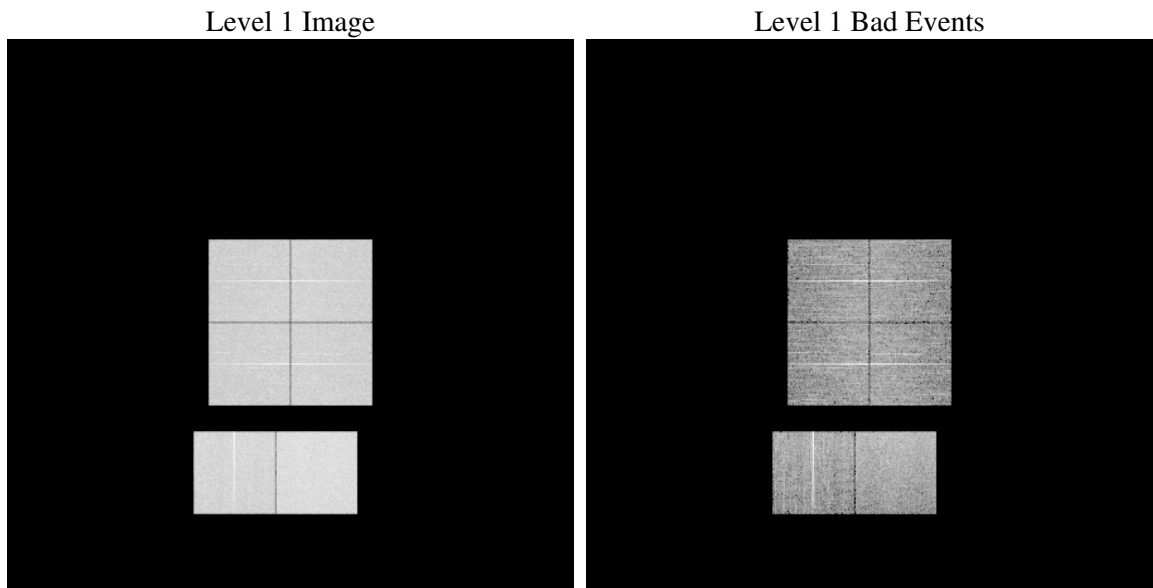
1 Front

seq_num	
obs_id	60021
title	ACIS-012367 diagnostics
observer	CHANDRA engineering request/realtime commanding
object	
dtcycle	0
cycle	P
ra_targ	0.0
dec_targ	0.0
ra_nom	13.018207118427
dec_nom	-7.9778260958209
roll_nom	17.938589875875
revision	2
ontime	7801.1841624379
livetime	7702.400871264
ontime0	6177.4930192828
ontime1	6365.5111053884
ontime2	5963.6702908576
ontime3	6135.2785546184
ontime6	6660.5227311254
ontime7	7801.1841624379
l2events	1067288

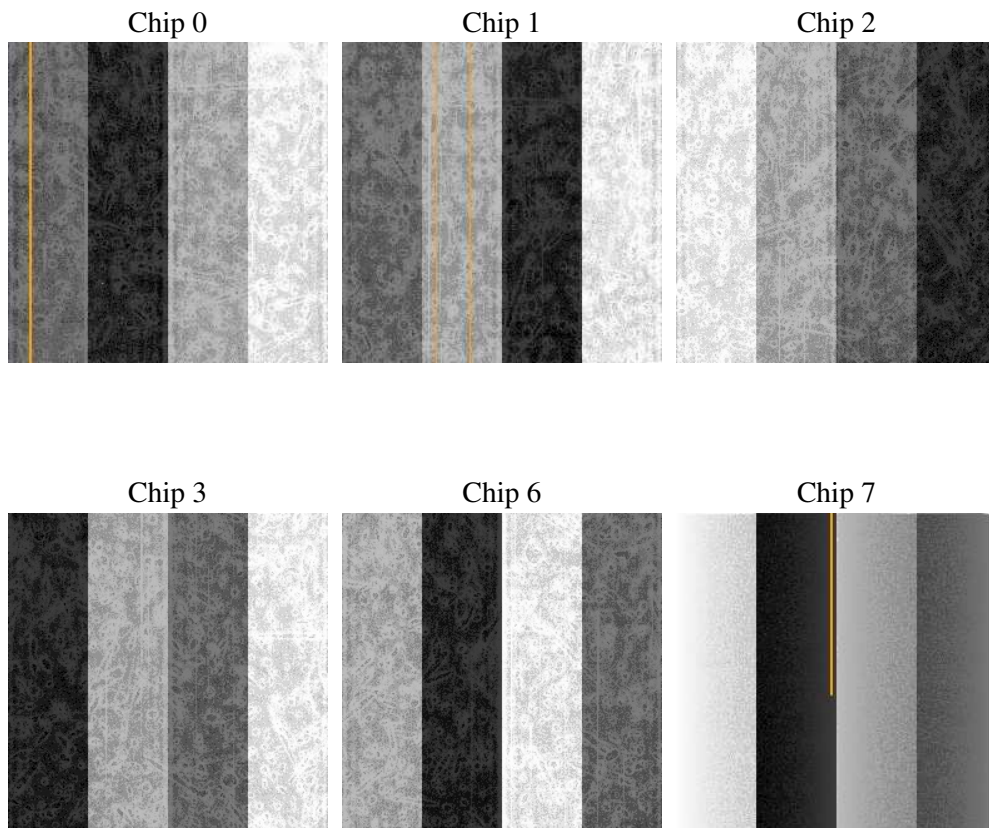
2 OBI

2.1 OBI

2.1.1 Images



2.1.2 Bias



2.1.3 Parameters

obi_num	0
ascdsver	7.6.7.1
caldsver	3.2.1
date	2006-04-17T04:22:03
revision	2

sched_exp_time	0.0
ontime	7804.3520985246
ontime0	6180.6199153662
ontime1	6368.5969614685
ontime2	5966.7151069343
ontime3	6138.4875307083
ontime6	6663.5265072286
ontime7	7804.3520985246
l1events	1413804

2.1.4 Events

	ccd 0	ccd 1	ccd 2	ccd 3	ccd 6	ccd 7
level 1 events	217357	222581	213578	220124	247354	292810
rejected events	44832	45213	45580	46707	51612	58769
rejected %	20%	20%	21%	21%	20%	20%

	ccd 0	ccd 1	ccd 2	ccd 3	ccd 6	ccd 7
grade 0 events	95047	97072	93935	96954	105984	40529
	43%	43%	43%	44%	42%	13%
grade 1 events	546	513	616	615	554	126
	0%	0%	0%	0%	0%	0%
grade 2 events	30116	31630	28261	29712	33881	70493
	13%	14%	13%	13%	13%	24%
grade 3 events	11181	11233	11092	11311	12297	16978
	5%	5%	5%	5%	4%	5%
grade 4 events	11079	11142	11149	11441	12278	16630
	5%	5%	5%	5%	4%	5%
grade 5 events	2748	2976	2642	3157	3263	6885
	1%	1%	1%	1%	1%	2%
grade 6 events	25185	26386	23645	24104	31392	89503
	11%	11%	11%	10%	12%	30%
grade 7 events	41455	41629	42238	42830	47705	51666
	19%	18%	19%	19%	19%	17%

2.2 Compared Parameters

Parameter	Planned	Actual	Parameter	Planned	Actual
Instrument	ACIS	ACIS	Obspar format version number	6	6
Detector	ACIS-012367	ACIS-012367	Obspar file type	PREDICTED	ACTUAL
Grating	NONE	NONE	Obspar update status	NONE	UPDATED
Data mode	FAINT	FAINT	On-chip summing requested	N	N
Observation mode	SECONDARY	SECONDARY	Subarray requested	NONE	NONE
Pointing RA	0	13.01820711842725	Alternating exposures requested	N	N
Pointing Dec	0	-7.977826095820873	Primary exposure time	3.2	3.2
Pointing Roll	0.0	17.93858987587532			
SIM focus pos (mm)	-0.782348	-0.6828225247311905			
SIM defocus (mm)	0	0.8505141146731063			
SIM translation stage pos (mm)	-233.592463	250.466033080201			
SIM translation stage offset (mm)	0	-0.01005468664627074			
Observation start time	213144059.087807	213144058.06279			
Observation start date	2004-10-02T22:40:59	2004-10-02T22:40:58			
Observation end time	213163878.488694	213163877.46368			
Observation end date	2004-10-03T04:11:18	2004-10-03T04:11:17			
Read mode	TIMED	TIMED			

2.3 Aspect

2.4 Star Slots

2.5 FID Slots

A Summary

A.1 Status

V&V Scientist	Jen Lauer
V&V Date (YYYY-MM-DD)	2006.04.17
V&V Edition	1
V&V Disposition and Status	OK
V&V Charge Time	7.80118416

A.2 Comments