

# V&V Reference Report

## L2 ASCDS Version : 7.6.7.1

Observation 59994 - L2 Version 001  
Chandra X-Ray Center

L2 Processing Date : Apr 13 2006

## Contents

<b>1</b>	<b>Front</b>	<b>2</b>
<b>2</b>	<b>OBI</b>	<b>3</b>
2.1	OBI . . . . .	3
2.1.1	Images . . . . .	3
2.1.2	Bias . . . . .	3
2.1.3	Parameters . . . . .	4
2.1.4	Events . . . . .	4
2.2	Compared Parameters . . . . .	5
2.3	Aspect . . . . .	6
2.4	Star Slots . . . . .	8
2.5	FID Slots . . . . .	8
<b>A</b>	<b>Summary</b>	<b>9</b>
A.1	Status . . . . .	9
A.2	Comments . . . . .	9

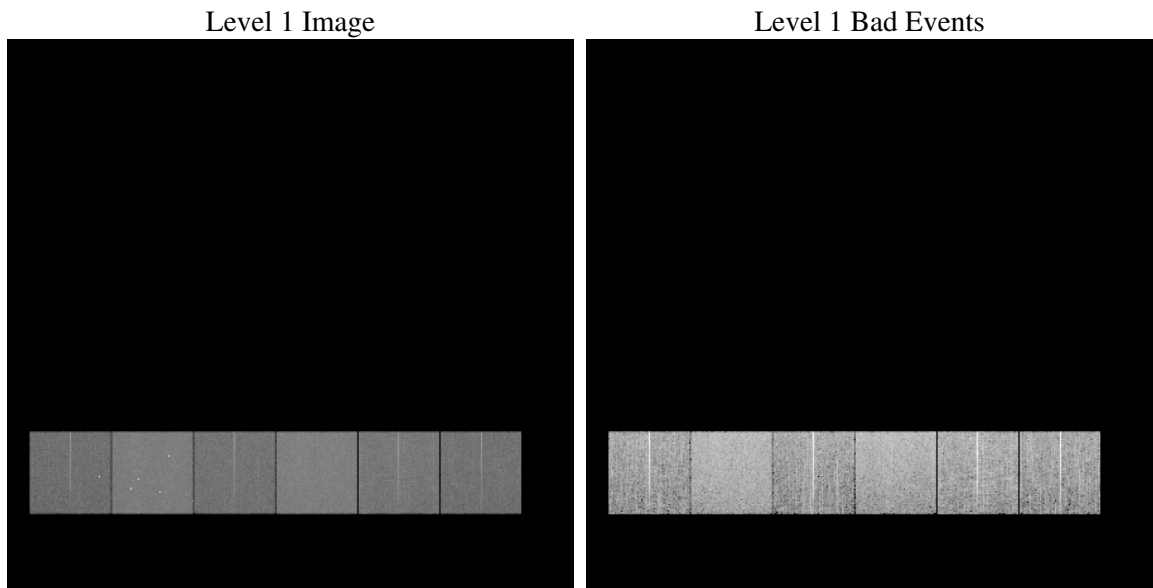
# 1 Front

seq_num	&#160
obs_id	59994
title	ACIS-456789 diagnostics
observer	CHANDRA engineering request/realtime commanding
object	&#160
dtcycle	0
cycle	P
ra_targ	0.0
dec_targ	0.0
ra_nom	25.027841669555
dec_nom	1.0067653326924
roll_nom	340.75905753932
revision	2
ontime	7796.7297628224
livetime	7698.0028759385
ontime4	5278.6108877361
ontime5	7796.7708028257
ontime6	5767.9587753713
ontime7	7796.7297628224
ontime8	6131.0307757556
ontime9	5647.9196441472
l2events	1025352

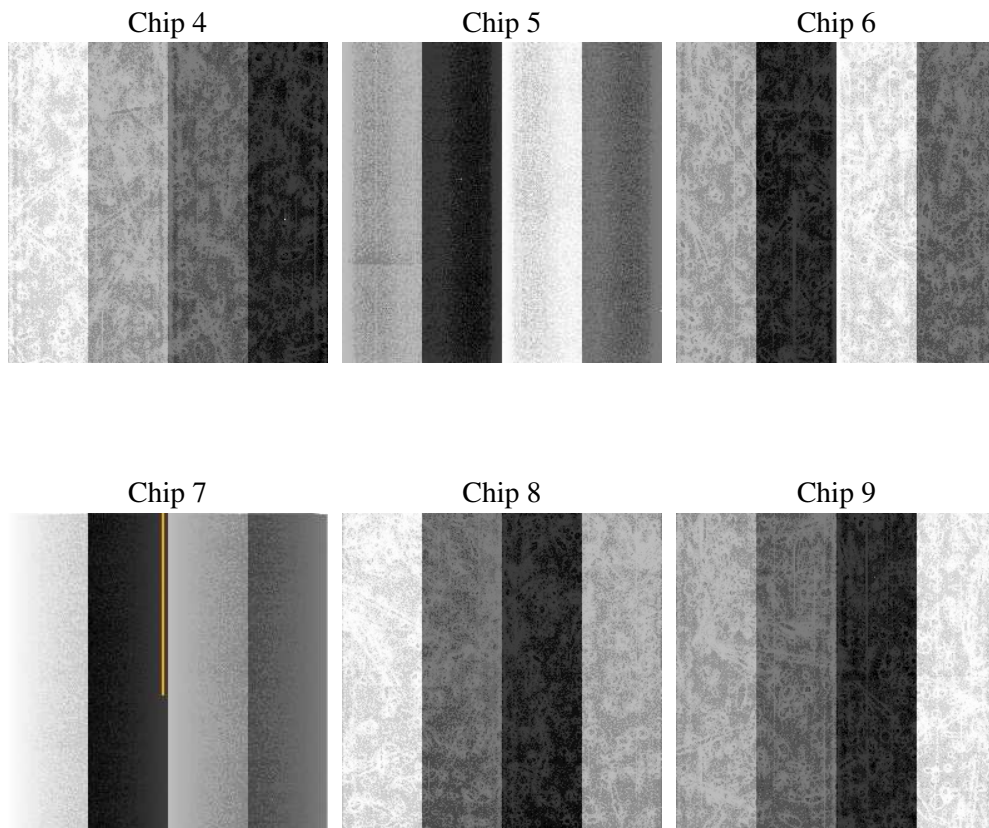
## 2 OBI

### 2.1 OBI

#### 2.1.1 Images



#### 2.1.2 Bias



### 2.1.3 Parameters

obi_num	0
ascdsver	7.6.7.1
caldsver	3.2.1
date	2006-04-13T16:18:20
revision	2

sched_exp_time	0.0
ontime	7797.865219146
ontime4	5279.6232240498
ontime5	7797.865219146
ontime6	5769.0121516883
ontime7	7797.865219146
ontime8	6132.0020720959
ontime9	5649.0961404741
l1events	1412245

### 2.1.4 Events

	ccd 4	ccd 5	ccd 6	ccd 7	ccd 8	ccd 9
level 1 events	188091	279405	212978	291352	236675	203744
rejected events	46448	63825	46791	59855	54821	47322
rejected %	24%	22%	21%	20%	23%	23%

	ccd 4	ccd 5	ccd 6	ccd 7	ccd 8	ccd 9
grade 0 events	82203	29503	90177	40605	98609	86150
	43%	10%	42%	13%	41%	42%
grade 1 events	667	231	496	105	596	553
	0%	0%	0%	0%	0%	0%
grade 2 events	22605	97512	28990	68983	32096	26641
	12%	34%	13%	23%	13%	13%
grade 3 events	9393	6838	10377	16880	12141	9976
	4%	2%	4%	5%	5%	4%
grade 4 events	9460	6832	10337	16704	11858	9984
	5%	2%	4%	5%	5%	4%
grade 5 events	2640	6492	3028	7296	3740	3140
	1%	2%	1%	2%	1%	1%
grade 6 events	17982	74895	26306	88325	27150	23671
	9%	26%	12%	30%	11%	11%
grade 7 events	43141	57102	43267	52454	50485	43629
	22%	20%	20%	18%	21%	21%

## 2.2 Compared Parameters

Parameter	Planned	Actual	Parameter	Planned	Actual
Instrument	ACIS	ACIS	Obspar format version number	6	6
Detector	ACIS-456789	ACIS-456789	Obspar file type	PREDICTED	ACTUAL
Grating	NONE	NONE	Obspar update status	NONE	UPDATED
Data mode	FAINT	FAINT	On-chip summing requested	N	N
Observation mode	SECONDARY	SECONDARY	Subarray requested	NONE	NONE
Pointing RA	0	25.02784166955482	Alternating exposures requested	N	N
Pointing Dec	0	1.006765332692379	Primary exposure time	3.2	3.2
Pointing Roll	0.0	340.7590575393188			
SIM focus pos (mm)	-0.684267	-0.6828225247311905			
SIM defocus (mm)	0	0.8505141146731063			
SIM translation stage pos (mm)	-190.132523	250.466033080201			
SIM translation stage offset (mm)	0	-0.01005468664627074			
Observation start time	214976869.869741	214976868.84475			
Observation start date	2004-10-24T03:47:50	2004-10-24T03:47:48			
Observation end time	214990469.57035	214990468.54536			
Observation end date	2004-10-24T07:34:30	2004-10-24T07:34:28			
Read mode	TIMED	TIMED			

## 2.3 Aspect



## **2.4 Star Slots**

## **2.5 FID Slots**



## A Summary

### A.1 Status

V&V Scientist	Beth Sundheim
V&V Date (YYYY-MM-DD)	2006.04.13
V&V Edition	1
V&V Disposition and Status	OK
V&V Charge Time	7.79672976

### A.2 Comments