

V&V Reference Report

L2 ASCDS Version : 7.6.7.1

Observation 59992 - L2 Version 001
Chandra X-Ray Center

L2 Processing Date : Apr 13 2006

Contents

1	Front	2
2	OBI	3
2.1	OBI	3
2.1.1	Images	3
2.1.2	Bias	3
2.1.3	Parameters	4
2.1.4	Events	4
2.2	Compared Parameters	5
2.3	Aspect	6
2.4	Star Slots	8
2.5	FID Slots	8
A	Summary	9
A.1	Status	9
A.2	Comments	9

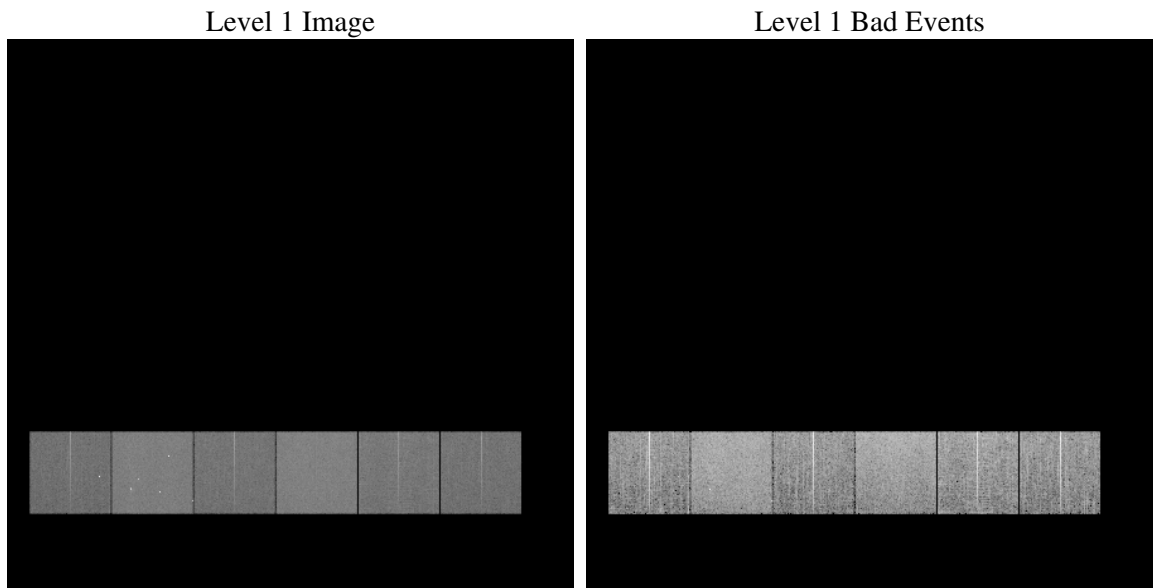
1 Front

seq_num	
obs_id	59992
title	ACIS-456789 diagnostics
observer	CHANDRA engineering request/realtime commanding
object	
dtcycle	0
cycle	P
ra_targ	0.0
dec_targ	0.0
ra_nom	21.027112965949
dec_nom	6.4896499716049
roll_nom	304.36782447012
revision	2
ontime	8278.3999691606
livetime	8173.573884097
ontime4	5653.210023582
ontime5	8278.3999691606
ontime6	6032.4051314294
ontime7	8278.3999691606
ontime8	6278.7194714844
ontime9	5909.2473451197
l2events	1092709

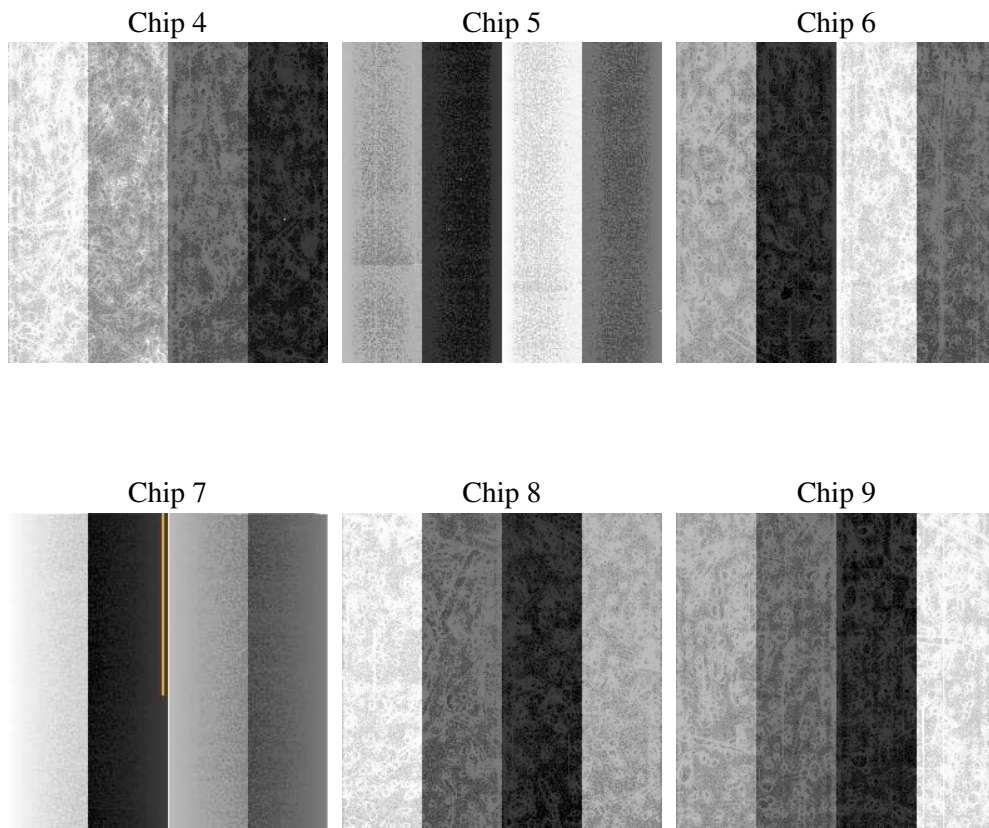
2 OBI

2.1 OBI

2.1.1 Images



2.1.2 Bias



2.1.3 Parameters

obi_num	0
ascdsver	7.6.7.1
caldbver	3.2.1
date	2006-04-13T16:31:37
revision	2

sched_exp_time	0.0
ontime	8280.7681207955
ontime4	5655.5781752169
ontime5	8280.7681207955
ontime6	6034.7732830644
ontime7	8280.7681207955
ontime8	6281.0876231194
ontime9	5911.6154967546
l1events	1497924

2.1.4 Events

	ccd 4	ccd 5	ccd 6	ccd 7	ccd 8	ccd 9
level 1 events	203516	298229	223785	311874	245206	215314
rejected events	48534	68792	47957	64615	56239	49100
rejected %	23%	23%	21%	20%	22%	22%

	ccd 4	ccd 5	ccd 6	ccd 7	ccd 8	ccd 9
grade 0 events	90072	27837	95102	41964	101621	91129
	44%	9%	42%	13%	41%	42%
grade 1 events	745	181	516	131	617	639
	0%	0%	0%	0%	0%	0%
grade 2 events	24371	105506	30123	74828	33046	28598
	11%	35%	13%	23%	13%	13%
grade 3 events	10365	6926	10938	17458	12355	10685
	5%	2%	4%	5%	5%	4%
grade 4 events	10281	6819	10935	17267	12515	10542
	5%	2%	4%	5%	5%	4%
grade 5 events	2780	6636	3073	7528	3961	3283
	1%	2%	1%	2%	1%	1%
grade 6 events	19893	82349	28730	95742	29430	25260
	9%	27%	12%	30%	12%	11%
grade 7 events	45009	61975	44368	56956	51661	45178
	22%	20%	19%	18%	21%	20%

2.2 Compared Parameters

Parameter	Planned	Actual	Parameter	Planned	Actual
Instrument	ACIS	ACIS	Obspar format version number	6	6
Detector	ACIS-456789	ACIS-456789	Obspar file type	PREDICTED	ACTUAL
Grating	NONE	NONE	Obspar update status	NONE	UPDATED
Data mode	FAINT	FAINT	On-chip summing requested	N	N
Observation mode	SECONDARY	SECONDARY	Subarray requested	NONE	NONE
Pointing RA	0	21.02711296594944	Alternating exposures requested	N	N
Pointing Dec	0	6.489649971604855	Primary exposure time	3.2	3.2
Pointing Roll	0.0	304.3678244701211			
SIM focus pos (mm)	-0.684267	-0.6828225247311905			
SIM defocus (mm)	0	0.8505141146731063			
SIM translation stage pos (mm)	-190.132523	250.466033080201			
SIM translation stage offset (mm)	0	-0.01005468664627074			
Observation start time	215012597.27134	215012596.24635			
Observation start date	2004-10-24T13:43:17	2004-10-24T13:43:16			
Observation end time	215036262.472399	215036261.44741			
Observation end date	2004-10-24T20:17:42	2004-10-24T20:17:41			
Read mode	TIMED	TIMED			

2.3 Aspect

2.4 Star Slots

2.5 FID Slots

A Summary

A.1 Status

V&V Scientist	Jen Lauer
V&V Date (YYYY-MM-DD)	2006.04.13
V&V Edition	1
V&V Disposition and Status	OK
V&V Charge Time	8.27839996

A.2 Comments