

V&V Reference Report

L2 ASCDS Version : 7.6.7.1

Observation 59977 - L2 Version 001
Chandra X-Ray Center

L2 Processing Date : Apr 12 2006

Contents

1	Front	2
2	OBI	3
2.1	OBI	3
2.1.1	Images	3
2.1.2	Bias	3
2.1.3	Parameters	4
2.1.4	Events	4
2.2	Compared Parameters	5
2.3	Aspect	6
2.4	Star Slots	8
2.5	FID Slots	8
A	Summary	9
A.1	Status	9
A.2	Comments	9

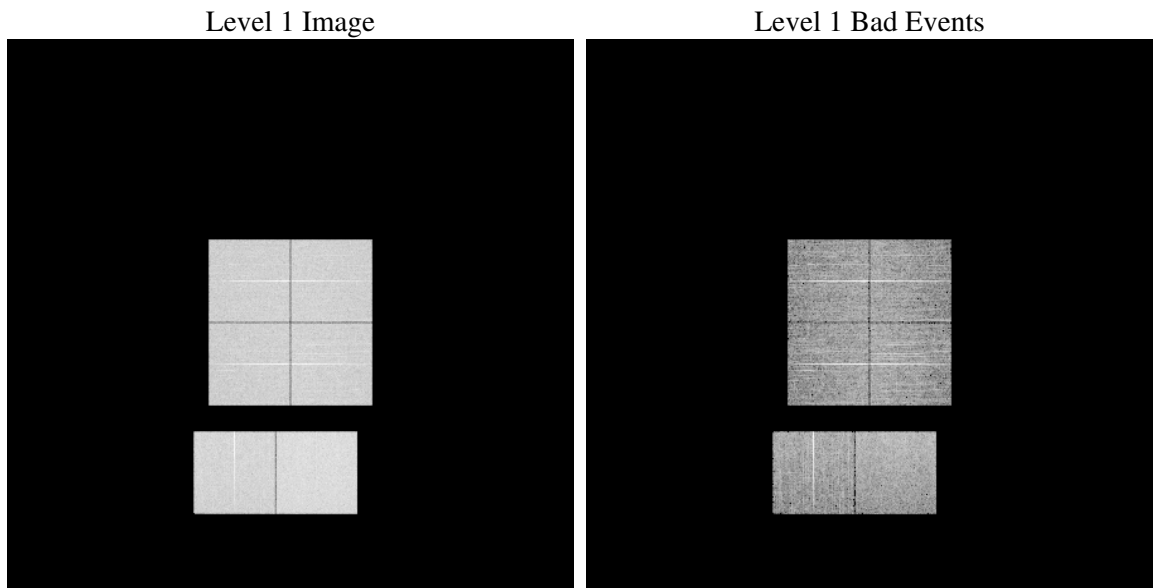
1 Front

seq_num	
obs_id	59977
title	ACIS-012367 diagnostics
observer	CHANDRA engineering request/realtime commanding
object	
dtcycle	0
cycle	P
ra_targ	0.0
dec_targ	0.0
ra_nom	35.021597174613
dec_nom	20.974789813941
roll_nom	233.80141750073
revision	2
ontime	7798.3999709487
livetime	7699.6519348838
ontime0	6336.7221097648
ontime1	6453.3970396817
ontime2	6116.3357011676
ontime3	6262.1792849898
ontime6	6774.2531886995
ontime7	7798.3999709487
l2events	1054799

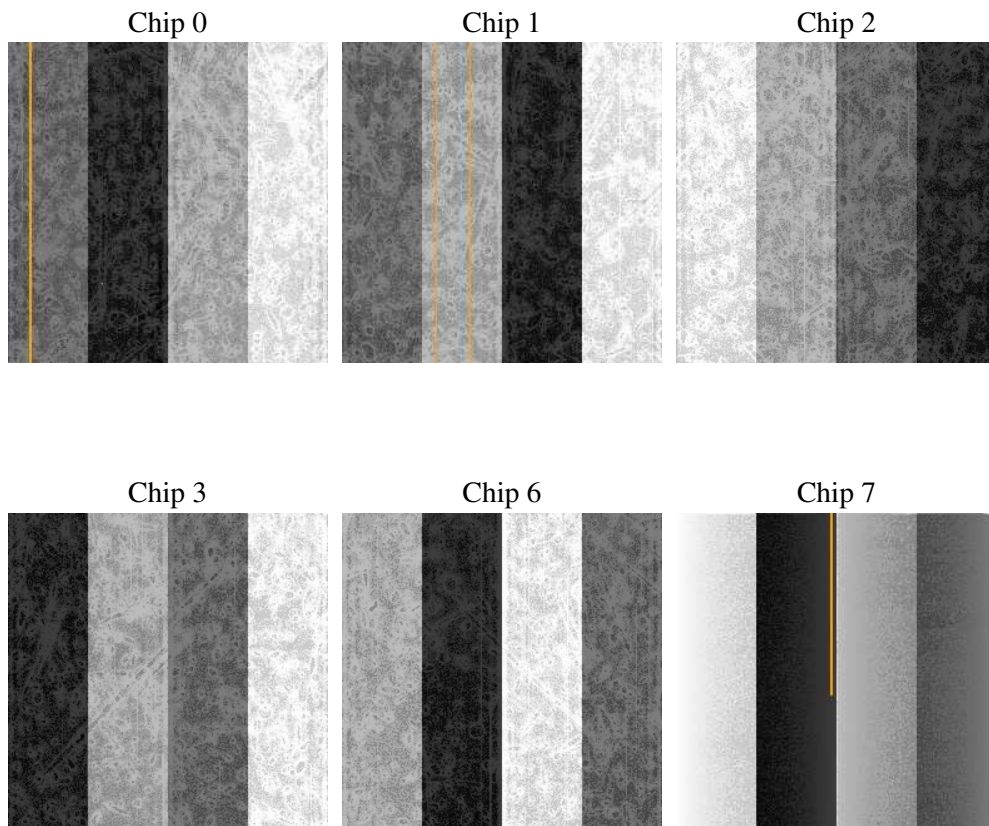
2 OBI

2.1 OBI

2.1.1 Images



2.1.2 Bias



2.1.3 Parameters

obi_num	0
ascdsver	7.6.7.1
caldbver	3.2.1
date	2006-04-12T08:29:53
revision	2

sched_exp_time	0.0
ontime	7801.0977796018
ontime0	6339.4199184179
ontime1	6456.0948483348
ontime2	6119.0335098207
ontime3	6264.877093643
ontime6	6776.9509973526
ontime7	7801.0977796018
l1events	1411977

2.1.4 Events

	ccd 0	ccd 1	ccd 2	ccd 3	ccd 6	ccd 7
level 1 events	218370	222220	214695	224931	244896	286865
rejected events	46341	47142	47351	52346	51916	59130
rejected %	21%	21%	22%	23%	21%	20%

	ccd 0	ccd 1	ccd 2	ccd 3	ccd 6	ccd 7
grade 0 events	94374	95570	94188	96956	105097	39148
	43%	43%	43%	43%	42%	13%
grade 1 events	584	520	599	623	534	118
	0%	0%	0%	0%	0%	0%
grade 2 events	30055	31290	28357	29618	33254	68518
	13%	14%	13%	13%	13%	23%
grade 3 events	11235	11201	10882	11171	12015	16535
	5%	5%	5%	4%	4%	5%
grade 4 events	11275	11149	10874	11305	11963	15986
	5%	5%	5%	5%	4%	5%
grade 5 events	2914	2947	2721	3084	3345	7153
	1%	1%	1%	1%	1%	2%
grade 6 events	25168	25943	23129	23629	30747	87647
	11%	11%	10%	10%	12%	30%
grade 7 events	42765	43600	43945	48545	47941	51760
	19%	19%	20%	21%	19%	18%

2.2 Compared Parameters

Parameter	Planned	Actual	Parameter	Planned	Actual
Instrument	ACIS	ACIS	Obspar format version number	6	6
Detector	ACIS-012367	ACIS-012367	Obspar file type	PREDICTED	ACTUAL
Grating	NONE	NONE	Obspar update status	NONE	UPDATED
Data mode	FAINT	FAINT	On-chip summing requested	N	N
Observation mode	SECONDARY	SECONDARY	Subarray requested	NONE	NONE
Pointing RA	0	35.0215971746128	Alternating exposures requested	N	N
Pointing Dec	0	20.97478981394086	Primary exposure time	3.2	3.2
Pointing Roll	0.0	233.8014175007344			
SIM focus pos (mm)	-0.782348	-0.6828225247311905			
SIM defocus (mm)	0	0.8505141146731063			
SIM translation stage pos (mm)	-233.592463	250.466033080201			
SIM translation stage offset (mm)	0	-0.01005468664627074			
Observation start time	216119373.87097	216119372.84596			
Observation start date	2004-11-06T09:09:34	2004-11-06T09:09:32			
Observation end time	216133084.271585	216133083.24658			
Observation end date	2004-11-06T12:58:04	2004-11-06T12:58:03			
Read mode	TIMED	TIMED			

2.3 Aspect

2.4 Star Slots

2.5 FID Slots

A Summary

A.1 Status

V&V Scientist	Jen Lauer
V&V Date (YYYY-MM-DD)	2006.04.12
V&V Edition	1
V&V Disposition and Status	OK
V&V Charge Time	7.79839997

A.2 Comments