

# V&V Reference Report

## L2 ASCDS Version : 7.6.7.1

Observation 59964 - L2 Version 001  
Chandra X-Ray Center

L2 Processing Date : Apr 12 2006

## Contents

<b>1</b>	<b>Front</b>	<b>2</b>
<b>2</b>	<b>OBI</b>	<b>3</b>
2.1	OBI . . . . .	3
2.1.1	Images . . . . .	3
2.1.2	Bias . . . . .	3
2.1.3	Parameters . . . . .	4
2.1.4	Events . . . . .	4
2.2	Compared Parameters . . . . .	5
2.3	Aspect . . . . .	6
2.4	Star Slots . . . . .	8
2.5	FID Slots . . . . .	8
<b>A</b>	<b>Summary</b>	<b>9</b>
A.1	Status . . . . .	9
A.2	Comments . . . . .	9

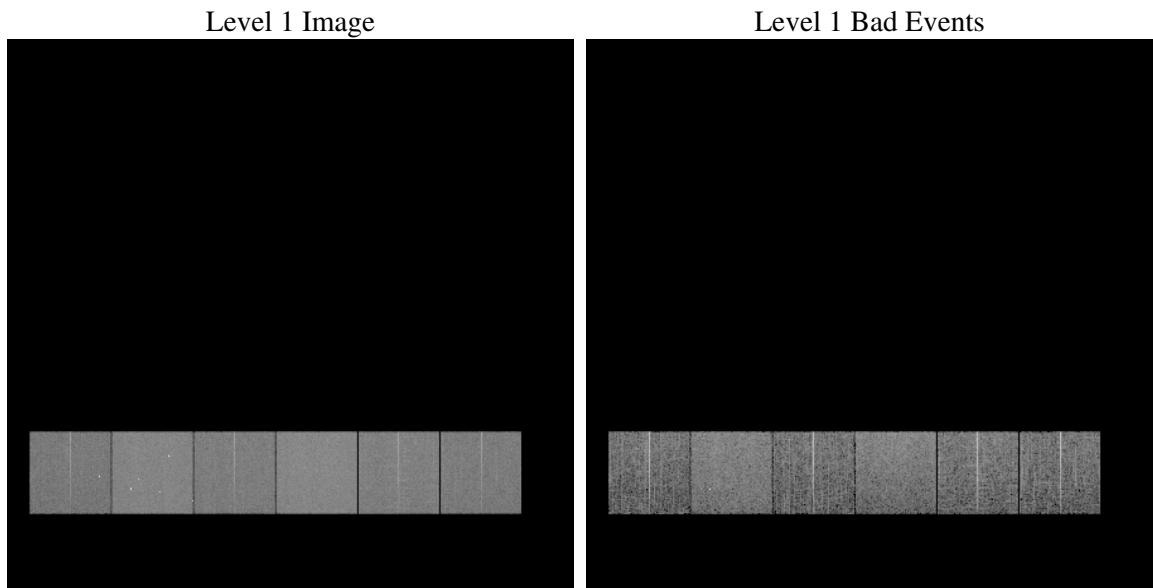
# 1 Front

seq_num	&#160
obs_id	59964
title	ACIS-456789 diagnostics
observer	CHANDRA engineering request/realtime commanding
object	&#160
dtcycle	0
cycle	P
ra_targ	0.0
dec_targ	0.0
ra_nom	53.02483841081
dec_nom	16.015631200831
roll_nom	0.51589341547088
revision	2
ontime	6774.3999747634
livetime	6688.618443229
ontime4	4985.3834765553
ontime5	6774.3999747634
ontime6	5341.8902784586
ontime7	6774.3999747634
ontime8	5568.7584581077
ontime9	5257.6251696944
l2events	905723

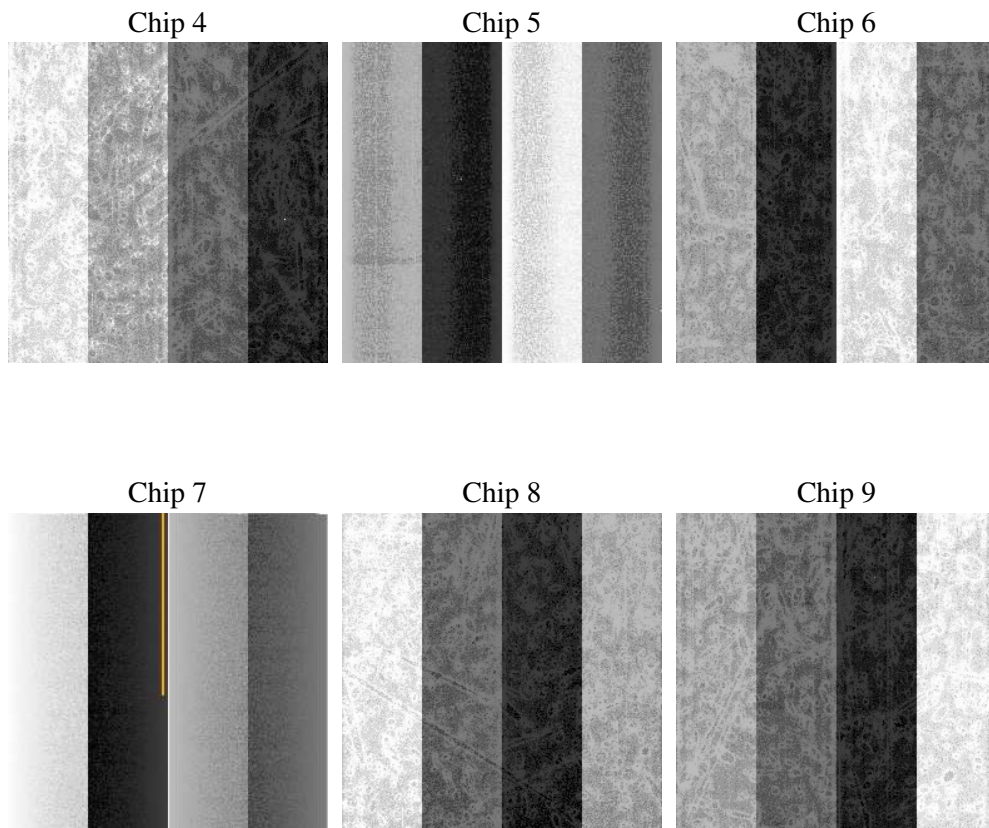
## 2 OBI

### 2.1 OBI

#### 2.1.1 Images



#### 2.1.2 Bias



### 2.1.3 Parameters

obi_num	2
ascdsver	7.6.7.1
caldsver	3.2.1
date	2006-04-12T09:42:34
revision	2

sched_exp_time	0.0
ontime	6835.2783665359
ontime4	5033.2979373634
ontime5	6835.2783665359
ontime6	5383.3228185475
ontime7	6835.2783665359
ontime8	5613.4320083559
ontime9	5308.7806506455
l1events	1239710

### 2.1.4 Events

	ccd 4	ccd 5	ccd 6	ccd 7	ccd 8	ccd 9
level 1 events	172041	235012	193507	246097	207911	185142
rejected events	40862	55207	41539	51054	45821	42098
rejected %	23%	23%	21%	20%	22%	22%

	ccd 4	ccd 5	ccd 6	ccd 7	ccd 8	ccd 9
grade 0 events	76840	21389	83152	33460	88342	79255
	44%	9%	42%	13%	42%	42%
grade 1 events	585	81	434	80	482	462
	0%	0%	0%	0%	0%	0%
grade 2 events	21148	84383	26539	59655	28787	24813
	12%	35%	13%	24%	13%	13%
grade 3 events	8794	5558	9488	13758	10617	9341
	5%	2%	4%	5%	5%	5%
grade 4 events	8964	5596	9629	13744	10763	9403
	5%	2%	4%	5%	5%	5%
grade 5 events	2265	5371	2551	5930	3115	2780
	1%	2%	1%	2%	1%	1%
grade 6 events	16700	64481	24309	76133	24777	21555
	9%	27%	12%	30%	11%	11%
grade 7 events	36745	48153	37405	43337	41028	37533
	21%	20%	19%	17%	19%	20%

## 2.2 Compared Parameters

Parameter	Planned	Actual	Parameter	Planned	Actual
Instrument	ACIS	ACIS	Obspar format version number	6	6
Detector	ACIS-456789	ACIS-456789	Obspar file type	PREDICTED	ACTUAL
Grating	NONE	NONE	Obspar update status	NONE	UPDATED
Data mode	FAINT	FAINT	On-chip summing requested	N	N
Observation mode	SECONDARY	SECONDARY	Subarray requested	NONE	NONE
Pointing RA	0	53.02483841081013	Alternating exposures requested	N	N
Pointing Dec	0	16.01563120083099	Primary exposure time	3.2	3.2
Pointing Roll	0.0	0.5158934154708799			
SIM focus pos (mm)	-0.684267	-0.7809083437167272			
SIM defocus (mm)	0	0.7524282956875696			
SIM translation stage pos (mm)	-190.132523	250.466033080201			
SIM translation stage offset (mm)	0	-0.01005468664627074			
Observation start time	217067302.113478	217067301.08847			
Observation start date	2004-11-17T08:28:22	2004-11-17T08:28:21			
Observation end time	217089241.214463	217089240.18946			
Observation end date	2004-11-17T14:34:01	2004-11-17T14:34:00			
Read mode	TIMED	TIMED			

## 2.3 Aspect



## **2.4 Star Slots**

## **2.5 FID Slots**



## A Summary

### A.1 Status

V&V Scientist	Jen Lauer
V&V Date (YYYY-MM-DD)	2006.04.12
V&V Edition	1
V&V Disposition and Status	OK
V&V Charge Time	6.77439997

### A.2 Comments