

V&V Reference Report

L2 ASCDS Version : 7.6.7.1

Observation 59951 - L2 Version 002
Chandra X-Ray Center

L2 Processing Date : Apr 10 2006

Contents

1	Front	2
2	OBI	3
2.1	OBI	3
2.1.1	Images	3
2.1.2	Bias	3
2.1.3	Parameters	4
2.1.4	Events	4
2.2	Compared Parameters	5
2.3	Aspect	6
2.4	Star Slots	8
2.5	FID Slots	8
A	Summary	9
A.1	Status	9
A.2	Comments	9

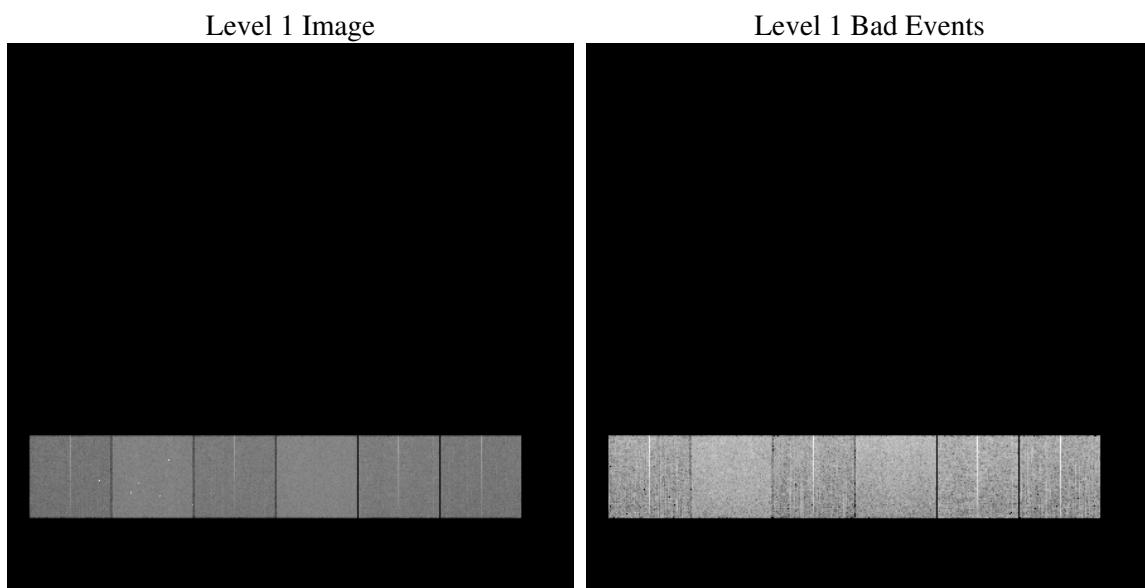
1 Front

seq_num	
obs_id	59951
title	ACIS-456789 diagnostics
observer	CHANDRA engineering request/realtime commanding
object	
dtcycle	0
cycle	P
ra_targ	0.0
dec_targ	0.0
ra_nom	68.37112623097
dec_nom	46.987480324076
roll_nom	169.83046936775
revision	2
ontime	7797.9825298786
livetime	7699.2397797039
ontime4	5448.4025152028
ontime5	7798.0235698819
ontime6	6164.616315484
ontime7	7797.9825298786
ontime8	6274.8912553489
ontime9	5830.6734959483
l2events	1029139

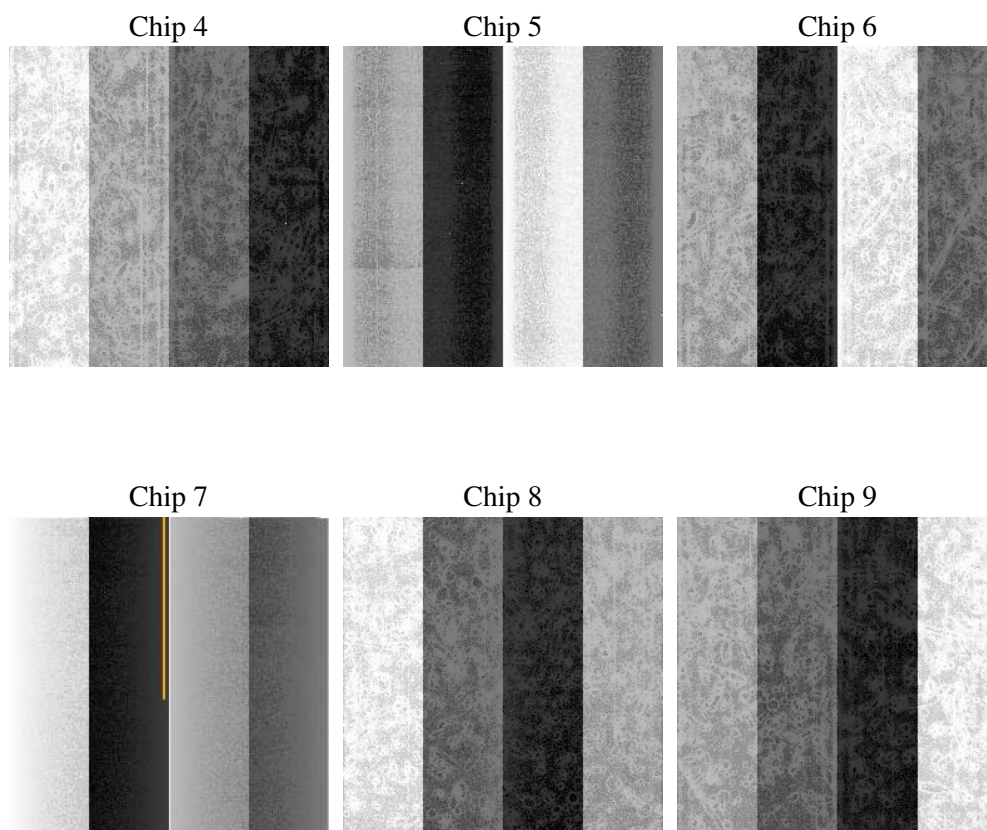
2 OBI

2.1 OBI

2.1.1 Images



2.1.2 Bias



2.1.3 Parameters

obi_num	0
ascdsver	7.6.7.1
caldbver	3.2.1
date	2006-04-11T02:00:00
revision	2

sched_exp_time	0.0
ontime	7801.0929805338
ontime4	5451.3898458481
ontime5	7801.0929805338
ontime6	6167.6446861327
ontime7	7801.0929805338
ontime8	6277.8375460207
ontime9	5833.8249866068
l1events	1411503

2.1.4 Events

	ccd 4	ccd 5	ccd 6	ccd 7	ccd 8	ccd 9
level 1 events	190329	270630	221262	285979	236291	207012
rejected events	47491	62599	47266	58541	53860	48449
rejected %	24%	23%	21%	20%	22%	23%

	ccd 4	ccd 5	ccd 6	ccd 7	ccd 8	ccd 9
grade 0 events	82877	25196	94698	39556	98790	87350
	43%	9%	42%	13%	41%	42%
grade 1 events	736	106	529	109	565	543
	0%	0%	0%	0%	0%	0%
grade 2 events	22824	95964	29995	68121	32060	27130
	11%	35%	13%	23%	13%	13%
grade 3 events	9485	6595	11038	16573	11922	10228
	4%	2%	4%	5%	5%	4%
grade 4 events	9584	6375	10855	16176	12035	10111
	5%	2%	4%	5%	5%	4%
grade 5 events	2660	6088	3118	7045	3687	3111
	1%	2%	1%	2%	1%	1%
grade 6 events	18152	73977	27490	87106	27703	23837
	9%	27%	12%	30%	11%	11%
grade 7 events	44011	56329	43539	51293	49529	44702
	23%	20%	19%	17%	20%	21%

2.2 Compared Parameters

Parameter	Planned	Actual	Parameter	Planned	Actual
Instrument	ACIS	ACIS	Obspar format version number	6	6
Detector	ACIS-456789	ACIS-456789	Obspar file type	PREDICTED	ACTUAL
Grating	NONE	NONE	Obspar update status	NONE	UPDATED
Data mode	FAINT	FAINT	On-chip summing requested	N	N
Observation mode	SECONDARY	SECONDARY	Subarray requested	NONE	NONE
Pointing RA	0	68.37112623096959	Alternating exposures requested	N	N
Pointing Dec	0	46.98748032407576	Primary exposure time	3.2	3.2
Pointing Roll	0.0	169.8304693677509			
SIM focus pos (mm)	-0.684267	-0.6828225247311905			
SIM defocus (mm)	0	0.8505141146731063			
SIM translation stage pos (mm)	-190.132523	250.466033080201			
SIM translation stage offset (mm)	0	-0.01005468664627074			
Observation start time	217943570.552806	217943569.52782			
Observation start date	2004-11-27T11:52:51	2004-11-27T11:52:49			
Observation end time	217961909.853629	217961908.82864			
Observation end date	2004-11-27T16:58:30	2004-11-27T16:58:28			
Read mode	TIMED	TIMED			

2.3 Aspect

2.4 Star Slots

2.5 FID Slots

A Summary

A.1 Status

V&V Scientist	Jen Lauer
V&V Date (YYYY-MM-DD)	2006.04.11
V&V Edition	1
V&V Disposition and Status	OK
V&V Charge Time	7.79798252

A.2 Comments